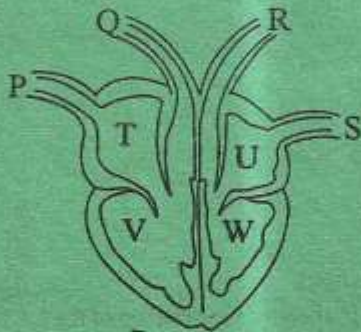


1. Which of the following deficiency diseases would lead to prevention of the other if well controlled?
- A. Kwashiorkor B. Marasmus
C. Rickets D. Anaemia

2. Use the diagram below to answer the questions that follow.

Which part pumps scarlet red blood to the head?



- A. T B. R
C. W D. P

3. In the system illustrated above when blood enters through P chamber
- A. T contracts B. V relaxes
C. W contracts D. U contracts
4. When the diaphragm flattens
- A. pressure of the chest decreases
B. lungs shrink
C. ribs move downwards and inwards
D. volume of the chest decreases

5. Which physical property of soil is not determined by size of the soil particles?

- A. Drainage B. Colour
C. Retention D. Texture

6. Plants that grow in decaying matter include all the following *except*

- A. mould B. mushroom
C. bracket tree D. moss

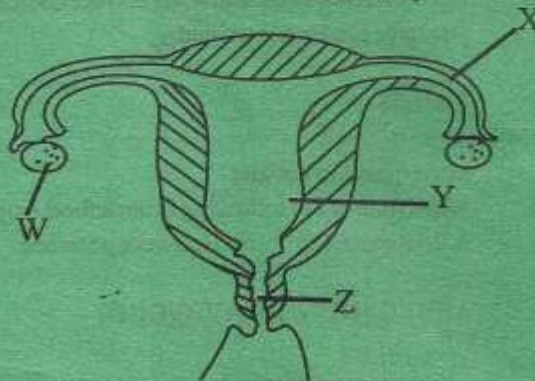
7. Which of the following is a nitrogenous waste?

- A. Urea
B. Carbon -dioxide
C. Excess salt
D. Excess water

8. Plants that grow in dry areas include all the following *except*

- A. casuarina B. acacia
C. duck weeds D. murrum grass

9. Study the diagram below and answer the question that follows;



Which part functions the same way as a stigma in a flower?

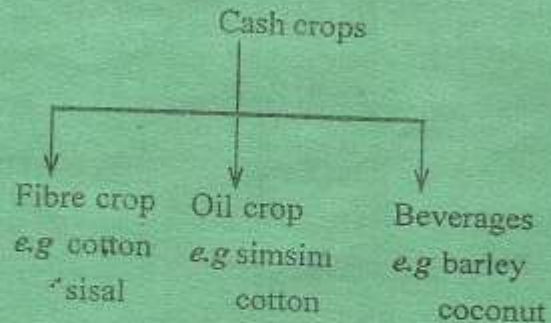
- A. W B. X
C. Z D. Y
10. When the surrounding cools down matter can undergo all the following *except*
A. contraction B. condensation
C. melting D. freezing
11. The fourth largest planet is
A. Earth B. Neptune
C. Uranus D. Saturn
12. Livestock can get body building nutrients from all the following except
A. lucerne B. nandi setaria
C. desmodium D. bran
13. Floods pollute water as well as soil. This is because when soils are flooded they lack
A. humus
B. living organisms
C. mineral particles
D. air
14. When investigating capillarity all the following must be the same a part from
A. amount of water
B. size of cotton wool
C. time allocated
D. size of straws
15. A single fixed pulley makes work easier by
A. increasing effort distance
B. changing direction of force
C. increasing the effort applied
D. reducing the load distance
16. A flower with long feathery stigma is also likely to
A. produce heavy pollen grains
B. have brightly coloured petals
C. produce no nectar
D. have sticky pollen grains
17. Which of the following changes occur to both boys and girls during adolescence?
A. Hips broadening
B. Become muscular
C. Growth of hair on the face
D. Produce mature sex cells
18. Which of the following can manage both industrial and domestic waste?
A. Re-using
B. Substitution of raw materials
C. Change of production process
D. Recycling
19. A see-saw works the same way as a
A. weighing scale
B. beam balance
C. a winch
D. wheel and axle

20. Which weed looks like the one shown below?

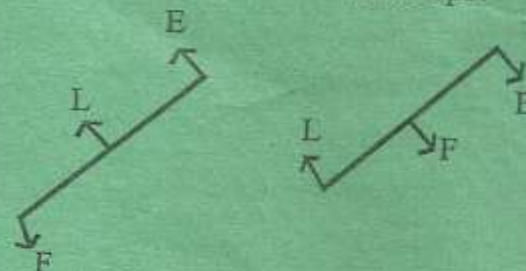


- A. Pig weed
 B. Black jack
 C. Oxalis
 D. Sodom apple
21. Both fleas and liverflukes can be controlled by
- A. spraying
 B. dipping
 C. drenching
 D. rotational grazing
22. Which of the following is an effect as well as a sign of ill health in livestock?
- A. Irritation
 B. Loss of weight
 C. Coughing
 D. Lower yields
23. Weevils can attack all the following crops except
- A. grains B. sun flower
 C. sisal D. cashew nuts

24. Below is a classification of crops. Which crop is wrongly grouped?



- A. Cotton
 B. Coconut
 C. Barley
 D. Sisal
25. The diagrams below show some arrangements in levers. Which lever can have the two set-ups?



- A. Spade
 B. Wheelbarrow
 C. Crowbar
 D. Claw hammer
26. Which of the following fertilizers is a potassium fertilizer?
- A. DAP B. DSP
 C. MP D. CAN

27. Study the energy transformation below

Chemical → Electrical → Magnetic
→ X → sound

What does X represent?

- A. Mechanical
- B. Light
- C. Heat
- D. Kinetic

28. Which of the following conductors of electricity does not match with the others?

- A. Copper
- B. Water
- C. Pencil
- D. Carbon rod

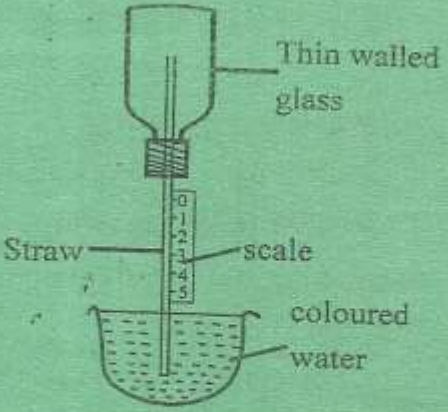
29. Digestion of fat occurs in

- A. duodenum
- B. ileum
- C. stomach
- D. mouth

30. Which of the following foods contains both proteins and energy food?

- A. Ground nuts
- B. Carrots
- C. Cereals
- D. Fats and oils

31. Study the diagram below



For better result the instrument should have

- A. a plastic bottle
- B. clear water
- C. upward scaling
- D. long narrow straw

32. Which of the following is not an advantage of manure over fertilizers?

- A. Improve soil structure
- B. Are specific
- C. They are cheap
- D. Do not pollute soil

33. Which of the following materials is not magnetic?

- A. Steel
- B. Zinc
- C. Cobalt
- D. Tin

34. Three of the following methods preserve food by removing moisture except one. Which one is it?

- A. Salting B. Drying
C. Canning D. Smoking

35. Three of the following factors increase the rate of soil erosion. Which one does not?

- A. Overstocking
B. Road construction
C. Type of soil
D. Vegetation cover

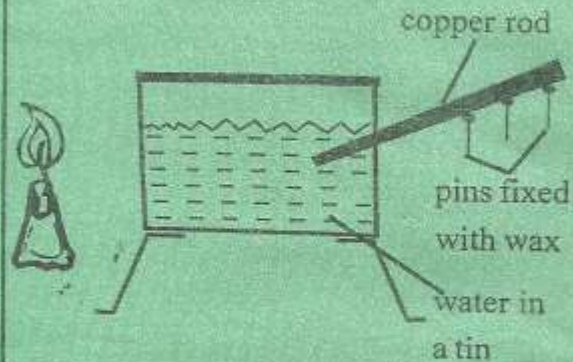
36. In a food chain the most abundant organisms are

- A. producers
B. decomposers
C. primary consumers
D. scavengers

37. A child was getting tired after simple exercises, experiencing dizziness and having pale skin and finger nails. This came after the child had recovered from another illness. Which illness was the child likely to have suffered from before?

- A. Malaria B. Anaemia
C. Rickets D. TB

38. In the set-up below which energy transfer modes would have led to the melting of wax?



- A. Conduction → convection → convection
B. Convection → convection → conduction
C. Radiation → radiation → convection
D. Radiation → convection → conduction

39. Having fibre food content in our diet helps in

- A. digestion B. constipation
C. peristalsis D. egestion

40. Which one of the following is not true about pre molars ?

- A. They are four in each jaw
B. They are used in chewing and grinding
C. They have even tops
D. They are part of milk teeth

41. Which of the following plants store food in leaves?
- Cactus
 - Irish potato
 - Onions
 - Yams
42. The temperature that allows a material to condense will also make it
- evaporate
 - melt
 - freeze
 - contract
43. Plants with broad leaves, numerous stomata and shallow root system are also likely to have
- flexible stems
 - deep roots
 - succulent stems
 - thick cuticles
44. The last stage in birth process is
- birth of baby
 - cutting umbilical cord
 - release of after birth
 - bursting of amnion
45. Clouds that cover the whole sky will also
- look like cotton wool
 - be dark grey in colour
 - appear high in the sky
 - indicate fair weather
46. Commercial animal feeds are not likely to have
- proteins
 - vitamins
 - water
 - mineral salts
47. At what age is a child immunized against polio for 3rd dose?
- 10 weeks
 - At birth
 - 14 weeks
 - 9 months
48. A weakened disease germs given to people for inoculation is referred to as a
- antibiotics
 - vaccine
 - antibodies
 - medicine
49. Which of the following is not a use of water in industries?
- Making fountains
 - Making chemicals
 - Cooling machines
 - Mixing chemicals
50. In which part of digestive system is food made into chyme?
- Mouth
 - Stomach
 - Colon
 - Small intestine