
HOME SCIENCE PAPER 2

KCSE 2011

Coordinated by KENPRO, Macjo Arcade, 4th Floor, Suite 15E, Off Magadi Road, Ongata Rongai
|Tel: +254202319748 | E-mail: infosnkenya@gmail.com | Website: www.schoolsnetkenya.com/

4.1.2 Home Science Paper 2 (441/2)

A pattern of a child's dress is provided. You are advised to study the sketches, instruction and the layout carefully before you begin the test.

Materials provided.

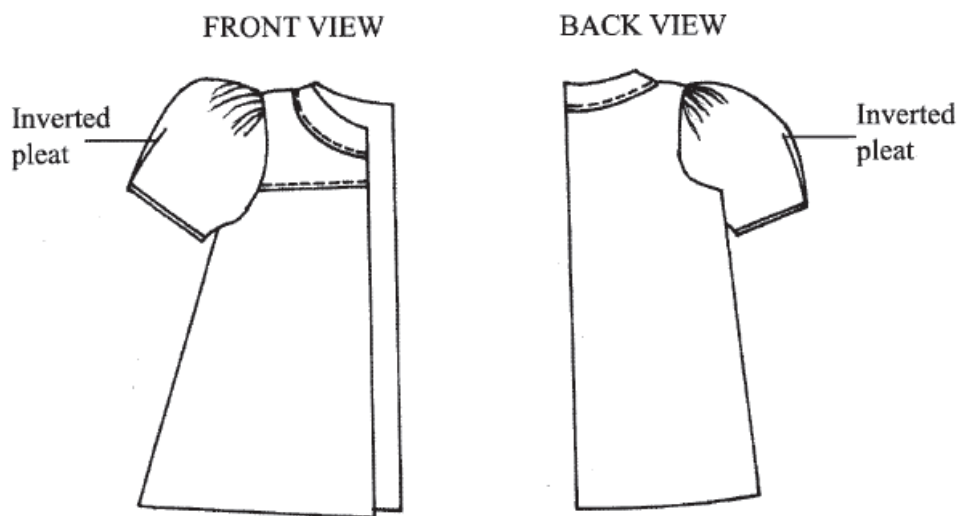
- 1 Pattern pieces
 - A. Dress Back
 - B. Dress Front
 - C. Front Yoke
 - D. Sleeve
 - E. Sleeve binding
 - F. Back Facing
 - G. Front Facing
- 2 Plain lightweight cotton fabric 65 cm long by 90 cm wide.
- 3 Sewing thread to match the fabric.
- 4 One large envelope.

THE TEST

Using the material provided, cut out and make the **RIGHT HALF** of a child's dress to show the following processes:

- (a) attaching the front yoke to the dress front using an overlaid seam. Neaten **half** of the seam using overcasting stitches;
- (b) joining of the shoulder seam using an open seam (**do not neaten**);
- (c) joining of the side seam using an open seam;
- (d) preparing of the sleeve;
 - (i) making an inverted pleat;
 - (ii) joining the underarm seam using an open seam (**do not neaten**);
 - (iii) attaching the binding and holding it using slip hemming (slip hem **half** the binding);
- (e) attaching of sleeve onto the garment (**do not trim or neaten**);
- (f) attaching the facing on the neckline.

At the end of the examination, firmly sew on your work, on a single fabric, a label bearing your name and index number. Remove needles, and pins from your work then fold your work neatly and place it in the envelope provided. Do not put scraps of fabric in the envelope.



THE LAYOUT (NOT DRAWN TO SCALE)

