

FORM FOUR CLUSTER KCSE MODEL13

AGRICULTURE PAPER 1 QUESTIONS

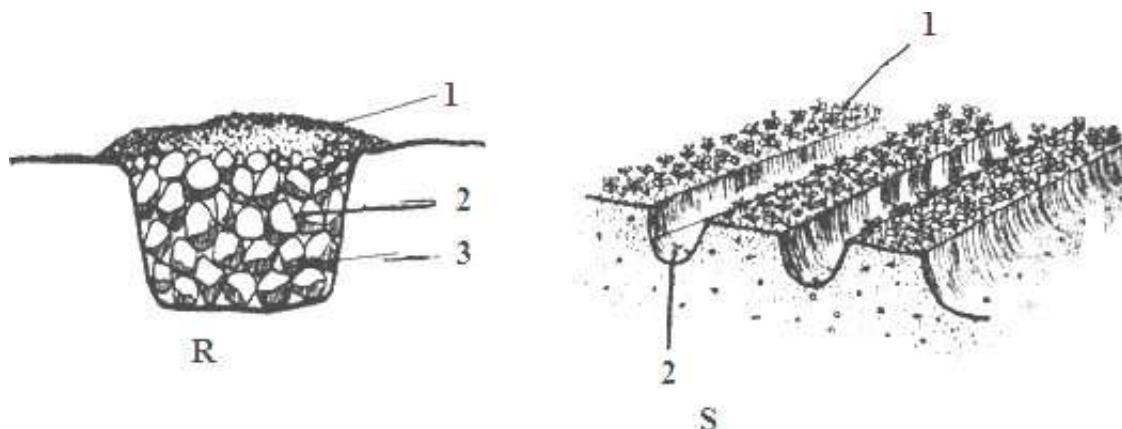
SECTION A (30 Marks)

1. Name TWO types of metal pipes.
2. State THREE methods of treating water.
3. (a) Name THREE methods of farming. (1½ marks)
(b) State THREE disadvantages of intensive farming. (1½ marks)
4. (a) State THREE effects of low temperature on crop farming. (1½ marks)
(b) Apart from temperature, name TWO other environmental factors that affect farming in Kenya. (1 mark)
5. (a) What is pruning? (1 mark)
(b) State THREE reasons why pruning is considered an important practice in crop farming. (1½ marks)
6. (a) State THREE qualities of a good grain store that will facilitate safe storage of the produce. (1½ marks)
(b) State THREE factors that determine the stage at which a crop can be harvested. (1½ marks)
7. State atleast ONE reason why the following records are kept on the farm.
(a) Labour records. (1 mark)
(b) Milk marketing records. (1 mark)
8. State THREE harmful effects of pests on maize in the field.
9. (a) State FOUR objectives of the million acre scheme. (2 marks)
(b) Give THREE examples of settlements under the million acre scheme. (1½ marks)
10. (a) Distinguish between intensity of defoliation and frequency of defoliation in pasture utilization. (1 mark)
(b) State THREE effects of very early defoliation of pasture. (1½ marks)
11. (a) Distinguish between soil structure and soil texture. (1 marks)
(b) State FOUR practices that you would advise farmers to carry out to improve soil structure. (2 marks)
12. State TWO physical agents of weathering.
13. State THREE factors likely to determine the number of times secondary cultivation can be done on a field of land.
14. State THREE methods of applying fertiliser in a field of crops.

SECTION B (20 Marks)

15. State the deficient nutrients element in plants showing the following symptoms.
(a) Purpling of leaves, stunted growth, slended stalks and lateral buds remain dormant. (½ mark)
(b) Stunted growth, dying back of plant tips and blossom endrot in tomatoes. (½ mark)
(c) Yellowing of leaves appears first on the lower leaves, leaves turn brown and fall prematurely and stunted growth. (½ mark)
(d) Leaf curling, yellowing of leaves, tips and edges are scorched and have small mottles. (½mk)

16. The diagrams labeled R and S below illustrate some methods of water draining in the fields. Study them carefully and answer the questions that follow.



- (a) Identify the methods of drainage labeled R and S. (2 marks)

R.....
S.....

- (b) Name the parts labeled 1, 2 and 3 on the tool R. (3 marks)

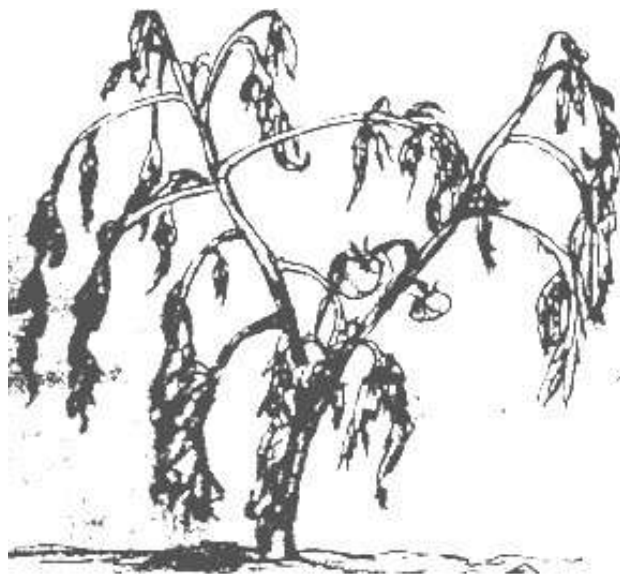
1.....
2.....
3.....

- (c) Identify the parts labeled 1 and 2 on tool S. (2 marks)

1.....
2.....

- (d) State TWO reasons for carrying out drainage. (2 marks)

17. The diagrams labeled M and N below illustrate some field diseases. Carefully study them and answer the questions that follow.



M



N

(a) Identify the diseases illustrated in diagrams M and N. (2 marks)

M.....
N.....

(b) Name the causative agents of the diseases illustrated in diagrams M and N. (1 mark)

(c) Name ONE crop attacked by disease M apart from tomatoes. (1 mark)

(d) State TWO cultural methods that can be used to control both disease M and N. (1 mark)

18.