

KCSE CLUSTER TESTS 11

Biology Paper 3

1. a) DIGESTIVE SYSTEM

b) Q appendix

R stomach

S liver

T ileum

c) Bile emulsify fat Bile provides alkaline mediual/neutralizes acidic chime

d) Long,coiled,presence of villi

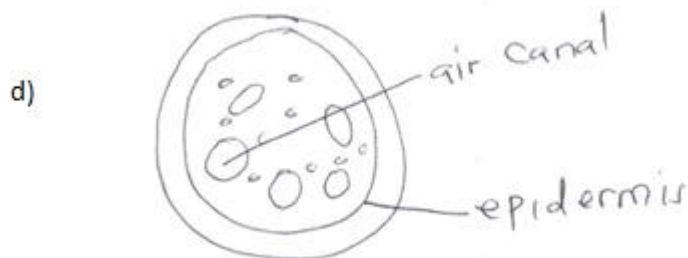
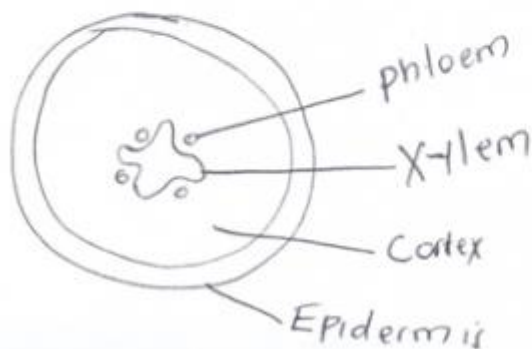
10 marks

2.

a)	Habitat	Reasons
	Fresh water	Presence of large air space /sclereloids

b)	Parts	class	Reasons
	Roots	Dicotyledonae	Star shaped xylem

c)



Class

Pisces

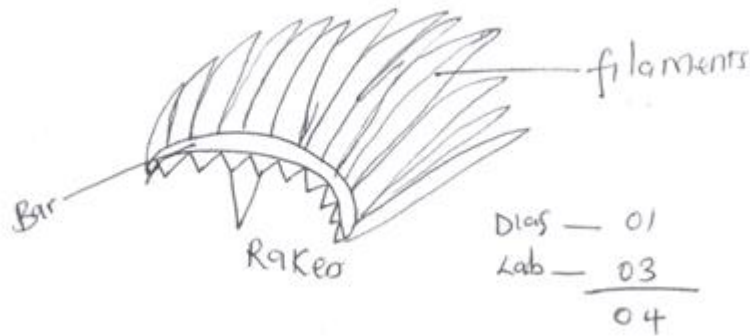
Reasons

have scales

Have lateral line

Have gills

i.



ii. Have numerous filaments, to increase surface area for gaseous exchange.

Have bony bar, to support the filament in position

Have rakers projecting to trap solid particles

10 marks

3. a) i. Length + 0.5 mm in distilled water (L1) - 0.5 mm in 10% salt solution (L2)

ii. L1 Hypotonic L2 hypertonic b) L1 the cylinder absorb water molecules by osmosis cell, bulge increasing in length L2 the cylinder lose water by osmosis, become flaccid reducing in size

c) i. Osmosis

ii. Support Feeding insectivorous plants Absorption of water by root hair from soil Movement of water from cell to cell.

10 marks