

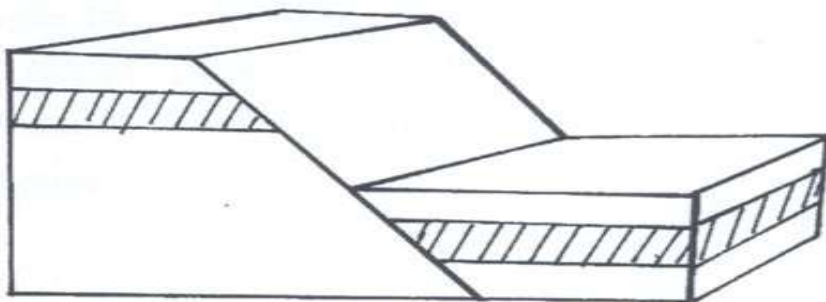
## FORM FOUR CLUSTER KCSE MODEL10

### GEOGRAPHY PAPER 1 QUESTIONS

#### SECTION A (25 Marks)

##### Answer all questions in this section

- Give two reasons why the earth is flattened at the poles and bulges at the equator. (2 marks)
  - Identify the characteristics of the core. (3 marks)
- State three natural causes responsible for climate change. (3 marks)
  - Identify two characteristics of the tropical monsoon climate. (2 marks)
- The diagram below represents a normal fault. On it mark and name. (3 marks)
    - Hade
    - Heave
    - Throw



- Distinguish between orogeny and orogenesis. (2 marks)
- Differentiate between natural vegetation and derived vegetation. (2 marks)
  - Give three uses of Savana vegetation. (3 marks)
- What is soil profile? (2 marks)
  - State three factors that influence leaching. (3 marks)

#### SECTION B (75 Marks)

##### Answer question 6 and any other two questions from this section

- Study the map of Migwani, 1:50,000 (sheet 151/1) provided and answer the following questions.
  - Give the six figure grid reference for the air photo principal point CPE/KEN/113 5101 found in the northern part of the area covered by the map near Itoloni dam. (1 mark)
    - What is the bearing of the secondary trigonometrical station found on the square 9264 from the school at Usiani grid square 9568? (2 marks)
    - What is the longitudinal extent of the area covered by the map? (1 mark) (iv) Name two human made features found in the grid square 4230. (2 marks)

b) i) Draw a rectangle 10cm by 8 cm to represent the area bounded by Eastings 07 and 10 and northings 63 and 67. Use a vertical scale of 1 cm represents 50 m. (4 marks)

(ii) On the sketch mark and name;

-Dry weather road

-River Ikoo

-Steep slope

(iii) Calculate the gradient of the slope between GR 0563 to 0663. (2 marks)

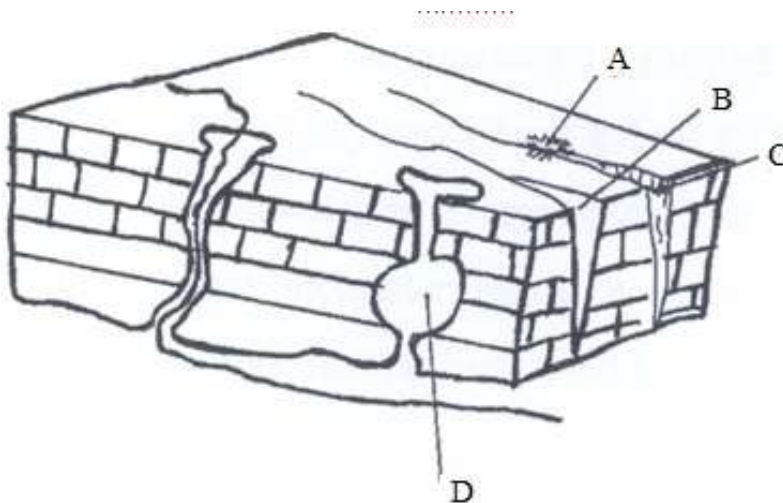
c) Quoting evidence from the map, describe three factors that have influenced population distribution in the area covered by the map. (6 marks)

d) Students of a school in Migwani carried a field study on human activities.

i) Citing evidence from the map, state two social services they identified. (2 marks)

ii) State two preparations they made for the study. (2 marks)

7. Study the diagram provided on a Karst scenery.



ai) Name the features A-D (4 marks)

ii) State three conditions necessary for the development of a Karst scenery. (3marks)

iii) State two characteristics of a Karst landscape. (2 marks)

b) Explain three benefits of a Karst landscape to man. (6 marks)

ci) What is an artesian well? (2 marks)

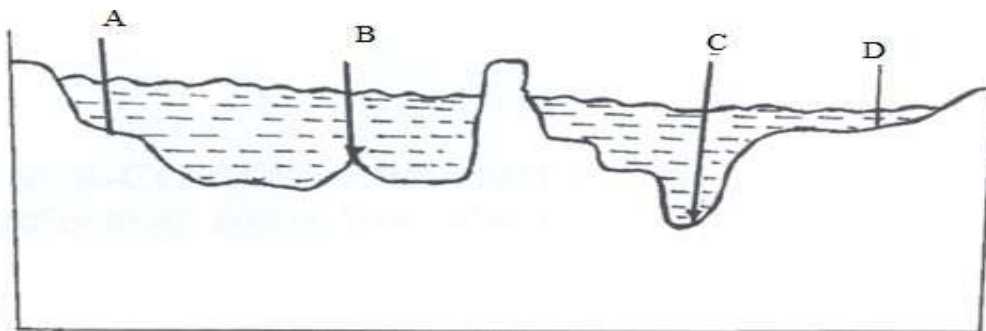
ii) Explain three conditions which are ideal for the formation of an artesian well. (6 marks)

d) Outline two significances of ground water to man. (2 marks)

8. a) State three factors that contribute to the development of hot desert. (3 marks)

b) With an aid of a well labeled diagram explain how the following features are formed.

- i. Zeugens (6 marks)
- ii. Rock pedestal (6 marks)
- c) Describe three factors that influence wind transportation in a desert. (3 marks)
- d) You are required to carry out a field study of an arid area in Kenya.
  - i) Formulate two objectives for the study findings. (2marks)
  - ii) State three measures the government would put in place to curb the desertification in Kenya. (3 marks)
  - iii) A part from wadi, name any two features resulting from action of water in arid areas. (2 marks)
- 9. ai) Distinguish between vulcanicity and volcanicity. (2 marks)
- ii) With an aid of a well labeled diagram, describe how a composite volcano is formed. (8 marks)
- b) State three characteristics of acidic lava. (3 marks)
- c) Explain three ways through which a caldera may be formed. (6 marks)
- d) Students from a school in Rift Valley carried out a field study on vulcanicity.
  - i) State two methods they may have used to record the data. (2 marks)
  - ii) State two problems they may encounter during the study. (2 marks)
  - iii) Give two follow up activities the students could have engaged in after field study. (2 marks)
- 10. a) The diagram below is a generalized cross-sectioned view of an oceanbed.



- i) Name the features marked a, b, c & d. (4 marks)
- ii) Give two ways in which islands are formed. (2 marks)
- b) Explain four causes of the horizontal movements of ocean water. (8 marks)
- ci) State four factors that may influence the size of a wave. (4 marks)
- ii) Give three conditions necessary for the formation of coral coasts. (3 marks)
- d) Explain two factors that influence marine deposition. (4 marks)