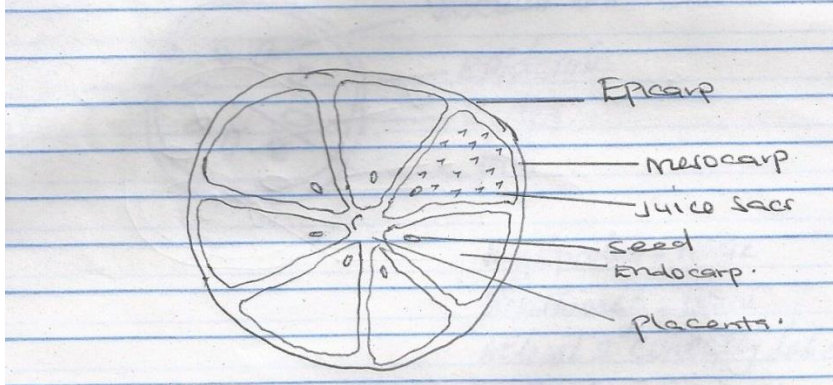


231/3 BIOLOGY MARKING SCHEME PAPER THREE

1.



Label . 1mk)(for two labeled part)

Magnification. (1mk)

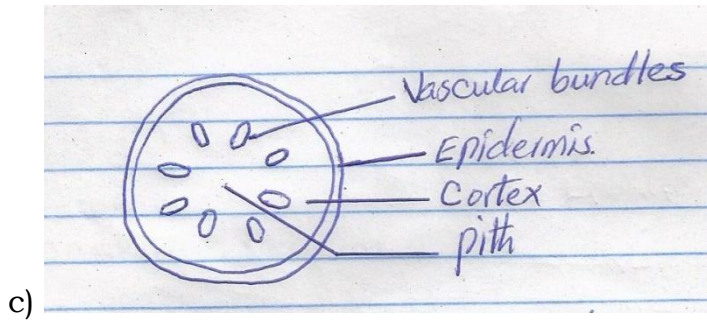
Proportionality. (1mk)

- b)
- i) Axile
 - ii) Animals.
 - iii) Brightly coloured.
 - Succulent/ juicy.
 - Scented
 (any one)
2. a) Q – Dicotyledonae Rej; Dicot/ dicotyledon.
 Reason; Network venation.
 Tap root system.
 Two cotyledons.
 (Any one mark the first answer given)

S- Monocotyledonae.

- Parallel venation
- Fibrous root.
-

- b) Q – Epigeal
 S – Hypogeal



Magnification – 1 mark

Proportionality – 1 mark.

(Atleast 2 correctly labeled
Part – 2mks)

- d) i) Q (rej. Bean seedling)
ii) Rhizobium bacteria ; Nitrogen fixation.
3. a) i) M- Neural spine (1mk)
N – Centrum. (1mk)
b) Passage of spinal cord . (1mk)
c) Thoracic region. (1mk)
i) Rib
ii) Phylum – Arthropods.
Reason – presence of exoskeleton.
- Have segment bodies.
 - Have jointed appendages.
- Class – insect

Reasons – body divided into 3 parts.

- Have 3 pairs of legs / six legs.
- Have one pairs of antennae (feelers is wrong)
- Have one pair of spiracles per body segment for gaseous exchange.
- Have one pair of compound eyes.

E N D