
KENYA NATIONAL EXAMINATION COUNCIL
REVISION MOCK EXAMS 2016
TOP NATIONAL SCHOOLS

MOI GIRLS HIGH SCHOOL
COMPUTER STUDIES
PAPER 1
MARKING SCHEME

SCHOOLS NET KENYA
Osiligi House, Opposite KCB, Ground Floor
Off Magadi Road, Ongata Rongai | Tel: 0711 88 22 27
E-mail: infosnkenya@gmail.com | Website: www.schoolsnetkenya.co

MOI GIRLS HIGH SCHOOL ELDORET KCSE TRIAL AND PRACTICE EXAM 2016
COMPUTER STUDIES

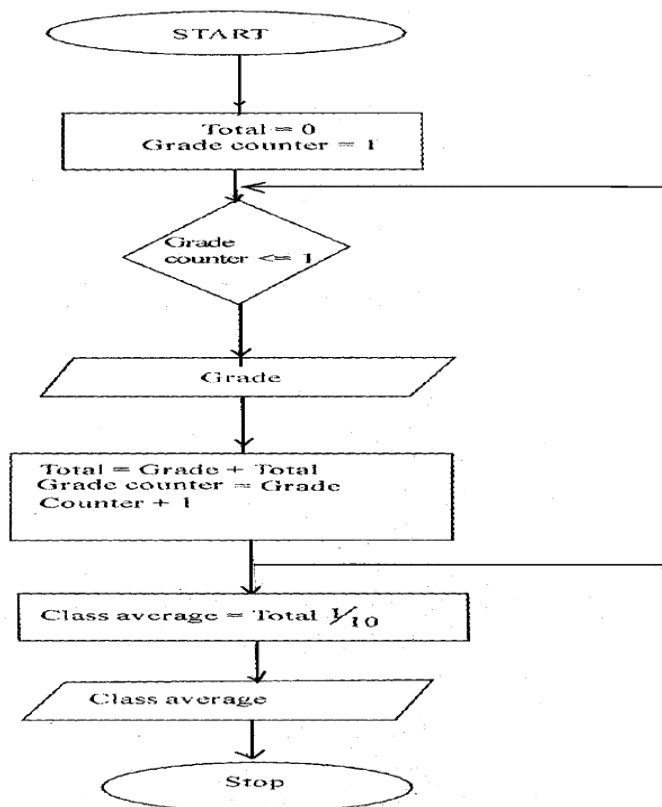
451/1 Paper 1

Marking scheme

Section a

1.
 - Main Memory (RAM)
 - Input and output devices / ports
 - The processor
 - Secondary storage devices
 - Communication device
- (Any 4 x ½ = 2 Marks)
2.
 - a. It is a hardcopy output device. They are mainly used in the fields of Engineering and architecture for producing graphic output on papers
 - b.
 - Flat bed plotter
 - Drum plotter
3.
 - i. Identing — moving the text away from the margin i.e **1st** line, full indent, hanging indent
 - ii. Alignment — refers to how text is lined up on the page relative to the right or centre of the page
 - iii. Footnote — are few notes / text found at the beginning of a page
 - iv. End note — are notes / text found at the bottom of a page
4.
 - Expert systems
 - Natural language processing
 - Voice recognition
 - Voice synthesis
 - Robotics
5.
 - COM ports are used for serial cables
 - LPT ports are used for parallel cables connection
6.
 - Suitability of accumulating data
 - Response time
 - Cost of initial installation and operations
 - Ease of development and subsequent maintenance
7.
 - Avoiding overcrowding of either machines or users in the room
 - Ensuring that the room has enough ventilation points like windows
 - Installing air conditioners
8.
 - Optical disks have larger storage area
 - Data stored in optical disks is more stable and permanent
 - Data stored in optical disks cannot be altered
9.
 - i. Careful study of an information system by experts to establish all weaknesses in the System that could lead to security threats
 - ii. These are special files that keep a record (log) of events on the use of computers and resources of an information system.
 - iii. Combination of letters and characters that deter unauthorized users of computer from accessing data
 - iv. Combination of letters and characters that deter unauthorized users of computers from accessing data
10.
 - Gas plasma
 - Electro— luminiscet
 - Thin film transistors (TFT)
 - Liquid crystal displays

11. - A process of generating personalized letter / documents by e.g letter with an existing data source such as address book,
12. - Primary file (main document)
- Secondary file (data source)
- Merged file (data source)
13. - Processor speed
- Memory capacity
- Cost
- Warranty
- User needs
- Upgradeability . compatibility
- Portability
14. - Sorting
- Filtering
- Forms
- Total/ subtotal function
15. - Changing of text colour
- Changing of font size
- Changing of don't style
- Alignment
16. a)



- b. - Desk checking — involves going through the program while still on paper before entering it in the program editor.
- using debugging utilities
- Using test data - programmer carries data with errors to test whether the system will come to a halt

- c.
 - Ifthen
 - IfThen..... Else
 - Nested if
 - Case selection
- d.
 - Document is easier
 - System maintenance is significantly easy
 - Testing is easier and more comprehensive
 - Flexibility — integration with other systems
 - Easy to debug
- 17. a.
 - i) $(2^0 \times 1) + (2^1 \times 1) + (2^1 \times 1) + (2^{-3} \times 1)$
 $2 + 1 + 0 + 0.25 + 0.125$
 $= 3.375_{10}$
 - ii. $(2^0 \times 1) + (2^{-1} \times 1) + (2^{-1} \times 1) + (2^{-2} \times 1) + (2^{-4} \times 1)$
 $2 + 1 + 0.5 + 0 + 0.125 + 0.0625$
 $= 36.875_{10}$
 - iii. $(2^0 \times 1) + (2^1 \times 1) + (2^2 \times 1) + (2^{-2} \times 0) + (2^{-3} \times 1) + (2^{-4} \times 0) + (2^{-5} \times 1)$
 $4 + 2 + 1 + 0.5 + 0 + 0.125 + 0 + 0.03125$
 $= 7.65625_{10}$
- b.
 - i. Back up data from external storage media
 - ii. Control access to data by enforcing security measures
 - iii. Design interface that minimize chances of invalid data entry
 - iv. Using devices that capture data at source
- c.
 - i. One can reach many respondents easily
 - ii. Since they are filed and returned in privacy more responses are possible
 - iii. Saves analysts time during investigation especially where residents are geographically scattered
 - iv. Questions can be presented consistently to all respondents **without** biasness
 - v. Are best suited because no details as long or long answers required but only straight forward answers.
- d. Recycle bin contains the already deleted files folders and can be restored if users need item
- 18. a.
 - Has high bandwidth hence high carrying capacity
 - Its immune to electromagnetic interference
 - Cover large distance because of low attenuation
 - Very secured because of low untappable
- b.
 - Dynamic ram is slow while static is fast
 - Dynamic needs refreshment while static doesn't need
 - Dynamic loses its content while even if power is still on
 - While static keeps content provided power is still on
- c.
 - i. update — updates data in a table
 - ii. Append query — adds data in a table from one or more labels
 - iii. Make table query deletes specified records from one or more tables
- d. Source program is a program code that the programmer enters in the program editor that is not yet translated into machine readable form while the object is a program code that is in machine readable form
- e. Distinguish between a mouse pointer and a insertion point. The insertion point is a blinking vertical bar indicating where the text will be inserted as you type. While the mouse pointer is an arrow or object in form of a picture that is used to point on the task to be performed on application window
- 19. a.
 - enforce regular changes of passwords
 - Have a minimum length of passwords
 - Carry out spot checks to ensure passwords are not written down and kept by

- the computer
- Passwords should contain both letters and numbers
- Don't use same passwords on different computers
- b.
 - Input
 - Out put
 - Process / CPU
 - Quite simply input
- c.
 - How to install, start and run the system
 - Interface i.e how the system appears when running
 - How to carry out various task
 - Error correction and troubleshooting guide
- e.
 - Java script
 - Vb script
 - HTML
 - Hypertext processor
- 20. a.
 - Questionnaires
 - Interviews
 - Observations
 - Note taking
 - Study of available recorded / documents
 - Tape recording
- b.
 - i. Process of transferring information from a remote computer to a local storage
 - ii. Text or picture on an electronic document especially webpage, that causes other web pages to open when the link is clicked
 - iii. These are many applications that enable a person to access the internet
 - iv. Companies that offer internet services to end users
- c.
 - Sorting refers to arranging data in a pre-defined order either ascending and descending while filtering is a quick and efficient method of finding and working with a subject of data within a list
- d.
 - i. A mail sent to many people indiscriminately
 - ii. A flat circular plate covered in magnetic which is able to store data on concentric tracks
 - iii. Refers to a modem fixed on the motherboard.
- f.
 - Refers to windows icons mouse and pointing devices found on graphical user interfaces