
**KENYA NATIONAL EXAMINATION COUNCIL
REVISION MOCK EXAMS 2016
TOP NATIONAL SCHOOLS**

**MOI GIRLS HIGH SCHOOL NAIROBI
COMPUTER STUDIES
PAPER 1
MARKING SCHEME**

SCHOOLS NET KENYA
Osiligi House, Opposite KCB, Ground Floor
Off Magadi Road, Ongata Rongai | Tel: 0711 88 22 27
E-mail: infosnkenya@gmail.com | Website: www.schoolsnetkenya.co

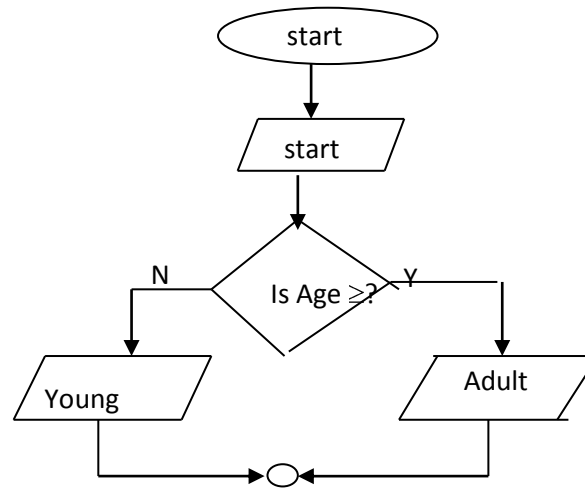
MOI GIRLS HIGH SCHOOL - NAIROBI KCSE TRIAL AND PRACTICE EXAM 2016

COMPUTER STUDIES PAPER ONE

MARKING SCHEME

1. A core 2 duo processor contains two processors contains two processors or cores in a single silicon chip, Quad core has four processors on a single chip.
2. (a) Images displayed in gasplasma do not suffer from angle distortion
(b) (a) low power requirement
(b) High efficiency
(c) long life
3. (a) Means that the license to the software is freely made available to any interested user at no fee.
(b) Ubuntu, Fedora, Susse and Red hat
4. Compatibility, refers to ability to use software without modification
Interoperability, refers to ability of software to work across other platform,
5. (a) System registry is windows database that keeps details about programs installed in a computer
(b) Corrupted operating system
Hard disk failure
Infection by malware such as worms
6. Pressing Ctrl + Alt + Del keys during booting
7. When saving a document
For the first time
In a new location
Different file format
With a new name
8. Print out of paper
Paper jam
Printer not on
Publication overflows the margin
9. Science and technology act cap 250 of 1997
Kenya broadcasting corporation act of 1988
Kenya communication act of 1998
10. 1110101_2
 101.010_2
 1001.011_2
(b) $EFE_{16} = 3838_{10}$
11. Control data access both physically and electronically
Provide users with easy to use data input mechanisms
Use data detection and correction measures
Use antivirus software to protect data from being corrupted
12. (a) It is the actual delivery and installation of the system the system for use in the day to day operating system environment for the users to start using it.
(b) File conversion, staff training, and changeover
13. Router interconnects different networks and directs different data packets
Gateway provides access to wide area network or internet
14. (a) Teletext, news and information is provided on TV screen to subscribers
(b) Video text provides two way communication and used in reservation systems
15. Computer technician
Computer engineer
Computer programmer

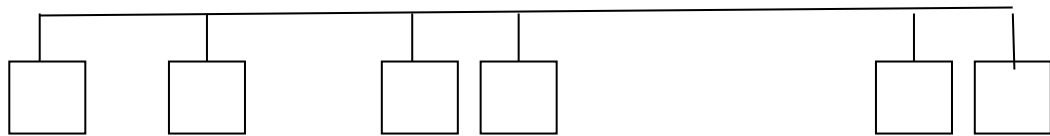
16. a



- (b) Looping –condition is tested at end of loop
 Selection-condition is tested at beginning

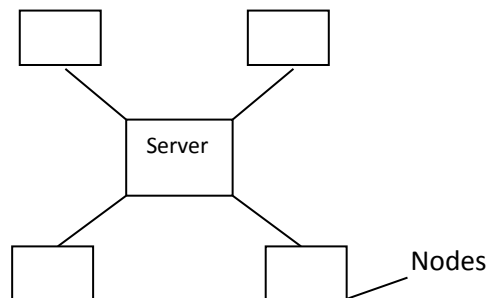
- © (i) Documentation
 (ii) Testing
 (iii) design
 (iv) Implementation

17. (a) Bus



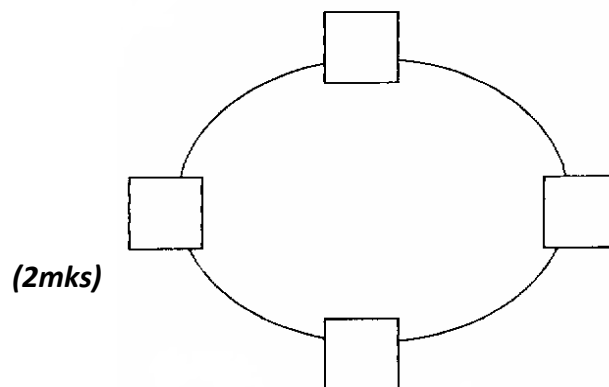
correct drawing & explanation = (2mks)

(ii) Star



Correct drawing and explanation (2mks)

(iii) Ring



(2mks) correct drawing and explanation

- (b) (i) **Print server** – allows user of the network to share the printers, maintains a print queue and ensures that print outs from different users do not get mixed up.
(2mks) for correct explanation.
- (ii) **Internet server** – Will connect to the internet through an ISP. Will deal with request for information from the www.
 (iii) **Intranet server**. Will hold web pages that can be accessed by the users:
 Local information that the teacher wish to be available to students will be placed there.**(2mks) for correct explanation**
- © An editor or word processor is used to prepare the message. The email address of the receiver is added and the message is sent.
Detailed explanation on e-mail writing is required and can earn a student full marks
18. (a) (i) fire in the computers – Take regular backups and store them away from the computer.
 (ii) Hacker – Use / employ passwords to access the system. (2mks)
 (ii) Virus attack – Virus checker (antivirus) should be installed and update regularly
 (iv) Disgruntled ex employees – passwords locking the computer room
 (2mks)
(2mks) for correct explanation
- (b) **Private data** / information that belongs to an individual and is not accessed by or disclose to a person unless with direct permission from the owner. (2mks)
 Confidential data: - Data / information held by a government or organization about people can be seen without necessarily informing the owner.
- (c) **Sources of virus**
 (i) Contact with contaminated systems
 (ii) Pirated software
 (iii) Free ware and shareware
 (iv) Updates of software and distributed via networks.
19. (a) (i) Computer engineers – This is a person who is skilled in designing and developing computer components such as storage devices and other electronic components. (1mk)
 (ii) Software Engineers – This is a person who is skilled in software development and technical operation of a computer hardware. (1mk)
 (iii) Computer technician – These are skilled persons who maintain, upgrade and repair computers to ensure that all the devices are in good working condition (1mk)
- (b) Duties of an information system manager
 - make sure that all tasks in IT department are done correctly and on time
 - Preparing budgets for the departments
 - Keeping the department inventory records up-to-date
 - Managing the human resource within the department **(Any 3 x 1)3mks**
- (c) (i) Universities – Kenyatta, Nairobi, JKUAT, Egerton Universities
 (ii) Polytechnics – Kenya, Mombasa, Eldoret, Kisumu poly
 (iii) College – Institutes e.g. Rift valley and private colleges etc **(1x3)**
- b) Formatting features
 -Changing fonts (type, style, and size)
 -Changing text colour
 - Underlining
 -Bolding

-Italising ($\frac{1}{2} \times 4$) (2mks)

e) Defn. of **electronic spreadsheet**

- A electronic spreadsheet is application software consisting of series of rows and columns that form cells and are used for the manipulation of numeric data.

(1mk)

(f) (i) Range

- A range is a rectangular arrangement of cells specified by the address of its top left bottom right cells, separated by a colon (:) e.g. (A1: B8) (1mk)

(ii) "What if" **analysis**

- This involves changing the value of one of the arguments in a formula to see the difference the change would make on the results of the calculation

(iii) Automatic recalculation

- This is the feature in electronic spreadsheet which automatically adjusts the result of a formula if the values in worksheet are changed. (1mk)

20. (i) $24; 35_{10} = x_2$

2		24	R
2	12	0	
2		6	0√
2	3	1	
2	1	1	
	0		

ignored

$$= 1100_2 \checkmark$$

$$= 1100.01011_2 \checkmark 1$$

(ii) $6 AB_H = x_{10}$

6	A	B
(6×16^2)	10×16^1	11×16^0

$$6 \times 256 + 10 \times 16 + 11 \times 1$$

$$1536 + 160 + 11$$

$$= 1707_{10} \text{ (1mk) - Award 0 if no radix 5.}$$

√ 1mk

(iii) 20

2			20	R 2		25	R
2	10	0		2	12	1	
2	5	0 2	6	0			
2	2	1 2	3	1			
2	1	0 2	1	1			
	0	1			0	1	
00010100 ₂ √ 1				= 00011101 ₂ √			

$$\text{One's complement of } -25 = 11100010 \checkmark 1$$

$$\text{Two's complement of } -25 \quad \underline{1 + \checkmark 1}$$

$$11100011 \checkmark 1$$

$$00010100$$

$$\underline{11100011} +$$

$$\underline{11110111}$$

$$= 11110111_2 \checkmark 1$$