

**441/2  
HOMESCIENCE  
PAPER 2  
PRACTICAL  
(CLOTHING AND TEXTILE)  
JULY / AUGUST 2014  
TIME: 2 ½ HOURS**

## **NANDI NORTH SUB-COUNTY JOINT EVALUATION 2014**

***Kenya Certificate of Secondary Education (K.C.S.E.)*  
HOMESCIENCE  
PAPER 2  
TIME: 2 ½ HOURS**

A pattern of a child's dress is provided. You are advised to study the sketches, instructions and the layout carefully before you begin the test.

### **MATERIALS PROVIDED**

1. Pattern pieces
2. Plain light weight fabric 60cm by 90cm wide
3. Sewing thread to match the fabric
4. A 6" zip to match the fabric.
5. An embroidery thread.
6. One large envelope.

### **THE TEST**

Using the materials provided, cut out and make the LEFT HALF of a child's dress to show the following processes:-

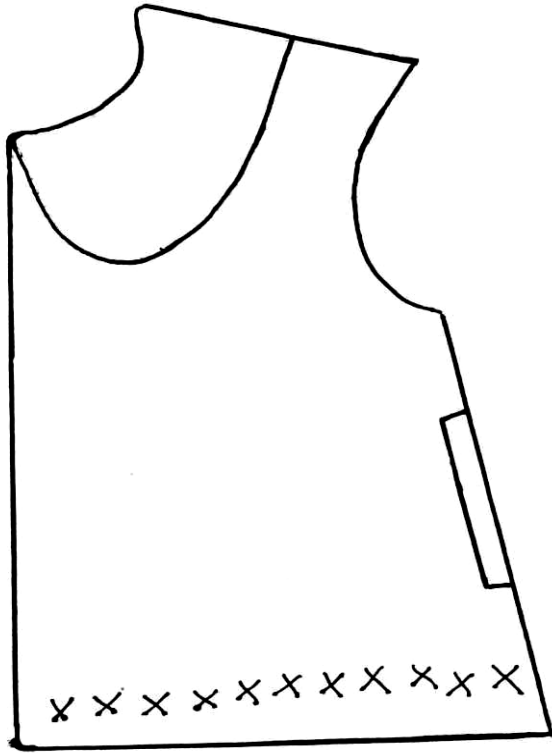
- (a) Joining of the shoulder seam using a double stitched seam.
- (b) Joining of the side seam using an open seam.
- (c) Fixing the Zip fastener using the concealed method.
- (d) Preparation of an interfaced collar.
- (e) Joining the Back and Front neck facings.
- (f) Attaching the collar using the facings.
- (g) Secure the lower hem using herringbone stitches. (Only the Dress front)

At the end of the examination, firmly sew onto your work, on a single fabric, a label bearing your **Name** and **index number**.

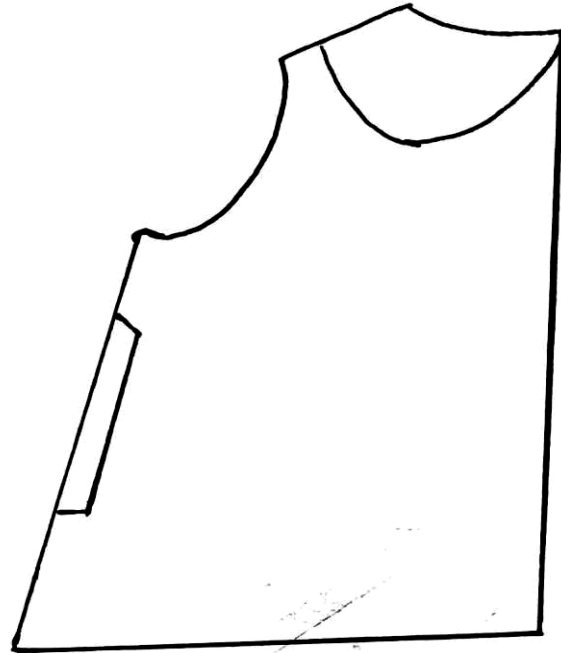
Remove needles, pins and unnecessary threads from your work, then fold your work neatly and place it in the envelope provided.

Do not put scraps of fabric in the envelope.

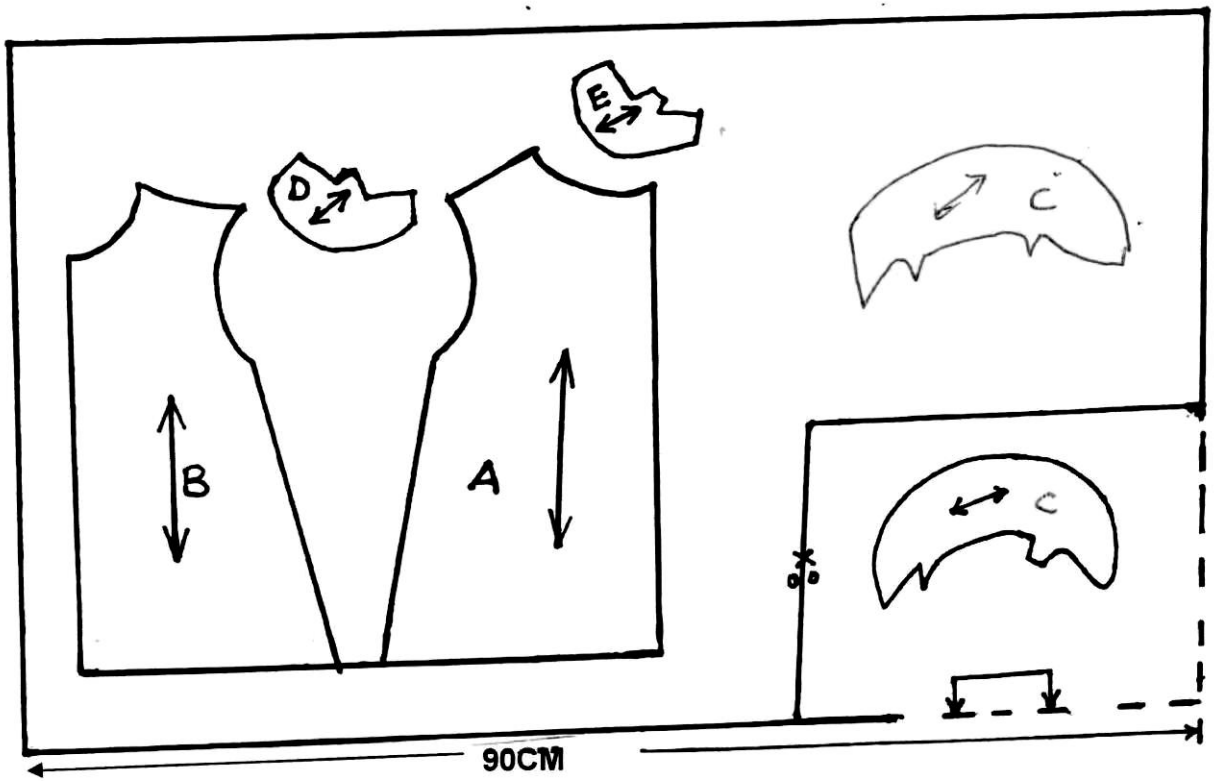
**BACK VIEW**



**FRONT VIEW**



**THE LAYOUT (NOT DRAWN TO SCALE)**



**ANSWERS:**

Order a copy of answers from [www.schoolsnetkenya.com/order-e-copy](http://www.schoolsnetkenya.com/order-e-copy)

NB> We charge Kshs. 100 ONLY to meet website, e-resource compilation and provision costs