

**441/2
HOMESCIENCE
PAPER 2
PRACTICAL
(CLOTHING AND CONSTRUCTION)
JULY / AUGUST 2014
TIME: 2½ HOURS**

NANDI CENTRAL SUB-COUNTY JOINT EVALUATION 2014

***Kenya Certificate of Secondary Education (K.C.S.E.)*
HOMESCIENCE
PAPER 2
TIME: 2½ HOURS**

INSTRUCTIONS TO CANDIDATES

1. This paper consists of 3 printed pages.

2. Candidates should check the question paper to ascertain that all the pages are printed as indicated and that no questions are missing.

A pattern of a girls' skirt is provided. You are advised to study the sketches, instructions and layout carefully before you begin the test.

MATERIALS PROVIDED

1. Pattern pieces

- A. skirt front
- B. skirt back
- C. pocket
- D. waistband
- E. frills
- F. interfacing

2. Plain lightweight cotton fabric.

3. Sewing thread to match the fabric.

4. One large envelope

THE TEST

Using the materials provided, cut out and make the RIGHT HALF of the skirt to show the following:-

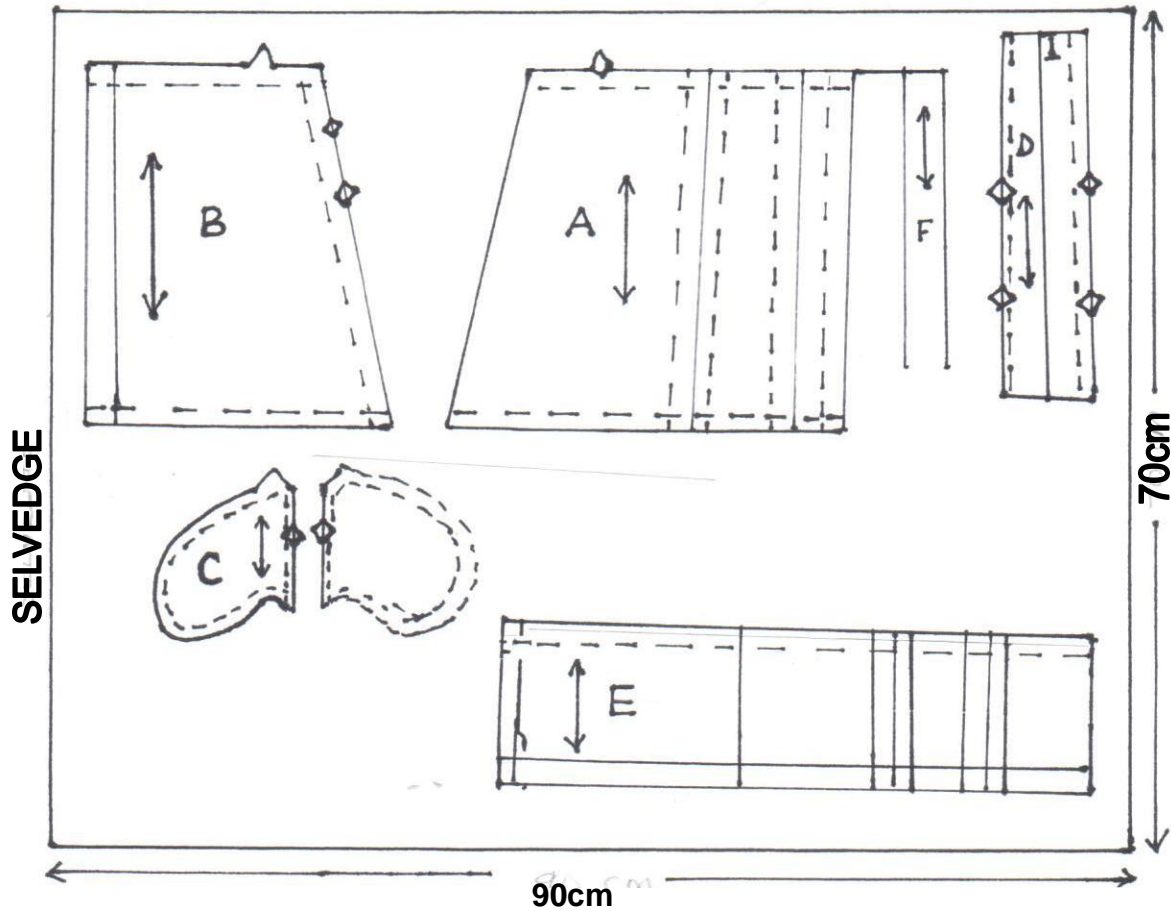
- (a) Preparation of tucks on the skirt front.
- (b) Attachment of the front pocket to the skirt front and back pocket to the skirt back. **DO NOT TRIM OR NEATEN THE SEAM.**
- (c) Making the side seam using an open seam. (**NEATEN BELOW THE POCKET ONLY**)
- (d) Joining of the pocket bag using a plain seam and neatening half of the seam using **blanket stitches.**
- (e) Preparation of pleas on the frill.
- (f) Attachment of the frill to the skirt using an overlaid seam. Neaten 8cm of the front seam from the C.F. using overcasting stitches
- (g) Preparation of an interfaced waistband holding the interfacing onto the waistband using diagonal tacking.
- (h) Attaching of the waistband and finishing the front with even tacking and back long and short tacking.
- (i) Making of a buttonhole on the bark waistband.
- (j) Management of the lower edge of the frill.
 - (i) Front skirt using hemming stitches 5cm length from the C.F.
 - (ii) Back skirt using slip hemming 5cm length from C.B.

At the end of the examination, firmly sew onto your work on a single fabric a label bearing your **Name** and **Index number**.

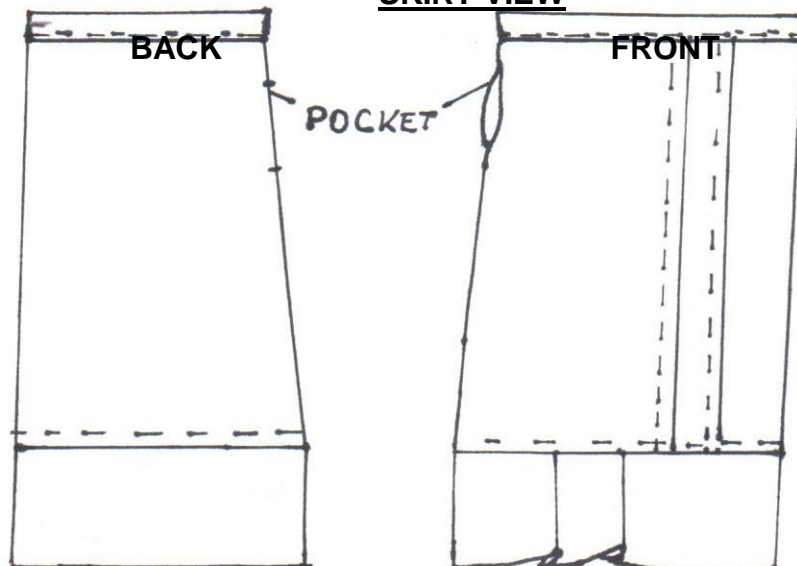
Remove the needle, pins and loose threads from your work. Fold your work neatly and place it in the envelope provided.

Do not put scraps of fabric in the envelope.

THE LAYOUT (NOT DRAWN TO SCALE)



SKIRT VIEW



ANSWERS:

Order a copy of answers from www.schoolsnetkenya.com/order-e-copy

NB> We charge Kshs. 100 ONLY to meet website, e-resource compilation and provision costs