

NAME: INDEX NO:,,,,

CANDIDATES SIGNATURE...

DATE:.....

441/ 2
HOMESCIENCE
(CLOTHING CONSTRUCTION)
PAPER 2 PRACTICAL
JULY /AUGUST 2014
TIME: 2½ HOURS

**NAKURU DISTRICT SEC. SCHOOLS TRIAL
EXAMINATION- 2014
Kenya Certificate of Secondary Education**

HOME SCIENCE (CLOTHING CONSTRUCTION)
PAPER 2
2 ½ HOURS

INSTRUCTIONS TO CANDIDATES

- a) This paper consists of 3 printed pages
- b) Candidates should check the question paper to ascertain that all the pages are printed as indicated and that no questions are missing

TURN OVER

A pattern of a pair of shorts is provided. You are advised to study the sketches, instructions and the layout carefully before you begin the test.

MATERIALS PROVIDED

- 1 Pattern pieces
 - A. Short front
 - B. Short Back
 - C. Pocket
 - D. waistband
 - E. Waistband interfacing
2. Plain light weight cotton fabric 60cm long by 90 cm wide
3. Cotton Sewing thread to match the fabric .

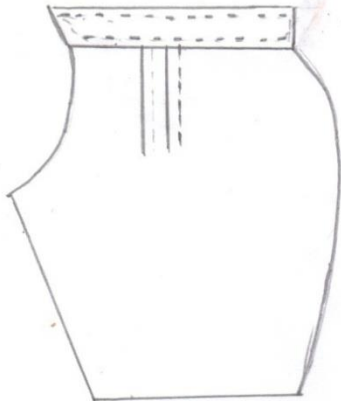
THE TEST

Using the materials provided, cut out and make up the **LEFT LEG** of the short to show the following processes.

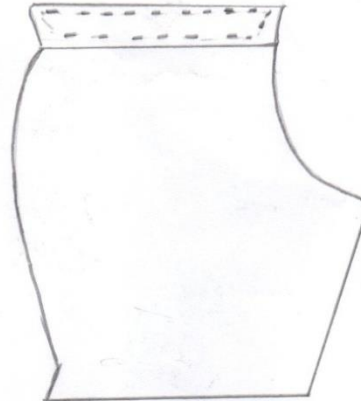
- (a) Making of the front tucks
- (b) Attachment of upper pocket to the short front and lower pocket to the short back
(do not trim or neaten the seam)
- (c) Making the side seam using an open seam
(Neaten seam below the pocket)
- (d) Working of the inner leg seam using French seam.
- (e) Management of the short hem. Hem half of the lower side using hemming stitches.
- (f) Preparing and attaching the interfaced waistband using machine stitches.

At the end of the examination, firmly sew onto your work, on a single fabric, a label bearing your name and index number. Remove the needle and pins from your work. Then fold the work neatly.

VIEW OF A PAIR OF SHORTS

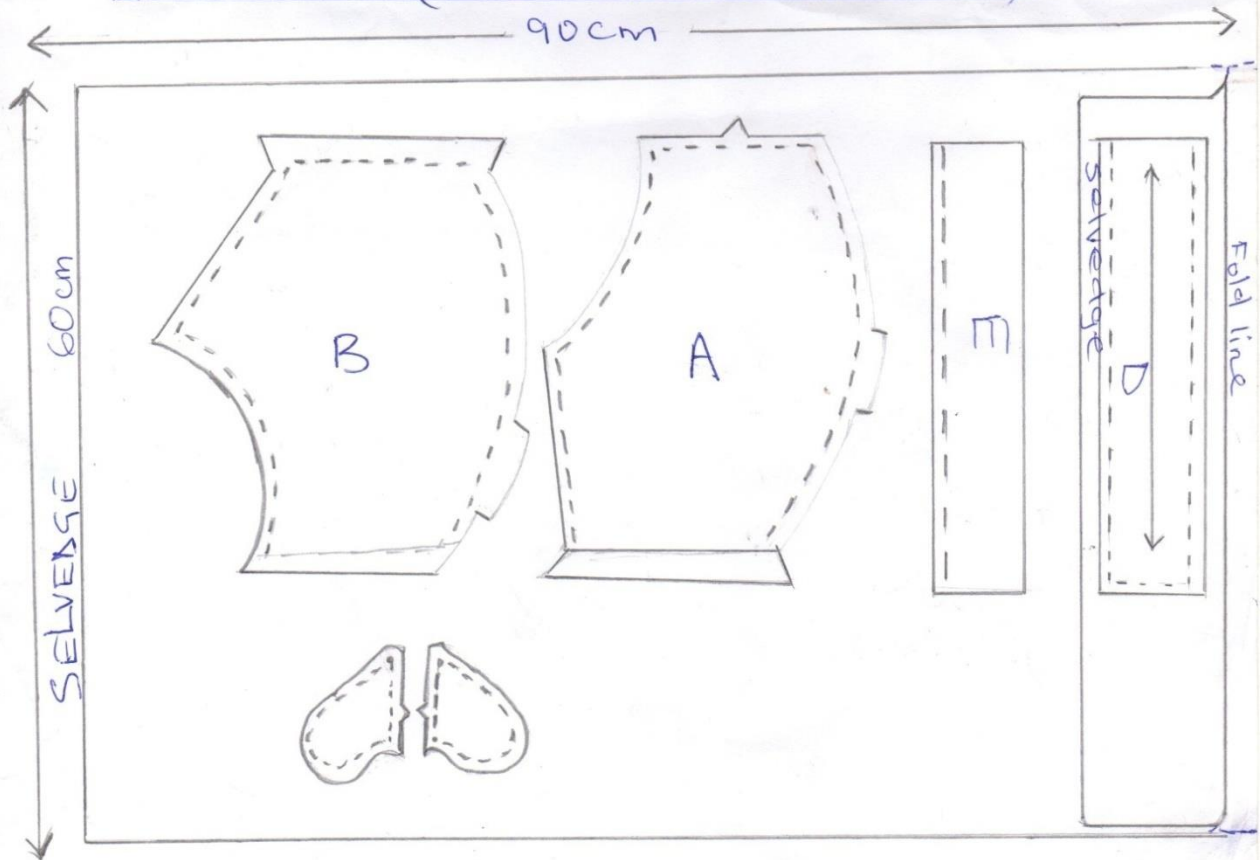


FRONT



BACK

LAYOUT (NOT DRAWN TO SCALE)



ANSWERS:

Order a copy of answers from www.schoolsnetkenya.com/order-e-copy

NB> We charge Kshs. 100 ONLY to meet website, e-resource compilation and provision costs