

**441/2
(CLOTHING CONSTRUCTION)
PAPER 2
(PRACTICAL)
JULY/AUGUST 2014
TIME: 2½ HOURS**

KIHARU/KAHURO DISTRICT JOINT EXAMINATION – 2014

**Kenya Certificate of Secondary Education
CLOTHING CONSTRUCTION
PAPER 2
(PRACTICAL)
TIME: 2½ HOURS**

A pattern of a child's dress is provided. You are advised to study the sketches, question paper and the layout carefully before you begin the test.

MATERIALS PROVIDED:

1. Pattern pieces.
 - A Dress front
 - B Dress back
 - C Sleeve
 - D Back neck facing
 - E Front neck facing
2. Plain white cotton fabric 70cm long by 90cm wide.
3. Sewing thread to match the fabric.
4. One large envelope.

THE TEST:

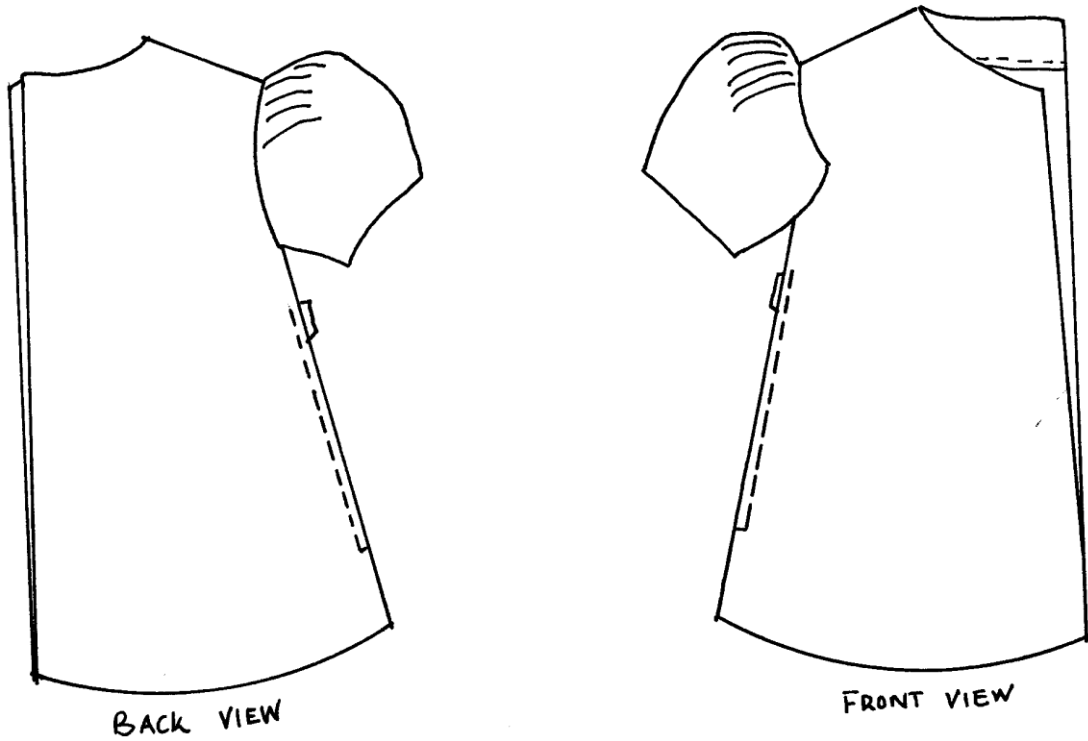
Using the materials provided, cut out and make up the Left Half of the child's dress to show the following.

- (a) The making of machine fell seam at the shoulder.
- (b) The joining of the side with neatened open seam and the preparation and fixing of the zip using semi concealed (edge to edge) method.
- (c) The working of the sleeves underarm seam using a neatened open seam.
- (d) The preparation gathering and attachment of the sleeve on the armhole.
Note: Neaten only the front of the armhole seam by overcasting.
- (e) Joining of the back and front neck facings and neatening the raw edges.
- (f) Attachment of the neck facings to the neckline of the garment.

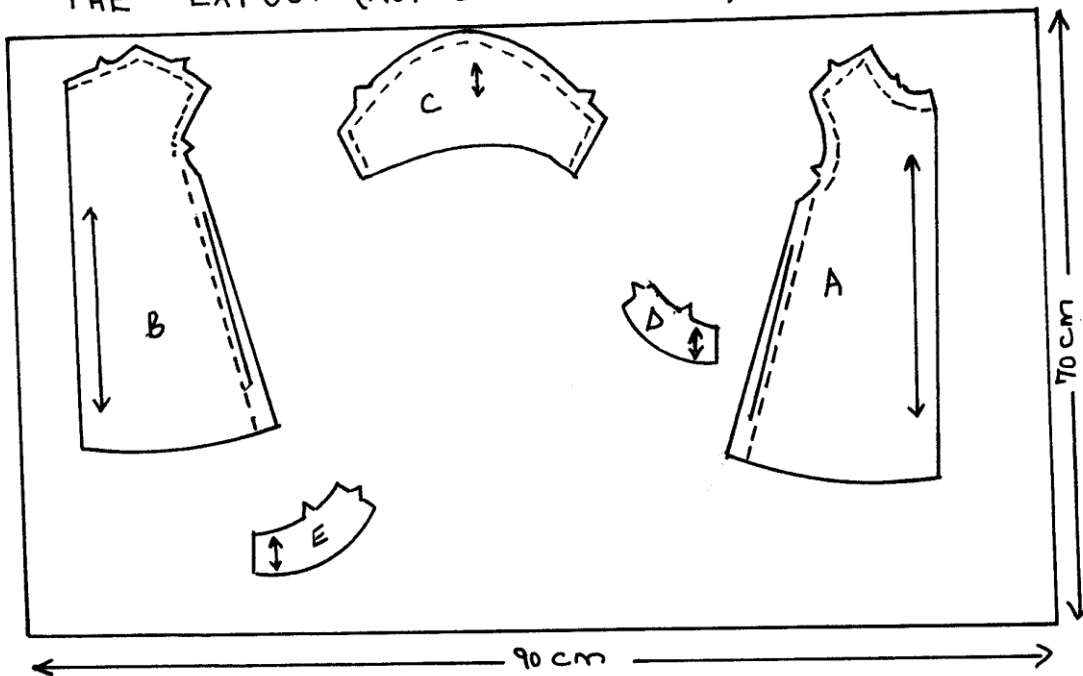
At the end of the examination, firmly sew on to your work on a single layer of fabric a label bearing your name and index number.

Remove needles and fold your work neatly and place it in the envelope provided. Do not put scraps of fabric.

2
CHILD'S DRESS



THE LAYOUT (NOT DRAWN TO SCALE)



ANSWERS:

Order a copy of answers from www.schoolsnetkenya.com/order-e-copy

NB> We charge Kshs. 100 ONLY to meet website, e-resource compilation and provision costs