

NAME .....

DATE .....

INDEX NO. ....

CANDIDATE'S SIGNATURE .....

**441/ 2**

**HOME SCIENCE**

**Paper 2 (Practical)**

**CLOTHING & CONSTRUCTION**

**JULY/AUGUST 2014**

**TIME: 2 ½ HOURS**

**MBOONI WEST SUB - COUNTY FORM FOUR JOINT EVALUATION TEST 2014**

*Kenya Certificate of Secondary Education (K.C.S.E)*

**441/ 2**

**HOME SCIENCE**

**Paper 2 (Practical)**

**CLOTHING & CONSTRUCTION**

**TIME: 2 ½ HOURS**

This paper consists of 2 printed pages.

Candidates should check the question paper to ascertain that all pages are printed and no questions are missing

E-resources available online at [www.schoolsnetkenya.com](http://www.schoolsnetkenya.com) / Email: [infosnkenya@gmail.com](mailto:infosnkenya@gmail.com) / Tel.: +254202319748

A pattern of a child's skirt is provided. You are advised to study the sketches, the question paper and the layout before the test

### **MATERIALS PROVIDED**

1. Pattern pieces
  - A. Skirt front
  - B. Skirt back
  - C. Frill
  - D. Pocket
  - E. Back waistband
  - F. Front waistband

NB: Interfacings for front and back waist bands are cut with pieces E and F from the same fabric

2. Plain light weight cotton fabric 65cm by 90cm wide
3. Zip size 15cm long
4. A button, 1cm in diameter
5. Sewing thread to match the fabric colour
6. One large envelope

### **THE TEST**

Using the materials provided, cut out and make up the LEFT HALF of the child's skirt to show the following

- a) The making of the back and front darts
- b) The preparation and attachment of the patch pocket
- c) The making of a neatened side seam and attachment of the zip using the concealed method.
- d) The preparation of the interfaced front and back waistbands
- e) The attachment of waistband to the skirt  
Finishing the front waistband by hemming and the back one by tacking
- f) The topstitching of the waistbands
- g) The preparation of the frill and attaching it using overlaid/ lapped seam
- h) The neatening of ONLY half of the frill seam
- i) The making of the buttonhole and attaching the button

### **OMIT**

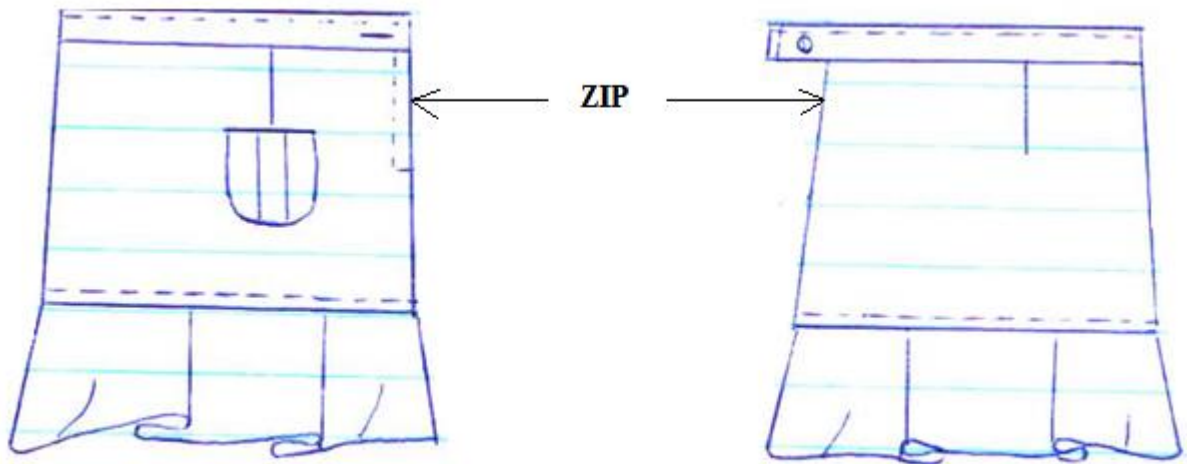
The hem management

At the end of the examination, firmly sew onto your work, on a single fabric a label bearing your name and index number. Remove the needle and pins from your work

Then fold your work carefully and place it in the envelope provided.

Do not put scraps of materials in the envelope

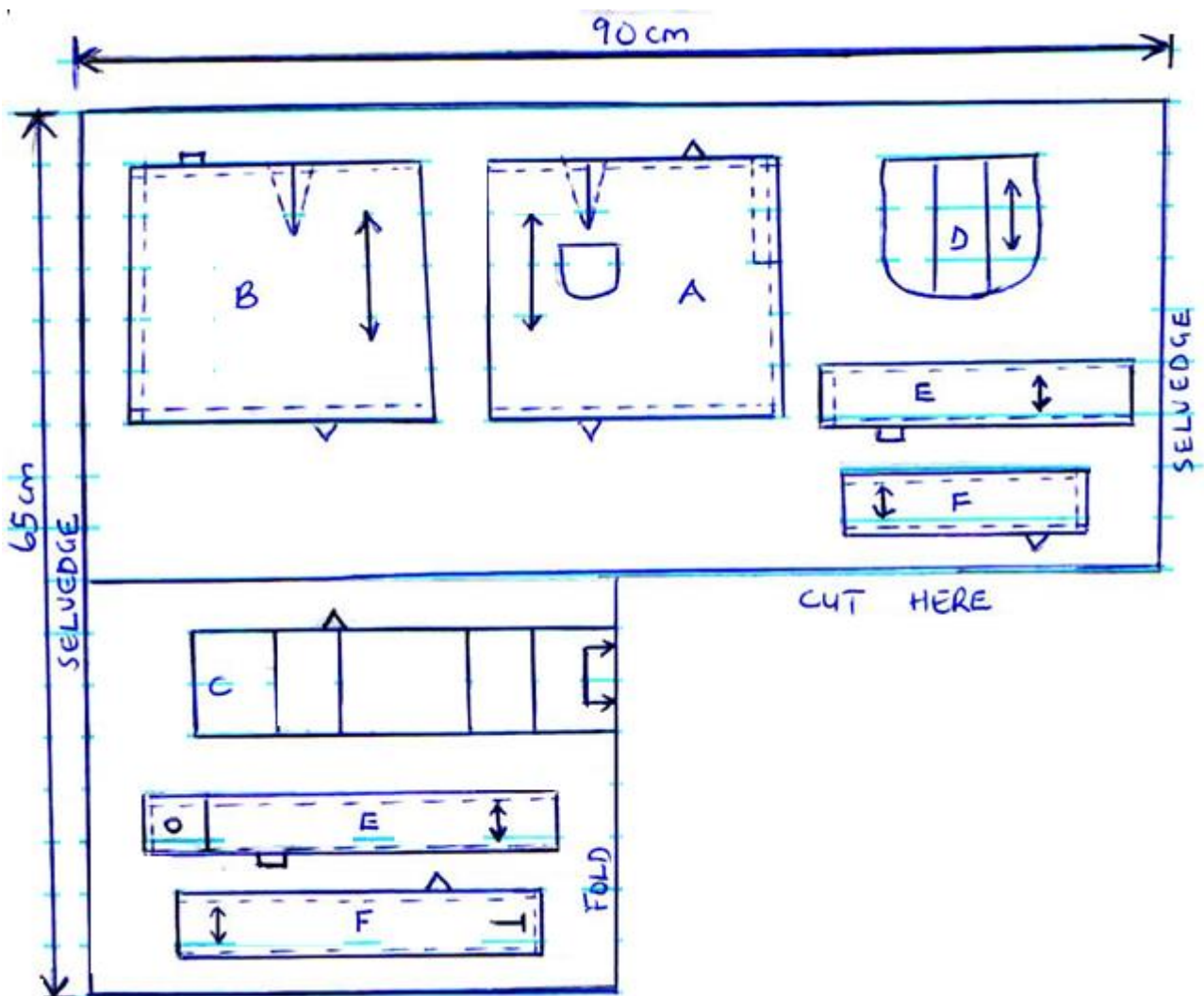
### A CHILD'S SKIRT



**FRONT VIEW**

**BACK VIEW**

LAYOUT (NOT DRAWN TO SCALE)



**ANSWERS:**

Order a copy of answers from [www.schoolsnetkenya.com/order-e-copy](http://www.schoolsnetkenya.com/order-e-copy)

NB> We charge Kshs. 100 ONLY to meet website, e-resource compilation and provision costs