

Name.....index no.....

School.....signature.....

441/2  
CLOTHING AND TEXTILES  
HOME SCIENCE  
PAPER 2  
July/august .2014

# THE LAMU COUNTY MOCK EXAMINATIONS 2014

*(Kenya certificate of secondary education (KCSE)*

411/1

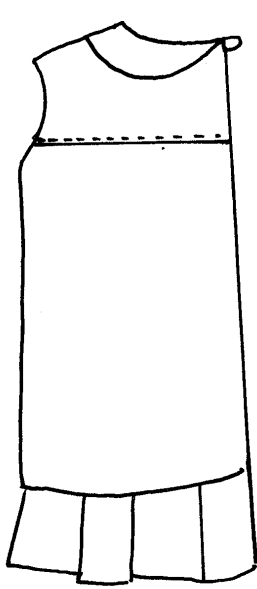
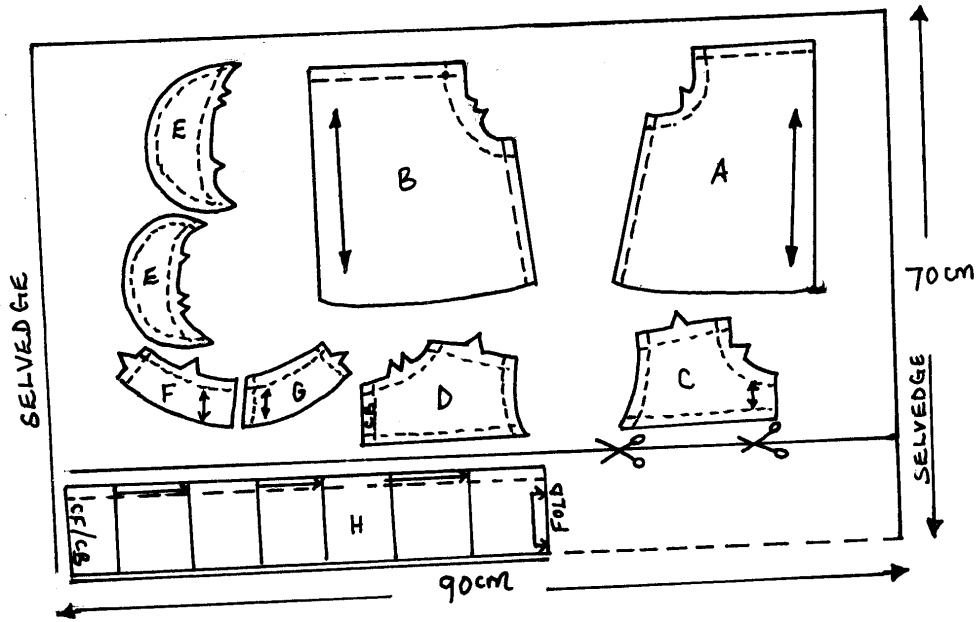
HOME SCIENCE PAPER 2

THEORY

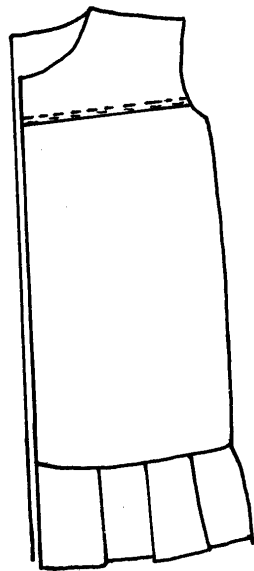
*Time: 2 ½*

*This paper consists of 6 printed pages candidates should check the question paper to ensure that all the pages are printed as indicated and no questions are missing*

THE LAYOUT (Not drawn to scale)



BACK VIEW



FRONT VIEW

**A pattern of a child's dress is provided. You are advised to study the sketches instructions and the layout before you begin the test**

### **MATERIALS PROVIDED**

1. **Pattern pieces:**
  - A Skirt front
  - B Skirt back
  - C front yoke
  - D Back yoke
  - E Collar
  - F Front neck facing
  - G Back neck facing
  - H Frill
2. Plain light weight cotton 90cm wide by 70cm long
3. Sewing cotton thread to match the fabric
4. One large envelope

### **THE TEST**

Using the materials provided, cut and make up the LEFT HALF of a child's dress to show the following processes:

- (a) The joining of the front yoke to the front skirt and back skirt using unneaten overlaid seam (ease in the skirts to the yokes)
- (b) The making of the shoulder seam using an open seam
- (c) The making of the side seam using a French seam.
- (d) The joining of the front and back facings and neatening of the free edge
- (e) The preparation of the collar
- (f) The attachment of the collar
- (g) The preparation of the frill and its attachment using an open seam. Neaten half the seam only
- (h) Making a loop for a 1cm button

### **Omit hem management**

At the end of the examination, firmly sew onto your work, on a single fabric a label bearing your name and index number. Remove the needle and pins from your work, then fold your work neatly and place it in the envelope provided.

**Do not** put scraps of fabric in the envelope

**ANSWERS:**

Order a copy of answers from [www.schoolsnetkenya.com/order-e-copy](http://www.schoolsnetkenya.com/order-e-copy)

NB> We charge Kshs. 100 ONLY to meet website, e-resource compilation and provision costs