

NAME:.....INDEX NO:.....
SCHOOL:.....CANDIDATE SIGN:.....
DATE.....

441/2
HOME SCIENCE
PAPER 2
(Clothing construction)
JULY/ AUGUST 2014

TIME: 2 ½ HOURS

KISII SOUTH DISTRICT JOINT EVALUATION EXAM 2014
Kenya Certificate of Secondary Education (KCSE)

441/2
HOME SCIENCE
PAPER 2
(Clothing construction)
JULY/ AUGUST 2014

TIME: 2 ½ HOURS

Instructions to candidates.

This paper consist of 4 printed pages.
Candidate should check the question paper to ascertain all pages are printed as indicated And
E-resources available online at www.schoolsnetkenya.com / Email: infosnkenya@gmail.com / Tel.: +254202319748

no questions are missing.

A pattern of a pair of shorts is provided. You are advised to study the sketches, instructions and the layout carefully before you begin the test.

Materials provided.

1. Pattern pieces.
 - A. Short front.
 - B. Short back.
 - C. Pocket.
 - D. Waistband.
 - E. Front short facing.
 - F. Back short facing.
2. Plain light weight cotton fabric 50cm long by 90cm wide.
3. Cotton sewing thread to match the fabrics.
4. One large envelope.

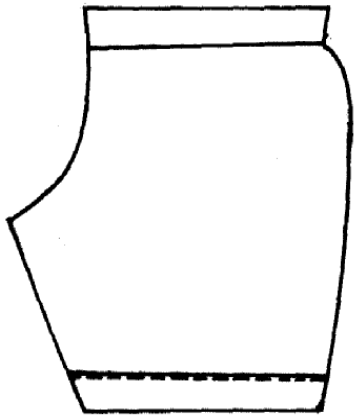
THE TEST.

Using the materials provided, cut out and make the LEFT LEG of the short to show the following processes.

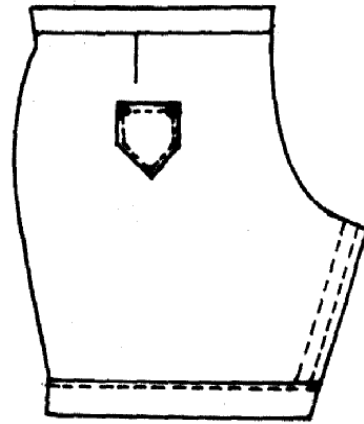
- a) Making of the back dart.
- b) Preparing and attaching the pocket.
- c) Working of the inner leg seam using machine fell seam.
- d) Working of the side seam using an open seam.
- e) Preparing the facing and attaching them onto the lower edge of the shorts.
- f) Fixing the facing using machine stitching.
- g) Preparing and attaching the waistband.
- h) Finishing the waistband using hamming stitches.

At the end of the examination firmly show on your work on a single fabric, a label bearing your name and index number. Remove the needles and pins from your work then fold your work neatly and place it in the envelope provided. Do not put scraps of fabric in the envelope.

VIEW OF A PAIR OF SHORTS

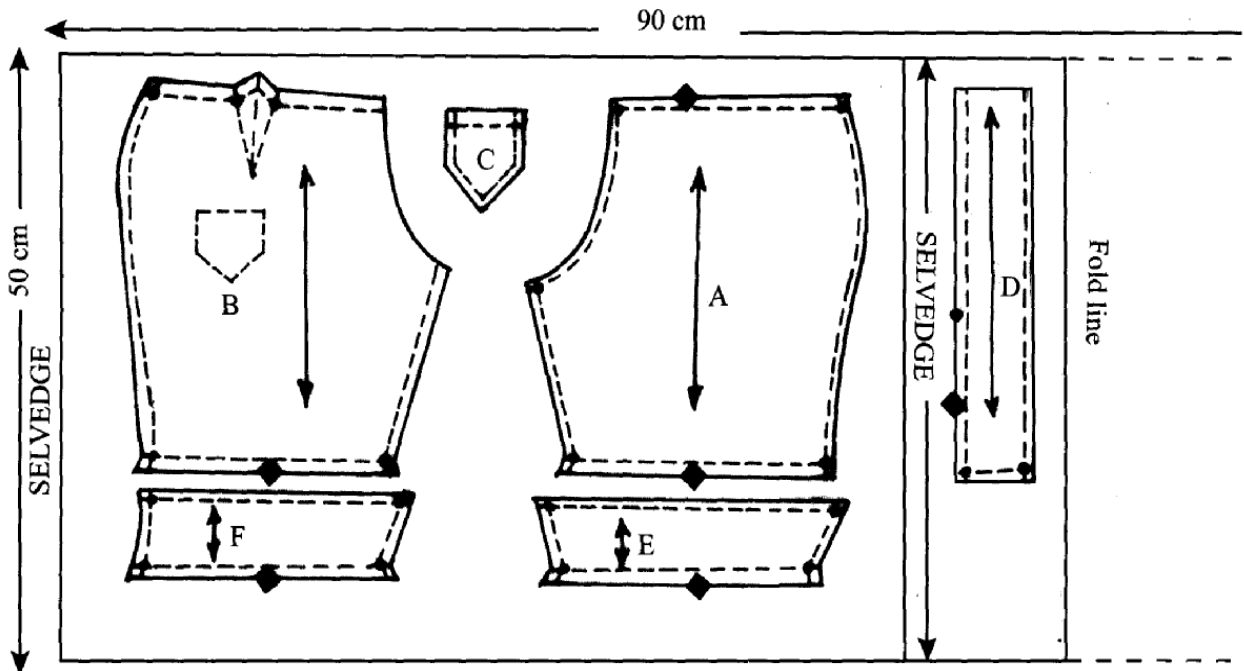


FRONT



BACK

LAYOUT (NOT DRAWN TO SCALE)



ANSWERS:

Order a copy of answers from www.schoolsnetkenya.com/order-e-copy

NB> We charge Kshs. 100 ONLY to meet website, e-resource compilation and provision costs