

Name:..... AdmNo:...../Ind.No:.....

231/3

Class:.....

**BIOLOGY****Paper 3****(PRACTICAL)****August 2014****1 ¾ hours.****MANGU HIGH SCHOOL****Kenya Certificate of Secondary Education****MOCK EXAMINATION****Instructions to candidates.**

- (a) Write your name, admission number and index number in the spaces provided above.
- (b) Answer **all** the questions in the spaces provided.
- (c) You are required to spend the first 15 minutes of the 1 ¾ hours allowed for this paper reading the whole paper carefully before commencing your work.
- (d) Additional pages must **not** be inserted.
- (e) This paper consists of **6** printed pages.
- (f) Candidates should check the question paper to ascertain that all the pages are printed as indicated and that no questions are missing.

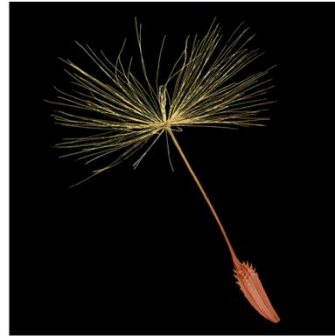
**For Examiner's use only**

<b>Question</b>	<b>Maximum Score</b>	<b>Candidate's Score</b>
<b>1</b>	<b>14</b>	
<b>2</b>	<b>11</b>	
<b>3</b>	<b>15</b>	
<b>Total Score</b>	<b>40</b>	

1. Photographs N, Q, U, V and X are specimens from different plants.



Photograph N



Photograph Q



Photograph U



Photograph V



Photograph X

a) State one structural similarity and one structural difference between the specimens in photographs V and X.

i) Similarity. (1 mark)

.....

ii) Difference. (2 marks)

.....

.....

b) In the table below, name the mode of dispersal and one adaptive feature. (8 marks)

Specimen in photograph	Mode of dispersal	Adaptive feature
<b>N</b>		
<b>Q</b>		
<b>U</b>		
<b>X</b>		

c) Draw and fully label the specimen in photograph Q. (3 marks)

2. You are provided with a sample of food labelled **B** in solution form, solution **C** (Benedict's solution), solution **D** (Dilute hydrochloric acid), solution **E** (Sodium hydrogen carbonate solution),

solution **F** (Copper (II) sulphate solution), solution **G** (sodium hydroxide solution) and solution **H** (Dichlorophenolindophenol).

a) Use the reagents provided, carry out tests on the food sample to identify the food substances present. Record the test, procedure, observation and conclusion in the table below. (10 marks)

Test	Procedure	Observation	Conclusion

b) State the role of hydrochloric acid in the procedures of one of the tests above. (1 mark)

.....

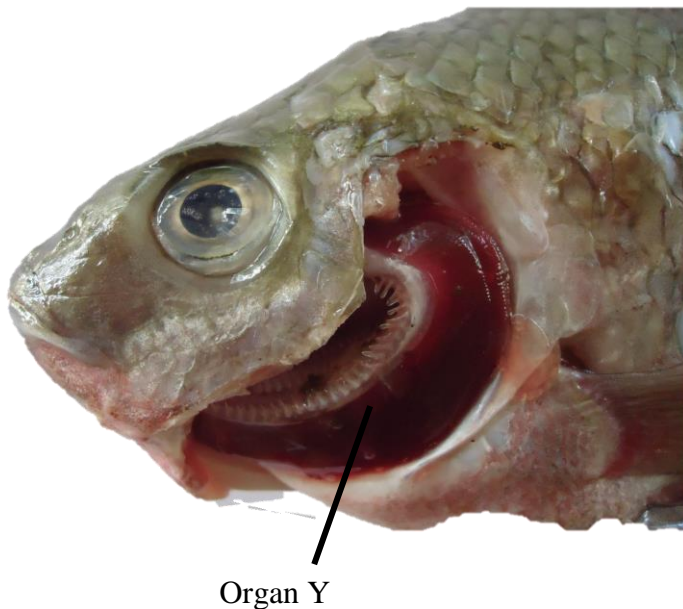
3. Below is a photograph of a certain animal. Examine it and answer the questions that follow.



a) Giving one observable feature in each case, classify the animal into the taxonomic units in the table below. (4 marks)

Taxonomic unit	Name of taxonomic unit	Feature
Phylum		
Class		

b) The photograph below shows the organ **Y**, visible after removal of a certain part.



i) Name the part of the animal that has been removed. (1 mark)

.....

ii) Describe three features of the organ **Y** that adapt it to its function. (3 marks)



**ANSWERS:**

Order a copy of answers from [www.schoolsnetkenya.com/order-e-copy](http://www.schoolsnetkenya.com/order-e-copy)

NB> We charge Kshs. 100 ONLY to meet website, e-resource compilation and provision costs