

Name..... Index No.....
 School..... Candidates Signature.....
 Date:

443 / 2
 AGRICULTURE
 Paper 2
 July / August 2011
 Time: 2Hours

MUTOMO / IKUTHA DISTRICTS K.C.S.E PACESETTER 2011
Kenya Certificate of Secondary Education (K.C.S.E)

AGRICULTURE
 Paper 2
 July / August 2011
 Time: 2Hours

INSTRUCTIONS TO CANDIDATES.

- Write your name & Index Number in the spaces provided.
- Sign and write the date of Examination in the spaces provided above
- This paper consists of three sections **A,B** and **C**
- Answer **ALL** the questions I Section **A** and **B**
- Answer **two** questions from Section **C**.

FOR EXAMINER'S USE ONLY

SECTION	QUESTION	MAXIMUM SCORE	CANDIDATES SCORE
A	1 – 17	30	
B	18 – 21	20	
C		20	
		20	
TOTAL SCORE		90	

*This paper consists of 8 printed pages.
 Candidates should check to ensure that all pages are printed as indicated and no questions are missing*

SECTION A

Answer all questions in this section in the spaces provided.

1. Give **four** cultural uses of livestock. (2Marks)

.....
.....
.....
.....

2. State **four** advantages of zero grazing. (2 Marks)

.....
.....
.....
.....

3. Outline **six** importance's of fences in a farm. (3 Marks)

.....
.....
.....
.....
.....
.....

4. State **four** functions of lubrication system in a tractor. (2 Marks)

.....
.....
.....
.....
.....

5. Name **two** categories of additives in livestock nutrition. (1 Mark)

.....
.....

6. Give **four** methods of stocking a beehive. (2 Marks)

.....
.....
.....

.....
.....
7. Give **four** reasons for maintenance of farm tools and equipment. (2 Marks)

.....
.....
.....
.....

8. Give **four** reasons for treating timber. (2 Marks)

.....
.....
.....

9. Give **four** advantages of four-stroke cycle engine over two-stroke cycle engine. (2 Marks)

.....
.....
.....
.....

10. Name the intermediate host for liverfluke. (1 Mark)

.....
.....

11. Name **two** categories of parasites in livestock. (1 Mark)

.....
.....

12. State **two** methods of lambing in sheep management. (1 Mark)

.....
.....

13. State **four** features of clean milk production. (2 Marks)

.....
.....
.....
.....
.....

14. What is caponisation? (1 Mark)

.....
.....

15. Give **four** factors considered when selecting eggs for marketing. (2 Marks)

.....
.....
.....
.....

16. Outline **four** predisposing factors to diseases. (2 Marks)

.....
.....
.....
.....

17. Give **four** effects of parasites on their hosts. (2 Marks)

.....
.....
.....
.....

SECTION B.

Answer all questions in this section in the spaces provided

18. a) Define the term digestibility. (1 Mark)

.....
.....

b) Using the Pearson's square method compute a 1000kg ration with 20% DCP from maize containing 10% DCP and cotton seedcake containing 45% DCP. (Show your working). (5 Marks)

19. Study the illustration below carefully and answer the questions that follow.

a) Name the type of beehive shown above. (1 Mark)

.....
.....

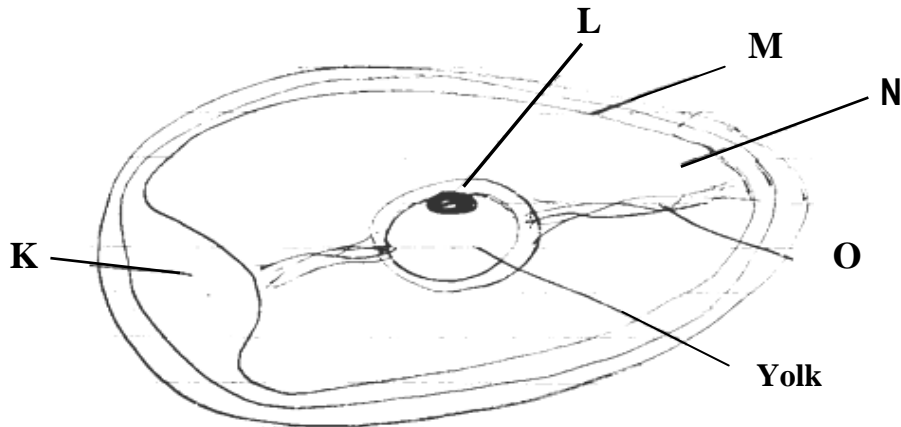
b) Give names of other **two** types of beehives. (2 Marks)

.....

c) Name the parts labeled A, B, C and D. (4 Marks)

- A
- B
- C
- D

20. Study the diagram of an egg shown and answer the questions that follow.



a) Name the parts labelled L, M and N. (3 Marks)

- L.....
- M.....
- N.....

b) State the function of the parts labelled O and K. (2 Marks)

- O
- K.

c) Give **two** reasons for egg candling. (2 Marks)

.....

ANSWERS:

Order a copy of answers from www.schoolsnetkenya.com/order-e-copy

NB> We charge Kshs. 100 ONLY to meet website, e-resource compilation and provision costs