

Name \_\_\_\_\_ Index No. \_\_\_\_\_

\_\_\_\_\_

Candidate's

signature \_\_\_\_\_

Date

443/2  
AGRICULTURE  
PAPER 2  
JULY/AUGUST 2014  
2 HOURS

MAKUENI DISTRICT JOINT FORM 4 EXAMINATION 2014  
Kenya Certificate of Secondary Education  
AGRICULTURE  
PAPER 2  
2 HOURS

#### INSTRUCTIONS TO CANDIDATES

1. Write your name and index number in the spaces provided
2. This paper consists of three sections: A, B and C
3. Answer **ALL** the questions in section A and B and any other **TWO** in section C
4. All answers must be written in the spaces provided

#### For examiner's use only

Section	Questions	Maximum score	Candidates score
A	1 – 18	30	
B	19 - 22	20	
C	23 - 25	40	
Total score		90	

*This paper consists of 12 printed pages*

*Turn Over*

**SECTION A (30 MARKS)**

*Answer all questions in the spaces provided*

1. Name three parts of the auger bit  
(mks)

(1 ½

---

---

---

---

---

---

---

---

2. State four factors that determine the strength of concrete in building and construction  
(2mks)

---

---

---

---

---

---

---

---

3. Give four factors that should be considered when siting a communal dip  
(2mks)

---

---

---

---

---

---

---

---

---

---

4. Name four routes of drug administration in livestock  
(2mks)

---

---

---

---

---

---

---

---

5. What is a zoonotic disease  
(1mk)

---

---

---

---

---

---

6. Name the two categories of ticks  
(1mk)

---

---

---

---

7. State four effects of protein deficiency in livestock  
(2mks)

---

---

---

---

---

---

---

---

---

---

8. State four factors which would determine the amount of concentrates an animal can take  
(2mks)

---

---

---

---

---

---

---

---

---

---

9. Differentiate between prepotency and heritability in selection and breeding in livestock  
(2mks)

---

---



12. Differentiate between a steer and a capon in livestock breeds  
(1mk)

---

---

---

---

---

13. State four factors that affect the digestibility of feeds in livestock  
(2mks)

---

---

---

---

---

---

---

---

14. What is the role of the following parts in the electrical system of a tractor  
(2mks)

(a) Distributor

---

---

---

---

---

(b) Starter motor

---

---

---

---

---

15. State four characteristics of clean milk production  
(2mks)

---

---

---

---

---

---

---

---

---

---

16. Differentiate between raddling and ringing in livestock  
(1mk)

---

---

---

---

---

---

---

---

17. Give the use of the following parts of ox-drawn plough  
(2mks)

(a) Frog

---

---

---

---

---

---

---

---

(b) Draft rod

18. What is the use of the following tools in the farm  
(1mk)

(a) Centre punch

---

---

---

---

---

(b) Steel float

---

---

---

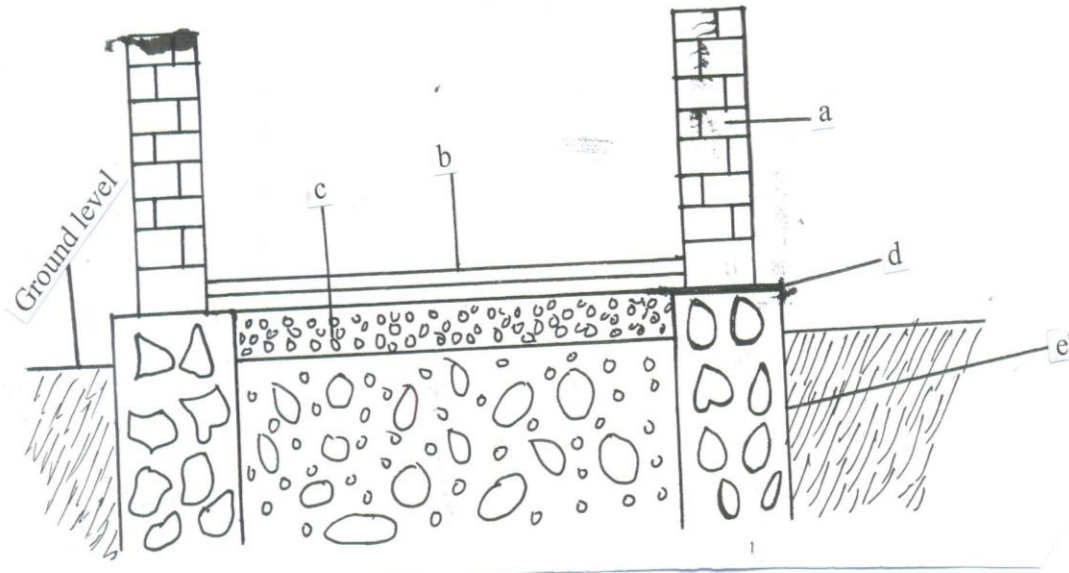
---

---

**SECTION B (20 MARKS)**

*Answer all the questions in the spaces provided*

19. Study the diagram below and answer the questions that follow



(a) Name the parts a – d

(2mks)

A \_\_\_\_\_

B \_\_\_\_\_

C \_\_\_\_\_

D \_\_\_\_\_

(b) What is the recommended ratio of cement, sand and ballast for part C

(1mk)

---



---



---



---



---

(c) What is the importance of the part labeled d

(1mk)

---



---

---

---

---

(d) State four ways in which a wire fence can be tightened  
(2mks)

---

---

---

---

---

---

---

---

---

---

20. State the use of the following parts of the fuel system of a tractor  
(2mks)

(i) Fuel tank

---

---

---

(ii) Delivery pipes

---

---

---

(iii) Fuel pump

---

---

---

(iv) Carburetor

---

---

---

---

(b) Outline the advantages of the fold system of rearing birds  
(2mks)

---

---

---

---

---

---

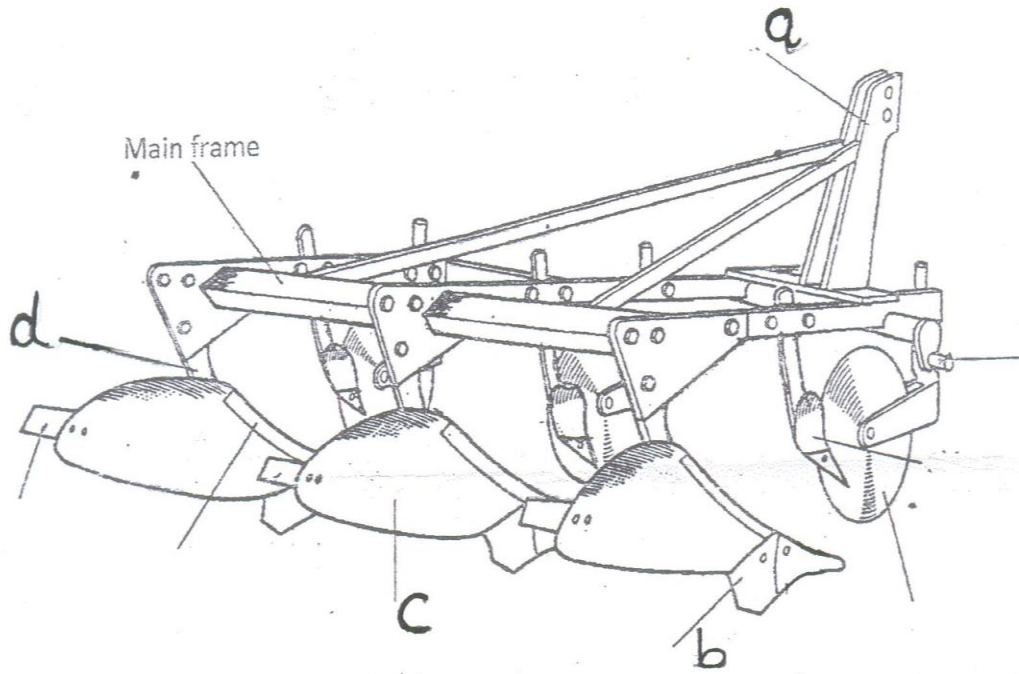
---

---

---

---

21. Study the diagram below and answer the questions that follow



(a) Identify the implement  
(1mk)

---



---



---

(b) Label parts a – d  
(2mks)

- A \_\_\_\_\_
- B \_\_\_\_\_
- C \_\_\_\_\_
- D \_\_\_\_\_

(c) Give four maintenance practices that a farmer should carry out on the above implement (2mks)

---



---



---



---

---

---

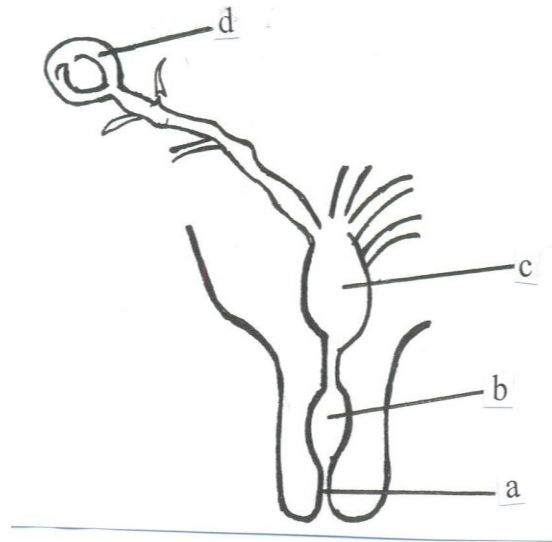
---

---

---

---

22. The diagram below shows the structure of the udder. Study it and answer the questions that follow



(a) Name the parts a, b, c and d

(2mks)

A \_\_\_\_\_

B \_\_\_\_\_

C \_\_\_\_\_

D \_\_\_\_\_

(b) Give the role of part c and d in the diagram

(2mks)

B

---

---

---

C

---

---

---

(c) (i) Name the hormone that initiates milk secretion  
( ½ mk)

---

---

---

(ii) How long does this hormone last in the blood of the animal  
( ½ mk)

---

---

---

**SECTION C (40 MARKS)**

*Answer any two questions in this section*

23. (a) Explain the process of water cooling system in a tractor  
(4mks)  
(b) Outline the differences between 4 – stroke cycle engine and 2-stroke cycle engine  
(10mks)

- (c) Discuss six factors that determine the choice of pipes for water conveyance for irrigation  
(6mks)
24. (a) Outline the pre-disposing factors of mastitis in lactating cows  
(5mks)  
(b) Discuss the life cycle of tape worms  
(10mks)  
(c) Discuss the uses of various equipment that are used in honey harvesting  
(5mks)
25. (a) Give ten routine practices and explain an appropriate method of handling livestock in each routine practices  
(10mks)  
(b) Discuss the management of one day old chick up to the 9<sup>th</sup> week  
(10mks)

**ANSWERS:**

Order a copy of answers from [www.schoolsnetkenya.com/order-e-copy](http://www.schoolsnetkenya.com/order-e-copy)

NB> We charge Kshs. 100 ONLY to meet website, e-resource compilation and provision costs