

NAME..... INDEX NO.....
 Candidates Signature.....
 Date.....

GATUNDU SUB COUNTY FORM FOUR 2014 EVALUATION EXAM

443/2
 AGRICULTURE
 PAPER II
 JULY/AUGUST 2014
 TIME: 2 HOURS

KENYA CERTIFICATE OF SECONDARY EDUCATION
 FORM FOUR EVALUATION EXAMINATION

INSTRUCTIONS TO CANDIDATES

1. The paper consists of 3 sections A, B & C.
2. Answer all the questions in section A & B.
3. Answer any two questions in section C in the spaces provided

FOR EXAMINER'S USE ONLY

| SECTION | QUESTIONS | MAXIMUM SCORE | CANDIDATES SCORE |
|-------------|-----------|---------------|------------------|
| A | | 30 | |
| B | | 20 | |
| C | | 20 | |
| | | 20 | |
| TOTAL SCORE | | 90 | |

SECTION A (30 Marks)

Answer all questions in this section in the spaces provided.

1. Name a livestock breed with a pendulous udder. (1 mark)

.....
.....

2. List down two plumbing tools. (1 mark)

.....
.....

3. Give four uses of lubrication system in a tractor. (2 marks)

.....
.....
.....
.....

4. Outline four maintenance practices carried out on the water cooling system of a tractor. (2 marks)

.....
.....
.....
.....

5. Name four operational advantages of disc plough over mould board plough. (2 marks)

.....
.....
.....
.....

6. Name four parts of a fish pond and state function of each. (2 marks)

.....
.....
.....
.....

7. Give four methods of controlling tse tse flies. (2 marks)

.....
.....

.....
.....
8. List two predisposing factors of foot rot in sheep. (1 mark)

.....
.....
9. Outline factors used by a farmer when selecting a dairy cow. (2 marks)

.....
.....
10. Give four features of a camel that enable it survive in dry areas. (2 marks)

.....
.....
11. State two uses of crop in poultry digestive system. (1 mark)

.....
.....
12. Outline four methods of dehorning in cattle. (2 marks)

.....
.....
13. Define the term cropping as used in fish management. (1 mark)

.....
.....
14. List six causes of stress in a flock of layers. (3 marks)

.....
.....
.....
.....

15. Name four roles of worker bees in a hive. (2 marks)

.....
.....
.....
.....

16. Outline four structural features of a calf pen. (2 marks)

.....
.....
.....
.....

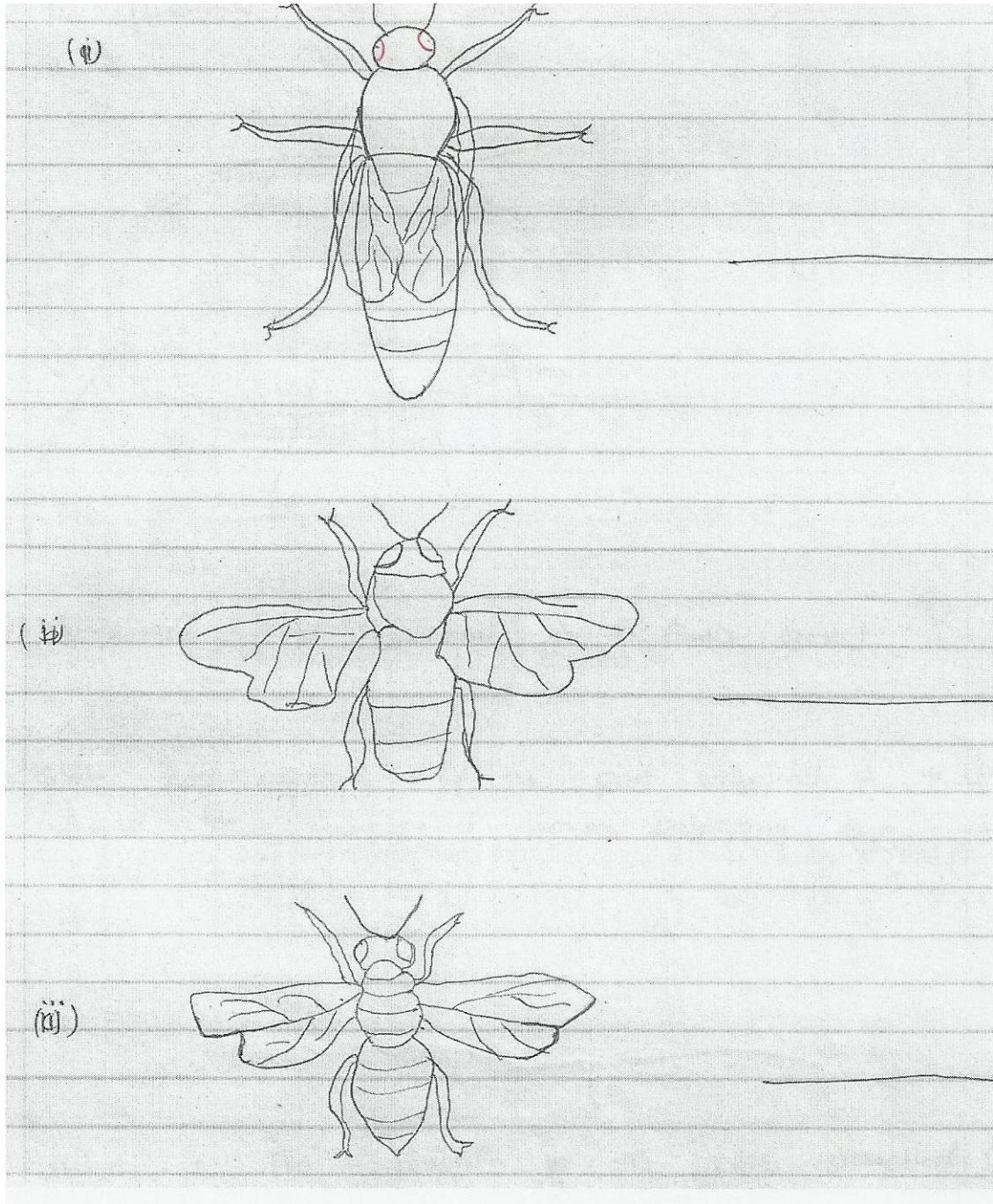
17. Name four routes through which pathogens can enter into an animal body. (2 marks)

.....
.....
.....
.....

SECTION B (20 Marks)

Answer all questions in the spaces provided.

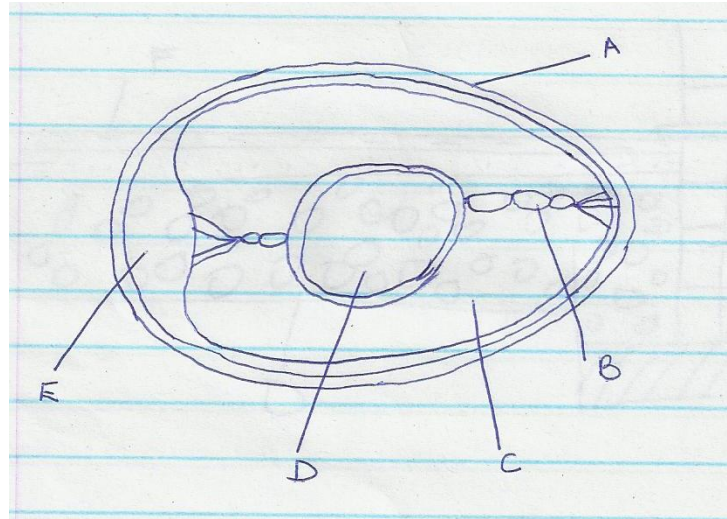
18. a) Identify the following types of bees. (3 marks)



b) Name two common diseases of bees. (2 marks)

.....
.....

19. The diagram below represents an egg. Study it and answer the questions that follow.



a) Name the part labeled A, B, C and D. (2 marks)

.....
.....

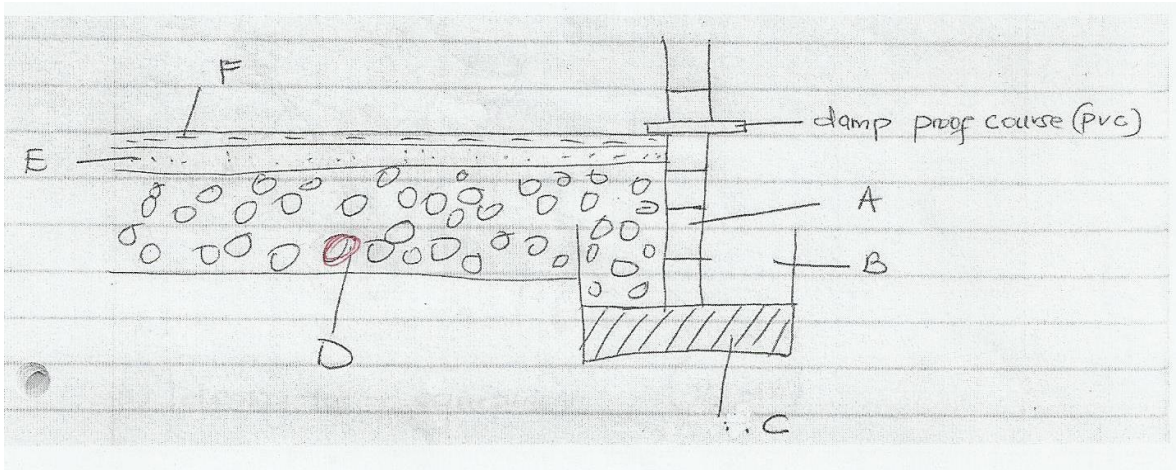
b) State two qualities of the part labeled A that should be considered when selecting eggs for incubation. (2 marks)

.....
.....

c) What is the function of the part labeled D in a fertilized egg? (1 mark)

.....
.....

20. Study the diagram below of a permanent foundation and answer the question that follow.



a) Name the following parts labeled A, B, C, D, E, and F. (3 marks)

.....

.....

.....

b) What is the mixing ratio used to make part F? (1 mark)

.....

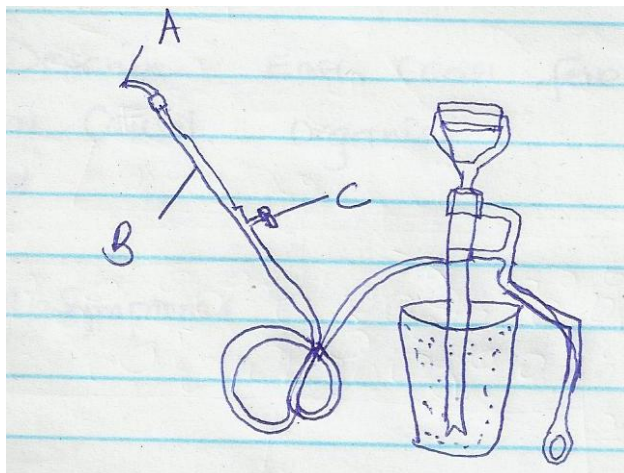
.....

c) State two uses of the damp proof course (PVC) (2 marks)

.....

.....

21. Below is a diagram of a farm equipment. Use it to answer the questions that follow.



a) Identify the equipment (½ mark)

.....
.....

b) State the use of the equipment. (1 mark)

.....
.....

c) Name the parts labeled A, B and C (1 ½ marks)

.....
.....
.....

d) Identify one draw back in using the above equipment as compared to others used for the same purpose. (1 mark)

.....
.....

SECTION C(40 Marks)

Answer any two questions from this section in the spaces provided.

22. (i) Describe East Coast Fever under the following: _

a) Causal organism (1 mark)

.....
.....

b) Symptoms (5 marks)

.....
.....
.....
.....
.....
.....

c) Animals attacked (1 mark)

.....
.....

d) Control (3 marks)

.....

.....

.....

.....

(ii) Describe the life cycle of a three-host tick. (10 marks)

.....

.....

.....

.....

.....

.....

.....

.....

23. a) Outline the procedure followed when hand spraying cattle to ensure effective use of acaricides to control ticks. (10 marks)

.....

.....

.....

.....

.....

.....

.....

.....

.....

.....

.....

.....

.....

b) Describe the digestion of grass in the rumen of a ruminant animal. (10 marks)

.....

.....

.....

.....

.....

.....

.....

.....

.....

.....

.....

.....

.....

.....

.....

24. a) (i) Describe five maintenance practices that should be carried out on an ox-drawn mould board plough. (5 marks)

.....

.....

.....

.....

.....

.....

.....

.....

.....

.....

(ii) Give five advantages of using a sub soiter in seedbed preparation. (5 marks)

.....

.....

.....

.....

.....

.....

.....

.....

.....

.....

b) Explain the uses of various hand tools in the construction a Kenya Top Bar Hive. (10 marks)

.....

.....

.....

.....

.....

.....

.....

.....

.....

.....

ANSWERS:

Order a copy of answers from www.schoolsnetkenya.com/order-e-copy

NB> We charge Kshs. 100 ONLY to meet website, e-resource compilation and provision costs