

KENYA NATIONAL EXAMINATION COUNCIL KCSE, 2014

HOME SCIENCE PAPER 2 ANALYSIS

Osiligi House, Opposite KCB, Ground Floor
Off Magadi Road, Ongata Rongai | Tel: 0711 88 22 27
E-mail: infosnkenya@gmail.com | Website: www.schoolsnetkenya.com

3.7.3 Home Science Paper 2 (441/2) Clothing Construction

This is a practical paper conducted within the examination period where candidates are required to demonstrate their competence in clothing construction by making a sample of a garment as per the instructions. Patterns, sketches and a layout are provided for them to use in the examination.

GIRL'S SKIRT

A pattern of a girl's skirt is provided. You are advised to study the sketches, instructions and layout carefully before you begin the test.

MATERIALS PROVIDED

- 1 Pattern Pieces
 - A – Skirt back
 - B – Yoke (front)
 - C – Lower skirt (front)
 - D – Front waistband
 - E – Back waistband
 - F – Frill
- 2 Plain lightweight cotton fabric 56 cm long by 90 cm wide.
- 3 Sewing thread to match the fabric.
- 4 One large envelope.

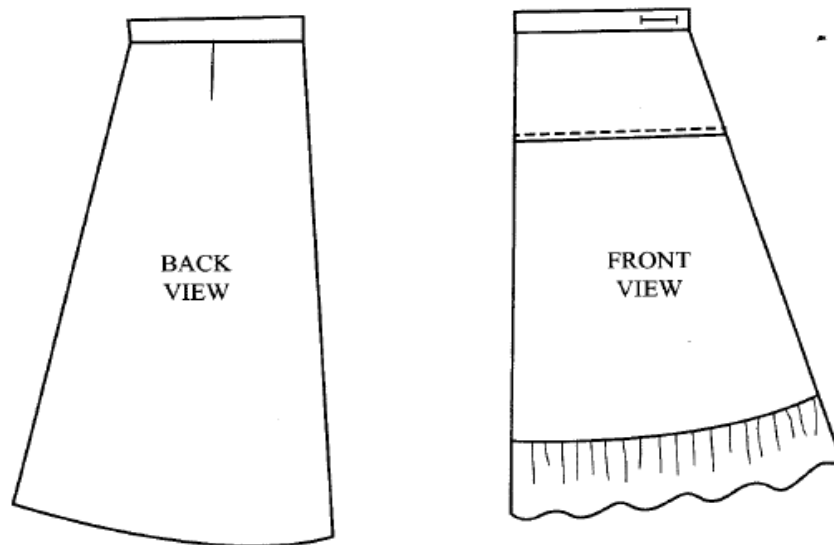
THE TEST

Using the materials provided, cut out and make the **left half** of the girl's skirt to show the following processes:

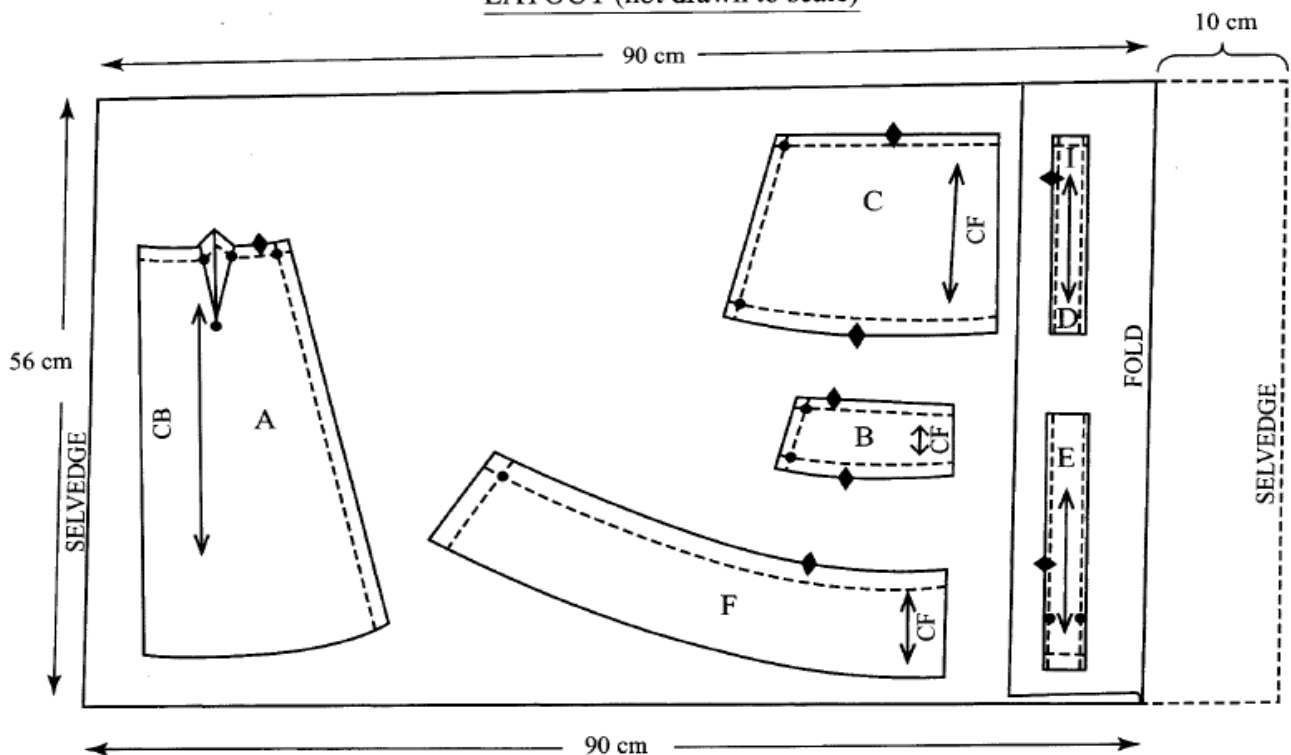
- (a) Cutting out. (14 marks)
- (b) Making of the dart at the back skirt. ($6\frac{1}{2}$ marks)
- (c) Joining of the yoke front to the lower skirt front using an overlaid seam. **Do not trim. Neaten half the seam using loop stitches.** (12 marks)
- (d) Attaching of the frill to the lower skirt front using a plain seam. **Leave the gathering stitches and do not trim the seam allowance.** (11 marks)
- (e) Making of the skirt side seam from the yoke to the hemline using an open seam. (7 marks)
- (f) Attaching of the front and back waistbands and holding them in place using tacking stitches. (21 marks)
- (g) Making of the worked buttonhole. (12 marks)
- (h) **OMIT**
The management of the skirt hem.
- (i) Overall presentation. ($6\frac{1}{2}$ marks)

At the end of the examination, firmly sew onto your work, on a single fabric, a label bearing your name and index number. Remove the needle, pins and loose threads from your work. Fold your work neatly and place it in the envelope provided. **Do not put scraps of fabric in the envelope. Do not seal the envelope.**

SKIRT VIEWS



LAYOUT (not drawn to scale)



Weaknesses

- Most candidates utilize their time poorly and therefore do not finish the tasks on the tests and end up scoring poorly.
- Some candidates did not sew on labels as required. They wrote their names on the garment.
- It is evident that some candidates are not able to achieve correct graining when cutting out the fabric.
- Some candidates neaten the overlaid seam with overcasting stitches instead of loop stitches.
- The quality of buttonhole stitches was poor. Some candidates were sewing the buttonhole stitches on a single material.

Advice to teachers

More practice in clothing construction processes should be encouraged so that the learners acquire skills and confidence to perform tasks well.

The teachers and learners should develop a positive attitude towards the clothing and textiles topics and make it interesting.

Learners should be trained on managing their time when undertaking the test to avoid leaving so many tasks unfinished.

Advocate for adequate equipment and materials in the schools to ensure the learners have more practice and thus improve their competences in clothing construction.