

KENYA NATIONAL EXAMINATION COUNCIL KCSE, 2014

DRAWING AND DESIGN PAPER 1 ANALYSIS

Osiligi House, Opposite KCB, Ground Floor
Off Magadi Road, Ongata Rongai | Tel: 0711 88 22 27
E-mail: infosnkenya@gmail.com | Website: www.schoolsnetkenya.com

3.7 DRAWING AND DESIGN (449)

The drawing and Design examination for 2014 was tested in two papers; paper 1(449/1) and paper 2 (449/2). Paper 1 was a theory paper which constituted 60% of the final mark while Paper 2 was a practical paper which constituted 40% of the final mark. Both papers followed the usual setting format as those of the previous years.

CANDIDATES' OVERALL PERFORMANCE

Table 15: Candidates overall performance in the years 2009 to 2014

Year	Paper	Candidature	Max. Score	Mean Score	Standard Deviation
2009	1		60	26.31	13.12
	2		40	20.44	7.53
	Overall	313	100	46.75	18.49
2010	1		60	27.93	12.09
	2		40	22.22	6.49
	Overall	307	100	50.15	14.79
2011	1		60	31.52	10.17
	2	428	40	24.17	7.00
	Overall		100	55.68	15.21
2012	1		60	32.61	11.67
	2	420	40	24.17	7.00
	Overall		100	55.68	15.21
2013	1		60	28.94	11.60
	2	483	40	27.52	6.34
	Overall		100	56.45	16.39
2014	1		60	36.82	10.21
	2	473	40	30.13	5.61
	Overall		100	66.95	14.09

From the table above, the following observations can be made:

- (i) The candidature dropped from 483 in 2013 to 473 in 2014.
- (ii) The mean score improved from 56.45 to 66.95 while the standard deviation dropped from 16.39 to 14.09

Question 11

Figure 6 shows parts of a machine component drawn in first angle projection. Assemble the parts and draw **FULL SIZE** the following:

- sectional front elevation along the cutting plane P - P;
 - the plan;
- Hidden details are not required. Unspecified dimensions are left to the candidate's discretion. (20 marks)

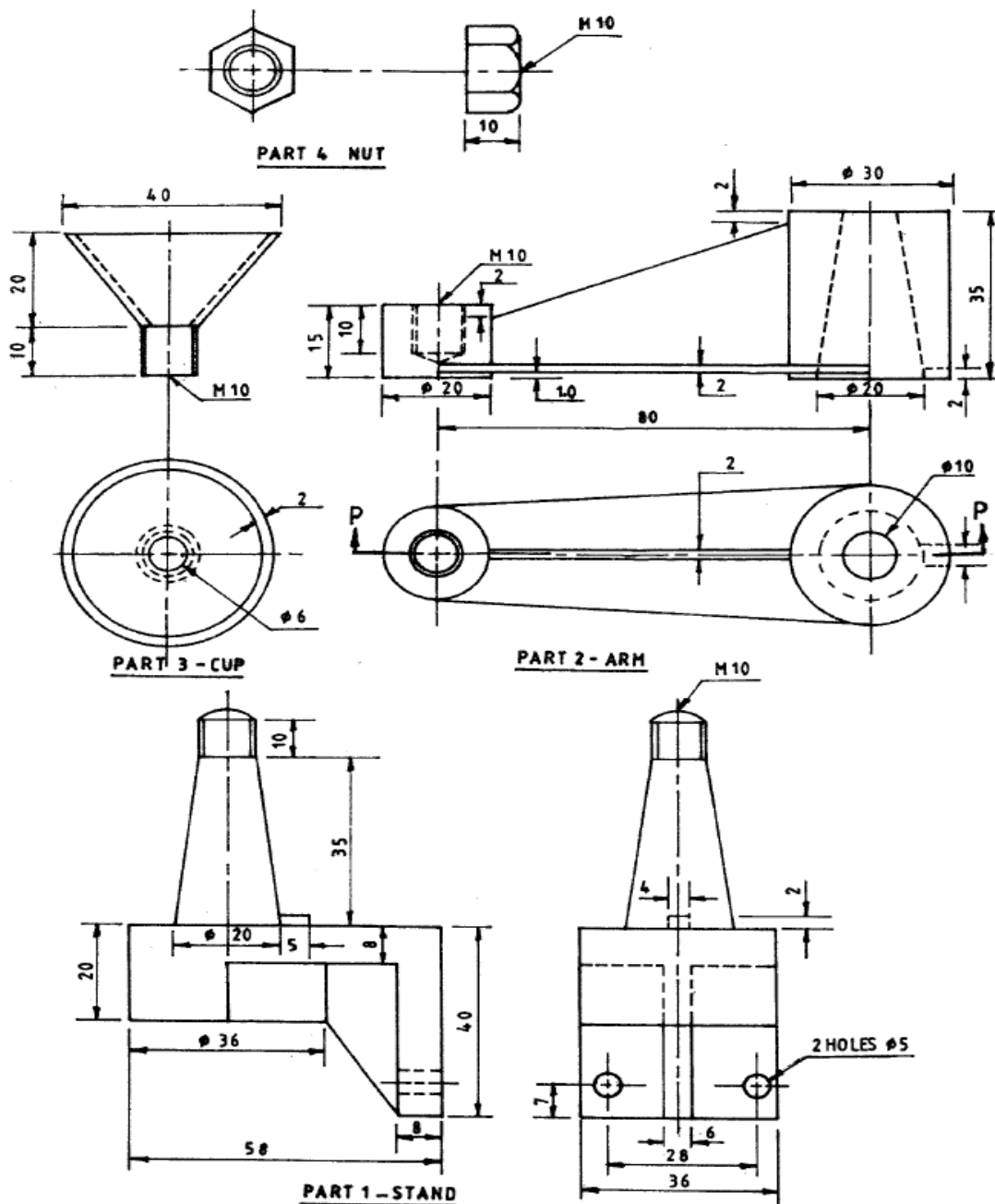


Fig. 6

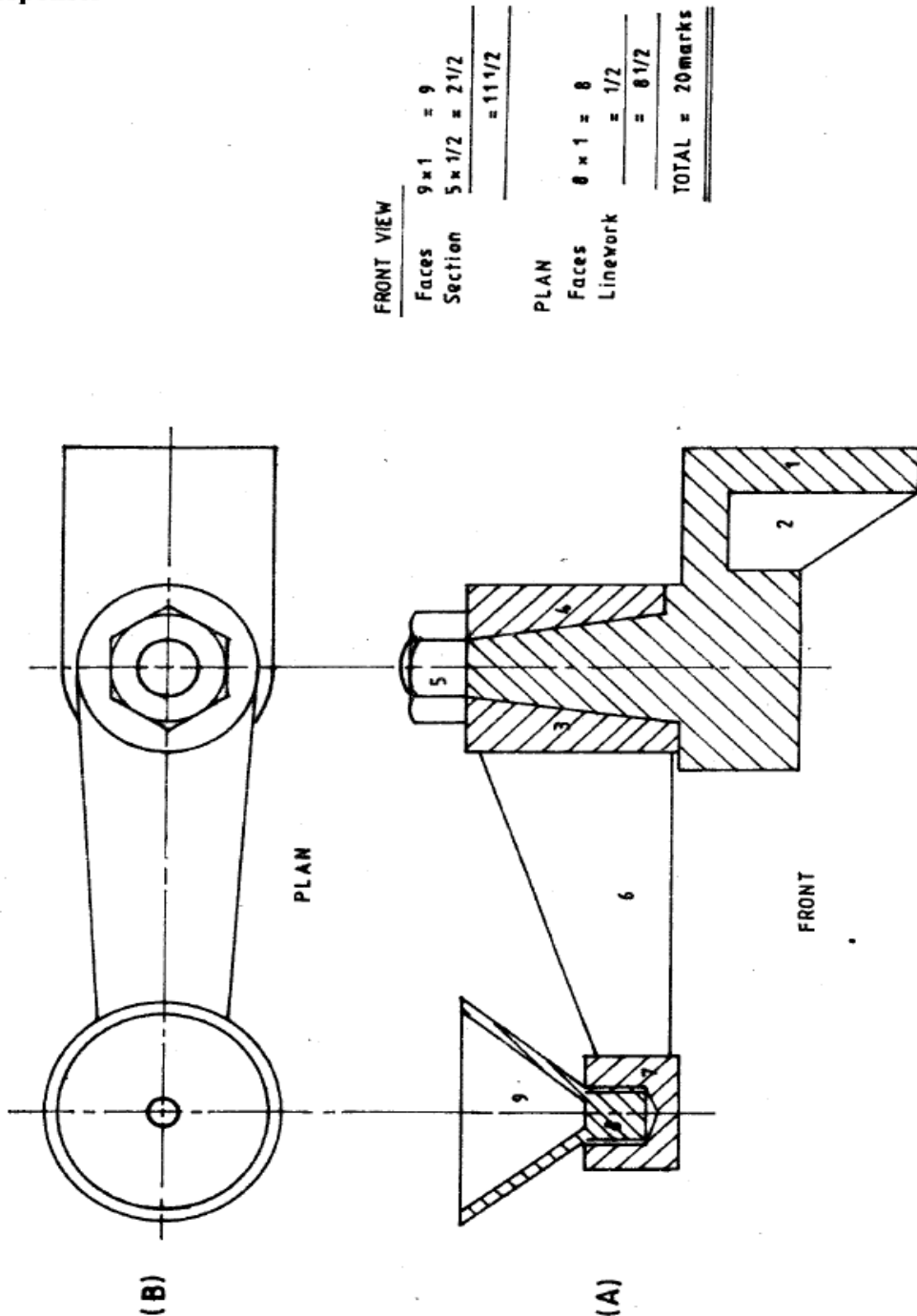
Weakness

A number of candidates were not able to assemble the parts and draw the views stated.

Advice to teachers

Teachers need to expose learner to a lot practice in assembly drawing by giving them assignments to do both in class and take away.

Expected responses



Question 13

Figure 8 shows the plan of an object. A string attached to its circumference is wound tight. Trace the path followed by a mark P on the string as it unwinds through one revolution.

(15 marks)

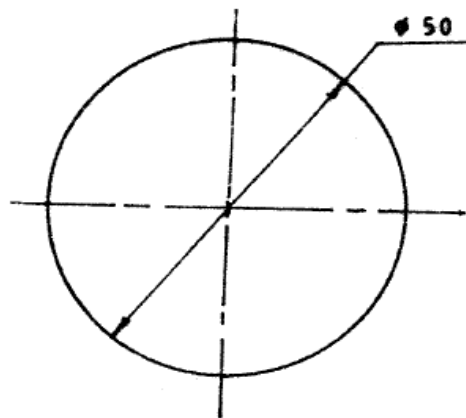


Fig 8

Weakness

Some candidates could not draw the involute as per the question..

Advice to teachers

Teachers are advised to give students more practice in drawing of standard loci and explain where such loci are applicable.

COPYING
DIVIDING CIRCUM
DRAWING TANGENTS
DETERMINING THE CIRCUM(D)
DIVIDING CIRCUM INTO 12
TRANSFERRING DISTANCE TO TANGENTS
CONNECTING THE POINTS (SMOOTH)
NEATNESS

= 1
= 3
= 2
= 3
=
=
=
= 15 marks