
KENYA NATIONAL EXAMINATION COUNCIL

KCSE 2007

HOME SCIENCE PAPER 2

Coordinated by KENPRO,
Macjo Arcade, 4th Floor, Suite 15E,
Off Magadi Road, Ongata Rongai | Tel: +254202319748 |
E-mail: infosnkenya@gmail.com | Website: www.schoolsnetkenya.com

23.12.2 Home Science Paper 2 (441/2)

441/2
HOME SCIENCE (CLOTHING CONSTRUCTION)
Paper 2
(PRACTICAL)
Oct./Nov. 2007
2¹/₂ hours

THE KENYA NATIONAL EXAMINATIONS COUNCIL
Kenya Certificate of Secondary Education
HOME SCIENCE (CLOTHING CONSTRUCTION)
Paper 2
(PRACTICAL)
2¹/₂ hours

This paper consists of 3 printed pages

Candidates should check the question paper to ascertain that both pages are printed as indicated and no questions are missing.

© 2007 The Kenya National Examinations Council

Turn over

A pattern of a child's dress is provided. You are advised to study the sketches, the question paper and the layout carefully before you begin the test.

MATERIAL PROVIDED

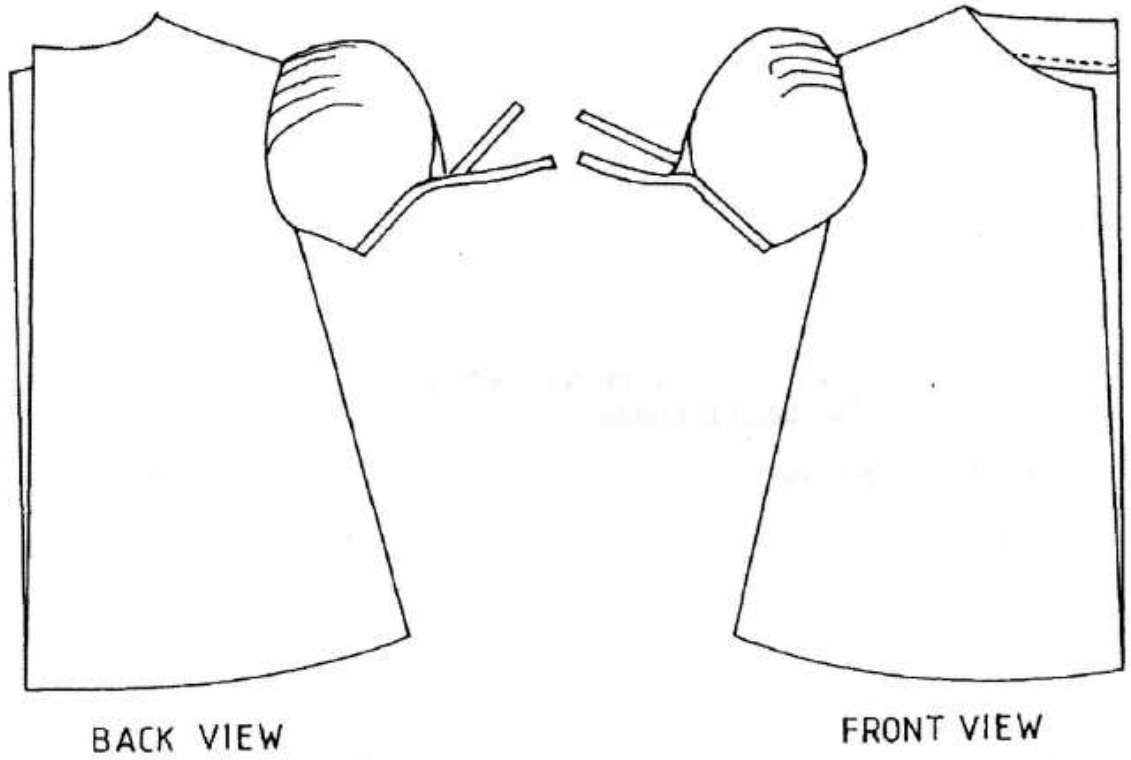
1. Pattern pieces
 - A. Dress front
 - B. Dress back
 - C. Sleeve
 - D. Sleeve binding and ties
 - E. Sleeve opening facing
 - F. Front neck facing
 - G. Back neck facing.
2. Plain light weight cotton fabric 70 cm long by 90 cm wide.
3. Sewing thread to match fabric.
4. One large envelope.

THE TEST

Using the materials provided, cut out and make up the **RIGHT HALF** of the child's dress to show the following:

- (a) The making of a French seam at the shoulder.
- (b) The joining of the side with a neatened open seam.
- (c) The preparation of a faced sleeve opening.
- (d) The joining of the underarm seam using a neatened open seam.
- (e) The binding of the lower edge of the sleeve and preparation of the tie ends.
- (f) The preparation and attachment of the sleeve.
N.B: Do not trim or neaten the armhole seam allowance.
- (g) The preparation and attachment of neck facings.

At the end of the examination, firmly sew on to your work, on a single fabric a label bearing your name and index number. Remove the needles and pins from your work, then fold your work carefully and place it in the envelope provided. **Do not** put scraps of fabric in the envelope.



THE LAYOUT (NOT DRAWN TO SCALE)

