



RIISING STAR EXAMINATION SERIES
STANDARD SIX
YEAR 2021

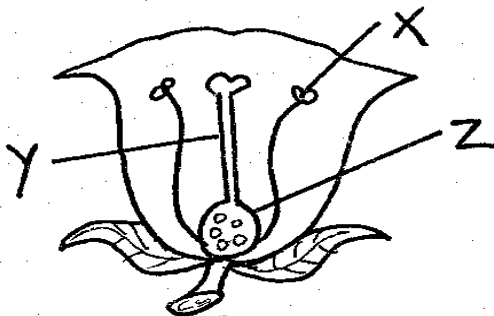
SCIENCE

Time: 1hr 40min

HOW TO USE THE ANSWER SHEET

1. Use only an ordinary pencil.
2. Make sure that you have written on the answer sheet:-
(i) *Your Name* (ii) *Name of your School*
3. For each question, show the correct answer by drawing a line in the brackets in which the letter you have chosen is written.

1. Which one of the following is a function of the urethra?
A. To store sperms
B. To take sperms to the sperm duct
C. To release sperms to the outside
D. To produce sperms
2. The amount of medicine to be taken at one time is known as:-
A. medicinal quality B. dosage
C. prescription D. first aid
3. Which one of the following is a bulb vegetable?
A. Spinach B. Onion
C. Tomato D. Carrot
4. At what age is the third dose of DPT vaccine given?
A. 3 months B. 14 weeks
C. 10 weeks D. 6 weeks
5. Name the part X, Y and Z in the diagram below.



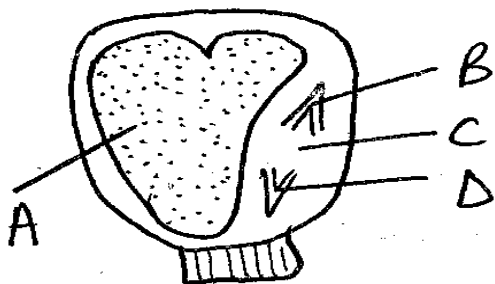
- | | | |
|-----------|-------|-------|
| X | Y | Z |
| A. Anther | style | ovary |
| B. Stigma | style | ovary |
| C. Stigma | style | ovule |
| D. Flower | style | ovule |

6. Which one of the following is **NOT** a factor to consider when classifying clouds?
A. Mass B. Shape
C. Appearance D. Height
7. Which of the following is **NOT** an amphibian?
A. Newt B. Toad
C. Salamander D. Chameleon
8. Which of the following shows industrial use of water?
A. Boat racing
B. Making a fountain
C. Swimming
D. Cooking
9. Ouma assembled the following materials during a Science lesson.

(i) *Three transparent bottles of the same size*
(ii) *Three funnels*
(iii) *Cotton wool*
(iv) *Water*
(v) *Equal amounts of dry sandy, clay and loam soil*
(vi) *Three similar scales made from strips of manilla paper*

- Identify the property of soil Ouma wanted to investigate.
- A. Capillarity
 - B. Water retention
 - C. Drainage
 - D. Texture

10. The diagram below shows a monocot seed



Which of the parts labelled A, B, C and D indicates the endosperm?

- A. C B. D C. B D. A

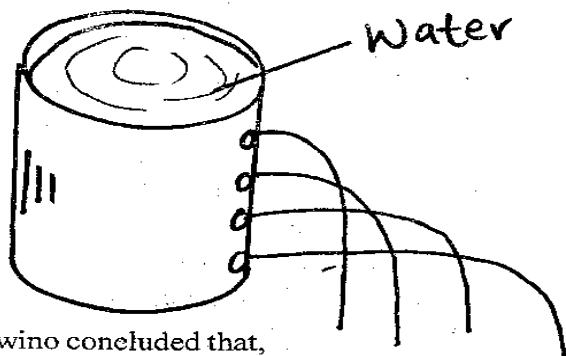
11. Which one of the following is a source of animal fat?

- A. Margarine B. Cooking oil
C. Soya beans D. Butter

12. The cheapest source of heat is the:-

- A. sun B. firewood
C. charcoal D. gas

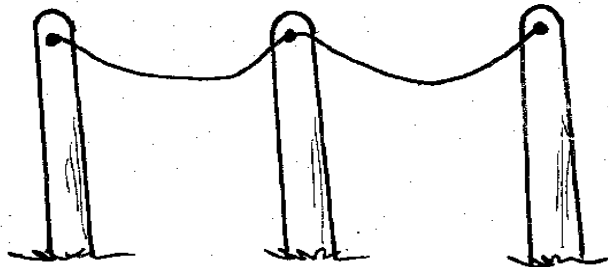
13. Awino poured water in a tin below.



Awino concluded that,

- A. pressure in liquids decreases with depth
B. pressure in liquids increases with depth
C. pressure in liquids increases with height
D. pressure in liquids is higher at the top

14. On his way home one hot afternoon, Cheko saw telephone wires sagging as shown below.



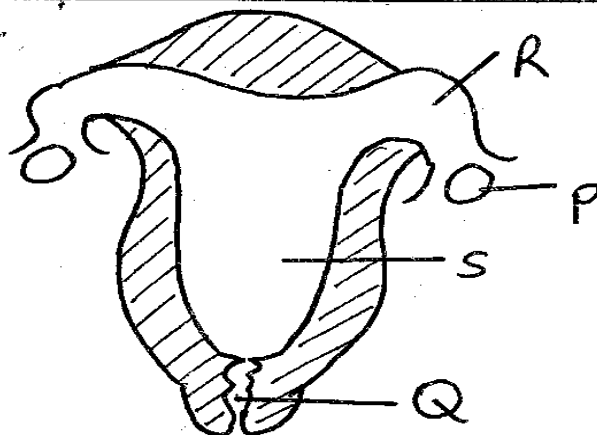
What conclusion did Cheko make?

- A. Metals are good conductors of heat
B. Solids are the best transmitters of sound
C. The wires are old and needed replacement
D. Metals expand when heated

15. Oiling tools prevents them from:-

- A. becoming blunt B. decaying
C. rusting D. drying

Use the diagram below to answer questions 16.



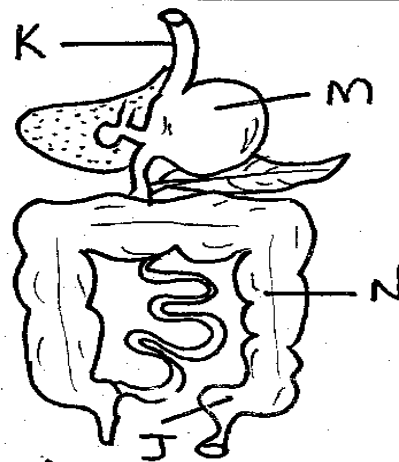
16. Which of the following is the correct name for the parts P, R, S and Q respectively?

- A. Ovary, oviduct, uterus, vagina
B. Ovary, uterus, vagina, oviduct
C. Oviduct, uterus, ovary, vagina
D. Oviduct, vagina, uterus, ovary

17. The following are immunizable diseases EXCEPT:-

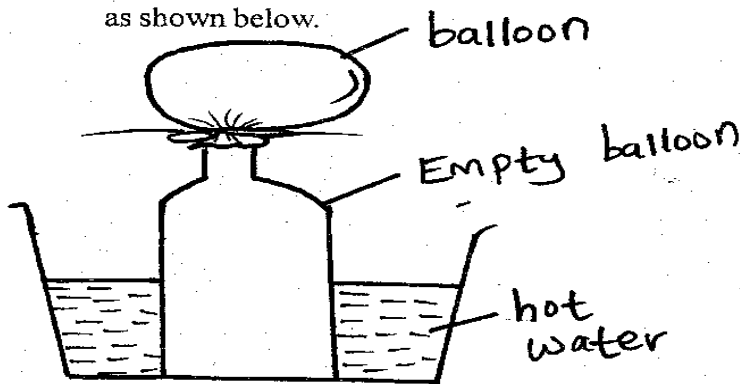
- A. measles B. cholera
C. diptheria D. pneumonia

Use the diagram below to answer questions 18-21.



18. Which part is the gullet?
A. N B. M C. L D. K
19. Digestion ends in the part
A. M B. J C. N D. K
20. Hydrochloric acid mixes with food in the part marked:-
A. M B. N
C. L D. J
21. The part known as rectum is marked:-
A. J B. K C. L D. M
22. Which one is a reptile?
A. Frog B. Lizard
C. Rat D. Snail
23. Which of the following is a common characteristics to both fish and reptiles?
A. They lay eggs
B. They are warm blooded
C. They take care of their young ones
D. They live partly on land and partly in water

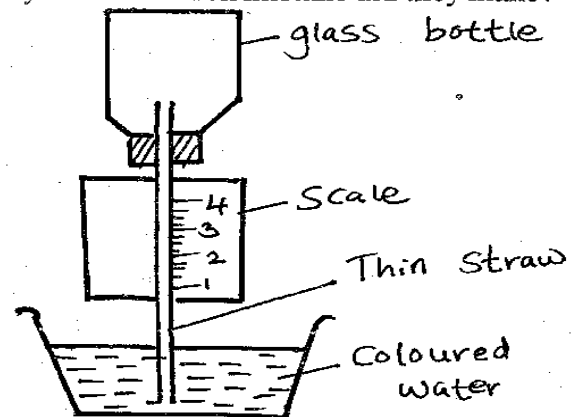
24. Pupils from Zion primary school set an experiment as shown below.



What were they investigating?

- A. Gases expand when heated
B. Bubbles are formed in water
C. Candles can burn the bottle
D. Solids expands on heating
25. A _____ is a piece of metal that has known heaviness.
A. a seesaw
B. a log of wood
C. a standard weight
D. a weighing balance

26. Dental caries is another name for:-
A. cavities B. bleeding gums
C. plaque D. tooth decay
27. How many types of teeth are there in an adult mouth?
A. 32 B. 20 C. 3 D. 4
28. Which of the following is a stem tuber?
A. Irish potato B. Carrot
C. Onion D. Arrow root
29. The exchange of gases during breathing process takes place in the:-
A. bronchioles B. air sacs
C. Trachea D. Bronchi
30. The experiment below was set by pupils from Mzima primary school. Which mistake did they make?

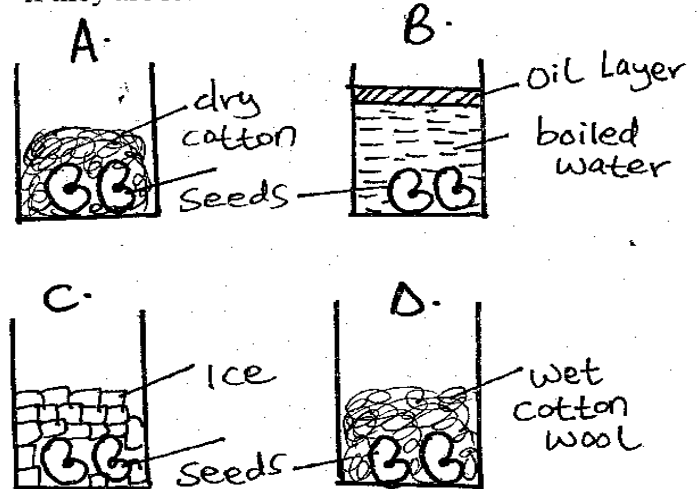


- A. using a glass bottle instead of a plastic bottle
B. using little amount of coloured water
C. labelling the scale wrongly
D. using the inner tube of a ball point pen instead of a straw
31. Which one of the following is NOT a physical change in boys?
A. Growth of hair under the armpit
B. Broadening of hips
C. Deepening of voice
D. Broadening of shoulders and chest
32. Akinyi gave birth on 6th February 2003. Which month of the same year was she likely to take the baby for immunization against measles?
A. September B. March
C. October D. November

33. Which of the following planet is seen in the West just after sunset?
 A. Venus B. Mercury
 C. Jupiter D. Mars
34. The _____ is found at the centre of the solar system.
 A. sun B. moon
 C. orbit D. Jupiter
35. Which one of the following seeds is a dicotyledon?
 A. Sorghum B. Groundnut
 C. Rice D. Wheat
36. Which one of the following is an important decision that can make a person go for a HIV test?
 A. When getting a new car
 B. If one wants to have a baby
 C. When buying a shamba
 D. When changing from one job to another
37. All the following are agents of pollination EXCEPT:-
 A. water B. flower
 C. birds D. wind
38. Which one of the following is NOT a characteristics of insect pollinated flowers?
 A. Sticky pollen grains
 B. Have nectar
 C. Brightly coloured petals
 D. Produce large amounts of pollen
39. A flower is a plant:-
 A. part for germination
 B. root system
 C. organ reproduction
 D. storage system
40. The fusion of male and female sex cells is called:-
 A. fertilization
 B. reproduction
 C. sex
 D. germination
41. Three of the following are ways through which diseases are transmitted from one person to another. Which one is NOT?
 A. Sharing food
 B. Water
 C. Contaminated food
 D. Air

42. Which of the following body fluids least contains HIV?
 A. Reproductive fluids
 B. Breast milk
 C. Saliva
 D. Blood

43. Which of the following containers will seed germinate if they are left for one week?



44. Sound travels poorest in:-
 A. solids B. liquids
 C. air D. vacuum
45. Parasites that causes malaria are called:-
 A. bacteria B. virus
 C. plasmodium D. mosquito
46. Corolla is a collection of:-
 A. sepals B. petals
 C. stamens D. anthers
47. The path each planet follows as it revolves round the sun is known as:-
 A. eclipse B. orbit
 C. rotation D. solar system
48. Ovulation in human beings takes _____
 A. 40 days B. 28 days
 C. 14 days D. 4 days
49. Heat travels fastest through:-
 A. solids B. gases
 C. water D. liquids
50. The chemicals produced in the bodies of adolescents which bring about mood swings are called:-
 A. antibiotics B. hormones
 C. gastric juice D. resins