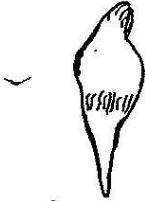


**HOW TO USE THE ANSWER SHEET**

- Use only an ordinary pencil.
- Make sure that you have written on the answer sheet:-  
(I) YOUR NAME (II) NAME OF YOUR SCHOOL.
- For each question, show the correct answer by drawing a line in the brackets in which the letter you have chosen is written.

1. The following diagram shows a type of human tooth. Its function is:-



- A. cutting
- B. biting
- C. gripping
- D. crushing

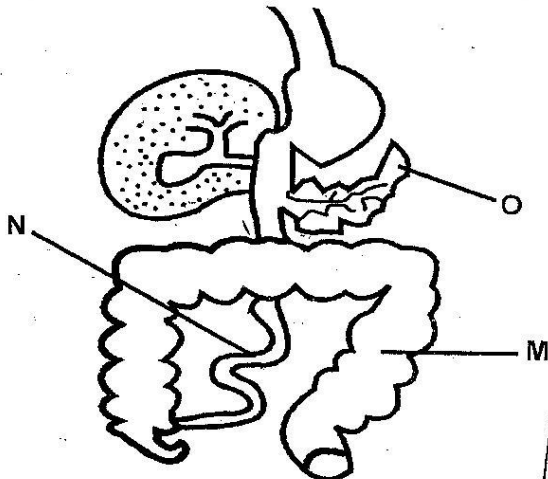
2. Which one of the following physical changes during adolescence takes place in girls only?

- A. Growth of pubic hair
- B. Increase in weight
- C. Onset of menstruation
- D. Appearance of acne

3. Which one of the following types of medicines are used to prevent diseases?

- A. Curatives
- B. Antibiotics
- C. Vaccines
- D. Painkillers

4. The diagram below shows part of the human digestive system.



The parts marked M, N, O respectively are:-

- | M                  | N               | O        |
|--------------------|-----------------|----------|
| A. ileum           | colon           | liver    |
| B. gall bladder    | duodenum        | pancreas |
| C. colon           | ileum           | pancreas |
| D. small intestine | large intestine | liver    |

5. The first set of teeth to grow in human beings are given at the following names **except**:-

- A. milk teeth
- B. shedding teeth
- C. deciduous teeth
- D. temporary teeth

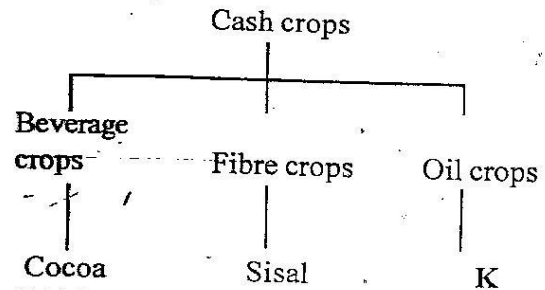
6. Which one of the following states what happens when the diaphragm moves downwards?

- A. The lungs become deflated
- B. The chest moves inwards
- C. The ribs move upwards
- D. Pressure in the lungs increases

7. The **releasing** of the indigestible materials from the body is called:-

- A. faeces
- B. absorption
- C. egestion
- D. digestion

8. The **flow chart** below shows a simple classification of cash crops.



Which one of the following crops can replace K?

- A. Cotton
- B. Corn
- C. Flax
- D. Cocoa

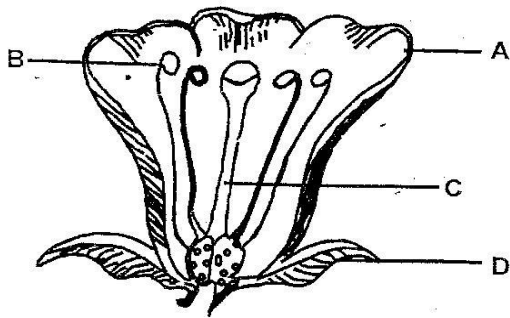
9. In the immunization schedule the DPT vaccine is first given at the age of:-

- A. 4 weeks
- B. 2 weeks
- C. 6 weeks
- D. 10 weeks

10. The following are characteristics of a certain weed.
- (i) *Small plant*
  - (ii) *Produces white flowers*
  - (iii) *Fruits are black*

The weed described above is likely to be:-

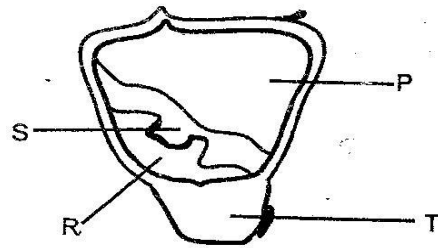
- A. wandering jew      B. sodom apple  
C. pigweed              D. oxalis
11. Which of the following statements is correct about HIV?
- A. HIV is transmitted through mosquito bites.
  - B. Children infected with HIV can pass it onto healthy children when playing.
  - C. HIV can get into open wounds.
  - D. Saliva has HIV and cannot cause infection.
12. Which one of the following plants is green non-flowering?
- A. Moss                      B. Lichen
  - C. Mushroom              D. Toad stool
13. The diagram below shows a flower.



Which part protects the flower when young?

- A. C                      B. A  
C. D                      D. B
14. Which one of the following crops is **not** a root tuber?
- A. Carrot                      B. Sweet potato
  - C. Irish potato              D. Yam
15. The following are parts of the female reproductive system except?
- A. Uterus                      B. Testis
  - C. Ovary                      D. Oviduct
16. The following are symptoms of a certain disease;
- (i) *Prolonged cough*
  - (ii) *Body becomes pale, thin and weak*
  - (iii) *Chest pain*
- Which disease has the above symptoms?
- A. Malaria                      B. Typhoid
  - C. Cholera                      D. Tuberculosis

17. The following is a diagram of a maize seed.



Food is stored in the part marked:-

- A. R                      B. P  
C. S                      D. T
18. Which one of the following is a useful fungi?
- A. Ringworm                      B. Bread mould
  - C. Penicillium                      D. Bracket tree
19. The following are all proper uses of medicine except?
- A. Taking medicine only when sick
  - B. Giving excess medicine to sick relatives
  - C. Completing the prescribed dosage
  - D. Taking medicine at the prescribed time
20. Which one of the following pairs of physical changes are for boys only?
- A. Increase in height and weight.
  - B. The voice breaks and chest broaden
  - C. Wet dreams and hips broaden
  - D. Growth of pubic hair and menstruation
21. Which one of the following changes in states of matter occurs as a result of temperature decrease?
- A. Melting and evaporation
  - B. Freezing and condensation
  - C. Freezing and melting
  - D. Evaporation and condensation
22. The following statements show what happens during exhalation **except**.
- A. the lungs deflate
  - B. the lungs deflate
  - C. the pressure in the chest decreases
  - D. the diaphragm moves upwards and forms a dome shape.
23. Pupils at Karaini primary gave the names of food crops as follows:
- Murage → vegetables
  - Joshua → legumes
  - Wambui → beverages
  - Jane → tubers
- Who was not correct?
- A. Murage                      B. Joshua
  - C. Wambui                      D. Jane

24. Which one of the following shows where digestion of fats takes place?

- A. Small intestines      B. Stomach  
C. Large intestines      D. Duodenum

25. The most effective method of controlling weeds in the farm is:-

- A. slashing  
B. uprooting  
C. using chemicals  
D. digging out

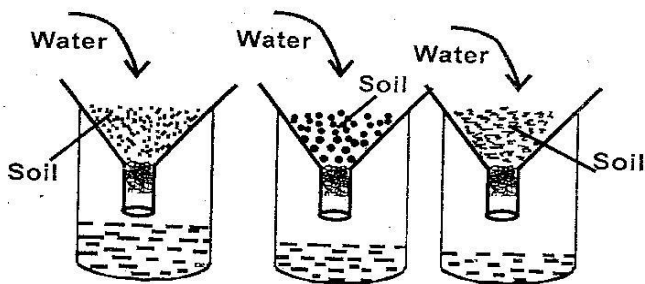
26. The transfer of heat through a vacuum is called:-

- A. conduction      B. radiation  
C. expansion      D. convection

27. Which one of the following materials is NOT an insulator?

- A. Iron      B. Rubber  
C. Wood      D. Cloth

28. Study the diagram below.



Standard six pupils did the above experiment on soil. They were investigating:-

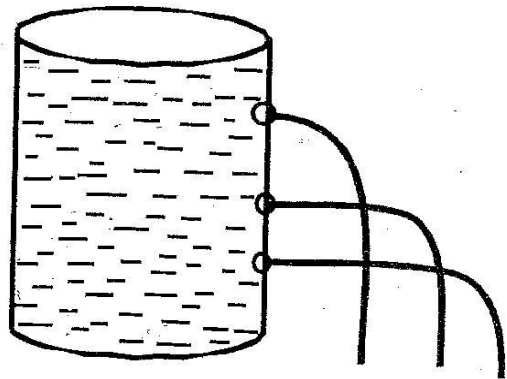
- A. soil drainage      B. soil capillarity  
C. soil texture      D. soil profile

29. Which of the following statements is NOT correct about the human tooth drawn below?



- A. chewing food  
B. tearing food  
C. cutting food  
D. none of the above

30. Std 5 pupils did the experiment below to investigate pressure in liquids.



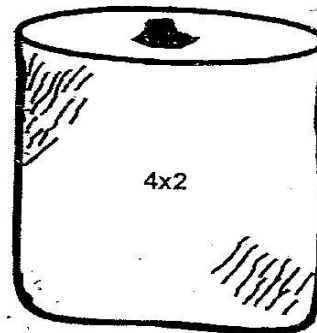
The above set-up shows that:-

- A. pressure in liquids decreases with depth.  
B. there is no pressure in liquids  
C. pressure in liquids increases with depth  
D. water has no pressure

31. Which one of the following is NOT a way of taking care of teeth?

- A. Opening soda bottle with the mouth?  
B. Chewing hard and crunch foods  
C. Visiting a dentist regularly  
D. Eating fruits and vegetables

32. As pupils were playing in the field, they found a small container with a label.



Inside the container was medicine. The label

4 x 2 on-the container means:

- A. take two medicines four times daily.  
B. take 2 medicine only.  
C. take 4 medicines four times daily  
D. take 4 medicines twice daily.



33. In a certain school there was a child in nursery school who looked very thin like an old man. The child was possibly suffering from:-  
 A. marasmus                      B. kwashiorkor  
 C. rickets                            D. anaemia
34. Which one of the following animals is NOT a reptile?  
 A. Snake                            B. Newt  
 C. Tortoise                        D. Lizard
35. Sperms in males are made in the:-  
 A. penis                            B. urethra  
 C. testis                            D. scrotum
36. When we breath in, air is cleaned in the nose by:-  
 A. oxygen                        B. water  
 C. mucus and hair                D. the nose lining
37. The part of the alimentary canal where absorption of food takes place is called:-  
 A. ileum                            B. colon  
 C. rectum                          D. stomach
38. Diseases that affect us for **not** eating the right kind of foods are called:-  
 A. contagious diseases    B. food diseases  
 C. water borne diseases    D. deficiency diseases
39. Animals whose body temperature changes with the surrounding are called  
 A. warm blooded animals  
 B. bloody animals  
 C. constant body temperature  
 D. cold-blooded animals
40. Which one of the following is NOT an importance of proper lighting in a house?  
 A. To see clearly  
 B. To read comfortably  
 C. To discourage pests  
 D. To cool the house
41. Human teeth do different things as a person is eating food. The human teeth that chew food are called:-  
 A. molars                        B. canines  
 C. incisors                        D. premolars
42. Things present in soil such as air, water and humus are called:-  
 A. soil components        B. things in the soil  
 C. living things                D. soil erosion
43. A Std 5 pupil took some soil and heated it in a container which was covered. He later noted that some water was on the lid. This shows that soil has:-  
 A. humus                        B. water  
 C. air                              D. living things
44. The following are ways of preventing tuberculosis except?  
 A. Sleeping under treated mosquito nets  
 B. Living in well-ventilated rooms  
 C. Boiling drinking milk thoroughly  
 D. Giving BCG vaccine to children
45. A windvane works under one of the following principles. Which one?  
 A. Matter occupies space  
 B. Air in motion  
 C. Liquids expand when heated  
 D. Matter contracts when cooled
46. The following are pairs of plants. Which one **cannot** make its own food?  
 A. Cedar and yeast  
 B. Puffball and mould  
 C. Pine and cypress  
 D. Toadstool and moss
47. Pupils in Grade one, two and three have some missing teeth. This is because they shed teeth. The shed teeth are called:-  
 A. wisdom teeth                B. premature teeth  
 C. mature teeth                D. deciduous teeth
48. One of the following plants is a beverage. Which one?  
 A. Bean                            B. Maize  
 C. Coffee                        D. Rice
49. Heat transfer in liquids and gases is called:  
 A. radiation                        B. convection  
 C. conduction                    D. expansion
50. Digestion of food is completed in the:-  
 A. large intestine                B. stomach  
 C. ileum                            D. rectum