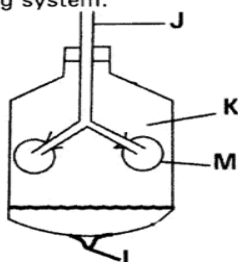


KCPE 2020 PRACTICE EXAMINATION

MODEL PAPER 1 SCIENCE

MODEL PAPER 1

1. Which one of the following organs does NOT help in removal of waste products or excretion?
A. Lungs B. Rectum C. Kidneys D. Skin
2. The diagram below shows a model of the breathing system.



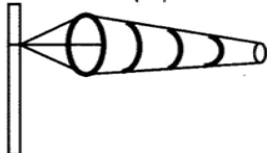
From the diagram which letter represents the thorax?

- A. J B. K C. L D. M
3. Which one of the following produces bile Juice?
A. Liver B. Ileum
C. Gallbladder D. Duodenum
4. The diagram below shows a type of teeth found in man.



The function of the type of tooth shown above is

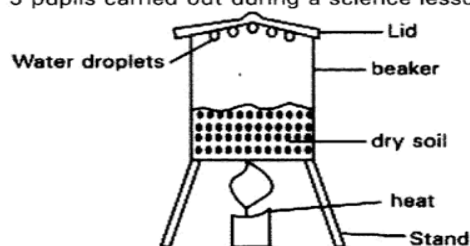
- A. grinding food B. chewing food
C. tearing food D. cutting food
5. The following are physical changes that occur in boys during adolescence stage. Which one does NOT?
A. Growth of pubic hair
B. Enlargement of hips
C. Having wet dreams
D. Breaking of the voice
6. Which one of the following shows the 4th and the 8th planet in the solar system respectively?
A. Neptune and Mars B. Earth and Uranus
C. Mars and Saturn D. Mars and Neptune
7. The diagram below shows a weather instrument standard 5 pupils made.



Which two aspects of weather does it measure?

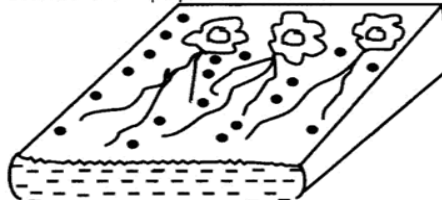
- A. speed of wind and strength of wind
B. direction of wind and strength of wind
C. strength of wind and pressure of wind
D. speed of wind and amount of moisture
8. Standard 4 pupils saw dark grey clouds in the sky. What weather did they experience?
A. Strong winds B. Calm weather
C. Low temperatures D. Heavy rainfall

9. Which one of the following shows foods that will help in preventing Kwashiorkor?
A. Maize, beans and Spinach
B. Cabbage, eggs and rice
C. Fish stew, boiled eggs and beans
D. Bread, cowpeas and green grams
10. Which one of the following methods of food preservation preserves food by dehydrating bacteria and fungi?
A. Canning B. Salting
C. Drying D. Smoking
11. The diagram below shows an experiment standard 5 pupils carried out during a science lesson.



From the experiment the pupils concluded that soil contains

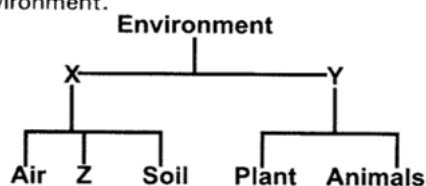
- A. air B. living things
C. moisture D. humus
12. Which statement below is NOT true about clay soil?
A. Clay soil has a high drainage.
B. Clay soil cracks when dry.
C. Clay soil has a smooth texture
D. Clay soil has little air spaces.
13. The diagram below shows a type of soil erosion standard six pupils observed.



The type of soil erosion shown above is known as

- A. gully B. sheet C. rill D. splash
14. Which of the following is NOT obtained from organic matter?
A. Compost manure
B. Sulphate of Ammonia
C. Farm yard manure
D. Green manure
15. The following are various uses of water on the farm. Which one is NOT?
i. Cleaning farm tools
ii. Watering animals
iii. Mixing acaricides
iv. Cooling engines
16. Which of these diseases can be controlled by;
(a) Proper sanitation
(iii) Wearing hand gloves when handling stagnant water.
(iv) Wearing gumboots when walking in stagnant water.

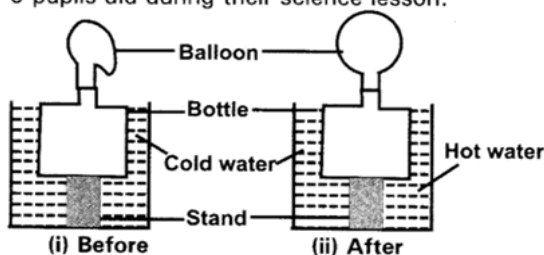
- (v) Boiling drinking water.
- Typhoid, cholera, malaria.
 - Typhoid, cholera, bilharzia.
 - Typhoid, measles, malaria.
 - Bilharzia, tuberculosis, tetanus.
17. Which of these substances do not contaminate air and water?
- Releasing raw industrial gases.
 - Dumping metal cans on the ground.
 - Exhaust fumes from vehicles.
 - Application of acaricides in livestock.
18. Which of the following statements about sinking and floating is **TRUE**?
- A thick stick sinks in water because of size.
 - A short wire sinks in water due to its shape.
 - A metal ball sinks in water because of material.
 - A ferry floats in water because of shape.
19. Standard eight pupils mixed soap and hard water. Which of the following substance did they observe?
- A. Fur B. Scum C. Lather D. Scale
20. The chart below shows how standard Seven Pupils classified the various components of the environment.



In the table below the correct identity of X, Y, and Z is _____.

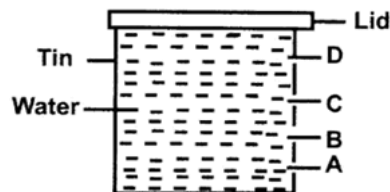
	X	Y	Z
A	Water	Abiotic	Biotic
B	Abiotic	Biotic	Water
C	Biotic	Water	Abiotic
D	Biotic	Abiotic	Water

21. The diagram below shows an experiment standard 5 pupils did during their science lesson.



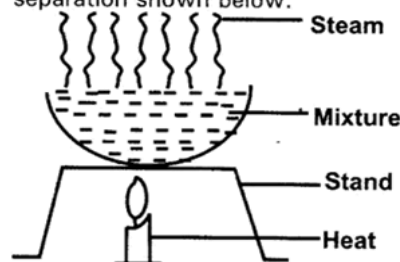
From the experiment, the pupils concluded that _____.

- liquids expand when heated
 - air occupies space
 - air exerts pressure
 - air expand on heating
22. Which of the following does NOT affect floating and sinking of an object?
- A. Weight B. Material C. Size D. Density
23. Which of the following consists of materials those can be attracted by a magnet **ONLY**?
- Nickel, Copper, Cobalt.
 - Coper, Chromium, Silver.
 - Iron, Steel, Cobalt.
 - Chromium, Tin, Aluminium.
24. The diagram below shows an experiment standard 4 pupils of Lepic School carried out during their science lesson.



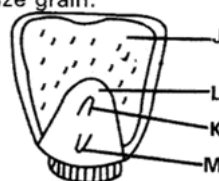
From the observation made, which hole threw water nearest?

- A. D B. C C. B D. A
25. When put together, which two components of air make approximately 22% of air by volume?
- Rare gases and oxygen
 - Oxygen and Carbon dioxide
 - Nitrogen and rare gases
 - Carbon dioxide and rare gases
26. The changes of state that require an increase in temperature are _____.
- melting and solidification
 - condensation and freezing
 - evaporation and melting
 - freezing and melting
27. Standard 7 pupils carried out the method of separation shown below.



Which one of the following mixture were the pupils separating?

- Sand and Water
 - Salt and water
 - Flour and Water
 - Spirit and water
28. Which one of the following materials will a magnet NOT attract?
- A. Tungsten B. Cobalt C. Copper D. Nickel
29. Which one of the following plants is not an example of a legume crop?
- A. Beans B. Cowpeas
C. Barley D. Groundnuts
30. Which one of the following groups consists of non-flowering plants only?
- Moss, Kales, pine
 - Cyprus, grass, fern
 - Sisal, grass, onion
 - Moss, Lichen, algae
31. The diagram below shows the internal parts of a maize grain.



Which letter represents the part that stores food?

- A. J B. K C. L D. M
32. Which statement below is NOT correct about a flower that is pollinated by a bee?
- The flower produces light pollen grains.
 - The flower has nectar.
 - The flower has brightly coloured petals.
 - The flower has large flower parts.
33. Njau was studying feeding relationship among butterflies, kites and lizards in a forest near his

school. Which of the following food chains CORRECTLY shows the feeding relationship?

- Kite → Lizards → Nectar → Butterflies
 - Kite → Lizards → Butterflies → Nectar
 - Butterfly → Nectar → Kite → Lizard
 - Nectar → Butterflies → Lizards → Kite
34. Which one of the following is NOT a feature of plants that grow in dry areas?
- They have fleshy stems for storing water
 - They have thin waxy cuticle on their leaves
 - They have deep roots to look for water
 - They have needle like leaves.
35. Which of the following practices will NOT help in preventing the spreading of HIV/AIDs?
- Screening blood before transfusion
 - Encouraging traditional circumcision
 - Abstaining from sex.
 - Avoid sharing of cutting tools.
36. The following are effects of HIV/AIDs.
- Lowers economic growth.
 - Lowers self esteem.
 - Leads to lack of parental care.
 - Makes one emotionally weak.

Which of the above effects are effects of HIV/AIDs on the individual?

- A. i and ii B. iii and iv C. ii and iii D. ii and iv
37. Which of the following vaccines is administered orally?
- A. B C G B. Antipolio C. Antimeasles D. D PT
38. The following are symptoms of a certain communicable disease.
- Fever
 - Headache
 - Vomiting
 - Pain in joints

Which of the following diseases is described above?

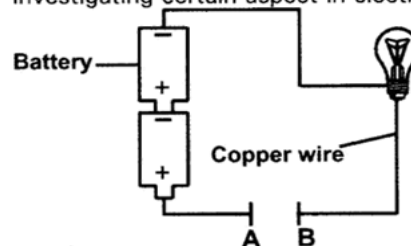
- A. Tuberculosis B. Measles
C. Malaria D. Typhoid
39. Which one of the following is NOT an effect of abusing inhalants?
- Brain damage
 - Drowsiness
 - Impaired vision
 - Nervous disorder
40. Standard five pupils grouped small animals as shown below.
- Group A – beetle, spider, tick
Group B – aphid, weevil, moth
Group C – ladybird, mite, ant
Group D – spider, moth, tick
- Which group grouped the small animals correctly?
- A. Group A B. Group B
C. Group C D. Group D

41. Which of the following methods of grazing can one practice in areas that have high population?
- Paddock grazing
 - Stall feeding
 - Strip grazing
 - Herding
42. Which of these parasites can be controlled by practicing rotation grazing effectively?
- Tapeworms, ticks, fleas.
 - Hookworms, liverflukes, tsetse fly.
 - Tapeworms, ticks, roundworms.
 - Fleas, tsetse fly, ticks.
43. Standard eight pupils observed the bird shown below.



The bird shown above is likely to be found in a

- A. flower bed B. river C. forest D. swamp
44. Which one of the following is NOT a source of light?
- A. Moon B. Glow worm C. Star D. Sun
45. Standard seven pupils in Uriri primary school were investigating certain aspect in electricity.



Which of these materials will NOT make the bulb light if put between A and B?

- A. Silver coin, copper coin, aluminium foil.
B. Razor blade, iron needle, ten shilling coin.
C. Plastic ruler, wax, piece of glass.
D. Aluminium, brass, nickel.
46. Which one of the following sources of electricity are renewable ONLY?
- Wind generator, geothermal generator, petrol generator.
 - Petrol generator, bicycle dynamo, diesel generator.
 - Wind generator, geothermal generator, hydro electric generator.
 - Solar panel, diesel generator, petrol generator.
47. Which one of the following is NOT a reason to why tools should be maintained?
- To avoid accidents
 - To make them more efficient.
 - To make them more beautiful.
 - To make them more durable.
48. Which of the following levers has the effort distance greater than the load distance?
- Wheelbarrow
 - Spade
 - Hammer
 - Charcoal tongs
49. The following statements about levers are NOT TRUE expect?
- In a crowbar the effort is between load and fulcrum.
 - The effort is found between fulcrum and load in a wheelbarrow.
 - In a wheelbarrow the fulcrum is between load and effort.
 - The effort is found between load and fulcrum in a spade.
50. Which one of the following is NOT an example of an inclined plane?
- Winch
 - Road winding up a hill
 - A screw nails
 - Stair case