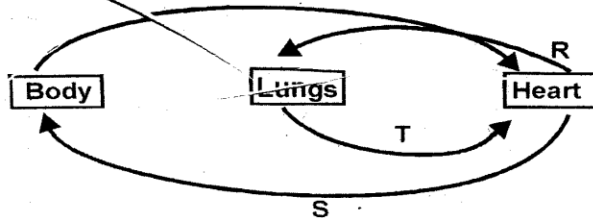


STANDARD SEVEN - 2018

SCIENCE

Time: 1hr 40mins

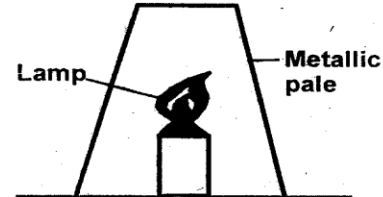
1. The diagram below shows a simple blood circulation.



Name the blood vessels marked **R**, **S** and **T** respectively.

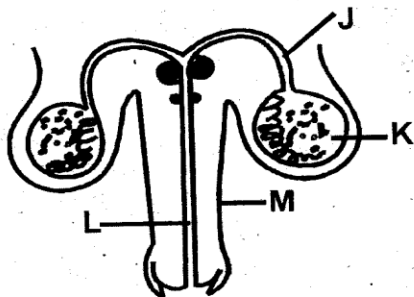
- A. Pulmonary vein, venacava, pulmonary artery.
 - B. Aorta, pulmonary vein, venacava
 - C. Pulmonary artery, venacava, pulmonary vein
 - D. Pulmonary artery, aorta, pulmonary vein
2. Which material below can one **not** see through at all?
- A. Mirror
 - B. Clear water
 - C. Waxed paper
 - D. Air
3. Which crop pest below **mostly** destroys seedlings?
- A. Weevils
 - B. Cutworm
 - C. Weaver birds
 - D. Stalkborers
4. Which one of the following is an example of a conserved feed?
- A. Salt lick
 - B. Fodder
 - C. Pasture
 - D. Silage
5. The following are effects of HIV infection:
- i) **Poor performance at place of work.**
 - ii) **Increased rate of school dropouts.**
 - iii) **One feeling stigmatized.**
 - iv) **Congestion in health centres.**
 - v) **High rate of orphanage.**
- Which one consists of the effects of HIV infection to the nation?
- A. i, iv
 - B. iii, v
 - C. ii, iv
 - D. ii, iii

6. The diagram below shows an activity carried out by some standard five pupils.



- Which methods of heat transfer took place in the pale?
- A. Radiation and convection
 - B. Conduction only
 - C. Conduction and radiation
 - D. Convection only
7. Which one of the following is the function of the largest component of air?
- A. Making plant food through photosynthesis
 - B. Used in breathing by animals.
 - C. Used in preserving filaments in light bulbs.
 - D. Formation of protein in some plants.
8. Which statement below is **correct** about balancing on a see-saw?
- A. Both the lighter and heavier pupils should sit on the same side.
 - B. The heavier pupil should move far from pivot.
 - C. The pivot should be moved closer to the lighter pupil.
 - D. Two pupils of equal masses should sit at equal distance from the pivot.
9. Which one of the following is the **main** function of fruits to plants?
- A. To store food
 - B. To provide animals with food
 - C. To contain seeds
 - D. To act as the reproductive organ
10. The following are ways in which medicines can properly be used **except**
- A. safely store excess medicines for future use.
 - B. follow the instructions when using medicines.
 - C. do not insist to be given medicines in hospitals.
 - D. immediately stop using medicines with serious side effects.

11. The diagram below shows parts of male reproductive system.



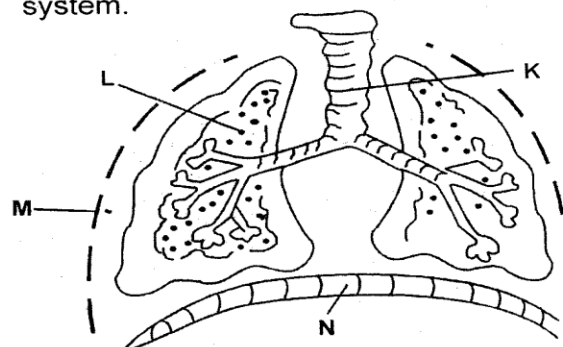
Which letter represents the part that introduces sex cells into the birth canal?

- A. L B. M
C. K D. J
12. The following are signs of a certain nutritional deficiency disease:
i) **Muscle wastage.**
ii) **Wrinkled skin.**
iii) **Severe loss of weight.**
The above patient should be advised to:
A. take food rich in protein.
B. include enough of food rich in iron in her meals.
C. feed on enough balanced diet.
D. include enough calcium in her diet.
13. Which weather instrument below uses the principle of expansion and contraction of matter?
A. Raingauge B. Windsock
C. Air thermometer D. Windvane
14. Which livestock parasite below destroys wool in sheep?
A. Flea B. Tick
C. Louse D. Mite
15. Which one of the following is **not** a way in which plants depend on animals?
A. Some animals are sources of food to plants.
B. Animals provide some plants with support.
C. Animals improve soil fertility through their waste.
D. Plants use carbon dioxide exhaled by animals for photosynthesis.
16. The chart below shows an immunization table for infants.

<u>Vaccine</u>		<u>Age</u>
3 rd DPT	-	3½ months
BCG	-	6 weeks
1 st Antipolio	-	At birth
Yellow fever vaccine	-	14 weeks
Which diseases were their vaccines correctly matched with the age they are given?		

- A. Polio and DPT
B. Yellow fever and polio
C. Tuberculosis and tetanus
D. Tuberculosis and yellow fever

17. All the following blood vessels transport blood that is bright red in colour **except**
A. aorta B. pulmonary vein.
C. capillaries D. venacava
18. Which component of the environment below covers the largest surface of the earth?
A. Soil B. Plants
C. Water D. Air
19. The following are characteristics of a certain vertebrate:
i) **It lays eggs.**
ii) **Has scales.**
iii) **Has constant body temperature.**
The above vertebrate is **most likely** to be
A. bat B. crocodile
C. kingfisher D. spiny ant eater
20. Which group of planets below are in correct order from the sun?
A. Earth, Mars, Venus
B. Mars, Jupiter, Saturn
C. Neptune, Jupiter, Uranus
D. Mercury, Mars, Venus
21. The following are ways of polluting water. Which one is **not**?
A. Discharging effluent in water sources.
B. Flood washing soil into the river.
C. Oil spillage into the ocean.
D. Channeling treated sewage into waterways.
22. Which one of the following is **not** a way in which animals protect themselves from danger?
A. Sucking blood B. Stinging
C. Hiding in a shell D. Flying away
23. The diagram below shows the breathing system.



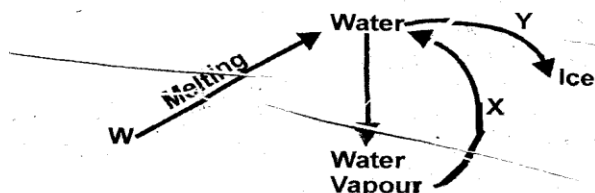
Which part is kept open by the C-shaped rings?

- A. K B. M
C. N D. L

24. Which one of the following is **not** a modern method of food preservation?

A. Drying
B. Use of low temperature
C. Canning
D. Use of honey

25. The chart below shows changes of states of matter.



Which one of the following can **correctly** fit in the parts marked **W**, **X** and **Y**?

W	X	Y
A. Freezing	Evaporation	Melting
B. Ice	Condensation	Freezing
C. Evaporation	Freezing	Melting
D. Ice	Evaporation	Freezing

26. Which one of the following is **not** a way of controlling external livestock parasites?

A. Practising paddocking
B. Drenching the livestock
C. Dipping and spraying
D. Clearing bushes around the farm

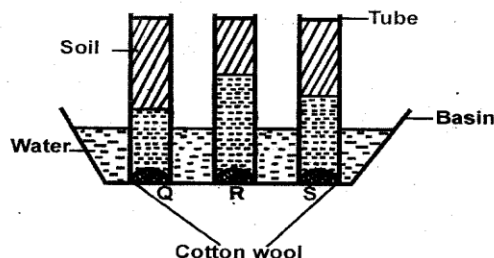
27. Which drug below is **likely** to cause a disease of the livers?

A. Tobacco
B. Khat
C. Inhalant
D. Alcohol

28. Which one of the following is **not** a common sign in both typhoid and bilharzia?

A. Vomiting
B. Fever
C. Rashes on the skin
D. Diarrhoea

29. Standard five pupils from a certain school carried out the experiment shown below.



Which letter represents the soil that is **likely** to make the shortest ribbons?

A. R
B. S
C. Q
D. A mixture of Q and R

30. Which substance below is **not** likely to change state when its temperature is increased?

A. Candle wax
B. Cooking oil
C. Methlated spirit
D. Water vapour

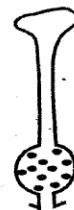
31. Which substance below is **likely** to evaporate fastest when placed on the sun in an open container?

A. Methlated spirit
B. Water
C. Petrol
D. Kerosene

32. Which one of the following is **not** a function of air as a component of the environment?

A. All living organisms depend on carbon dioxide for breathing.
B. Nitrogen is used by some plants to make protein.
C. Human beings use carbon dioxide to preserve food.
D. Carbon dioxide is used in photosynthesis.

33. The diagram below shows parts of a flower.



The above parts of the flower is called;

A. pistil
B. stigma and style
C. stamen
D. calyx

34. Which one of the following is **not** a common change in adolescents of both sexes?

A. Growth of hair on pubic area.
B. Acne may appear on the face.
C. Increase in height and weight.
D. Production of mature male sex cells.

35. Which method of grazing is **most** suitable to a farmer with limited land?

A. Herding
B. Paddocking
C. Stall feeding
D. Strip grazing

36. Which one of the following is **not** a way of using water sparingly?

A. Watering plants through drip irrigation.
B. Harvesting rain water.
C. Using minimum amount of water for domestic chores.
D. Insulating hot water pipes to reduce evaporation rate.

37. Roundworms attack all the following body organs **except**

A. small intestines
B. brain
C. lungs
D. liver

38. Which pair of gases below leads to the formation of acid rain?

A. Carbon dioxide and nitrogen gas.
B. Carbon monoxide and oxygen.
C. Sulphur dioxide and nitrogen oxide.
D. Oxygen and sulphur dioxide.

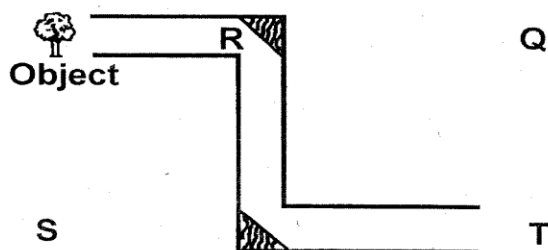
39. Which type of soil erosion is **not** easy to notice when taking place?

A. Gully erosion
B. Rill erosion
C. Splash erosion
D. Sheet erosion

40. Which food below is **not** rich in fibre?

A. Maize
B. Orange
C. Eggs
D. Kales

41. The diagram below shows a simple periscope.



Which letter shows the **correct** position where the image of the object was seen?

A. S
B. T
C. Q
D. R

42. Standard six pupils from a certain school were told to collect the following materials:

i) **Candle**
ii) **Basin**
iii) **Glass jar**
iv) **Water**

Which one of the following were they **likely** to investigate?

A. Change of states of matter
B. Expansion and contraction of liquids
C. Liquids have indefinite shape
D. Uses of a certain component of air

43. Which one of the following is **not** a type of force?

A. Mass
B. Gravity
C. Friction
D. Weight

44. Which pair of diseases below is a child immunized against at the age of 9 months?

A. Tuberculosis and DPT
B. Measles and yellow fever
C. Polio and DPT
D. Measles and tetanus

45. Which property of light causes pools of water to appear shallower than they really are?

A. Reflection
B. Dispersion
C. Refraction
D. Reflection and dispersion

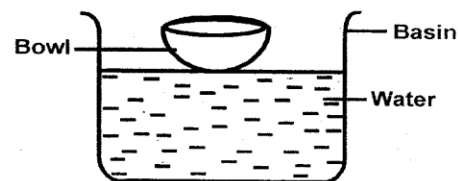
46. The following are signs and symptoms of a certain water-borne disease:

i) **Headaches.**
ii) **Sore throat.**
iii) **Muscular pain.**
iv) **Diarrhoea.**

The above disease is **most** likely to be:

A. bilharzia
B. typhoid
C. tuberculosis
D. malaria

47. Some standard four girls placed a wooden bowl on water as shown below.



The bowl **mainly** floated on water because of its

A. material
B. size
C. shape
D. weight

48. Which one of the following **does not** make humus in soil?

A. Animal waste
B. Organic mulches
C. Growing plants
D. Dead animals

49. Which part of the maize seed below stores food for the embryo plant?

A. Cotyledon
B. Radicle
C. Seed coat
D. Endosperm

50. Which pair below consist of the ways in which smoking preserves food?

A. Killing bacteria and removing moisture.
B. Coating and dehydration.
C. Making bacteria inactive and coating.
D. Killing bacteria and coating.