

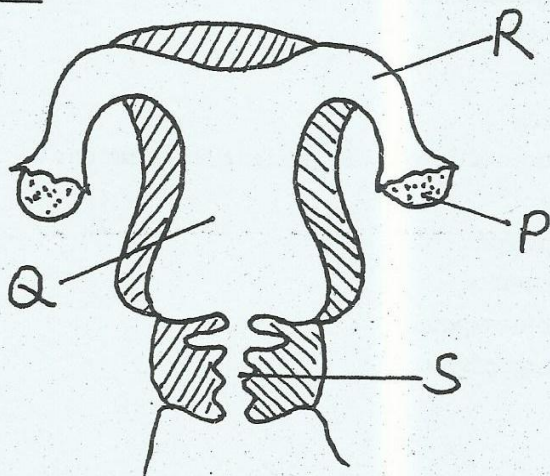
Standard 6 End Term 1 Exam, 2016

SCIENCE

TIME: 1HR. 40MINS

- The passage of food from the mouth to the anus is called _____.
A. oesophagus B. gut
C. ileum D. colon
- The period between entry of disease causing germs into our bodies and the first signs and symptoms is referred to as _____.
A. symptomatic B. incubation
C. immunity D. deficiency
- Counselling done before the HIV test is carried out is called _____.
A. guidance and counselling
B. post - test counselling
C. pre - test counselling
D. voluntary counselling and testing
- Increase in mass and height is a physical change that occurs in _____.
A. girls only B. boys only
C. both boys and girls D. adults
- Which one of the following is NOT a communicable disease?
A. Malaria B. Typhoid
C. Pertussis D. Diphtheria
- What is the name of the part marked R.
A. vagina B. urethra
C. oviduct D. ovarian tube
- In which part does the development and the growth of the baby takes place?
A. Q B. R
C. P D. S
- Which part produces sex cells?
A. Q B. R
C. P D. S
- Which of the following diseases is vaccinated against at the age of 9 months?
A. Polio
B. Measles
C. Tuberculosis
D. Diphtheria
- The following are effects of HIV/AIDS to the nation except?
A. Low agricultural production
B. Poor medical care
C. Poor economy
D. Stigmatization
- Which of the following characteristics are similar to both chicken and frogs?
A. They have a constant temperature
B. Breath through lungs
C. Have scales
D. Lay fertilized eggs
- Which one of the following crops stores food in the same way as sugarcane?
A. Onion
B. Maize
C. Sweet potato
D. Irish potato

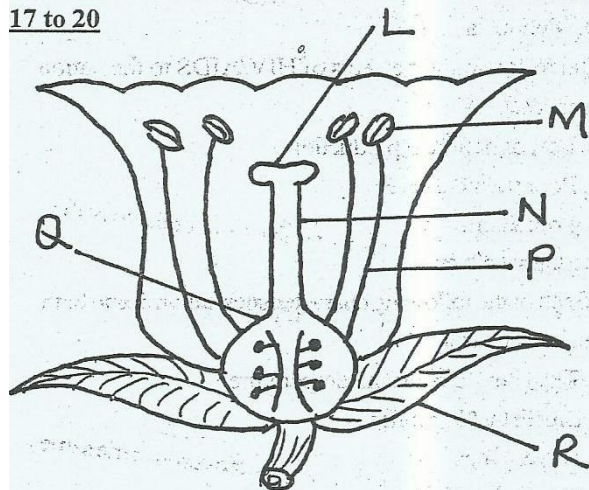
The diagram below represents the female reproductive system



13. Which of the following animals feeds is prepared by cutting, drying and storing?
 A. Fodder
 B. Concentrates
 C. Hay
 D. Silage
14. Which is the best way for youth to protect themselves from HIV/AIDs?
 A. Having safe and protected sex
 B. Abstinence
 C. Being faithful to one partner
 D. Sharing cutting objects
15. The whole collection of sun planets, stars and moon is called _____
 A. solar system
 B. satellites
 C. galaxy
 D. astronomy
16. Sperms and urine are passed out through the _____ in the male reproductive system.
 A. testis
 B. ureter
 C. spermduct
 D. urethra

Study the diagram of a flower below to answer questions

17 to 20

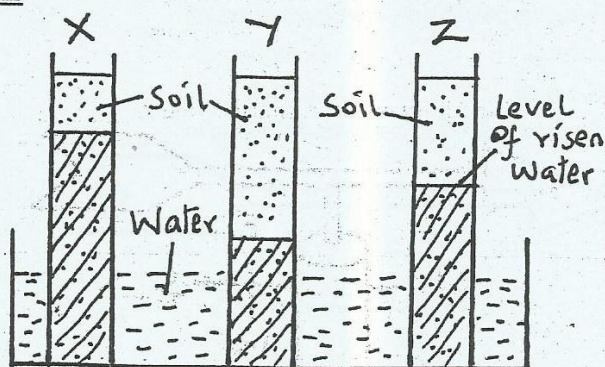


17. Name the part marked K.
 A. petal
 B. sepal
 C. calyx
 D. pistil
18. Which parts makes up the stamen?
 A. LMQ
 B. KR
 C. MP
 D. LM

19. What is the function of the part marked L?
 A. produce ovules
 B. produces pollen grains
 C. receives pollen grains
 D. fertilizes pollen grains
20. Which part protects the flower at bud stage?
 A. R
 B. K
 C. L
 D. M
21. Which is the main method of heat transfer in liquids?
 A. Conduction
 B. Convection
 C. Radiation
 D. Boiling
22. Which of the following is another name for wind pipe?
 A. Gullet
 B. Lungs
 C. Bronchus
 D. Trachea
23. In which method of grazing are livestock kept and fed in stalls?
 A. Herding
 B. Tethering
 C. Strip
 D. Zero
24. Which one of the following is NOT an importance of HIV testing?
 A. To decide on marriage
 B. To change behaviour
 C. To spread the HIV
 D. To plan the future of ones dependants
25. Which one of the following does not take place in leaves of plant?
 A. Transpiration
 B. Storage of food
 C. Absorption of water and mineral salts
 D. Breathing
26. The change of water from steam to liquid is called _____
 A. evaporation
 B. condensation
 C. melting
 D. boiling
27. Which one of the following is not an effect of heat on a substance?
 A. Expansion
 B. Contraction
 C. Rise in temperature
 D. Change of state

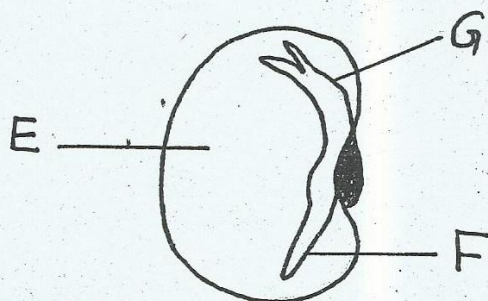
28. Which of the following shows the importance of fibre?
- Provides energy
 - Help in emptying bowels
 - Cools the body
 - Allows constipation
29. Which of the following is not a characteristic of wind pollinated plant?
- Sticky stigma and bright petals
 - Alot of pollen grains
 - Feathery stigma
 - Anthers hangs out

The diagram below illustrates the rise of water in different soils

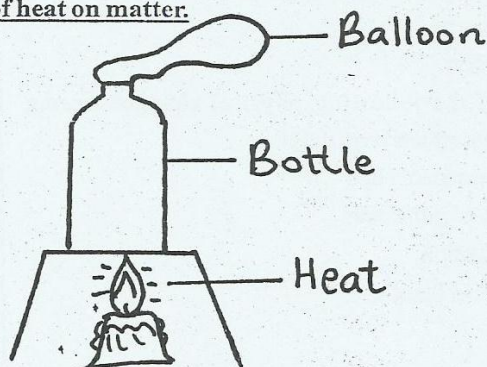


30. Name the type of soil in X, Y and Z respectively.
- clay, loam, sand
 - sand, loam, clay
 - clay sand, loam
 - loam sand, clay
31. Which process in soils was being investigated?
- Capillarity
 - Water retention
 - Drainage
 - Soil profile

Use the bean seed below to answer questions 32-33



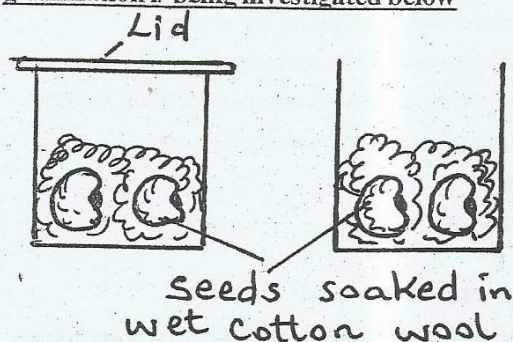
32. Name parts E, F and G respectively
- Cotyledon, Plumule, Radicle
 - Cotyledon, Radicle, Plumule
 - Endosperm, plumule, Radicle
 - Endosperm, Radicle, Plumule
33. Which two parts makes up the embryo?
- EF
 - FG
 - EG
 - FE
34. In which part of digestive system are germs in the food killed?
- Stomach
 - Ileum
 - Mouth
 - Liver
35. What are detergents?
- Chemicals used in cleaning clothes and removing stains from surfaces
 - Chemicals used for lighting and cooking
 - Chemicals used to kill external animal parasites
 - Artificial chemicals used to improve the soil fertility
36. Which type of weed grows along the ground?
- Pigweed
 - Wandering Jew
 - Oxalis
 - Black jack
37. Which of the following are the conditions for counselling. It must be
- voluntary and open
 - compulsory and confidential
 - voluntary and confidential
 - compulsory and open
38. The set up below was used to investigate the effect of heat on matter.



- The effect showed that _____
- Gases expands when heated
 - Solids bottles expands when heated

- C. Balloons bursts when heated
D. Candles melts when heated
39. Which of the following animals is not an amphibian?
A. Newt
B. Toad
C. Salamander
D. Chameleon
40. Which one of the following is not a sign and symptoms of tuberculosis?
A. Stiffness of joints
B. Chest pains
C. Prolonged coughing
D. Cough with blood

41. Which of the following conditions necessary for germination is being investigated below



- A. air
B. soil
C. water
D. cotton wool
42. Which part of a seed allows water and air to enter during germination?
A. Hilum
B. Micropyle
C. Endosperm
D. Cotyledon
43. Which of the following physical changes among adolescents affects boys only?
A. Enlargement of Hips
B. Growth of pubic hair
C. Menstruation
D. Growth of beards

44. Which of the following groups contains non flowering plants only

A. Algae, Mosses, Fungi
B. Beans, Ferns, Maize
C. Algae, Fungi, Grass
D. Maize, Fungi, Algae

45. A crushed bottle top sinks in water due to its

A. size
B. weight
C. shape
D. type of material

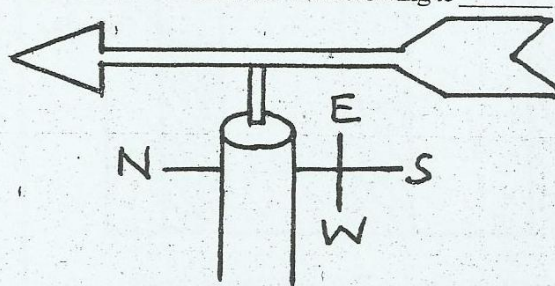
46. Immunization of diseases is very important because it

A. cures diseases
B. prevents diseases
C. relieve pain
D. kills pain

47. Which type of plants have tap root system

A. fungi
B. monocots
C. maize
D. dicots

48. To which direction is the wind blowing to



A. East
B. North
C. South
D. West

49. Which of the following characteristics is not for clay soils?

A. Best in capillarity
B. Gases when dry
C. Used in modelling
D. Best in farming

50. _____ is the other name given to the testa.

A. Cotyledon
B. Seed leaf
C. Radicle
D. Seed coats