

**SCIENCE PAPER**  
**CLASS SIX**  
**2015**

**AVAILABLE ONLINE AT:**

Schools Net Kenya Consultancy

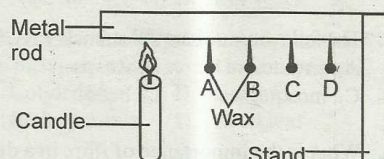
**P.O. Box 8076 – 00200 Nairobi, Kenya | Tel: +254202319748**

**E-mail: [infosnkenya@gmail.com](mailto:infosnkenya@gmail.com) | [www.schoolsnetkenya.com](http://www.schoolsnetkenya.com)**

## SCIENCE

Time: 1 hour 40 minutes

1. Which one of these diseases is spread through air?  
A. Malaria                      B. Trypanosomiasis  
C. Whooping cough      D. Cholera
2. Which of these is **NOT** a necessary condition for germination?  
A. Soil                              B. Air  
C. Warmth                      D. Moisture
3. Lack of phosphorus in the body leads to which deficiency disease?  
A. Kwashiorkor              B. Marasmus  
C. Anaemia                      D. Rickets
4. Kipchoge fitted a wooden handle on his frying pan. The wood  
A. serves as a conductor of heat.  
B. serves as an insulator.  
C. made the pan last longer.  
D. serves as an insulator
5. Std 6 pupils from Kamene primary school carried out an experiment as shown below.

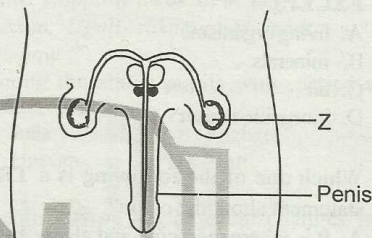


What were they investigating?

- A. Conduction              B. Convection  
C. Radiation              D. Evaporation
6. A person suffering from cholera loses a lot of water through  
A. sweating and vomiting.  
B. diarrhoea and sweating.  
C. tears and diarrhoea.  
D. vomiting and diarrhoea.

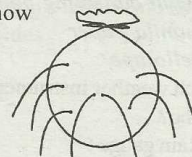
7. Which one of the following materials will **NOT** sink even if you change the shape?  
A. Rubber and silver  
B. Wax and plastic  
C. Iron and copper  
D. Steel and plastic

8.



In the diagram above the function of part marked Z is to

- A. take sperms to the sperm ducts.  
B. store sperms.  
C. produce sperms.  
D. release sperms to the outside.
9. Kamene was going home from school. She found a weed which had an unpleasant smell and produces yellow flowers. Which was it?  
A. Wandering jew  
B. Mexican marigold  
C. Oxalis  
D. Sodom apple
  10. Convection is heat transfer in  
A. solids                      B. liquids  
C. gases                      D. gases and liquids
  11. The experiment below was done by pupils in Std 4 to show



- A. pressure in liquids is equal at the same level.  
B. pressure in liquids move in a straight line.  
C. pressure in liquids exerts in all directions.  
D. pressure in liquids decreases with depth.

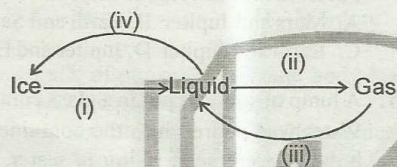
12. Why should a rain gauge be placed 30cm above the ground?
- To prevent water on the ground from splashing into the funnel.
  - To prevent wind from knocking it over.
  - To allow water to get into the rain gauge easily.
  - To reduce amount of evaporation of water collected.
13. The following are the components of soil **EXCEPT**
- living organisms
  - minerals
  - air
  - inorganic matter
14. Which one of the following is a **TRUE** statement about the colon?
- It is where medicine and alcohol are absorbed.
  - It is where water gets absorbed.
  - It is where digested food gets absorbed.
  - It is where glucose is absorbed.
15. The following are not functions of a fruit **EXCEPT**
- transporting water
  - transpiration
  - production of seeds
  - photosynthesis
16. Std 5 pupils of Kieni primary school collected the following materials.
- funnel
  - a plastic bottle
  - small collecting bottles
  - manila paper
  - cellotape
- Which weather instrument were they making?
- Rain gauge
  - Liquid thermometer
  - Windvane
  - Windsock
17. During breathing in, the following activities take place.
- Pressure is reduced in the chest cavity.
  - Diaphragm flattens.
  - Lungs expand.
  - Ribs move outwards.
- What is the **CORRECT** order of the activities from the first to the last respectively?
- iv, ii, iii, i
  - i, ii, iii, iv
  - iv, ii, i, iii
  - i, iii, ii, iv
18. Wafula was asked by his science teacher to name the method of grazing that is most expensive. What was his answer?
- Strip grazing
  - Stall feeding
  - Paddock grazing
  - Tethering
19. Milk can be preserved by doing all the following **EXCEPT**
- refrigeration
  - boiling
  - pasteurisation
  - smoking
20. The following are units used for measuring mass **EXCEPT**
- kilograms
  - newtons
  - tonnes
  - grammes
21. The following are harmful animals **EXCEPT**
- termites
  - wasps
  - mosquitoes
  - bees
22. What is the importance of fibre in a diet?
- It builds the body.
  - It has nutritive value.
  - It helps the body to get rid of waste products.
  - It has the same value with water.
23. On a see-saw a small girl can lift a big girl when
- the big girl moves closer to the fulcrum.
  - the two move equal distance.
  - the small girl moves closer to the fulcrum.
  - the two interchange positions.



24. The following foods can be used to prevent the bending of bones in legs **EXCEPT**  
 A. fish                      B. chapati  
 C. green vegetables      D. liver

25. There are many ways of heat transfer. We receive heat from the sun through  
 A. convection  
 B. convection and radiation  
 C. conduction  
 D. radiation

26. The following represents the effects of heat on matter



Which processes are represented by letters i and iii respectively?

- A. Evaporation and freezing.  
 B. Melting and evaporation.  
 C. Melting and condensation.  
 D. Evaporation and melting.
27. At about what age do teeth begin to grow in a child?  
 A. Six months              B. Four months  
 C. Nine months          D. Six years
28. A seed has many parts with their functions. In which part is food stored in a maize seed?  
 A. Cotyledon              B. Embryo  
 C. Endosperm              D. Seed leaf
29. Which one of the following words is the term meant for splitting of light?  
 A. Refraction              B. Dispersion  
 C. Spectrum                D. Reflection
30. Which of the following is **NOT** a characteristic of all animals  
 A. they all reproduce  
 B. they all remove waste from their bodies.  
 C. they all die.  
 D. they all give birth
31. When an object is thrown up in the air it falls because it is  
 A. resisted by air      B. pulled by the earth  
 C. as heavy as air      D. exerting pressure

32. The following are modes of transmitting HIV **EXCEPT**

A. sharing a book  
 B. blood transfusion  
 C. open wounds  
 D. sharing cutting tools

33. Four pupils carried packed lunch as shown below:

*Rachael: Arrowroots, milk, meat*

*Tom: Potatoes, rice, cabbages, orange*

*Julia: Chapati, meat stew, egg*

*Hassan: Ugali, sukumawiki, meat, pawpaw*

Among the above pupils who carried a balanced diet?

A. Julia                      B. Rachael  
 C. Hassan                  D. Tom

34. The following are physical changes in adolescence for boys and girls. Which one is for both boys and girls?

A. Enlargement of breast.  
 B. Appearance of pimples on the face.  
 C. Hips broaden.  
 D. Shoulders and chest broaden.

35. Which of the following activities below is carried out **LAST** when modelling the solar system?

A. Draw circles on the manilla paper to show orbits.  
 B. Paste the manilla paper on the softboard.  
 C. Model the planets and the sun.  
 D. Mount the planets to the orbit.

36. The **BEST** method to use when controlling weeds in a large scale farm is

A. using herbicides  
 B. digging out  
 C. uprooting  
 D. mulching

37. The following are recreational uses of water **EXCEPT**

A. surfing.  
 B. boat rafting.  
 C. watching aquatic animals.  
 D. cooling heavy machines.



38. Which of the following is **TRUE** about gases? They  
A. have definite volume.  
B. have definite mass.  
C. occupy no space.  
D. have definite shape.

39. The following are signs of a disease.

- i) Vomiting.
- ii) Severe abdominal pains.
- iii) Diarrhoea with mucus.
- iv) Dehydration.

Which disease is described above?

- A. Dysentery                      B. Bilharzia
- C. Cholera                         D. Typhoid

40. Which one of the following materials is **LEAST** required in preparation of conserved feeds?

- A. Fodder crops                  B. Concentrates
- C. Grass crops                   D. Legume crops

41. The following are features of certain types of clouds.

- i) Appear like bundles of cotton.
- ii) Dark grey in colour
- iii) White in colour
- iv) Mountainous in shape.

Which pair of features are for clouds that indicate fair weather?

- A. ii and i                         B. iii and iv
- C. ii and iv                       D. iii and i

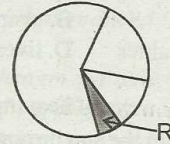
42. Which of the following plants has the same root system as maize?

- A. Onion                          B. French beans
- C. Acacia                         D. Avocado tree

43. Which of the following statements is **CORRECT** about use of medicines?

- A. All drugs are medicines.
- B. Follow the doctor's prescription.
- C. Share the remainder with friends.
- D. Avoid taking vitamin supplements.

44. The chart below represents the composition of air.



The part shaded R is used in

- A. photosynthesis    B. electric bulbs
- C. making proteins   D. germination

45. Class six pupils of Gathera Primary School were asked to model the solar system. Which planets should they put as the 3rd and 5th from the sun respectively?

- A. Mars and Jupiter   B. Earth and Saturn
- C. Earth and Jupiter   D. Jupiter and Earth

46. A lump of soil was put in a glass container. Water was poured into the container and bubbles were seen rising in water. It is **TRUE** to say that

- A. bubbles came from the heat generated between soil and water.
- B. bubbles came from convectional current in water.
- C. bubbles came from particles contained in the water.
- D. the bubbles were those of air trapped between the soil particles.

47. The working of an air thermometer is on the principle of

- A. air exerts pressure.
- B. air expands on heating.
- C. air contracts on heating.
- D. air has mass.

48. All the following animals are vertebrates **EXCEPT**

- A. rabbit                              B. fish
- C. slug                                 D. lizard

49. Which one of the following tools is **MOST** suitable for making holes for posts?

- A. Straight edged panga   B. Jembe
- C. Forked jembe            D. Curved panga

50. The materials which allow light to pass through them but we cannot see through them clearly are known as

- A. transparent                  B. oparent glass
- C. opaque                         D. translucent