

SCIENCE PAPER

CLASS FIVE

2015

AVAILABLE ONLINE AT:

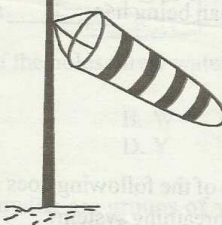
Schools Net Kenya Consultancy

P.O. Box 8076 – 00200 Nairobi, Kenya | Tel: +254202319748

E-mail: infosnkenya@gmail.com | www.schoolsnetkenya.com

SCIENCE

Time: 1 hour 40 minutes

1. Mineral salts and water are absorbed in which part of the digestive system?
 - A. Stomach
 - B. Liver
 - C. Large intestine
 - D. Small intestine
2. Which type of clouds bring heavy rainfall?
 - A. Coloured
 - B. Cumulus
 - C. Stratus
 - D. Nimbus
3. The exchange of gases takes place in the
 - A. air sacs
 - B. lungs
 - C. trachea
 - D. bronchi
4. Plants are mainly divided into
 - A. food and beverages
 - B. food and cash crops
 - C. oil and food crops
 - D. cash and fibre crops
5. The moon has different _____ and sizes at different times of the month.
 - A. shapes
 - B. movements
 - C. faces
 - D. colours
6. The first set of 20 teeth that grow in the mouth of a child are _____ teeth.
 - A. children
 - B. milk
 - C. dental
 - D. permanent
7. Roots perform the following functions in a plant **EXCEPT**
 - A. absorption
 - B. storage
 - C. support
 - D. photosynthesis
8. 

The instrument shown is a weather instrument. It is used to

 - A. show the strength of wind
 - B. show the amount of rainfall
 - C. show the temperature
 - D. show the speed of wind
9. The heat in our bodies comes from
 - A. the sun
 - B. the electricity
 - C. food we eat
 - D. air we breath
10. In which stage of HIV infection is a person likely to test negative?
 - A. Symptomatic
 - B. Incubation
 - C. Window
 - D. Full blown
11. One of the following is **NOT** a special sound. Which one is it?
 - A. Ambulance siren
 - B. A hooting car
 - C. Screaming
 - D. Laughter
12. Medicines that are given in order to prevent diseases are known as
 - A. curatives
 - B. vitamins
 - C. vaccines
 - D. pain killers

13. The following happens in the nose
EXCEPT

A. exchange of gases
B. warming of air
C. cleaning of air
D. moisturing air

14. A human being has _____ senses.

A. 4
B. 5
C. 6
D. 3

15. Which of the following does not form part of the breathing system?

A. Nose
B. Trachea
C. Diaphragm
D. Pancreas

16. It is advisable to use when removing food remains between our teeth

A. dental floss
B. tooth pick
C. stick
D. wires

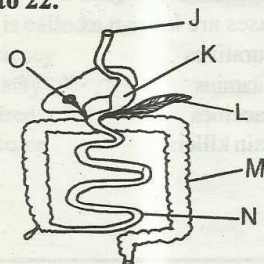
17. Which one of the following soils will make the longest ribbon when used in modelling?

A. Dry soil
B. Clay soil
C. Sand soil
D. Loam soil

18. _____ is NOT a cereal crop.

A. Coconut
B. Maize
C. Millet
D. Sorghum

Use the diagram shown below to answer question 19 to 22.



19. In which part is digested food absorbed?

A. J
B. K
C. N
D. M

20. Pancreas is labelled as letter

A. J
B. L
C. O
D. N

21. The part marked 'o' is the

A. stomach
B. duodenum
C. ileum
D. liver

22. The tube that runs from the mouth to the anus is

A. human tube
B. small intestines
C. alimentary canal
D. large intestines

23. Which one of the following is a source of heat?

A. Wood
B. Torch
C. Glow worm
D. Gas

24. Cutting tools should be maintained regularly by

A. sharpening
B. greasing
C. storing
D. repairing

25. A person who is infected with HIV is said to be

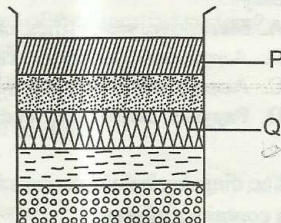
A. HIV negative
B. HIV positive
C. AIDS victim
D. outcast

26. Which one of the following materials can be used to model the stars and moon in the sky?

A. Cotton
B. Coloured pencil
C. Manila paper
D. Foil paper

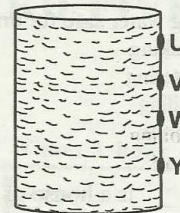
27. The **main** function of leaves in green plants is to
- store food
 - lose water
 - make food
 - support the plant

Use the diagram shown to answer the question.



28. Std 4 pupils put soil in a bottle, added water and shook the mixture. They then let it settle for some time. They observed the layers formed. The layer marked P is likely to be
- humus
 - clay
 - water
 - gravel
29. The correct unit for measuring rainfall is
- millilitre
 - millimetres
 - kilometres
 - centimeter
30. The date before which medicine should be used is known as
- delivery date
 - supply date
 - expiry date
 - manufacturing date
31. The green colouring matter in plants is called
- flower
 - stomata
 - photosynthesis
 - chlorophyll
32. Which one of the following should **NOT** be shared?
- Razor blades
 - Toilet seats
 - Beds
 - Spoons

33. The diagram below shows an investigation on liquids.



Which of the holes threw water closest to the tin?

- V
 - W
 - U
 - Y
34. The following are groups of vegetables. Which group is made up of vegetables with swollen parts buried in the soil?
- Turnips, carrots, radishes
 - Lettuce, cabbage, turnips
 - Tomatoes, egg plants, capsicums
 - Turnips, radishes, capsicum
35. Brushing our teeth helps our teeth by all the following **EXCEPT**
- prevents tooth decay
 - removes food particles
 - allow the teeth to decay
 - gives one fresh breath
36. Clouds are usually grouped according to all the following **EXCEPT**
- colour
 - size
 - shape
 - appearance
37. I am a weed. I produce a very bad smell and when I am eaten by a dairy cow, I end up destroying the cows milk. I am
- double thorn
 - sodom apple
 - mexican marigold
 - wandering jew
38. Bubbles in heated water shows the presence of
- minerals
 - animals
 - air
 - soil

39. Which one of the following is a way of making water safe for drinking?

- A. Shaking
- B. Filtering
- C. Boiling
- D. Storing

40. A _____ is a house of a rabbit.

- A. web
- B. kennel
- C. shed
- D. hutch

41. A farmer has a large farm. Which method of weed control is the **BEST** for him?

- A. Using chemicals
- B. Uprooting
- C. Burning
- D. Digging them out

42. Three characteristics are common in all living things **EXCEPT**

- A. they all die
- B. they all move
- C. they all feed
- D. they all reproduce

43. Cereals include foods such as

- A. arrow roots and vegetables
- B. millet and bean
- C. maize and sorghum
- D. yams and maize

44. Animals that hide in their shells when touched are

- A. snail and tortoise
- B.ameleon and hedgehog
- C. coackroach and snail
- D. millipede and centipede

45. The ability of the body to defend itself against diseases is called

- A. deficiency
- B. immunity
- C. acquired
- D. syndrome

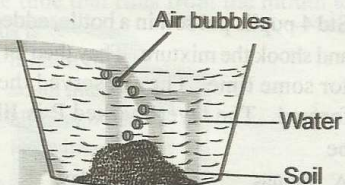
46. Animals that feed on meat only are called

- A. vegetarians
- B. herbivores
- C. carnivores
- D. omnivores

47. Which of the following contain water plants **only**?

- A. Mangrove, water lilies, cactus
- B. Arrowroots, palm tree, carrot plant
- C. Acacia, papyrus, palm tree
- D. Papyrus, arrowroot, reeds

48. The diagram below shows a lump of soil in a container of water.



We can learn from the above diagram that

- A. there are living things in the soil
- B. there is humus in soil
- C. soil has water
- D. soil has air

49. From which direction is wind blowing if the arrow head of a wind vane points East?

- A. South
- B. East
- C. West
- D. North

50. Which one of the following is **NOT** a fungi?

- A. Mushroom
- B. Mucor
- C. Moss
- D. Toad stool