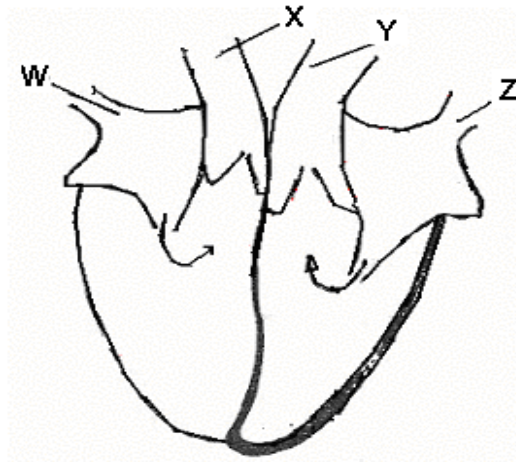


Model Revision Test 1

- Which one of the following is not a function of placenta?
 - To allow passage of dissolved food materials to the embryo
 - To protect the embryo from shock
 - To prevent harmful materials from reaching the baby
 - To allow exchange of gases between the mother and the embryo
- Which one of the following statements is NOT true about all arteries?
 - They carry blood away from heart
 - They have thick walls
 - Blood pressure in them is high
 - They carry blood rich in oxygen
- Digestion of food does not take place in the?
 - Small intestines
 - Large intestines
 - Stomach
 - Mouth
- The diagram below represents a human heart.



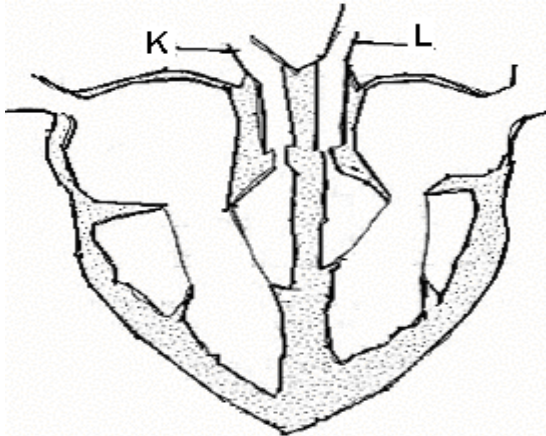
Which one of the following is represented by blood vessels W,X, Y and Z?

- | | | |
|-------------------------------|----------------------|--------------------|
| A. Aorta (W) | Vena cava (X) | Pulmonary vein (Y) |
| Pulmonary artery (Z) | | |
| B. Pulmonary artery(W) | Aorta (X) | Vena cava (Y) |
| Pulmonary artery (Z) | | |
| C. Pulmonary vein (W) | pulmonary artery (X) | Vena cava (Y) |
| Aorta (Z) | | |
| D. Vena cava (W) | Pulmonary artery (X) | Aorta (Y) |
| Pulmonary artery (Z) | | |

- Which of the following is a function of rectum?
 - Absorbs digested food

- B. Stores undigested matters
- C. Completes digestion of food
- D. Absorbs water

6. The function of haemoglobin in the blood is to?
- A. Cause clotting of blood
 - B. Fight germs
 - C. Transport food substances
 - D. Combine with oxygen
7. Which one of the following is formed first after fertilization?
- A. Sex cell
 - B. Embryo
 - C. Zygote
 - D. Foetus
8. Which one of the following waste materials is not a product of excretion?
- A. Carbon dioxide
 - B. Urine
 - C. Sweat
 - D. Faeces
9. The diagram below represents a section of heart.



- Which one of the following statements is true?
- A. K has valve while L has no valves
 - B. carries blood into the heart whereas L takes it out
 - C. carries deoxygenated blood whereas L carries oxygenated blood
 - D. has no valves whereas L has valves
10. Which one of the following correctly shows the path taken by urine from kidney?

- A. Urethra → Bladder → ureter
- B. Ureter → urethra → bladder
- C. Ureter → bladder → urethra
- D. Urethra → bladder → ureter

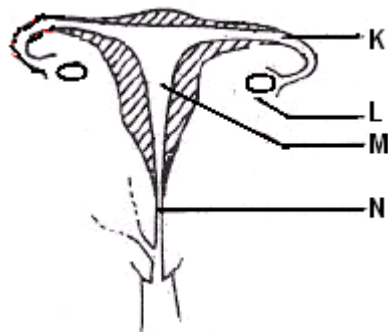
11. Sweat gland in the skin of human body are located in the?

- A. Oil glands
- B. Dermis
- C. Pores
- D. Epidermis

12. Which of the following parts of human body produces urine?

- A. Urethra
- B. Ureter
- C. Kidney
- D. Bladder

13. The shown diagram represents the reproductive system of a female human body.



Fertilization takes place in part labeled?

- A. N
- B. L
- C. M
- D. K

14. The following are some of the physical changes that take place during adolescence.

- i. Hips become broader
- ii. Chest and shoulders become broader
- iii. Pimples may appear on the face
- iv. Voice breaks
- v. Pubic hair grows

Which one of the changes takes place in girls?

- A. (i) (ii) (v)
- B. (i) (iii) (v)
- C. (ii) (iv) (v)
- D. (i) (ii) (iv)

15. Which one the following is NOT CORRECTLY matched with its function?

<i>Part</i>	<i>Function</i>
-------------	-----------------

- | | |
|---------------------|-----------------------------|
| A. Oesophagus | passage of food |
| B. Small intestines | completes digestion of food |
| C. Stomach | mixes food with enzymes |
| D. Large intestines | completes digestion of food |

16. Which one of the following is not correct statement about reproduction in human beings?

- A. Fertilization takes place in uterus
- B. Menstruation stops during pregnancy
- C. The blood of mother and foetus do not mix
- D. The zygote gets implanted in the walls of uterus

17. The blood vessel through which deoxygenated blood flows to the heart is called?

- A. Pulmonary artery
- B. Aorta
- C. Vena cava
- D. Pulmonary vein

18. Which of the following changes takes place during adolescence in boys only?

- A. Release of sex cells
- B. Fast body growth
- C. Chest and shoulders become broader
- D. Growth of pubic hair

19. Absorption of water in human being alimentary canal takes place in the?

- A. Duodenum
- B. Small intestines
- C. Stomach
- D. Large intestines

20. Which of the following is not an excretory organ?

- A. Lung
- B. Skin
- C. Kidney
- D. Rectum

21. When breathing in, the

- A. Diaphragm flattens
- B. Volume of chest decreases
- C. Lungs shrinks
- D. Diaphragm becomes dome shaped

22. Which of the following components of blood is involved in clotting after injury?

- A. Plasma
- B. Red blood cells
- C. White blood cells
- D. Platelets

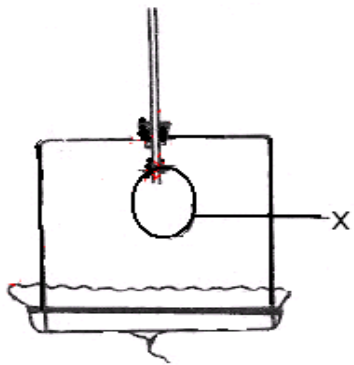
23. Which of the following shows the correct order of the blood flow in the heart?

- A. Vena cava → pulmonary artery → pulmonary vein → aorta
- B. Aorta → pulmonary vein → vena cava → pulmonary artery
- C. Pulmonary vein → aorta → pulmonary artery → vena cava
- D. Pulmonary artery → vena cava → pulmonary vein → aorta

24. Which of the following is not correct statement about foetus?

- A. Waste product are removed through the placenta
- B. The blood of the mother and of foetus mix
- C. Receives blood through placenta
- D. Receives food substances through mother blood

25. The diagram below represents a model that can be used to demonstrate breathing of human beings.



The part labeled X represent

- A. Ribs
- B. Lungs
- C. Chest
- D. Diaphragm

26. Bile mixes with food in the?

- A. Small intestine
- B. Duodenum
- C. Large intestine
- D. Stomach

27. The table below shows parts of human digestion system and their functions.

Part	Function
Small intestine	Absorption of water
Stomach	Y
X	Absorption of water

Which one of the following represents X and Y?

- | | |
|---------------------|----------------------------|
| X | Y |
| A. Oesophagus | passage of food |
| B. Large intestines | digestion of food |
| C. Rectum | storage of undigested food |
| D. Mouth | taking in food |

28. Which one of the following about blood circulation is TRUE?

- A. Aorta receives oxygenated blood from the left auricle
 - B. Pulmonary vein takes oxygenated blood to the lungs
 - C. Pulmonary artery receives deoxygenated blood from the right ventricle
 - D. Oxygenated blood from lungs is received by aorta
-