

NANDI COUNTY MOCK EXAMS

STANDARD 8 - YEAR 2019

SCIENCE

READ THESE INSTRUCTIONS CAREFULLY

TIME: 1 HR 40 MIN

1. You have been given this question paper and a separate answer sheet. The question paper contains 50 questions.
2. Do any necessary rough work in this paper.
3. When you have chosen your answer, mark it on the ANSWER SHEET, not in this question paper.

HOW TO USE THE ANSWER SHEET

4. Use an ordinary pencil only.
5. Make sure that you have written on the answer sheet:

YOUR INDEX NUMBER

YOUR NAME

NAME OF YOUR SCHOOL

6. By drawing a dark line inside the correct numbered boxes mark your full Index Number (i.e. School Code Number and the three-figure Candidate Number) in the grid near the top of the answer sheet.
7. Do not make any marks outside the boxes.
8. Keep the sheet as clean as possible and do not fold it.
9. For each of the questions 1-50 four answers are given. The answers are lettered A, B, C, D. In each box only **ONE** of the four answers is correct. Choose the correct answer.
10. On the answer sheet the correct answer is to be shown by drawing a dark line inside the box in which the letter you have chosen is written.

Example:

In the Question Paper:

16. The following are ways of maintaining strong teeth except _____

- A. eating lots of cakes, sweets and biscuits
- B. eating sugarcane, carrots and oranges
- C. eating eggs, drinking milk
- D. visiting a dentist

The correct answer is (A) (Eating lots of cakes, sweets and biscuits)

On the answer sheet:

12 (A) (B) (C) (D) 20 (A) (B) (C) (D) 30 (A) (B) (C) (D) 41 (A) (B) (C) (D) 48 (A) (B) (C) (D)

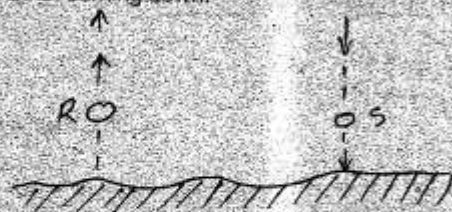
In the Third set, the box with the letter A printed in it is marked.

11. Your dark line **MUST** be within the box.
12. For each question **ONLY ONE** box is to be marked in each set of four boxes.

This Question Paper consists of 50 Printed Questions

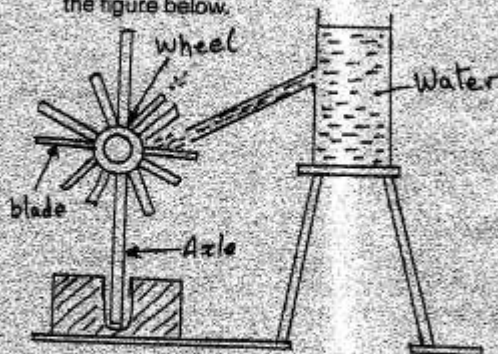
TURN OVER

1. The diagram below shows two objects one going up after being thrown and the other coming down.



Which one of the following is a **CORRECT** statement about the two positions?

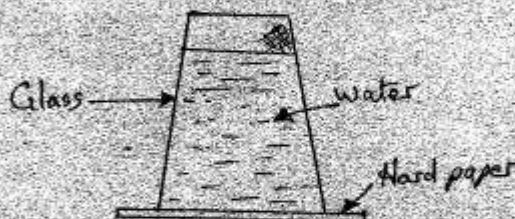
- A. R is gaining potential energy and losing kinetic energy while S is losing kinetic and gaining potential energy.
 - B. R is losing potential energy and gaining kinetic energy as S gains potential and loses kinetic energy.
 - C. S is losing potential energy and gaining kinetic energy as R loses kinetic and gains potential energy.
 - D. Both objects are gaining potential energy and losing kinetic energy.
2. The weakened form of a disease causing organism is called:-
- A. Germs
 - B. Vaccine
 - C. Bacteria
 - D. Protozoa
3. Water is used to drive a wheel as shown in the figure below.



Which one of the following changes will **NOT** increase the speed of rotation of the wheel?

- A. Sharpening the bottom end of the axle.
- B. Using lighter blades.
- C. Increasing the amount of water in the container.
- D. Making the axle longer.

4. A glass which was completely filled with water was covered with a piece of hard paper and then inverted as shown below.



The water did not pour because:-

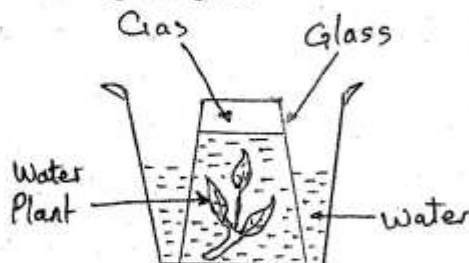
- A. Pressure inside was less than pressure outside.
 - B. Pressure outside was greater than pressure inside.
 - C. Pressure inside and outside was equal.
 - D. The water pulled the paper upwards.
5. Which one of the following parts of a flower is neither male and female?
- A. Petal
 - B. Anther
 - C. Style
 - D. Stigma
6. Which one of the following is the **hottest** planet also referred to as the evening star?
- A. Venus
 - B. Pluto
 - C. Jupiter
 - D. Mercury
7. The purpose of salt in food preservation is to:-
- A. Add flavour
 - B. Remove water
 - C. Remove air
 - D. Lower the temperature
8. Kibunjia was wearing a T-shirt labelled MIRROR. Which one of the following shows the correct image of the word when he stood in front of a plane mirror?



A. WIBBOB C. ЯOЯЯIM

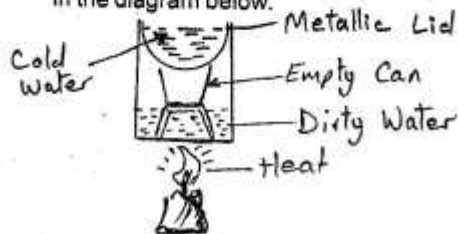
B. ЯOЯЯIW D. MIRROR

9. Class six pupils of Kanjora primary school set up an experiment during the day as shown below. They then left the set - up for some time after which they observed a gas collecting in the glass.



Which one of the following process is the gas likely to be used for?

- A. Photosynthesis.
B. Extinguishing fire
C. Adding nutrients to the soil by some plants.
D. Burning
10. Nduriri was driving along a road in his car. A child runs out in front of him. He applies his brakes and comes to a sudden stop. In what direction does his body tend to move when the brakes are first applied?
A. Forwards B. From right to left
C. Backwards D. From left to right
11. The part of the breathing system which is kept open by hard C-shaped rings is the:-
A. Air sacs B. Trachea
C. Oesophagus D. Bronchus
12. Which one of the following groups of animals are **correctly** classified?
A. Bee, beetle and scorpion
B. Grasshopper, cockroach and moth
C. Moth, butterfly and tick.
D. Spider, weevil and flea
13. Some pupils set up an experiment as shown in the diagram below.



Which one of the following observations would not be noted in the experiment?

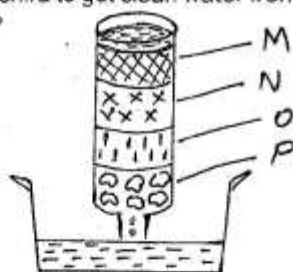
- A. Some droplets would be formed under the lid.
B. There would be pure water in the can.
C. The cold water would become warm.
D. The amount of dirty water would not change.
14. The ability of a type of soil to allow water to pass through it is known as:-
A. soil capillarity
B. drainage
C. Water retention ability
D. Soil texture
15. Two candles were balanced with one candle on a metre rule as shown in the diagram below. The candles were then lit at the same time.



If all the candles were burning at the same rate, which of the following observations is **CORRECT**?

- A. The metre ruler tilted towards the side with two candles.
B. The metre ruler tilted towards the side with one candle.
C. The set-up remained balanced.
D. The two candles burnt for a longer time
16. Class seven matched the following parasites to their effects on the animals. Which one did they match **wrongly**?
A. Tapeworms Liver bleeding
B. Fleas Skin irritation
C. Mites Skin damage
D. Round worms Swollen belly
17. Which of the following statements are **TRUE** about the heart?
(i) The heart has four chambers
(ii) The auricles pump blood out of the heart
(iii) The ventricles receive blood into the heart
(iv) The left ventricle is connected to the aorta
(v) The right auricle is connected to the venacava
A. i, iv, and v B. i, ii, iii, iv and v
C. iv and v D. ii and iii

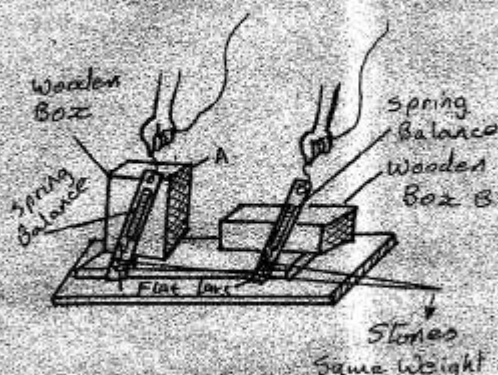
18. Which of the following animals will be **mostly** affected by water pollution?
 A. Chameleon B. Kangaroo
 C. Fish D. Frog
19. Which one of the following **DOES NOT** pollute river water?
 A. Releasing treated sewage water into the river.
 B. Spraying of crops with pesticides.
 C. Cultivating along river banks
 D. Use of fertilizers in the farm
20. Which one of the following **DOES NOT** function the same way as bicycle dynamo when used to produce electricity?
 A. Hydro electric generator
 B. Car battery
 C. Diesel generator
 D. Wind driven turbines
21. The diagram below shows a method used by Wachira to get clean water from muddy water?



What materials make up the parts labelled **M, N, O** and **P** respectively.

- A. Fine sand, coarse sand, charcoal and pebbles
 B. Pebbles, coarse sand, fine sand, charcoal
 C. Fine sand, Charcoal, coarse sand, pebbles
 D. Coarse sand, fine sand, pebbles, charcoal
22. In which of the following levers is load at the centre?
 A. Crowbar B. Spade
 C. Wheelbarrow D. Claw hammer
23. Which one of the following is **NOT** an adaptation of plants in wet areas?
 A. Thin cuticle
 B. Flexible stems
 C. Increased number of stomata
 D. Thick cuticle
24. Which one of the following is **NOT** an example of organic refuse?
 A. Food left overs
 B. Vegetable peelings
 C. Fruits peelings
 D. Broken glass
25. Which one of the following statements is **INCORRECT**?
 A. Legumes are sources of proteins.
 B. Carbohydrates are energy giving foods.
 C. Breast milk is a balanced diet
 D. Babies can easily digest cow's milk
26. Which one of the following weeds develops small yellow flowers and produces a very strong unpleasant smell especially when cut?
 A. Oxalis B. Blackjack
 C. Wandering jew D. Mexican marigold
27. Which one of the following is a natural way of lighting a house? Using a
 A. Candle
 B. Transparent roof
 C. Torch
 D. Hurricane lamp
28. The shiny outer surface of a spoon makes our faces appear
 A. Facing up B. Small
 C. Facing down D. Unique
29. Which one of the following statements about sweat glands is **NOT** correct? They
 A. Are located in the epidermis
 B. Are surrounded by blood capillaries.
 C. Produce salts and water.
 D. Store sweat.
30. The following are descriptions of types of beaks:-
 (i) Long slender (ii) Long serrated
 (iii) Short conical (iv) Strong curved
 Which types of beaks are for grains eaters and nectar feeders respectively?
 A. iv and ii B. iii and i
 C. iii and ii D. i and iv
31. Which one of the following practices would **NOT** prevent food poisoning? To
 A. Ensure food stores have a mesh
 B. Check expiry date of the product.
 C. Warm left over food before storage.
 D. Allow frozen foods to thaw.

32. The diagram below was used to investigate how an inclined plane makes work easier.



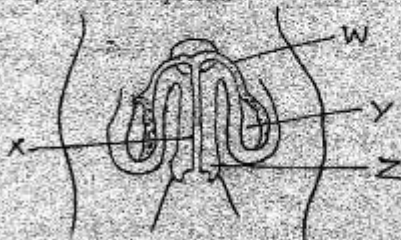
Which one of the following is **CORRECT** about the set up?

- A. Slope A is more gentle than B.
 B. The stone is pulled a longer distance on A.
 C. Same effort was used to pull the stones.
 D. Less effort is used to pull stone B.
33. Which one of the following should **NOT** be done when caring for and supporting people with HIV/AIDS?
- A. Share meals with them.
 B. Wash their beddings.
 C. Kiss them.
 D. Hold them.
34. The following are characteristics of a crop pest. It _____
- (i) Is black with no wings
 (ii) Can reproduce rapidly without laying eggs
 (iii) Has mouth parts which pierce leaves and stalks.
 (iv) Sucks plant juices
- Which one of the following pests has the above characteristics?
- A. Aphid
 B. Maize stalk borer
 C. Weevil
 D. Termite
35. Which one of the following groups consists of the major non living components of the environment?
- A. Soil and light
 B. Animals and plants
 C. Rocks and wind
 D. Air and water

36. Which one of the following is a compound fertilizer?

A. Triple super phosphate.
 B. Diammonium phosphate.
 C. Calcium Ammonium Nitrate.
 D. Muriate of potash.

37. The diagram below represents the male reproductive system.



Which part is not labelled **correctly**?

Part	Name
A. W	Sperm duct
B. X	Ureter
C. Y	Testis
D. Z	Penis

38. The following are signs and symptoms of water borne diseases:-

(i) Stool looks like rice water.
 (ii) Fever
 (iii) Severe headache
 (iv) Skin becomes dry and inelastic
 (v) Ulcers develops on walls of the intestines

Which signs are for typhoid?

A. i, iii and iv
 B. i, iii and v
 C. i, iv and v
 D. ii, iii and v

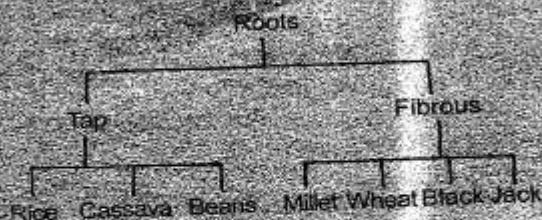
39. Which one of the following nutrients is necessary for the control of body functions in an animal?

A. Minerals
 B. Proteins
 C. Carbohydrates
 D. Fats and oils

40. Which one of the following stage of HIV infection does a patient get secondary infections?

A. Symptomatic stage.
 B. Window period
 C. Full blown
 D. Incubation period

41. Which plants are wrongly classified in chart below?



- A. Cassava and millet
 B. Beans and wheat
 C. Cassava and blackjack
 D. Rice and blackjack
42. Which one of the following types of food is matched correctly with the nutrients it contains?
- | Food | Nutrients |
|-----------------|---------------|
| A. Sweet potato | Proteins |
| B. Ghee | Fats and oils |
| C. Carrot | Mineral |
| D. Egg yolk | Vitamin |
43. The following are steps followed by pupils when constructing a windvane
- Find the balancing point of the wood.
 - Make a stand using timber, wires and plastic
 - Cut triangular and square shapes using a metal sheet or plastic
 - Fix the square and triangular shapes on light wood
 - Make a hole at the top of stand and fix the windvane
- Which one of the following shows the correct order in which the steps were followed?
- A. I, ii, iii, iv and v
 B. v, iv, iii, ii and i
 C. iii, iv, ii, i and v
 D. ii, iii, v and iv
44. Which one of the following is a long term effect of loud sound on people?
- A. Deafness
 B. Irritation
 C. Lack of sleep
 D. Lack of concentration

45. Which one of the following materials would be **LEAST** suitable to use on a handle of a frying pan?

A. Rubber
 B. Steel
 C. Wood
 D. Glass

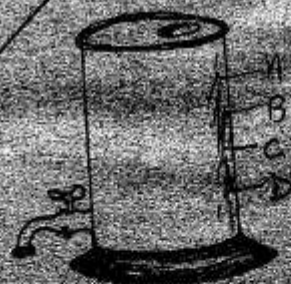
46. Which one of the following is the **CORRECT** number of teeth a child has by the age of 3 years?

A. Ten
 B. Twenty four
 C. Twelve
 D. Twenty

47. Which one of the following animals is matched correctly with the way it reacts to danger in the environment?

Animal	Reaction
A. Slug	Crawls away
B. Caterpillar	Coils
C. Hedgehog	Pretends to be dead
D. Cockroach	Fly away

48. The diagram below represents a concrete tank. Which part of the wall should be the thickest?



49. Which one of the following would show that a very sick person is being taken to hospital?

A. A car hooting
 B. A bell ringing
 C. A car with siren on
 D. People screaming

50. Which one of the following substances would form a homogeneous solution?

A. Water and fresh milk
 B. Fresh milk and kerosene
 C. Kerosene and cooking oil
 D. Water and cooking oil