

KCPE SOLUTION 2018

Standard Eight

SCIENCE

1. Which one of the following parts is **correctly** matched to its function?

Part	Function
A. Uterus	– Fertilization
B. Trachea	– Traps dust and germs
C. Small intestine	– Absorption of water
D. Ventricles	– Receiving blood

2. Which of the following **correctly** represents the path taken by carbon dioxide out of the body?

- A. Air sac → bronchioles → bronchus → trachea → nose
 B. Alveoles → trachea → nose → bronchioles → bronchus →
 C. Air sacs → bronchus → bronchioles → trachea → nose
 D. Nose → bronchioles → bronchus → air sacs → trachea

3. The function of platelets in the blood is to:-

- A. cause clotting of blood
 B. combine with oxygen
 C. transport nutrients
 D. fight germs

4. The vaccines given at 6th week after birth protects an infant against:-

- A. measles and diphtheria
 B. poliomyelitis and pertussis
 C. tetanus and malaria
 D. tuberculosis and bilharzia

5. Which one of the following is a social effect of abusing alcohol?

- A. Impaired judgment
 B. Withdrawal
 C. Unconsciousness
 D. Accidents

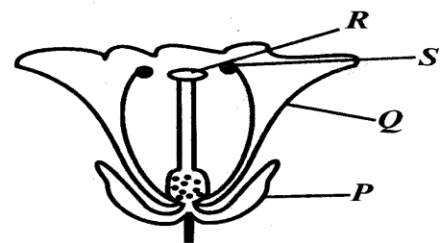
6. Which of the following groups only consists of flowering plants?

- A. Moss, Avocado, Cedar
 B. Fern, Beans, Grass
 C. Kales, onion, Sisal
 D. Grass, Banana, pine

7. Which parts of the bean seed remain above the ground after germination?

- A. Testa and endosperm
 B. Endosperm and cotyledon
 C. Cotyledon and plumule
 D. Radical and plumule

8. The diagram below represents parts of a flower.

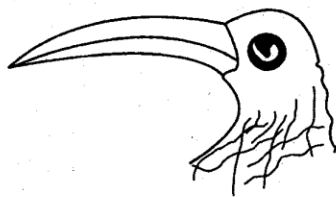


Which letters represent parts that protect flower in bud stage and the one which function the same way as testis in animals **respectively**?

- A. P and Q
 B. R and S
 C. P and R
 D. P and S

9. Which one of the following characteristics of a maize plant helps in its polination?
- Sticky stigma
 - Scented
 - Loosely attached anthers
 - Coloured petals

10. The diagram below represents a beak of a certain bird.



The bird **mostly** feeds on:-

- insects
 - nectar
 - grains
 - fish
11. Under which one of the following weather conditions would clothes dry **fastest**?
- Sunny and Windy
 - Hot and Windy
 - Windy and humid
 - Calm and dry
12. Which one of the following materials would be **most** suitable to use to model the orbits in a solar system model?
- Pin
 - Glue
 - Wire
 - Cellotape

13. Which one of the following components of the environment produces oxygen?
- Animals
 - Plants
 - Soil
 - Air

14. Which **one** of the following forms of soil erosion is **mainly** caused by water and wind?
- Sheet
 - Splash
 - Gulley
 - Rill

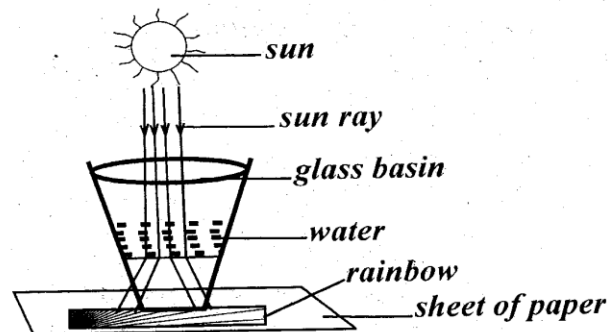
15. Which one of the following statements is **not** true about inorganic manure? It:-
- supply specific nutrients
 - causes soil erosion
 - do not improve soil structure
 - is also called direct manure

16. Which one of the following need **not** be the same when comparing drainage in different types of soil?
- Size of the funnel.
 - Amount of cotton.
 - Time allowed for the experiment.
 - Size of collecting jars.

17. The importance of water in the human diet is to help in the:-
- absorption of nutrients
 - absorption of minerals
 - digestion of food
 - prevention of constipation

18. A child was advised to eat foods such as milk, porridge made from millet and omena. Which one of the following diseases can be prevented by eating the above foodstuff?
- Rickets
 - Kwashiorkor
 - Marasmus
 - Anaemia
19. The purpose of dipping a piece of cloth in cold water in food preservation is to:-
- remove air
 - increase surface area for evaporation
 - absorb heat rays
 - insulate food
20. The **main** reason why breast feeding mothers are encouraged to feed on food rich in protein is to:-
- improve the immunity of the body
 - strengthen the bones of her body
 - help produce quality breastmilk
 - replace blood lost during birth
21. Wearing gloves when handling stagnant water prevents which one of the following diseases?
- Bilharzia
 - Cholera
 - Typhoid
 - Malaria
22. Which one of the following is an advantage of soft water?
- Discolours clothes.
 - Lathers easily with soap.
 - Forms scum.
 - Forms scales.

23. The following are ways of managing inorganic industrial waste **except**:-
- incineration
 - recycling
 - converting it into manure
 - reducing generation
24. In which one of the following stages of HIV infection does a person look healthy but tests positive?
- Symptomatic
 - Asymptomatic
 - Fullblown
 - Window
25. The set up below was used to investigate a certain property of light.



- Which one of the following properties were being investigated **respectively**?
- Reflection and refraction.
 - Reflection and dispersion.
 - Making rainbow plus bending.
 - Refraction and dispersion.

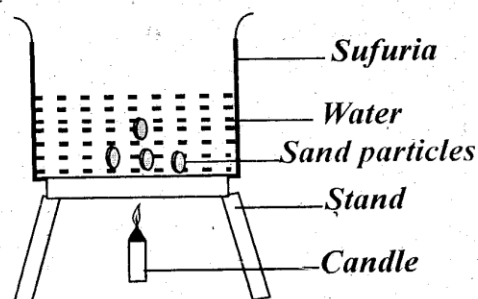
26. Which one of the following concentrates when added to other animal feeds provides minerals and vitamins?

- A. Salt licks
- B. Fish meal
- C. Bone meal
- D. Sunflower seed

27. Which of the following is **not** an effect of livestock diseases?

- A. Reduced produce
- B. Low yields
- C. Reduced yields
- D. Transmission of diseases

28. The diagram below shows water being heated in a container.



The aspect that was being demonstrated was:-

- A. convection only
- B. convection and conduction
- C. radiation and convection
- D. conduction only

29. The ability to do work is referred to as:-

- A. force
- B. energy
- C. weight
- D. push or pull

30. Which one of the following energy changes takes place when a candle is lit?

- A. Chemical \longrightarrow Heat \longrightarrow Light
- B. Heat \longrightarrow Light \longrightarrow Sound
- C. Potential \longrightarrow Light
- D. Chemical \longrightarrow Light \longrightarrow Heat

31. Which one of the following processes absorbs **most** heat from the surrounding?

- A. Melting
- B. Condensation
- C. Evaporation
- D. Freezing

32. Which one of the following is a reason why a soda bottle is **likely** to break if put in a freezer?

- A. Sudden expansion of the bottle.
- B. Sudden contraction of the bottle.
- C. Contraction of soda liquid in the bottle.
- D. Contraction of the bottle with soda.

33. Which two components makes about 21% of volume of air?

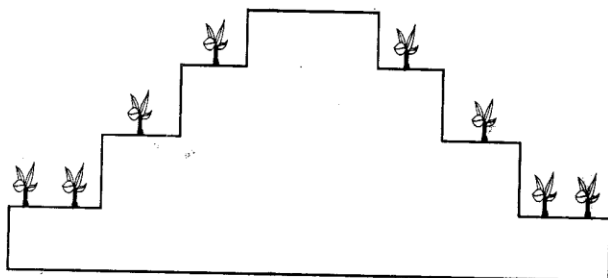
- A. Carbon dioxide and nitrogen.
- B. Oxygen and inert gases.
- C. Nitrogen and oxygen.
- D. Carbon dioxide and oxygen.

34. Which one of the following pairs consists **only** of materials that can be attracted by a magnet?

- A. Glass and silver coin.
- B. Pin and razor blade.
- C. Steel and brass.
- D. Copper and aluminum.

35. In which of the following units is weight expressed?
- Newton
 - Force
 - Kilograms
 - Grams
36. Which one of the following methods of reducing friction reduces contact of the surfaces?
- Use of rollers.
 - Streamlining
 - Smoothing
 - Use of grease and oil
37. Which one of the following pairs of levers have effort, fulcrum and load in the same position?
- Spade and crowbar.
 - Wheelbarrow and claw hammer.
 - Crowbar and claw hammer.
 - Claw hammer and spade.
38. Which one of the following simple machines make work easier by changing the direction of the force applied?
- Inclined plane
 - Flag post
 - Lever
 - Spade
39. All simple tools should be:-
- sharpened before use
 - washed
 - used for the right purpose
 - used all the time
40. Which one of the following pests causes damage to crops by boring holes on grains?
- Cutworm
 - Aphid
 - Weevils
 - Army worm
41. Which one of the following parts of cactus plants make food?
- Stem
 - Leaf
 - Root
 - Bud
42. Which one of the following animals stays in a structure called **fold**?
- Pig
 - Goat
 - Sheep
 - Dog
43. Which one of the following internal parasites attacks **only** fish and poultry?
- Roundworm
 - Liverflukes
 - Lungworm
 - Tapeworm
44. Which one of the following adaptations helps animals to swim and fly easily?
- Presence of fins.
 - Presence of hollow bones.
 - Streamlined body.
 - Production of mucous to cover the body.

45. The figure below represents a method of soil conservation.



The method is called:-

- A. gabions
 - B. terracing
 - C. mulching
 - D. contour farming
46. Use of fertilizers in the farm is **most** likely to pollute:-
- A. soil
 - B. water
 - C. water and soil
 - D. air
47. Which of the following sources of energy is an example of renewable source of energy?
- A. Biogas
 - B. Coal
 - C. Petrol
 - D. Natural gas

48. Which one of the following planets is in the third position after Earth?

- A. Saturn
- B. Earth
- C. Jupiter
- D. Uranus

49. Which one of the following is the **best** method of controlling weeds in a nursery bed?

- A. Digging out
- B. Slashing
- C. Uprooting
- D. Use of herbicides

50. A mixture of maize flour and maize grains can **best** be separated by:-

- A. sieving
- B. filtering
- C. evaporation
- D. use of magnet