

1. You have been given this question paper and a separate answer sheet. The question paper contains 50 questions.

2. Make sure that you have written on the answer sheet.

(i) Your name (ii) Name of your school (iii) Assessment number

SCIENCE & TECHNOLOGY

1. Reflected sound is also called
A. echo B. volume
C. pitch D. melody
2. A group of learners demonstrated sources of sound. Which one is **wrong**?
A. Vibrating air
B. Vibrating strings
C. Vibrating drums
D. Still waters
3. Roma had two pieces of nail as shown in the diagram below.

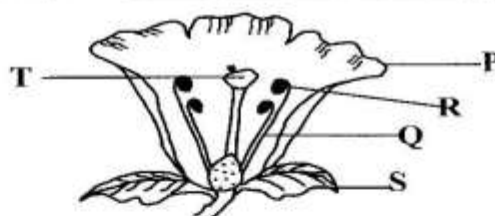


He placed the two nails in a basin full of water. They both sank. This was due to similarity in

- A. material B. size
C. weight D. shape
4. Grade Five learners improvised a floater for swimming. They used the following materials to improvise the floaters. Which one is **not**?
A. Plastic jerrican
B. Rubber jacket
C. Polythene bags
D. Metal rods
5. A ten centimetre nail sinks in water while a ten centimetre plastic ruler floats on water. It shows that _____ do not affect sinking and floating.
A. weight B. density
C. size D. shape
6. Making water dirty is called water
A. conservation
B. pollution
C. storage
D. treatment

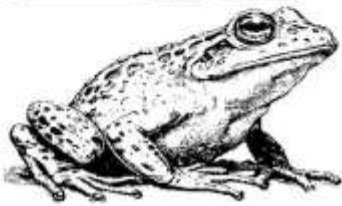
7. Rembo works in water polluted area. He can reduce the pollution by
A. building dams
B. proper waste disposal
C. cutting trees
D. using chemicals in farming
8. Which one below is a homogeneous mixture?
A. Water and sand
B. Milk and oil
C. Saw dust and maize
D. Salt and water
9. You want to separate maize flour and rice. Which is the **best** method to use to separate the mixture?
A. Winnowing B. Picking
C. Sieving D. Dissolving

The diagram below represents parts of a flower. Use it to answer questions 10, 11 and 12.



10. The female part is labelled as
A. T B. R
C. Q D. P
11. What is the function of part labelled R?
A. Produce pollen grains
B. Receive pollen grains
C. Attract insects
D. Develop into seeds
12. The petal is labelled as
A. S B. P
C. Q D. T
13. Which of the following plants is non-flowering?
A. Grass B. Blackjack
C. Mushroom D. Maize

Grade Five learners observed the vertebrate below in the school compound during Science and Technology nature wall. Use it to answer questions 14 and 15

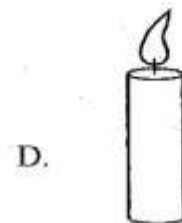
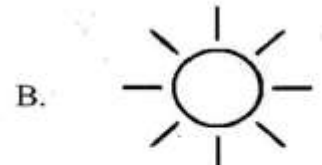


14. The animal belong to the class of
 A. mammals B. birds
 C. reptiles D. amphibians
15. The vertebrate above has the following characteristics. Which one is it?
 A. Have scales
 B. Lays eggs
 C. Produce milk
 D. Warm blooded
16. Ninja is suffering from the diseases of the breathing system. Which one is **not** among them?
 A. Malaria B. Tuberculosis
 C. Asthma D. Covid-19
17. Wamalwa grows crops whose stems are used as food. What does Wamalwa grow?
 A. Maize B. Pawpaw
 C. Sugarcane D. Yams
18. Ocholla drew a diagram of plant root. What did he draw?



19. Gundi helped a pregnant sheep give birth. What characteristics of animals did the sheep show?
 Animals
 A. die B. reproduce
 C. feed D. breathe

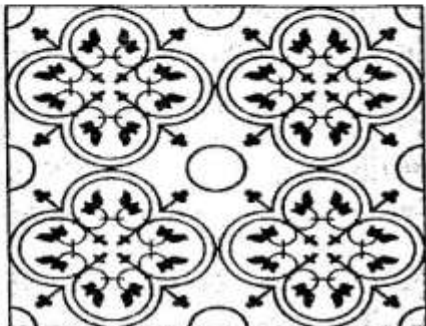
20. Maina collected samples of invertebrates during Science and Technology nature study. He is likely to have collected samples of
 A. lizards
 B. frogs
 C. snake
 D. ladybirds
21. Hamsa, a Grade Four learner drew diagram of the **main** source of light on Earth. What did Hanisa draw?



22. We can use heat for the following **except**
 A. taking photographs
 B. cooking food
 C. ironing clothes
 D. drying cereals
23. The type of force that makes objects thrown up fall down is known as
 A. mass
 B. tension
 C. gravity
 D. friction
24. Nyanumb observed decomposing wastes in the classroom. She observed the following wastes **except**
 A. waste papers
 B. food remains
 C. plastic bottles
 D. dry leaves
25. The following are states of matter. Which one is **not**?
 A. Liquids B. Gas
 C. Solids D. Dust

SECTION B : AGRICULTURE

Cheleugat is cleaning the surface shown in the picture below. Use it to answer question 26 and 27



26. The surface is called
A. glass surface
B. tiled surface
C. cemented surface
D. wooden surface
27. To clean the surface, you need the following materials and tools. Which one is **not**?
A. Mop
B. Soft-broom
C. Hard brush
D. Soap
28. Collins explained to his group members why we should live in a clean environment. Which one is **true**? To
A. prevent diseases
B. causes illness
C. feel uncomfortable
D. bring sadness
29. Briana wanted to buy dress to attend her sister's wedding. He should consider the following factors **except**
A. comfortability
B. current fashion
C. weight
D. occasion
30. The following is a good grooming practice. Which one is it?
A. Unkempt hair
B. Shaggy dress
C. Unpolished shoes
D. Combed hair

31. Tony cooked the food item in the picture below



The **best** method for cooking the food was

- A. boiling
B. deep frying
C. stewing
D. roasting
32. Munka wanted to prepare fatty beef for lunch. Which method would he use?
A. Dry fat frying
B. Boiling
C. Baking
D. Deep frying
33. A Grade One learner was suffering from certain nutritional deficiency disease with the following signs and symptoms
i. Protruding stomach or Pot-bellied
ii. Thin-weak brownish hair
The learner is suffering from
A. marasmus
B. anaemia
C. kwashiorkor
D. goitre
34. Zeddy wanted to cook the food item below



What nutrients are found in the food item?

- A. Proteins
B. Water
C. Vitamins
D. Carbohydrates
35. Punda mentioned the function of vitamins and minerals in the body. What is the function he mentioned?
A. Protected body against diseases
B. Repair worn out tissues
C. Provide energy for the body
D. Prevent constipation
36. The following are cereals found in the locality. Which one is **not**?
A. Wheat
B. Peas
C. Maize
D. Sorghum
37. Your grandmother has harvested maize. He can preserve the maize grains by using the following methods **except**
A. sun-drying
B. keep in air tight containers
C. put in water
D. use ash

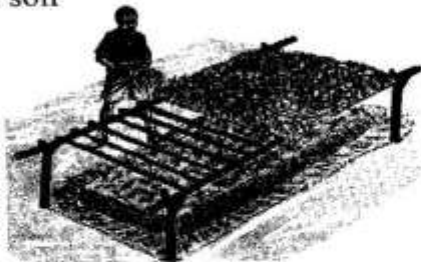
38. The following domestic animals give us meat **except**

A. cat B. pig
C. camel D. goat

39. Jael matched domestic animals and their uses. Which one is **correctly** matched?

Animal	Use in food production
A. Bees	Provide meat
B. Donkey	Produce honey
C. Rabbit	Transport farm produce
D. Cat	Scaring rodents

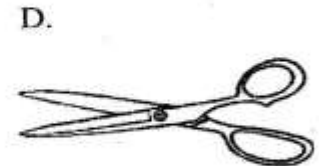
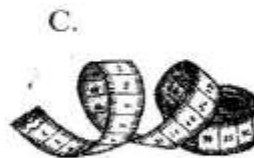
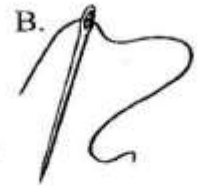
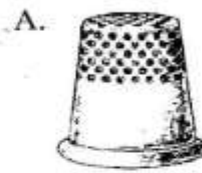
40. What time of the day should transplanting of vegetables be done?
A. At mid-day
B. Late in the evening
C. During hot sunny day
D. On a windy day
41. Pelsia wants to prepare a nursery bed. She should practice the following gardening practices. Which one is **not**?
A. Weeding B. Thinning
C. Harvesting D. Watering
42. Njoki wanted to prepare a spray to repel wild animals in her garden. She will prepare the spray from which plant?
A. Wandering Jew B. Hot pepper
C. Pig weed D. Oxalis
43. Njoro used the method below to conserve water in soil



The method used is called

- A. cover cropping B. training
C. shading D. mulching
44. Mike made an organic waste pit at home. Which one below is an organic waste he used?
A. Polythene bags
B. Metal chip
C. Saw dust
D. Plastic bottles

45. The following are needlework tools. Which one is a thimble?



46. When sweeping, Grade Four learners did the following. Which one is **wrong**?
A. Sprinkle water before sweeping
B. Wear a white official shirt
C. Wear dust mask
D. Open windows while sweeping
47. Chumwa put on the personal protective equipment shown below



It is used for

- A. protecting our hands
B. protecting our clothes from stains
C. protecting our eyes
D. protecting our heads
48. The following list contain a healthy diet. Which one is it?
A. Chicken, rice, kales
B. Yams, cabbages, ugali
C. Bread, soda, milk
D. Chips, soda, biscuits
49. Brown collected pictures of examples of poultry. Which one is **not** one of the pictures?
A. Geese B. Duck
C. Ram D. Turkey
50. The following are crops that can be established directly sowing of tiny seeds. Which one is it?
A. Maize B. Beans
C. Wheat D. Millet