

**READ THESE INSTRUCTIONS CAREFULLY**

1. You have been given this question paper and a separate answer sheet. The question paper contains 30 questions.
2. Make sure that you have written on the answer sheet.

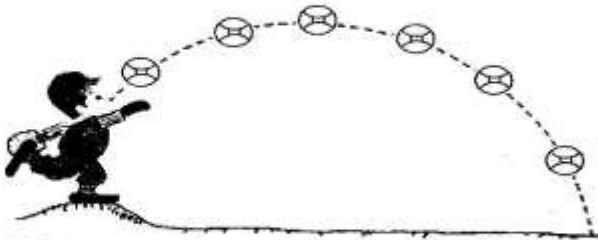
(i) Your name

(ii) Name of your school

(iii) KNEC Assessment Number

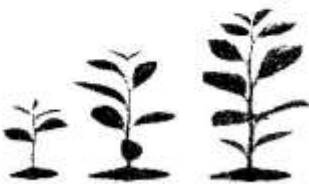
**SECTION A: SCIENCE & TECHNOLOGY**

1. Nyoro threw a ball in air as shown.



What type of force made the ball fall down?

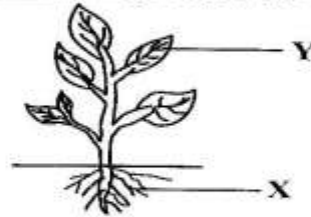
- A. Friction
  - B. Mass
  - C. Inertia
  - D. Gravity
2. Heat transfer occurs from the
    - A. cooler body to the hotter body
    - B. hotter body to the cooler body
    - C. hotter body to the hotter body
    - D. cooler body to the cooler body
  3. The **main** source of heat on the earth is called the
    - A. sun
    - B. moon
    - C. stove
    - D. firewood
  4. Alice uses heat in the following ways **except**
    - A. drying grains
    - B. keeping body warm
    - C. cooling the body
    - D. ironing clothes
  5. Remy observed the characteristic of plants below in their kitchen garden.



It shows that plants

- A. grow
- B. feed
- C. die
- D. breathe

**The diagram below represents the parts of a plant.**  
**Use it to answer questions 6 and 7.**



6. The part labelled X is called
  - A. leaf
  - B. stem
  - C. flower
  - D. root
7. The function of the part marked Y is to
  - A. absorb water
  - B. produce seeds
  - C. support plant
  - D. make plant food
8. Pabgo explained why plants die. Why do plants die?
  - A. Presence of water
  - B. Plenty of food
  - C. Lack of water
  - D. Shading
9. The following are wastes removed by plants **except**
  - A. excess water
  - B. food made
  - C. dry leaves
  - D. gum
10. The picture below shows a certain characteristic of animals.



It shows that animals

- A. breathe
  - B. grow
  - C. feed
  - D. move
11. Melna saw an animal with backbone. Which animal did she see?
    - A. Tortoise
    - B. Locust
    - C. Spider
    - D. Bee

12. The following are protective clothing you can wear when observing and handling animals. Which one is **not**?

A. Overcoat  
B. Necklace  
C. Gloves  
D. Gumboots

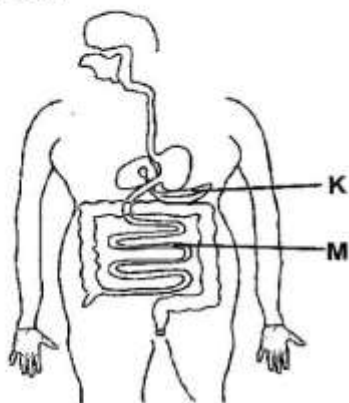
13. Sombe made a portfolio of invertebrates. The portfolio contained pictures of

A. millipede  
B. snake  
C. lizard  
D. bat

14. The process of breaking down the food we eat into smaller pieces that our body can use is known as

A. digestion  
B. egestion  
C. chewing  
D. excretion

The diagram below represents the human digestive system. Use it to answer questions 15 and 16.



15. The part marked **K** is called

A. liver  
B. pancreas  
C. gall bladder  
D. duodenum

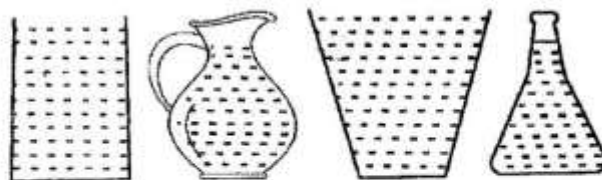
16. The main function of the part labelled **M** is

A. chewing food  
B. food mixes with gastric juice  
C. absorption of water  
D. absorption of digested food

17. The three states of matter include the following **except**

A. gas  
B. solid  
C. liquid  
D. water

18. Grade Four learners were investigating a certain property of liquids as shown below



It shows that liquids

A. have definite shape  
B. have definite mass  
C. do not have definite shape  
D. have definite volume

19. Which one of the following is a solid?

A. Oil  
B. Steam  
C. Salt  
D. Juice

20. A Grade Four learner collected wastes that can be recycled. Which one is **wrong**?

A. Plastic wastes  
B. Wood shavings  
C. Pieces of wire  
D. Pieces of broken glass

21. Gadies was asked to collect solid waste at home. She observed the following safety measures **except**

A. wash hands after handling wastes  
B. use gloves  
C. use gumboots  
D. carry wastes with bare hands

22. All the following are methods of managing different types of waste in our environment **except**

A. recycling  
B. re-using  
C. reducing  
D. burning

23. Force that opposes motion is called

A. gravity  
B. friction  
C. weight  
D. mass

24. You can light a room naturally by

A. opening windows during daytime  
B. closing window and doors  
C. switching on electric bulbs  
D. lighting candle

25. The following are sources of heat **except**

A. the sun  
B. electricity  
C. the moon  
D. charcoal burner

## **SECTION B: AGRICULTURE**

**Lucy constructed the structure below in her farm.**

**Use it to answer questions 26 and 27.**



26. What is the name of the structure?

- A. Scarecrow
- B. Birds feeding table
- C. Safe trap
- D. Toy

27. The structure above is used to

- A. attract animals
- B. keep off animals
- C. make farm beautiful
- D. feed animals

**A Grade Four learner found the wild animal below destroying crops in the school garden. Use it to answer questions 28 and 29.**



28. The animal above feeds on

- A. green maize
- B. nuts
- C. flowers
- D. cereals in store

29. The animal above is known as

- A. squirrel
- B. mole
- C. rabbit
- D. monkey

30. The following can be used to make compost manure. Which one is **not**?

- A. Maize stalk
- B. Waste papers
- C. Broken pieces of glass
- D. Grass

31. When doing drip irrigation, you can use the following. Which one is it?

- A. Watering can
- B. Basins
- C. Plastic bottles
- D. Buckets

32. Which method below in farming conserves water?

- A. Sprinkler irrigation
- B. Drip irrigation
- C. Watering can irrigation
- D. Basin irrigation

33. We should use \_\_\_\_\_ to wet the tip of a thread in order to thread the needle easily.

- A. water
- B. saliva
- C. soil
- D. cooking oil

**Mambo used the following personal protective equipment. Use it to answer questions 34 and 35**



34. The personal protective equipment above is called

- A. gloves
- B. gumboots
- C. hat
- D. headgear

35. The protective equipment shown above is used to protect the

- A. hands
- B. head
- C. feet
- D. nose

36. You can make the cleaning tool in the picture below by using



- A. tuff grass
- B. plastic bottles
- C. old clothes
- D. old jerricans

37. When dusting a surface you should use  
 A. gumboots  
 B. gloves  
 C. masks  
 D. headgear
38. We can make clean water safe for drinking by  
 A. warming under the sun  
 B. boiling  
 C. adding salt  
 D. storing in pots
39. Achieng went for a long call. What should she do after leaving the latrine?  
 A. Bathe the whole body  
 B. Wash the face  
 C. Wash the legs  
 D. Wash the hands
40. Keeping yourself and your surrounding clean is called  
 A. sanitation  
 B. grooming  
 C. hygiene  
 D. disposal
41. Shallow frying can be used to cook  
 A. eggs  
 B. sweet potatoes  
 C. maize  
 D. chips
42. Ndeti cooked the food item in the picture below



It is cooked by

- A. deep frying  
 B. shallow frying  
 C. boiling  
 D. grilling
43. Morine collected the food items namely; meat, fish and green grams. The food items belong to the  
 A. protective foods  
 B. body building foods  
 C. fibre foods  
 D. energy giving foods

44. Members of Putri's family eats balanced diet. What foods did they eat?  
 A. Bananas, peas, fish  
 B. Bread, rice, eggs  
 C. Chapati, beans, ugali  
 D. Chicken, spinach, ugali
45. A goat provides us with chevron while a bull provides us with  
 A. beef  
 B. mutton  
 C. bacon  
 D. pork
46. A farmer can take care of fruits in the farm by doing the following **except**  
 A. weeding  
 B. pruning  
 C. harvesting  
 D. watering
47. Rukai planted tiny seeded crops in his farm. He planted the following crops. Which one is it?  
 A. Tomatoes  
 B. Maize  
 C. Wheat  
 D. Carrots
48. The diagram below shows a certain type of fuel in use.



The type of fuel in use is called

- A. firewood  
 B. gas  
 C. charcoal  
 D. paraffin
49. We can conserve firewood by  
 A. using dry firewood  
 B. using wet firewood  
 C. putting fire in direct wind  
 D. leave firewood lighting after cooking
50. We eat meat to  
 A. provide body protection  
 B. provide body building  
 C. protect the body  
 D. give fibre to prevent constipation