

### Assessment Rubric

	Marks	Exceeds Expectations	Meets Expectations	Approch Expectations	Below Expectations
Environmental Activities	20				
R.E	10				

#### 1. Match body parts and their use



Smelling



Hearing



Seeing



Walking



Clapping

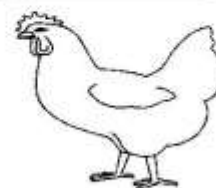
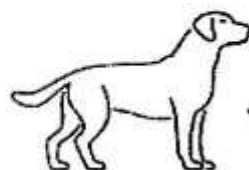
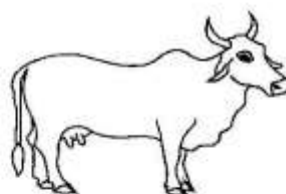
#### 2. Draw the foods we eat

banana	bread
ugali	chapati

#### 3. Why do we eat food?(Orally)

#### 4. Name two clothes we wear.

#### 5. Name the domestic animals



(duck, cow, hen, cat, dog)

6. A cow has \_\_\_\_\_ legs. (3, 4)

7. Fish lives in \_\_\_\_\_ (soil, water)

#### 8. Read and draw

Father	Orange

*Reprinted from Kenya Curriculum Framework for Early Childhood Education*

### CRE

1. We should \_\_\_\_\_ for God's creation. (care, destroy)
  2. Draw and name four God's creation.
- |  |  |
|--|--|
|  |  |
|  |  |
3. We read the word of God from the \_\_\_\_\_ (storybook, Bible)
  4. \_\_\_\_\_ built the Ark. (Joseph, Noah)
  5. During Christmas, we celebrate the birth of \_\_\_\_\_. (Joseph, Jesus)
  6. \_\_\_\_\_ came to see baby Jesus. (Pastors, Wise men)
  7. Draw baby Jesus
- 

### IRE

1. Read the words.

لَ كُ سَ دَ

هَ حَ

2. Write the letters.

حَ حَ حَ

ثَ ثَ ثَ

3. Put Kasra vowel on the letter.

بَ

4. \_\_\_\_\_ created my family members. (Allah(S.W.T), Father)

5. I use my  \_\_\_\_\_ for seeing. (eyes, nose)

6. Name the pictures



(Ears, Legs, Hands)

(CBC) ENVIRONMENTAL & R.E ACTIVITIES PP2