

Name _____
School _____

Assessment No. _____
Date _____

Instructions: This paper consists of two section A and B

TIME: 1HR. 20MIN

Section A : (20mks)





- When practising for the music festivals, teacher Andrew asked the girls in the choir to sing using low voices and the boys to sing using higher voices. Identify the element of music that he was testing.
A. Rhythm B. Melody
C. Tone D. Pitch
- Musical instruments that are playing by hitting are known as
A. drums B. percussion instruments
C. fiddles D. melodic instruments
- When playing a descant recorder Adrian observed the following:
(i). Closed the back hole using the left-hand thumb finger
(ii). Closed the first three holes using the index, middle and ring fingers of the left hand
(iii). Blew gently into the mouth piece
Identify the note that he produced
A. Note B B. Note G
C. Note A D. Note C
- The following is the scale of C-major. Study it and identify the missing notes.
C D _____ F G _____ B C
A. E and A B. A and E
C. G and A D. C and A
- Study the following Kodaly hand signs and identify their sol-fa syllables.



- do, mi, re, do
- do, do, do, mi, re, re, do
- mi, mi, mi, do, re, re, mi
- fa, fa, fa, do, re, re, fa

- Identify the rest of the following note value.



- | | |
|--|--|
| A.  | B.  |
| C.  | D.  |

- During a painting lesson, Kimani wanted to lighten the blue coloured paint. He added a white paint to create a shade of light blue. This process is known as
A. tinting
B. diluting paint
C. shading
D. tonal gradation
- Teacher Cillah asked Grade Four learners to come with items for improvising wax crayons. Who among the following came with an item that was **not** used?
A. Bottle tops
B. Recycled candle wax
C. Coloured pigments
D. Wooden sticks
- Which of the following is **not** a dry media used in drawing of forms?
A. Paint
B. Pencil
C. Charcoal sticks
D. Chalk

10. Grade Seven learners were asked to draw still life forms. Who among the following made a **wrong** drawing?

- A. **Idah** - drawing of football balls
- B. **Sandra** - drawing of players playing football
- C. **Komora** - drawing a jug placed on the table
- D. **Kimotho** - drawing of fruits in a bowl

11. During a painting lesson, Ojwang'i wanted to create a green paint from a set of primary coloured paints that he had. What could he have done to create the desired paint?

- A. Added all the primary coloured paints
- B. Mixed the blue paint and the yellow paint
- C. Mixed the red paint to the yellow paint
- D. Mixed the yellow paint and the purple paint

12. Study the following picture and identify the method used to create the item.



- A. Collage
- B. Mosaic
- C. Montage
- D. Crayon etching

13. The following are decoration methods. Which one is applied when decorating a javelin?

- A. Applique
- B. Tie and dye
- C. Smoking
- D. Burnishing

14. Grade Seven learners were making a flipbook with a scenic background. Which of the following items was **not** needed?

- A. Pocket book
- B. Pencils
- C. Scissors
- D. Toothpick

15. Study the following image and identify the football skill being executed.



- A. Foot trap
- B. Instep kicking
- C. Dribbling
- D. Shooting

16. How are goals scored in a game of handball?

- A. By shooting the ball into the goal posts using a foot
- B. By throwing the ball into the opponent's goal area.
- C. By bouncing the ball repeatedly on the ground.
- D. By jumping off the ground and throwing the ball to a teammate who is near a goal post.

17. Identify the second step in the long jump sail technique.

- A. Take-off
- B. Approach
- C. Flight
- D. Landing

18. Grade Seven learners were improvising relay batons. Which of the following collected an item that was **not** used?

- A. **Ryan** - bamboo sticks
- B. **Ivan** - aluminium
- C. **Patience** - wood
- D. **Joy** - recycled paper

19. Lyam was asked to make a team that would play in the volleyball game. How many learners did he get to play with him in the team?

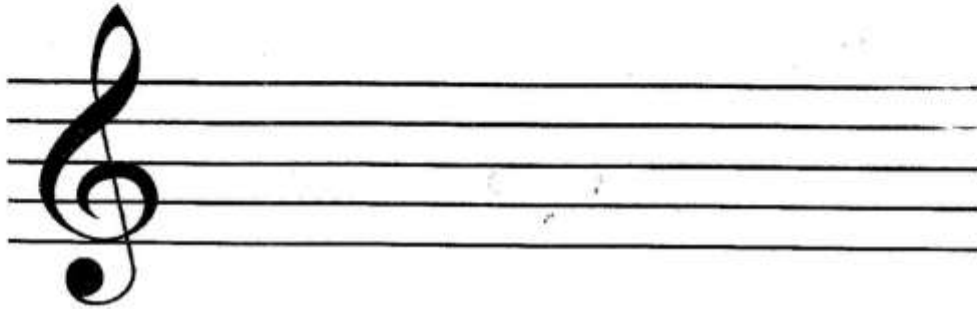
- A. Four
- B. Five
- C. Six
- D. Seven

20. Identify the **last** phase executed when throwing a javelin.

- A. Carry
- B. Follow through
- C. Release
- D. Cross over

SECTION B: (30mks) Answer all questions

21. The following is a treble staff. Indicate the notes on the lines. (5 marks)



22. On the space provided below, write a four-bar rhythmic pattern in $\frac{2}{4}$ time. (4 marks)

23. During the scouts' competitions, the Moi-Forces Scout's brass band played the East African Anthem using the musical instruments only. This type of music is known as _____ (1 mark)

24. Imagine that you are telling a story to an audience with visually impaired people. List two storytelling techniques you will employ to ensure that they enjoy the story. (2 marks)

(i). _____

(ii). _____

25. List three elements of a story. (3 marks)

(i). _____

(ii). _____

(iii). _____

26. Define balance as applied in drawing. (2 marks)

27. On the space provided below, draw a rounders bat and indicate dark parts by smudging. (4 marks)



28. List **two** warm colours. (1 mark)

(i). _____

(ii). _____

29. Study the following image and identify the game played using the item. (1 mark)



30. Identify **two** games whereby the ball is passed by throwing from one player to a teammate. (2 marks)

(i). _____

(ii). _____

31. Study the following football skill and identify it. (1 mark)



32. List **two** physical activities that enhance strength. (2 marks)

(i). _____

(ii). _____

33. Identify **two** fielding skills applied in a rounders game. (2 marks)

(i). _____

(ii). _____