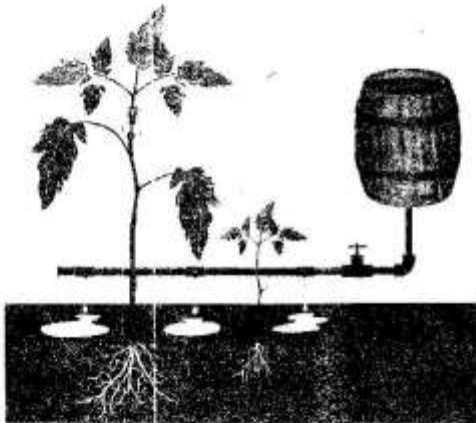


Name _____ Assessment No. _____
 School _____ Date _____

Instructions: This paper consists of two section A and B TIME: 1HR. 20MINS

SECTION A (15mks)

- During a lesson on soil components, learners observed that decayed leaves and animal wastes were part of the soil mixture. The decayed organic matter forms which soil component?
 A. Sand
 B. Clay
 C. Salt
 D. Humus
- During one of the trips, Grade 7 learners observed the following methods of irrigation:

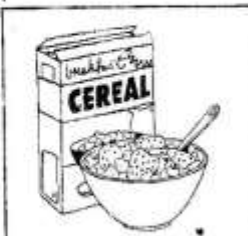


Identify the method of irrigation illustrated above.


- Overhead irrigation
- Drip irrigation
- Sprinkler irrigation
- Flood irrigation

- Mwangi needed to turn the soil in his small school garden plot before planting. Which tool is the **most** suitable for this task?
 A. Jembe B. Panga
 C. Rake D. Wheelbarrow
- Rhoda keeps a notebook where she writes down how much she spends on seeds and how much she earns from selling vegetables. What kind of a simple farm records is she keeping?
 A. Marketing records
 B. Weather records
 C. Financial records
 D. Inventory records
- In the school garden, hazardous waste were found by learners. Suggest the **best** way to dispose off this hazardous waste?
 A. Bury them directly in the garden
 B. Throw it in the hole
 C. Collect and place it in a designated hazardous waste bin
 D. Leave it at the corner of the farm
- A poultry farmer spreads sawdust on the floor of the chicken house. This material serves **mainly** as
 A. a place to birds to lay eggs
 B. bedding material to absorb moisture
 C. a source of food for the chicken
 D. a way to make the house smell nice


7. After finishing your meal, the first step when cleaning the dishes should be to
 - A. wash with soap and water
 - B. rinse with clean water
 - C. scrape off food remains into a bin
 - D. dry with a cloth
8. When preparing meals for the week, your mother writes down what she plans to cook for each day. This simple meal planning helps to ensure that
 - A. meals are expensive
 - B. everyone gets enough food
 - C. only favourite foods are cooked
 - D. food is wasted
9. After using a chopping board for cutting meat or vegetables, it is important to wash and dry the board thoroughly before using it again. This prevents
 - A. it from breaking
 - B. it from changing colour
 - C. cross - contamination of food
 - D. it from becoming blunt
10. When classifying foods, those rich in carbohydrates like maize and rice are primarily known as
 - A. body building food
 - B. protective foods
 - C. energy giving foods
 - D. roughage
11. Learners are always advised to clean houses of domestic animals. What is the primary purpose of these simple management practises?
 - A. To make animals wild
 - B. To ensure animal health and productivity
 - C. To scare away predators
 - D. To make the farm look busy
12. The practice of removing excess seedlings to avoid overcrowding is called?
 - A. Weeding
 - B. Thinning
 - C. Transplanting
 - D. Pruning
13. Which of the following is a method of soil conservation?
 - A. Burning bushes
 - B. Removing crop residues
 - C. Planting trees
 - D. Overstocking
14. What is the **main** source of vitamin C in our diet shown below?



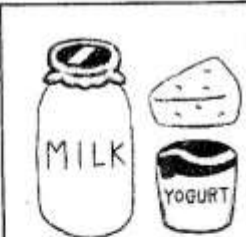
A. Cereals



B. Meat



C. Fruits and vegetables



D. Dairy products
15. All the following are cereal crops **except**
 - A. green grams
 - B. maize
 - C. oats
 - D. millet

Section B: (35mks) Answer all the questions in the spaces provided

16. Your class is preparing to establish a school garden.

(a). State **three** reasons why soil is important for growing crops in your school. (3mks)

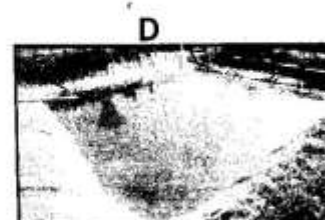
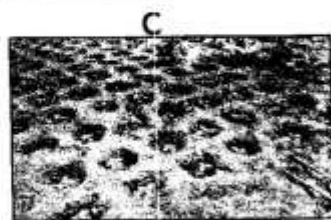
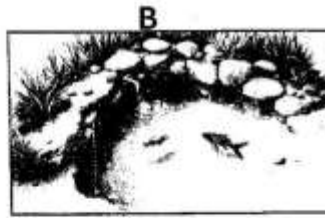
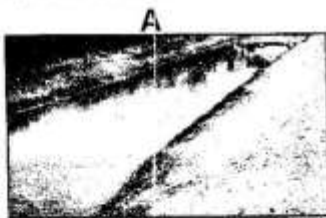
(i). _____

(ii). _____

(iii). _____

(b). During a field trip, you observed different types of soil. Name **one** type of soil common in your locality (1mk)

17. Jabali Junior School had a farm visit. They saw different water retention structures as shown below. (3mks)



Identify the above water retention structures marked A, B, C and D (4mks)

A. _____ B. _____

C. _____ D. _____

18. Your school garden is on a gentle slope, so you need to protect the soil from erosion and conserve water.

(a). Explain how placing a layer of grass on the surface (mulching) helps to conserve soil moisture. (2mks)

(b). Besides grass, list **two** other materials that can be used for mulching in your school garden. (2mks)

(i). _____

(ii). _____

19. Managing waste from the school compound and garden is important for cleanliness.

(a). Differentiate between waste materials that are organic and those that are inorganic. (2mks)

(b). Give **two** examples of inorganic waste materials you are likely to find in the school garden. (2mks)

(i). _____

(ii). _____

20. Grade 7 learners made juice from oranges harvested from the school farm. This is an example of value addition

(a). Define the term value addition (1mk)

(b). State three benefits that the school or farmer can get from adding value to farm produce like oranges. (3mks)

(i). _____

(ii). _____

(iii). _____

21. Your teacher asked you to prepare a balanced diet. Outline **two** reasons why eating a balanced diet is important for your health (2mks)

(i). _____

(ii). _____

22. Different ways of cooking vegetables affect how many nutrients are kept

(a). Name **two** cooking methods that involve cooking food in hot air or hot fat without use of water. (2mks)

(i). _____

(ii). _____

(b). Explain **three** ways you can try to keep more vitamins in vegetables when cooking them. (3mks)

(i). _____

(ii). _____

(iii). _____

23. Cleanliness is important in regards to our own health. Explain why it is important to regularly clean the compound outside your house (2mks)

(i). _____

(ii). _____

24. You noticed a small tear in your school uniform. You want to mend it using a patch.

(a). State **two** reasons why you should choose to mend the uniform instead of discarding it. (2mks)

(i). _____

(ii). _____

(b). Outline **three** basic tools and materials you would need to make a simple patch (3mks)

(i). _____

(ii). _____

(iii). _____