

Name.....

Index No. ....

School .....

**441/2**  
**CLOTHING AND TEXTILE**  
**PAPER 2**  
**PRACTICAL**  
**TIME: 2 ½ HOURS**

Kenya Certificate of Secondary Education (K.C.S.E)

*This paper consists of 4 printed pages.  
Candidates should check the question paper to ensure that all pages are printed as indicated  
and no questions are missing*

A pattern of a panel skirt

**MATERIALS PROVIDED**

1. Pattern pieces.  
A - Front  
Gore

Panel	B	-	Front
Back	C	-	Skirt
	D	-	
	Pocket		
skirt facing	E	-	Back

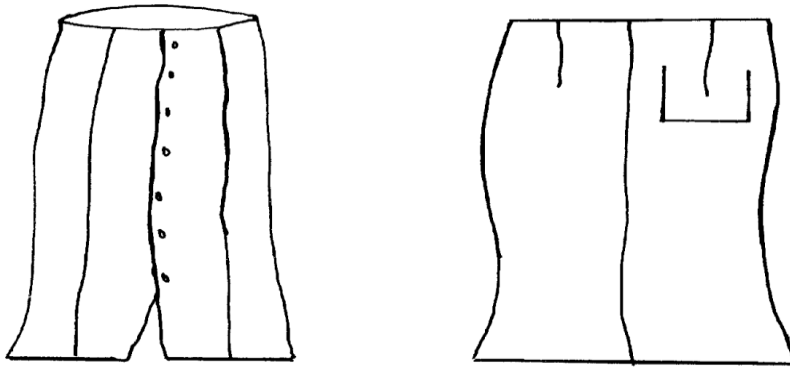
2. Light weight cotton fabric 60cm by 90cm wide.
3. iron on interfacing 40cm by 40cm.
4. Sewing cotton thread to match the fabric.
5. One large envelope.

### THE TEST

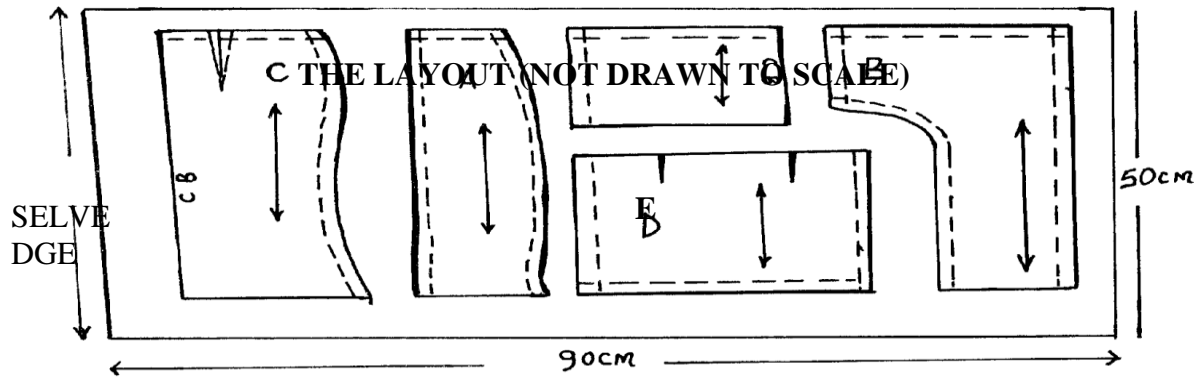
1. Cut an interfacing for the skirt facing the same shape as the facing.
2. Cut out and make up the LEFT HALF of the skirt to show the following processes:-
  - a) Making of the back dart.
  - b) Preparation of the patch pocket by making a box pleat and making the hem
  - c) Attaching the patch pocket
  - d) Joining the front skirt panel to the front
  - e) Joining the side seam using a neatend plain open seam
  - f) Joining the back waist facing to the front skirt facing
  - g) Interfacing the skirt facing using the iron On interfacing.
  - h) Neatening the free edge of the facing.
  - i) Finishing the waist edge using the interfaced. Facing and under stitching the facing.
  - j) Making the hand worked button hole
  - k) Making half of the hem using slip hemming.

At the end of the test, firmly sew on your work on a single fabric, a label bearing your name and Index number. Remove the needle and pins from your work, then fold your work neatly and place it in the envelope provided. Do not put scraps of fabric in the envelope

### SKIRT VIEW



FRONT VIEW



**END**