

# **FORM FOUR TERM ONE EXAM 2017**

**AGRICULTURE**  
Paper 2  
Time: 2 Hours

**SCHOOLS NET KENYA**  
Osiligi House, Opposite KCB, Ground Floor  
Off Magadi Road, Ongata Rongai | Tel: 0711 88 22 27  
E-mail: [infosnkenya@gmail.com](mailto:infosnkenya@gmail.com) | Website: [www.schoolsnetkenya.com](http://www.schoolsnetkenya.com)

This paper consists of 12 printed pages. Candidates should check the question paper to ensure that all pages are printed as indicated and no questions are missing

**SECTION A (30MARKS)**

*Answer all question in this section in the spaces provided*

1. Name a pig breed with the following features White body color, erect ears, dished snout, big in body size. (½mk)

.....  
.....

2. What does the term ‘**epistasis**’ mean in livestock improvement? (1mk)

.....  
.....

3. Give **four** reasons of treating timber before roofing farm buildings. (2mks)

.....  
.....  
.....  
.....  
.....

4. State **four** abnormalities of eggs that can be detected during egg candling. (2mks)

.....  
.....  
.....  
.....

5. Give **two** parasites of cattle which are also disease vectors (1mk)

.....  
.....  
.....

6. State **four** ways of minimizing disowning of lambs by ewes. (2mks)

.....  
.....  
.....  
.....

7. Name a tool used for tightening barbed wires fencing (½ mk)

.....  
.....

8. Mention **two** predisposing factors of foot rot disease in sheep (1mk)
- .....
- .....
9. State **four** advantages of hedges/live fences. (2mks)
- .....
- .....
- .....
- .....
10. (a) Define the term “Zoonotic disease” (1mk)
- .....
- .....
- (b) Give **two** examples of Zoonotic diseases (2mks)
- .....
- .....
11. Name the **three** methods of livestock selection (1 ½ mks)
- .....
- .....
- .....
- .....
12. Differentiate between the following breed terms (2mks)
- (i) Bull and Bullock
- .....
- .....
- (ii) Billy and Nanny
- .....
- .....
13. Calculate how much of wheat (35% D.C.P) would be mixed with sunflower feed cake (10% D.C.P) to come up with duck mash 20% D.C.P (3mks)
- .....
- .....
- .....
- .....
14. State **four** good qualities of honey (2mks)
- .....
- .....
- .....

.....  
.....

15. State **four** desirable features of a rabbit hutch (2mks)

.....  
.....  
.....

16. Why is it necessary to provide grit to birds (1mk)

.....  
.....

17. Name **three** dual purpose breeds of cattle (1 ½ mk)

.....  
.....  
.....

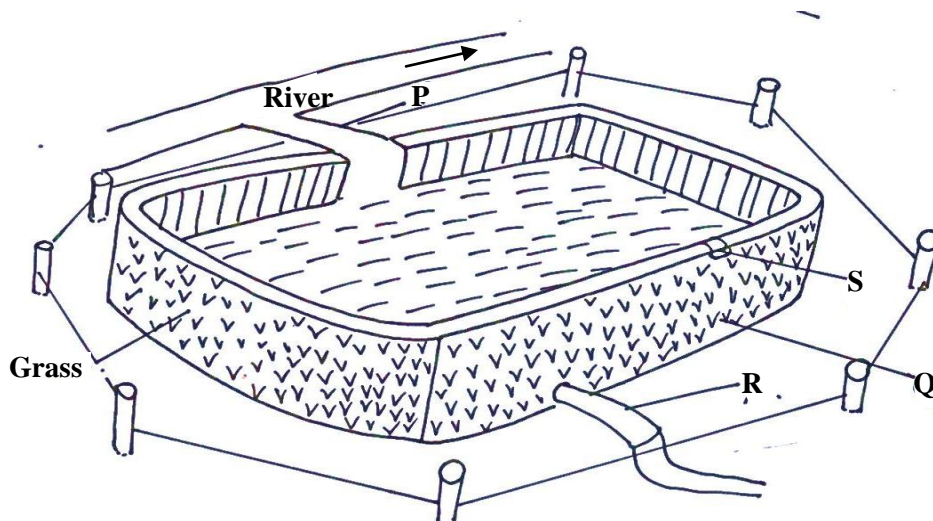
18. State **four** ways in which vaccines may be administered to animals (2mks)

.....  
.....  
.....

**SECTION B ( 20 MARKS)**

*Answer all the questions in this section in the spaces provided.*

19. Study the diagram below and answer the questions that follows



a) (i) Identify the structure above

(1/2mk)

.....  
.....

(ii) Identify the parts labelled **P, Q, R** and **S**

(2mks)

**P**.....

**Q**.....

**R**.....

**S**.....

b) What is the importance of grass on the structure

(1/2mk)

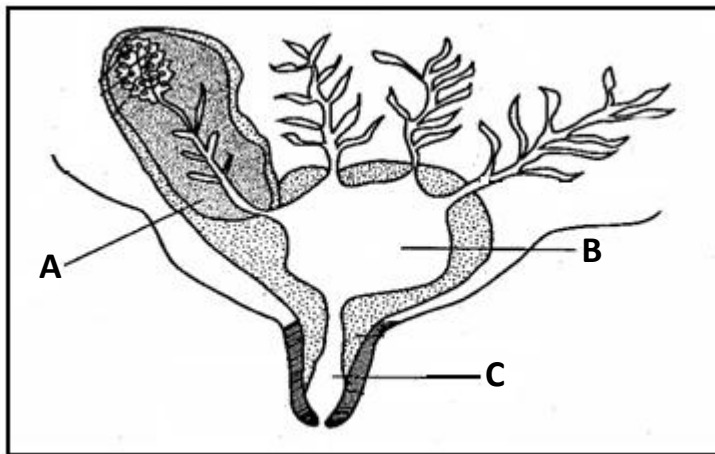
.....  
.....

c) State any **two** factors a farmer needs to consider before starting the above identified agricultural production

(2mks)

.....  
.....  
.....

20. Below is the longitudinal section of a cow's udder.



(a) Identify the parts labeled **A, B, C**.

(3mks)

**A** .....

**B** .....

**C** .....

(b) Give **four** pre-requisites of clean milk production.

(2mks)

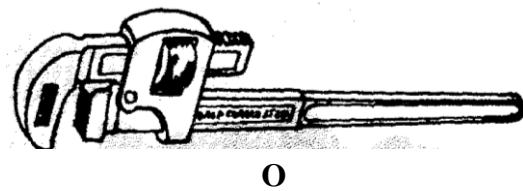
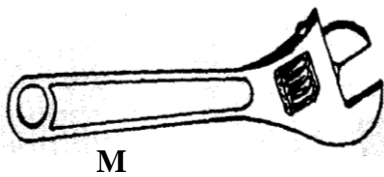
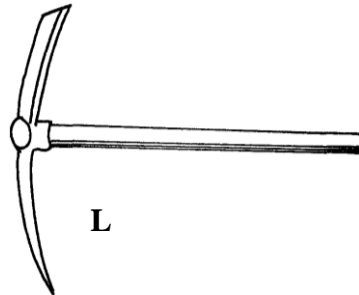
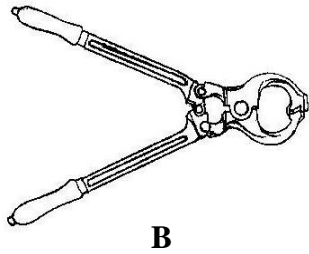
.....  
.....  
.....

(c) Outline **four** control measures against cannibalism in a group of layers

(2mks)

.....  
.....  
.....  
.....

21. Below are farm tools. Study them and answer the questions that follow.



(a) Identify the tools **B, M, N, O**

(2½mk)

**B**.....

**M**.....

**N**.....

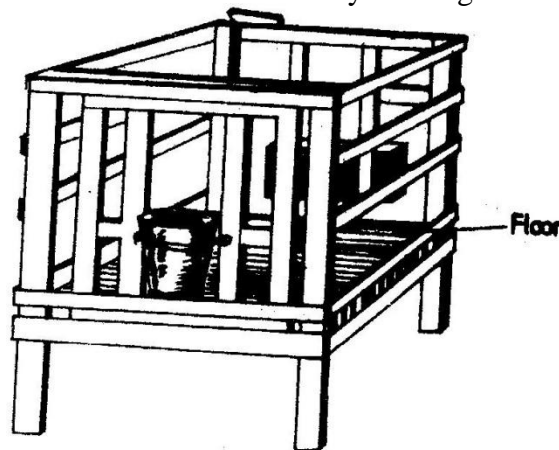
**O**.....

(b) Give **one** functional advantage of tool **M** over tool **N**

(1mk)

.....

22. The diagram below represents a farm structure. Study the diagram and answer the questions that follow.



a) (i) identify the structure

(½ mk)

.....  
.....  
(ii) Identify the type of floor. ( ½ mk)

.....  
.....  
(iii)How high should the floor be raised above the ground level? ( ½ mk)

.....  
.....  
b) (i) Give **one** reason for having the floor of the calf pen raised. (1 mk)

.....  
.....  
(ii) State **three** factors that should be considered in sitting the calf (3mks)

.....  
.....  
**SECTION C (40 MARKS)**

*Answer any TWO questions in this section in the spaces provided after last question*

23(a) Describe the management practices carried out in poultry production. (10mks)

(b) Characteristics of clean and quality milk (5mks)

(c) **Five** reason for maintaining animal healthy (5mks)

24. Describe Anthrax disease under the following headings

(a) Causal organism (1mk)

(b) Signs of infection (5mks)

(c) Control and measures (4mks)

25. (a) Describe the factors to consider when siting a beehive to prevent swarming (5mks)

(b) Sign of farrowing (5mks)

(c) Importance of lubrication system in tractor engine (2mks)

(d)Write short notes on Friesian breed of dairy cattle under the following sub headings: (8mks)

(i) Origin.

(ii) Characteristic.

.....  
.....  
.....  
.....  
.....  
.....