
**KENYA NATIONAL EXAMINATION COUNCIL
REVISION MOCK EXAMS 2016
TOP NATIONAL SCHOOLS**

**STRATHMORE SCHOOL
AGRICULTURE
PAPER 2
TIME: 2 HOURS**

SCHOOLS NET KENYA
Osiligi House, Opposite KCB, Ground Floor
Off Magadi Road, Ongata Rongai | Tel: 0711 88 22 27
E-mail: infosnkenya@gmail.com | Website: www.schoolsnetkenya.com

**STRATHMORE SCHOOL KCSE TRIAL AND
PRACTICE EXAM 2016**
Paper 2

SECTION A:

Answer all the questions in this section in the spaces provided.

1. Study the table below and fill in the missing words. (3 marks)

Description	Cattle	Pigs	Poultry
Young from birth/ hatching to weaning			Chick
Young female before first parturition / laying		Gilt	
Mature male for breeding	Bull		

2. Give **two** causes of scouring in calves. (1 mark)
3. Name one intermediate host for each of the following livestock parasites.
a) Liverfluke (*Fasciola spp*) (½ mark)
b) Tapeworm (*Taenia spp*) (½ mark)
4. Why is raddling essential in sheep management ? (1 mark)
5. State **four** limitations of using hydroelectric power on the farm. (2 marks)
6. Differentiate between the following tools.
a) Bastard file and rasp file. (1 mark)
b) Copying saw and hack saw (1 mark)
7. State **four** ways of restraining cattle during routine management. (2 marks)
8. a) Name **four** breeds of dairy goats. (2 marks)
b) Mention **two** distinguishing characteristics of the bactrian camel breed. (1 mark)
9. a) Give **four** symptoms of milk fever. (2 marks)
b) State **two** methods of controlling milk fever. (1 mark)
10. Name **four** systems of a tractor engine. (2 marks)
11. a) Give **two** reasons for using litter in a poultry house. (1 mark)
b) Name **two** diseases of poultry that are controlled by vaccination. (1 mark)

12. List **three** types of calf pens. (1 ½ mks)
13. Give **four** reasons for feeding a lamb on colostrum. (2 marks)
14. State **two** factors that would determine the width and depth of a cut-off drain. (1 mark)
15. A deep litter poultry house measures 9m x 3m. Suppose the amount of space allowed for one bird is 0.27m², calculate the number of birds that can be kept comfortably in this house. Show your working. (2 marks)

SECTION B 20 MARKS

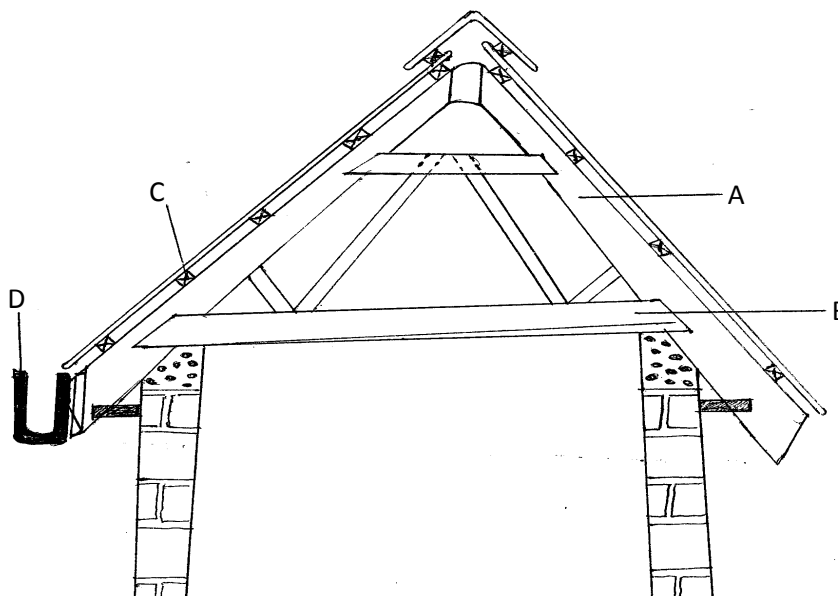
Answer all the questions in this section in the spaces provided.

16. The diagrams labelled A and B below shows the teeth arrangement in hand workshop tools.



- a) Identify the tools represented with by the teeth arrangements A and B. (2 marks)
- b) State **one** functional difference between tools represented by the teeth arrangement **A** and **B**. (2 marks)

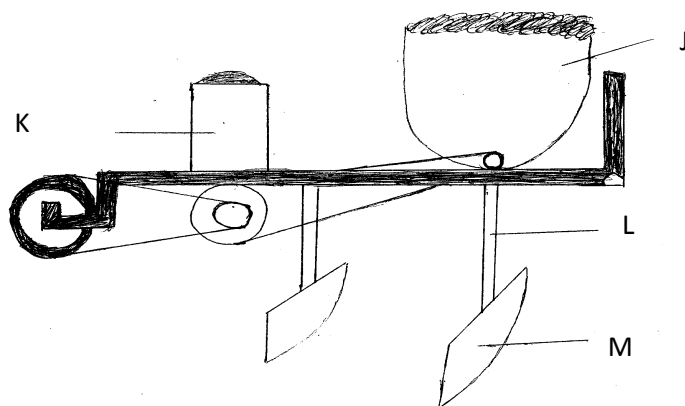
17. Study the illustration below and answer the questions thereafter.



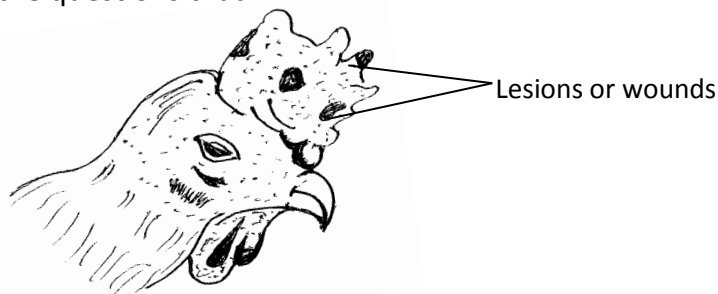
- a) Identify the parts labelled A,B,C, and D (2 marks)

- b) State **two** reasons why it is important to have the structure labelled D at the edge of the roofing materials. (2 marks)

18. A diagram of a planter is shown below. Study it and answer the questions that follow.



- a) Identify the parts labelled J, K, L and M. (4 marks)
 b) State **two** maintenance practices carried out on a planter. (2 marks)
19. The following diagram illustrates a symptom of a disease in poultry. Study it carefully and answer the questions that follow.



- a) Identify
 i) The disease (1 mark)
 ii) The causal organism (1 mark)
 b) Apart from lesions, state **two** other symptoms of the disease. (2 marks)
 c) State **two** control measures of the disease. (2 marks)

SECTION C (40 MARKS)

Answer any two questions from this section in the spaces provided.

20. a) What are the advantages of farm mechanization. (6 marks)
 b) Explain the differences between a 'petrol' and 'diesel' engine. (6 marks)
 c) Outline the short term services that should be carried out on a farm tractor. (8 marks)
21. a) Describe cattle management at dipping. (8 marks)
 b) State **six** maintenance practices of a plunge dip. (6 marks)
 c) Give **six** parts of a zero-grazing unit. (6 marks)
22. Discuss embryo transplant technology in Kenya. (20 marks)