

---

**KENYA NATIONAL EXAMINATION COUNCIL  
REVISION MOCK EXAMS 2016  
TOP NATIONAL SCHOOLS**

**STAREHE BOYS' CENTRE & SCHOOL  
AGRICULTURE  
PAPER 2  
TIME: 2 HOURS**

**SCHOOLS NET KENYA**  
Osiligi House, Opposite KCB, Ground Floor  
Off Magadi Road, Ongata Rongai | Tel: 0711 88 22 27  
E-mail: [infosnkenya@gmail.com](mailto:infosnkenya@gmail.com) | Website: [www.schoolsnetkenya.com](http://www.schoolsnetkenya.com)

---

# AGRICULTURE - MOCK 2016

## PAPER 2

TIME: 2 HOURS

### SECTION A: (30MARKS)

*ANSWER ALL QUESTIONS FROM THIS SECTION ON THE SPACES PROVIDED.*

- 1(a) Give **two** qualities that make thatch a good roofing material. (1 mark)
- .....
- b) Name **three** components of a truss. (1½ marks)
2. Give **two** reasons why Jersey breed of cattle is well suited to semi arid conditions. (1 mark)
- .....
- 3(a) State the effect of wrong turning of the egg. (½ mark)
- b) At what stage is soluble grit introduced to layer birds? (½ mark)
4. Give **two** uses of a wood float. (1 mark)
5. What **three** conditions may lead to culling of a breeding boar? (1½ marks)
6. Identify **two** practices carried out to increase timber durability. (1 mark)
- 7(a) State **three** characteristics of the Hampshire Down breed. (1½ marks)
- b) Name the **two** breeds of camels. (1 mark)
- 8(a) List **three** general functions of vitamins. (1½ marks)
- b) Simsim cake, a livestock feed has a starch equivalent of 40%. Explain. (1mark)
- 9(a) Explain how parasites cause economic losses to the farmer. (1mark)
- b) List **three** effects of Fleas to livestock. (1½ marks)
10. Tabulate **two** features that differentiates between dairy and beef cattle. (2 marks)
11. Define the following terms as used in livestock production. (1½ marks)
- a) Digestibility
- .....
- b) Prolificacy
- .....
- c) Malpresentation
- .....
12. Give **three** advantages of the contemporary comparison method of selection. (1½marks)
13. Why should bees be fed on sugar syrup? (1mark)
14. State **three** reasons for maintaining livestock tools. (1½mark)
15. Differentiate between butter and ghee. (1mark)
16. What is the advantage of using forage harvesters compared to a mower? (1mark)
17. Give **three** maintenance practices of ox – tine harrows. (1½marks)
18. List **two** functions of a tractor clutch. (1mark)
- 19(a) Give **two** pre disposing factors of pneumonia to calves. (1mark)
- b) Identify **three** areas infested with a three- host tick on a Boran bull. (1½marks)

### SECTION B: (20MARKS)

*ANSWER ALL QUESTIONS FROM THIS SECTION ON SPACES PROVIDED*

20. Study the structure of a calf pen below and then answer the questions that follow.



- a) Specify the measurements of H and N. (1mark)
  - b) State the function of part K. (1mark)
  - c) Why are parts U fitted at 1mm apart? (1mark)
  - d) List **two** reasons for housing the calves singly. (1mark)
- 21(a) Identify the equipments X and Y below. (1mark)

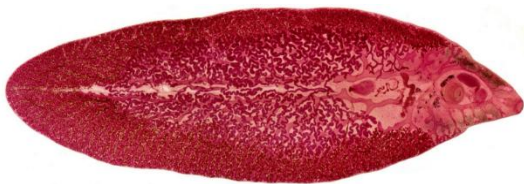


X



Y

- b) State the functions of each of the equipments. (2marks)
  - c) i) Name the tool used to castrate a piglet. (½mark)
  - ii) Give **two** reasons for castrating a male pig. (1mark)
- 22(a) Identify the parasites below. (1mark)



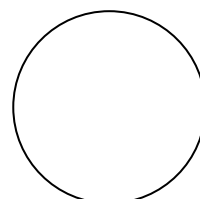
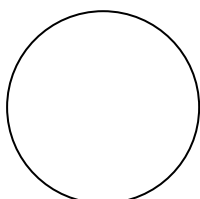
U



W

- b) Name two species of parasite U. (1mark)
- c) Why is it difficult to control parasite U? (1mark)
- d) How can one control parasite W? (½mark)
- e) A farmer wanted to mix 270kg of livestock feed containing 30% DCP by using Sorghum meal with 12% DCP and Soyabean meal containing 36% DCP. Calculate the quantities of each feedstuff he would have in the ration. (2marks)

- 23(a) Explain the behavior of the chicks shown by the following illustrations. (2marks)



- b) What is the role of the part labelled V? (½ mark)

- c) i) Identify the rabbit breed below. (1mark)



- ii) On the diagram name parts 1-3. (1½ marks)  
 d) The young of a rabbit is called..... while the male rabbit is referred to as ..... (1mark)

**SECTION C: (40MARKS)**

***ANSWER ANY TWO QUESTIONS FROM THIS SECTION ON FOOLSCAPS PROVIDED.***

- 24(a) Describe the procedure for honey harvesting. (5marks)  
 b) Name ten parts of an ox- drawn plough and state the function of each. (10marks)  
 c) Explain how physiological factors are used as a sign of ill or good health. (5marks)
- 25(a) Describe the process of milk let down in a cow. (6marks)  
 b) Describe the procedure of embryo transplant in cattle. (9marks)  
 c) Describe cattle management during dipping (5marks)
- 26(a) Outline the control measures of mastitis. (5marks)  
 b) Describe the method of preparing a table bird for marketing. (10marks)  
 c) Outline the general characteristics of indigenous cattle. (5marks)