
**KENYA NATIONAL EXAMINATION COUNCIL
REVISION MOCK EXAMS 2016
TOP NATIONAL SCHOOLS**

ALLIANCE GIRLS HIGH SCHOOL

AGRICULTURE

PAPER 2

2 ½ HOURS

SCHOOLS NET KENYA

Osiligi House, Opposite KCB, Ground Floor

Off Magadi Road, Ongata Rongai | Tel: 0711 88 22 27

E-mail: infosnkenya@gmail.com | Website: www.schoolsnetkenya.com

PRACTICE EXAM 2016

Paper 2

SECTION A (30MARKS)

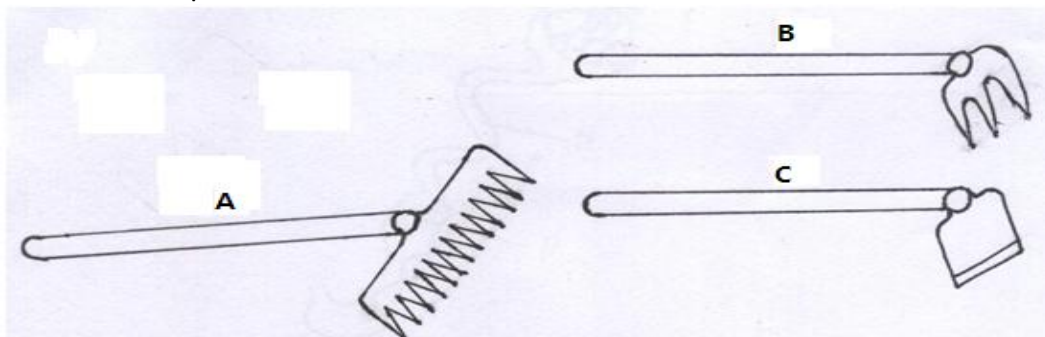
Answer ALL questions in this section in the spaces provided

1. **State four** factors that affects the digestibility of animal feed.(2mks)
2. Distinguish between crutching and ringing in sheep production (2mks)
3. **Give four** factors considered when sitting an apiary. (2mks)
4. **State four** physical features of a good layer (2mks)
5. **Give four** uses of harrows (2mks)
6. **Explain** the term 'hybrid vigour' as used in livestock production. (1mk)
7. **State four** desirable features of a rabbit hutch. (2mks)
8. **Give four** disadvantages of an artificial incubation.(2mks)
9. **State four** signs of round worms attack in livestock production. (2mks)
10. **List six** predisposing factors to livestock diseases. (3mks)
11. **Give four** maintenance practices of a disc plough. (2mks)
12. Name the vector which transmits the following diseases. (1mk)
 - i) East coast fever
 - ii) Trypanosomiasis
13. List **four** farm structures which would assist to control livestock parasites. 2mks)
14. State **four** signs which indicate that the sow is about to farrow. (2mks)
15. Name the other tool used together with the following tools during their operations. (2mks)
 - i) Cannular
 - ii) Brace
 - i) Elastrator
 - ii) Wood chisel
16. Name the strokes in the **TWO** stroke cycle engines. (1mk)

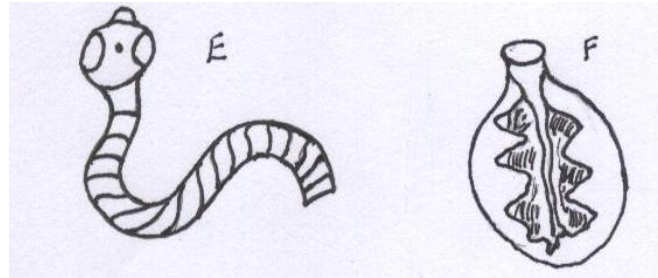
SECTION B (20MARKS)

Answer ALL questions in the spaces provided

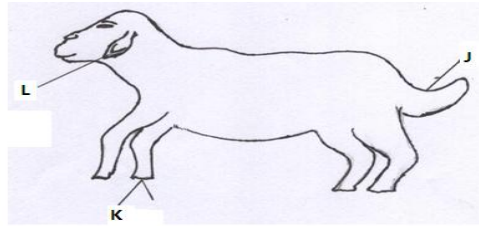
17. The diagram below illustrates the farm tools labeled A, B and C. Study them and answer the questions that follow



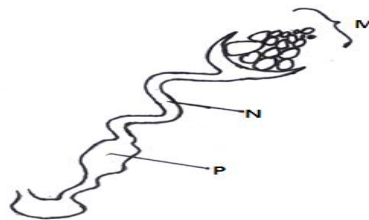
- a) **State THREE** proper uses for the tool labeled **A**. (3mks)
 - b) **State THREE** field conditions under which the tool labeled **B** would be more suitable for use than tool **C**. (3mks)
18. The diagrams **E** and **F** below shows livestock parasites



- Identify parasite labeled E and F (1mk)
 - Name the organ in which each parasite is commonly found (1mk)
 - Name the intermediate host of the parasite labeled E (½mk)
 - State four control measures of the parasite labeled F in livestock production. (2mks)
19. Below is a diagram of a sheep with some parts labelled J, K and L. Study the diagram and answer the question that follow



- Name the operation usually carried out on the part labeled J during the early stages of sheep life (½ mk)
 - Give TWO reasons for carrying out the above operation ie in (a) above (2mks)
 - Name TWO methods of carrying out the above operation ie (in (a) above). (1mk)
 - Which routine operation is usually carried out on the part labelled K. (½mk)
 - Give TWO reasons for carrying out the above operation i.e (d above).(1mk)
 - Name TWO methods of identification carried out at the part labeled L.1mk
20. Below is a diagram showing the reproductive system of a hens study the diagram and answer the questions that follow



- Identify the parts labeled M, N and P (1½mks)
- State the function of the parts labeled N and P (2mks)

SECTION C (40 MARKS)

Answer any TWO questions from this section in the spaces provided after question 23

21. (a) Describe the management of piglets from farrowing up to weaning of piglets. (12mks)

- (b) **Give FOUR** importance of feeding colostrum to calves. (4mks)
- (c) **State FOUR** causes of cannibalism in poultry production. (4mks)
22. (a) **State FIVE** advantages of farm mechanization. (5mks)
- (b) **Give FIVE** maintenance practices of a water cooling system of a tractor. (5mks)
- c) **State the major** structural and functional differences of the diesel fuel system and petrol fuel system of tractor engines. (10mks)
23. (a) **State FIVE** importance of keeping livestock healthy. (5mks)
- (b) Discuss milk fever disease in cattle under the following sub-headings
- (i) Cause (1mk)
- (ii) Symptoms (8mks)
- (iii) Control measures (3mks)
- © State **THREE** qualities of clean and high quality milk (3mks)