



# RISING STAR EXAMINATION SERIES STANDARD FIVE

YEAR 2021

## SCIENCE

Time: 1hr 40min

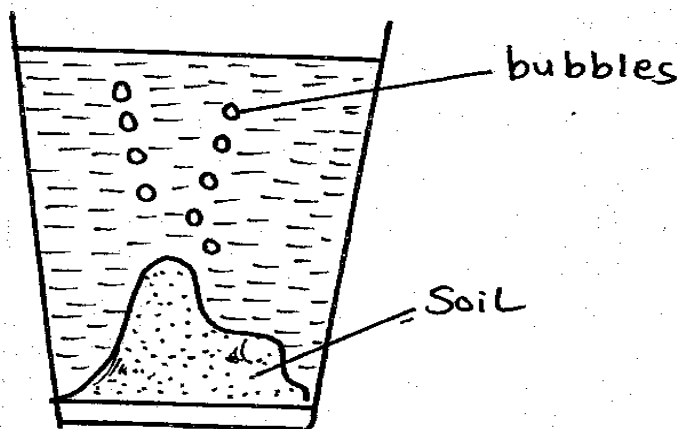
### HOW TO USE THE ANSWER SHEET

1. Use only an ordinary pencil.
2. Make sure that you have written on the answer sheet:-  
(i) YOUR NAME (iii) NAME OF YOUR SCHOOL
3. For each question, show the correct answer by drawing a line in the brackets in which the letter you have chosen is written.

1. Which of the following is **NOT** a tooth problem?

- A. Bleeding gums
- B. Bad smell
- C. Cavity
- D. Tooth sensitivity

2. This experiment shows that:-

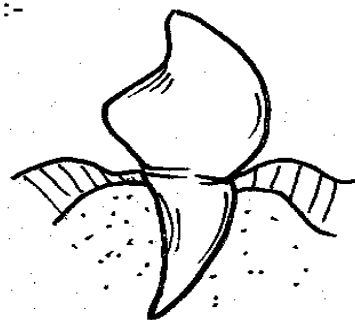


- A. water has air
- B. soil has bubbles
- C. soil has air
- D. soil has water

3. Food used to repair worn out tissues and build the body are known as:-

- A. protective food
- B. vitamins
- C. proteins
- D. carbohydrates

4. The diagram below shows a type of tooth. Its function is:-

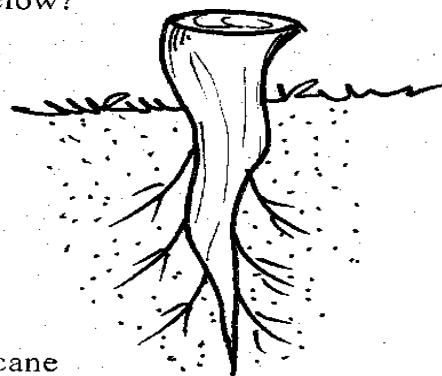


- A. biting
- B. tearing
- C. grinding
- D. crushing

5. HIV is likely to be found in these body fluids **EXCEPT**:-

- A. semen
- B. blood
- C. urine
- D. saliva

6. Which of these plants have the type of roots shown below?



- A. Sugarcane
- B. Maize
- C. Rice
- D. Bean

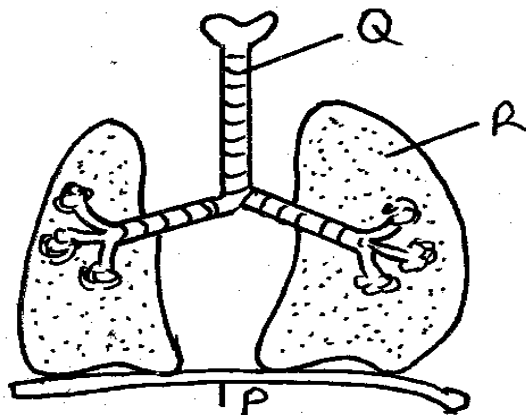
STD 5/SCIENCE

7. Bile is produced in the \_\_\_\_\_  
 A. mouth  
 B. pancreas  
 C. liver  
 D. stomach
8. HIV virus \_\_\_\_\_ the body immune system.  
 A. eats  
 B. weakens  
 C. strengthens  
 D. promotes
9. The following are chemicals found at home. Which one is **NOT**?  
 A. Fertilizer                      B. Beauty creams  
 C. Water                              D. Fuels
10. The following are general signs of poisoning **EXCEPT:-**  
 A. unconsciousness  
 B. backache  
 C. thirsty  
 D. burnt mouth
11. Medicinal drugs are used in all the following **EXCEPT:-**  
 A. reduce stress                      B. cure  
 C. treat                                  D. prevent
12. A written note by the doctor about an illness and the proper medicines for the illness is called:-  
 A. description                      B. analysis  
 C. diagnosis                          D. prescription
13. \_\_\_\_\_ is a process in which green plant make food.  
 A. Fern                                  B. Chlorophyll  
 C. Fungi                                  D. Photosynthesis
14. Which is a green flowering plant?  
 A. Grass                                  B. Mould  
 C. Moss                                  D. Fern
15. Which of these animals is the odd one out?  
 A. Hen                                      B. Sparrow  
 C. Eagle                                    D. Owl
16. The study of weather is called:-  
 A. meteorology  
 B. weather forecast  
 C. meteorologist  
 D. astronomers
17. The trachea has C-shaped rings to:-  
 A. clean the air  
 B. produce mucus to moisturize the air  
 C. keep it open  
 D. warm the air
18. Digestion begins in the:-  
 A. gullet  
 B. stomach  
 C. small intestine  
 D. mouth
19. We take \_\_\_\_\_ to prevent diseases.  
 A. curative medicine  
 B. supplements  
 C. pain relievers  
 D. vaccines
20. Which of the following is a weed?  
 A. Carrot                                  B. Millet  
 C. Pigweed                                  D. Orange
21. Saliva is produced by the:-  
 A. mouth  
 B. tongue  
 C. Oesophagus  
 D. salivary glands
22. Trachea is also called:-  
 A. wind pipe                              B. food pipe  
 C. gullet                                      D. alveoli

23. Study of weather is carried out in a \_\_\_\_\_
- weather chart
  - meteorology
  - weather station
  - atmosphere
24. The MAIN source of light on earth is:-
- moon
  - sun
  - electricity
  - lamp
25. Which is a balanced diet?
- Chapati, meat, potatoes
  - Rice, beans, potatoes
  - Bread, eggs, sausage
  - Ugali, beans, apple
26. Change of state from a solid is called:-
- melting
  - condensation
  - freezing
  - evaporation
27. Temperature is measured in \_\_\_\_\_
- degrees celsius
  - cubic metres
  - millimetres
  - degrees
28. Which is a fibre crop?
- Cotton
  - Sunflower
  - Millet
  - Cassava
29. Energy giving foods are also called:-
- proteins
  - fruits
  - roughages
  - carbohydrates
30. Protective foods are also called:-
- fats
  - proteins
  - vitamins
  - carbohydrates
31. Which one is NOT a use of heat?
- Cooking
  - Warming
  - Seeing
  - Ironing
32. In the digestive system, waste food materials not digested are stored in the:-
- rectum
  - liver
  - colon
  - stomach
33. HIV/AIDS cannot be spread through:-
- sharing utensils
  - sharing needles
  - sexual intercourse
  - breast feeding a child
34. A raingauge is used to measure:-
- temperature
  - wind speed
  - wind direction
  - amount of rainfall
35. Which is a fibre crop?
- Cotton
  - Sunflower
  - Millet
  - Cassava
36. At what age is a young child likely to shed teeth?
- 2 years
  - 6 months
  - 3 years
  - 6 years
37. Class four pupils collected a weed that left a strong bad smell. It had yellow flowers. The weed is:-
- oxalis
  - mexican marigold
  - wandering jew
  - pig weed
38. Which is NOT a function of the nose?
- Let in and out air
  - Warms the air
  - Moistens the air
  - Absorbs air into blood

39. The work of mucus and hair in the nose is to:-
- cause cold
  - increase immunity
  - trap dust and germs
  - keep nose open at all times
40. Children shed teeth between ages \_\_\_\_\_ years.
- 11-20
  - 2-3
  - 6-12
  - 3-5
41. AIDS stands for:-
- Acquired Immunodeficiency Virus
  - Acquired Immune Deficiency Syndrome
  - Acquired Immune Defending Syndrome
  - Acquired Immune Disease Syndrome
42. The force that makes liquids flow is called:-
- weight
  - force
  - cohesion
  - pressure
43. The indigestible food is expelled from the body through a process called:-
- ingestion
  - egestion
  - excretion
  - expulsion
44. The ability of the body to defend itself against diseases is called:-
- immunity
  - immune
  - defend
  - nutrition
45. Thick white clouds which have a flat base appear like a mountain of cotton wool are called:-
- cumulus
  - cirrus
  - stratus
  - nimbus

46. The parts marked Q, R and P are:-



- trachea, lung, diaphragm
  - diaphragm, gullet, mouth
  - gullet, lung, diaphragm
  - Food pipe, oesophagus, lungs
47. Three of the following are ways of storing water **EXCEPT**:-
- pot
  - drum
  - dams
  - pipes
48. I am a mammal. I fly and give birth to live young ones. Who am I?
- Duck
  - Eagle
  - Bat
  - Hawk
49. The following are general signs of poisoning **EXCEPT**:-
- unconsciousness
  - thirsty
  - burn mouth
  - backache
50. The gases that we breath out and in respectively are:-
- oxygen and carbon dioxide
  - carbon dioxide and oxygen
  - oxygen and water vapour
  - carbon dioxide and saliva