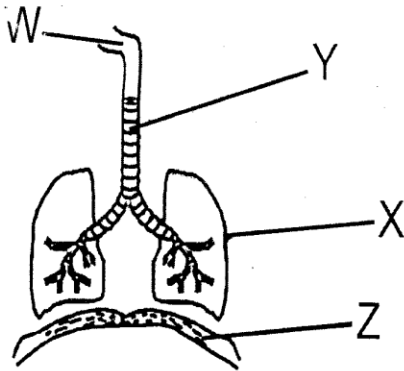


STANDARD SIX

SCIENCE

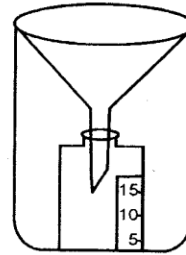
Time: 1hr 40 min

- Which one of the following is **not** a way in which HIV can be transmitted?
 - Sharing unsterilized body piercing tools.
 - Mother to child during birth.
 - Sleeping with an infected person.
 - Through sexual intercourse.
- Among the given planets, which one takes the longest time to move round the sun?
 - Jupiter
 - Mars
 - Venus
 - Saturn
- The diagram below shows the human breathing system.



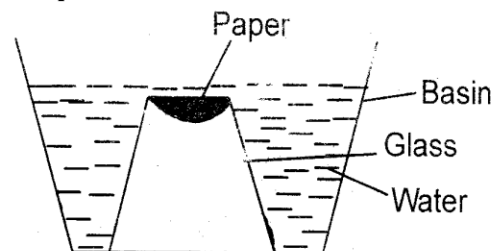
- Which letter represents the part that is **correctly** matched to its function?
- Y - Filters the air.
 - Z - Expands during breathing.
 - W - Absorption of air.
 - X - Moistens the air.
- Which one of the following is **not** a method of grazing?
 - Rotational grazing
 - Herding
 - Paddock grazing
 - Stall feeding
 - Which one of the following is **not** a sign of bilharzia?
 - Skin rash may develop.
 - Vomiting.
 - Blood appears in urine.
 - Coughing.

- The diagram below shows a simple weather instrument.



Which one of the following is the **main** reason why it should be dug into the ground? To:-

- make it firm
 - reduce evaporation rate of water
 - make it durable
 - prevent water from splashing.
- Which one **of the** following is **not** part of the pistil in flowers?
 - Anther
 - Style
 - Ovary
 - Stigma
 - Which part of the female reproductive system gives room for fertilization?
 - Uterus
 - Vagina
 - Oviduct
 - Ovary
 - Which of the following materials is **not** needed when investigating if light travels in a straight line?
 - Flexible tube
 - Cardboards
 - Nail
 - Mirror
 - Standard five pupils carried out the experiment shown below.



What conclusion did they make from the experiment?

- A. Gases occupy space.
- B. Air has definite mass.
- C. Oxygen supports burning.
- D. Liquids take the shape of the container.

11. Which type of soil erosion is characterized by small channels of water?

- A. Gulley erosion.
- B. Splash erosion.
- C. Rill erosion.
- D. Sheet erosion.

12. All the following are sources of water **except**:-

- A. springs
- B. rainfall
- C. ocean
- D. dams.

13. Which method of food preservation is **correctly** matched in the table below?

	Modern only	Modern and traditional
A.	Refrigeration	Drying
B.	Canning	Salting
C.	Use of low temperature	Canning
D.	Use of honey	Smoking

14. Which of the following statements is **not** correct about the type of soil that cracks easily when dry?

- A. Sticks together when wet.
- B. Drains most water.
- C. Has the smallest particles.
- D. Has the best capillarity.

15. Which of the following plants has a different root system from the others?

- A. Pigweed
- B. Onions
- C. Wandering Jew
- D. Sisal

Which one of the following is **not** an immunizable disease?

- A. Tuberculosis
- B. Pneumonia
- C. Measles
- D. Malaria

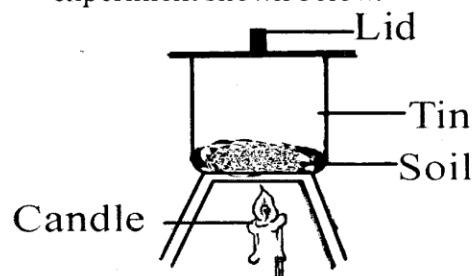
17. The following are signs and symptoms of a certain nutritional deficiency disease.

- (i) *Wrinkled skin.*
- (ii) *Severe loss of weight.*
- (iii) *Muscles disappear.*

The above disease can be prevented by:-

- A. taking curative medicines
- B. including foods rich in protein in a diet
- C. taking foods rich in calcium
- D. feeding on a balanced diet.

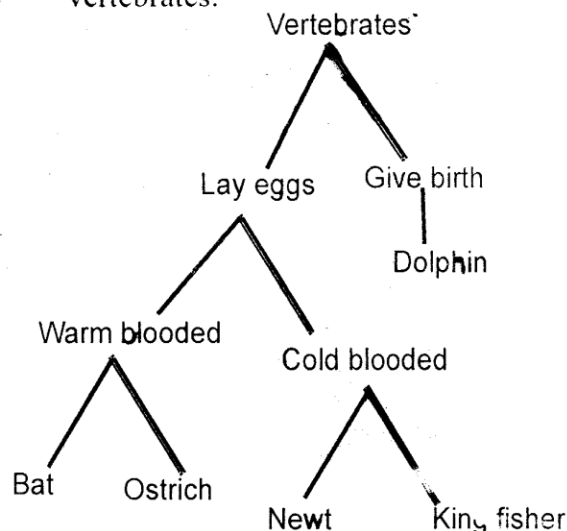
18. Standard four pupils carried out the experiment shown below.



Which component of soil were they **mainly** investigating?

- A. Humus
- B. Moisture
- C. Living organisms
- D. Air

19. The chart below shows classification of vertebrates.



Which animals were **wrongly** classified?

- A. Dolphin and bat.
- B. Ostrich and newt.
- C. Newt and dolphin.
- D. Kingfisher and bat.

20. Which of the following groups of plants are all oil crops?

- A. Sunflower, cotton and coconut.
- B. Sunflower, sisal and cashewnuts.
- C. Avocado, cotton and wheat.
- D. Cocoa, sunflower and groundnuts.

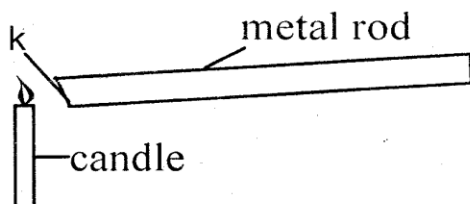
21. Which one of the following is the **best** way of maintaining the teeth?

- A. Eating enough food.
- B. Visiting a dentist.
- C. Observing oral hygiene.
- D. Avoiding crushing hard foods.

22. Which of the following statements is **false** about the type of clouds drawn below?



- A. Their presence indicates fair weather.
 B. They are usually white in colour.
 C. They look like bundles of cotton wool.
 D. They appear **low** in the sky.
23. Which one of the following is **not** a commercial feed?
 A. Clover B. Molasses
 C. Maize germ D. Fish meal
24. A beam balance is an instrument that is used to:-
 A. measure weight of an object
 B. compare quantity of matter
 C. measure volume occupied by an object
 D. determine shape of object.
25. In the set-up below, which method of heat transfer made the point marked **K** hot?

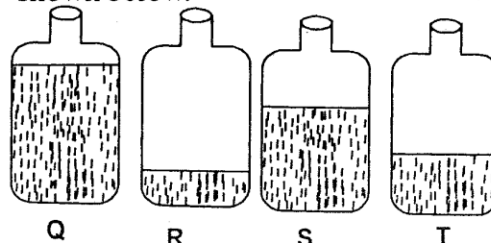


- A. Conduction B. Convection
 C. Melting D. Radiation
26. Which of the following animals is **correctly** matched to the way it protects itself from danger?
 A. Bee- Biting
 B. Centipede - Coiling
 C. Ostrich - Running away
 D. Slug - Hiding in a shell
27. Which of the following food consists of a balanced diet?
 A. Beans, rice and potatoes.
 B. Millet, eggplant and liver.
 C. Meat, kale and oranges.
 D. Cassava, porridge and eggs.
28. All the following nutrients are absorbed in the small intestine **except**:-
 A. calcium
 B. carbohydrates
 C. protein
 D. fats.
29. Which of the following pairs of plants consists of green non-flowering plants **only**?
 A. Sisal and onions.
 B. Mould and moss.
 C. Mushroom and mildew.
 D. Fern and liverwort.

30. Which one of the following pairs does **not** consist of useful animals?

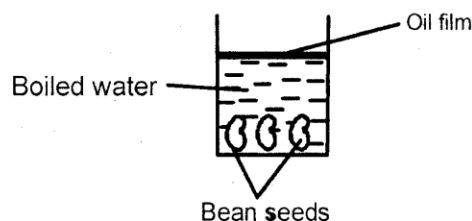
A. Dog and cat. B. Termite and bee.
 C. Fish and duck. D. Donkey and goat.

31. Four bottles were filled with water as shown below.



Which bottle is **likely** to produce the loudest sound when blown?

- A. T B. R
 C. Q D. S
32. Which of the following factors enables a boat to float on water?
 A. Shape B. Weight
 C. Size D. Type of material
33. All the following are reasons for lighting a house properly **except** to:-
 A. warm the house
 B. improve safety
 C. see clearly
 D. access things easily.
34. Which of the following materials allows some light to pass through it but one **cannot** see through clearly?
 A. Clear polythene paper.
 B. Windscreen.
 C. Tracing paper.
 D. Clear water.
35. The set-up below was used to investigate a certain condition necessary for seed germination.

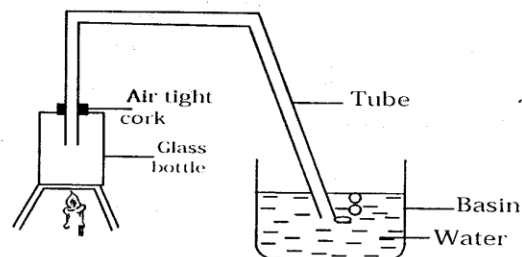


Which condition was being investigated?

- A. Water B. Light
 C. Warmth D. Air
36. Which of the following factors **mainly** affect drainage in the soil?
 A. Size of air spaces.
 B. Soil texture.
 C. Size of soil particles.
 D. Amount of water.

37. All the following are importances of water in the diet **except**:-
 A. moisten the skin
 B. **prevent constipation**
 C. help in absorption of digested food
 D. help in removing waste materials.
38. The following are characteristics of flowers.
 (i) *Small in size.*
 (ii) *Produces large pollen grains.*
 (iii) *Has short style.*
 (iv) *Has feathery stigma.*
 Which of the following pairs consists of characteristics of insect pollinated flowers?
 A. (i) and (iv). B. (i) and (iii).
 C. (ii) and (iii). D. (ii) and (iv).
39. Which one of the following is a physical change in adolescent girls **only**?
 A. Increase in size and weight.
 B. Pimples may appear on the face.
 C. Broadening of hips.
 D. Menstruation flow stops.
40. Which of the following weather instruments should be placed in a shade where there is free circulation of air?
 A. Windvane
 B. Windsock
 C. Rain gauge
 D. Liquid thermometer
41. Which one of the following is **not** a safety precaution when handling simple tools?
 A. Proper storage of tools.
 B. Cleaning tools after use.
 C. Repairing broken handles.
 D. Proper use of tools.
42. Which one of the following statements is **not** true about water vapour? It:-
 A. changes state when heated
 B. has no definite volume
 C. contracts when cooled
 D. has definite mass.
43. Which one of the following is **not** a method of controlling the spread of cholera?
 A. Covering food well.
 B. Wearing gloves when handling contaminated water.
 C. Proper disposal of faeces.
 D. Seeking vaccination in case of outbreak.

44. The set-up below was carried out during a Science practical lesson.



From the above set-up, the pupils concluded that:-

- A. liquids expand and contract
 B. gases have indefinite volume
 C. matter changes state when heated
 D. air expands and contracts.
45. We should keep our legs clean in order to avoid the infection of:-
 A. bedbugs
 B. jiggers
 C. ticks
 D. lice.
46. It is **not** true to say that pressure in liquids:-
 A. depends on the height of container
 B. is exerted in all directions
 C. is equal at the same depth
 D. decreases with depth.
47. At which stage of HIV infection is the body's immune system weakest?
 A. Window stage.
 B. Symptomatic stage.
 C. Incubation stage.
 D. Full-blown stage.
48. Which one of the following **cannot** be used to make rollers?
 A. Maize cob B. Maize stalk
 C. Lids D. Round stick
49. Standard five pupils collected the following materials during a Science lesson.
 (i) *U-shaped log.*
 (ii) *A plank of wood.*
 Which of the following were they **likely** to make?
 A. Beam balance B. See-saw
 C. Windvane D. Crowbar
50. Which of the following factors does **not** affect the rate of soil erosion?
 A. The type of soil.
 B. Temperature of the region.
 C. Vegetation cover.
 D. Amount of rainfall.