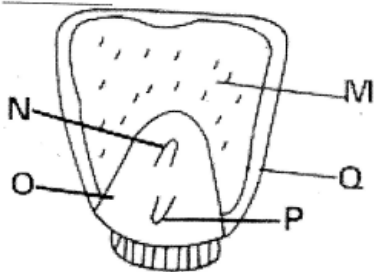


# STANDARD SIX MID TERM 3 EXAM 2017, SCIENCE

1. Which parts of the female reproductive system are involved during ovulation?
  - A. Uterus and oviduct
  - B. Ovary and oviduct
  - C. Cervix and uterus
  - D. Vagina and cervix
2. The following happen to boys during adolescence except;
  - A. growth of pubic hair
  - B. breaking of the voice
  - C. wet dreams
  - D. enlargement of the hip bone

Use the diagram to answer questions 3 and 4.



3. Which two parts represent the embryo?
 

A. N and P	B. M and O
C. P and Q	D. Q and M
4. The part marked **M** is called \_\_\_\_\_.
  - A. seed leaf
  - B. cotyledon
  - C. endosperm
  - D. seed coat
5. A bean seed can germinate in the absence of \_\_\_\_\_.
 

A. moisture	B. soil
C. oxygen	D. warmth
6. Which statement below is not true about the sun?

- |                                       |                                        |
|---------------------------------------|----------------------------------------|
| A. It is part of the solar system     | B. It is the largest star              |
| C. It produces its own heat and light | D. It is the nearest star to the earth |
7. The function of the chisel-shaped teeth in human beings is \_\_\_\_\_.
  - A. tearing food
  - B. grinding food
  - C. chewing food
  - D. cutting food
8. Floating and sinking does not depend on \_\_\_\_\_.
 

A. material	B. weight
C. size	D. shape
9. The male reproductive organ that deposits sperms in the vagina is called \_\_\_\_\_.
 

A. testes	B. sperm ducts
C. penis	D. scrotum
10. Which of the following is not part of the pistil of a flower?
 

A. Anthers	B. Stigma
C. Ovary	D. Style
11. Standard six saw a bee visiting a flower. Which statement is not true about the flower the bee visited?
  - A. It was bright in colour
  - B. It was scented
  - C. It had nectar
  - D. It was small in size
12. The vaccine given to a baby orally at birth prevents \_\_\_\_\_.
  - A. tuberculosis
  - B. measles
  - C. polio
  - D. whooping cough

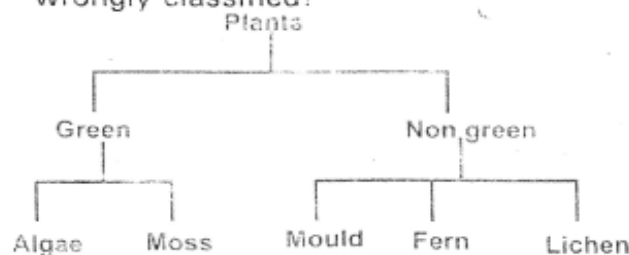
13. Which one is an effect of HIV infection to an individual?

- A. Poor economic growth
- B. Low self esteem
- C. Sadness in the family
- D. Loss of parents

14. Which pair has small animals that share common characteristics?

- A. Centipede and spider
- B. Bee and crab
- C. Mite and tsetse fly
- D. Flea and lady bird

15. In the chart below which plant is wrongly classified?



- A. Algae
- B. Mould
- C. Moss
- D. Fern

16. In the human digestive system which part absorbs water and mineral salts?

- A. Colon
- B. Ileum
- C. Stomach
- D. Rectum

17. Most cooking pans are made of \_\_\_\_\_

- A. copper
- B. glass
- C. aluminium
- D. silver

18. Which one describes protective foods?

- A. Mineral salts
- B. Vitamins
- C. Proteins
- D. Carbohydrates

19. The following are examples of diseases that attack human beings. Which one causes dehydration?

- A. Malaria
- B. Bilharzia
- C. AIDS
- D. Cholera

20. Thick cotton like clouds in the sky indicate \_\_\_\_\_

- A. fine weather
- B. thunderstorms
- C. drizzles
- D. dry weather

21. The planet with the longest orbit is \_\_\_\_\_

- A. Mercury
- B. Saturn
- C. Neptune
- D. Jupiter

22. The following are all components of the soil except;

- A. Micro-organisms
- B. Dead plants and animals
- C. Inorganic substances
- D. Living things

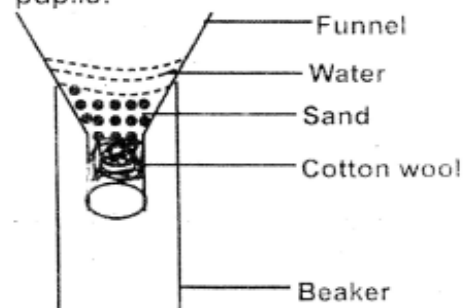
23. We are able to see objects because they \_\_\_\_\_

- A. absorb light
- B. reflect light
- C. produce light
- D. refract light

24. Which one is not a function of plant leaves?

- A. Photosynthesis
- B. Storage of food
- C. Transpiration
- D. Absorption of water

25. The diagram below shows an activity carried out by standard five pupils.



Which two components of sandy soil could be investigated using the activity?

- A. Capillarity and texture

- B. Drainage and water retention  
C. Water retention and capillarity  
D. Drainage and capillarity
26. Which one of the following places can one get a type of soil that makes the longest ribbon?  
A. Road side  
B. River bed  
C. Garden  
D. Anthill
27. Which of these processes makes water in a sufuria get warm?  
A. Convection  
B. Radiation  
C. Conduction  
D. Absorption
28. Which substance has a definite mass only?  
A. Ice  
B. Water  
C. Water vapour  
D. Stone
29. Heavenly bodies that go round the sun are called \_\_\_\_\_  
A. stars  
B. planets  
C. moons  
D. comets
30. Which list below has only cereal crops?  
A. Maize, wheat, rice  
B. Beans, groundnuts, peas  
C. Wheat, beans, sorghum  
D. Ground nuts, wheat, beans
31. The following materials are needed when modelling the solar system except;  
A. Plasticine  
B. Thorns  
C. Cotton wool  
D. Manila paper
32. Which one is not a recreational use of water?  
A. Skiing  
B. Fountain  
C. Boat racing  
D. Surfing
33. The parts of the breathing system that have mucus and hair are \_\_\_\_\_  
A. trachea and air sacs  
B. nose and lungs  
C. bronchioles and bronchi  
D. nose and trachea
34. The following are some characteristics of vertebrates:  
(i) Lay eggs  
(ii) Varying body temperature  
(iii) Dry scales
- Which animal below has the above characteristics?  
A. Shark  
B. Toad  
C. Lizard  
D. Ostrich
35. Which animal below moves by slithering?  
A. Snake  
B. Centipede  
C. Flea  
D. Cockroach
36. The following are harmful animals except:  
A. mosquito  
B. butterfly  
C. snake  
D. flea
37. Which one is not an artificial way of lighting the house?  
A. Kerosene lamp  
B. Electric bulbs  
C. Solar lamps  
D. Skylights
38. A person infected with HIV may test negative during \_\_\_\_\_  
A. full blown stage  
B. incubation stage  
C. window stage  
D. symptomatic stage
39. The diagram shows a phase of the moon.



Name the phase of the moon shown in the diagram above.

- A. Full moon
- B. New moon
- C. Crescent moon
- D. Gibbous moon

40. Preventive drugs are also called

- A. vaccines
- B. pain killers
- C. antibiotics
- D. stimulants

41. Which one is not an example of force?

- A. Weight
- B. Friction
- C. Effort
- D. Mass

42. Which one of the following is caused by a plasmodium parasite?

- A. Tuberculosis
- B. Malaria
- C. Flue
- D. Cholera

43. To prevent tools from rusting we should

- A. use them regularly
- B. sharpen them when blunt
- C. oil them
- D. wash them after use

44. Which one of the following is not a method of preserving food?

- A. Smoking
- B. Boiling
- C. Freezing
- D. Use of honey

45. The following are rotational methods of grazing except;

- A. Paddocking
- B. Strip grazing
- C. Tethering
- D. Herding



46.

The bird shown in the diagram above feeds on

- A. nectar
- B. flesh
- C. grains
- D. fish

47. The type of soil erosion that is caused by rain drops is

- A. sheet
- B. rill
- C. gully
- D. splash

48. Which one is not a problem related to teeth?

- A. Bad smell
- B. Shedding
- C. Bleeding gums
- D. Dental caries

49. To prevent constipation in human beings, we should eat foods rich in

- A. vitamins
- B. roughage
- C. mineral salts
- D. proteins

50. Which one is not a source of light?

- A. Moon
- B. Stars
- C. Glow worm
- D. Fire fly