

STANDARD EIGHT END TERM 2 EXAM, 2017

SCIENCE

Time: 1 Hour 40 Minutes

HOW TO USE YOUR ANSWER SHEET

1. Use an ordinary pencil only.
2. Make sure that you have written on the answer sheet:-
(I) YOUR NAME (II) YOUR INDEX NUMBER (III) NAME OF YOUR SCHOOL
3. For each question show the correct answer by drawing a line in the bracket in which the letter you have chosen is written.

- | | |
|---|--|
| <ol style="list-style-type: none">1. The falling off of deciduous teeth is known as
A. milk teeth. B. shedding of teeth.
C. temporary teeth. D. permanent teeth.2. In the breathing system, air is cleaned, warmed and moistened. Which parts are involved in this?
A. Diaphragm and nose.
B. Lungs and trachea.
C. Trachea and nose.
D. Nose and lungs.3. In the digestive system, the following happens in the mouth EXCEPT
A. germs in the food are killed.
B. food is broken down.
C. food is turned.
D. food is rolled into boluses.4. In the male reproductive system, the _____ carries urine and sperm out of the body.
A. ureter B. kidney
C. vagina D. urethra5. The following are processes of birth.
(i) <i>The amnion breaks.</i>
(ii) <i>Umbilical cord is tied.</i>
(iii) <i>Labour pain begins.</i>
(iv) <i>Baby is pushed out.</i>
Which is the CORRECT order?
A. (i) (iii) (iv) (ii) B. (iii) (iv) (i) (ii)
C. (iii) (i) (iv) (ii) D. (ii) (iii) (iv) (i)6. Which one of the following CORRECTLY describes AIDS?
A. Human Immunodeficiency Virus.
B. Body lacks ability to protect itself.
C. Ability of body to defend itself.
D. Body acquires a disease from outside.7. Which one of the following information is NOT important when buying medicine?
A. Expiry date. B. The dose to take.
C. Duration to take. D. Manufacture date. | <ol style="list-style-type: none">8. Identify the mode of transmission of HIV/AIDS below.
A. Abstain from sex.
B. Do not share cutting tools.
C. Blood transfusion.
D. Cover all open wounds and cuts.9. The following are signs and symptoms of Tuberculosis EXCEPT
A. joint pain.
B. loss of weight.
C. chronic cough.
D. loss of appetite.10. The drug that causes hallucination to the user when taken is
A. alcohol.
B. tobacco.
C. miraa.
D. cocaine.11. The following are signs and symptoms of sexually transmitted diseases. Which one is for syphilis?
A. Lower abdominal pain.
B. Burning sensation.
C. Appearance of chancre.
D. Ulcers around the anus.12. Which one of the following is NOT a control measure for HIV/AIDS?
A. Creating public awareness.
B. Abstaining from sex.
C. Mass education.
D. Voluntary counselling and testing.13. One of the following describes the symptomatic stage of HIV/AIDS. Which one?
A. Death occurs.
B. Looks normal and healthy.
C. Tests negative but infected.
D. Opportunistic infections. |
|---|--|

STD. 8/SCI/

Pg. 1

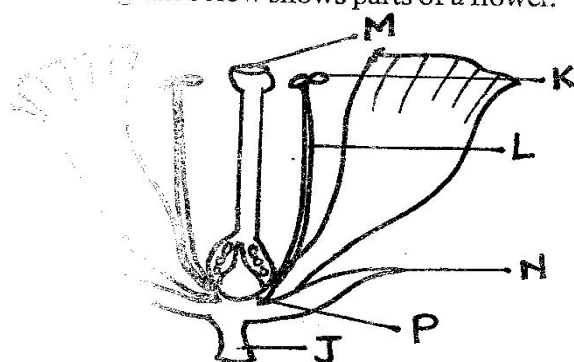
14. Farmers control weeds for the following reasons EXCEPT

A. Killing them out.
B. they are harmful.
C. crops become unhealthy.
D. to control pests and diseases.

15. The table below classifies plants into green, non-green, flowering and non-flowering respectively. Which one is CORRECT?

A. Cedar, mango, moulds, penicillin.
B. Yeast, maize, mushrooms, puffball.
C. Mosses, algae, toadstool, ferns.
D. Algae, mushroom, jacaranda, cypress.

16. The diagram below shows parts of a flower.



Which parts are involved in pollination?

A. K and L
B. P and J
C. M and K
D. M and L

Study the information below and use it to answer question 17.

Leopards eat gazelle.
Gazelle eat grass.
Ants eat Leopard.

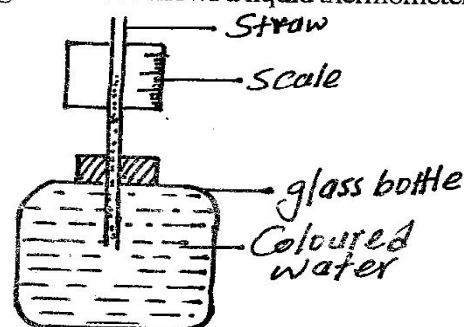
17. Using the information above, which one of the following is the CORRECT food chain?

A. Ants → leopard → gazelle → grass.
B. Grass → gazelle → leopard → ants.
C. Leopards → gazelle → grass → ants
D. Leopards → ants → grass → gazelle.

18. Which one of the following is an effect of crop diseases?

A. Stunted growth.
B. Discolouration of the leaves.
C. With. g.
D. Reduced yields.

19. The diagram below shows a liquid thermometer.



Which one of the following is TRUE about the weather instrument above?

A. The bottle should be made of thin glass.
B. The scale is numbered from top to bottom.
C. Air in the straw expands and pushes water down.
D. Air expands when heated and contracts when cooled.

20. Class eight collected the following materials to model the solar system.

Soft board	Papier - mache
Manilla paper	Name tags
Pins	Glue

How did they use the pins?

A. Model the sun and planets.
B. Mount planets on the circles.
C. Paste manilla paper on the softboard.
D. Draw circles on the manilla.

21. The following shows classification of animals with an example given. Which one is NOT correct?

A. Amphibians e.g Salamander.
B. Mammals e.g Bat.
C. Vertebrates e.g Snake.
D. Invertebrates e.g Fish

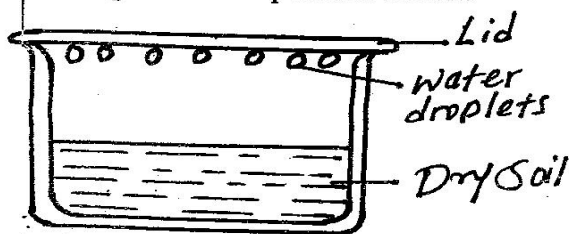
22. Animals can be classified using the following characteristics EXCEPT

A. where they live.
B. their colour.
C. how they reproduce.
D. what they eat.

23. Which one of the following is NOT a method of controlling human intestinal worms?

A. Proper sanitation.
B. Regular deworming.
C. Spraying regularly.
D. Proper cooking of food.

24. One of the following is **NOT** a sign of ill-health in livestock?
- Blood in stool.
 - Stunted growth.
 - Rough coat.
 - Discoloured leaves.
25. The following are all uses of water **EXCEPT**
- drinking.
 - cooking.
 - watering plants.
 - pouring.
26. Bilharzia is one of the water borne diseases. One of the following are preventive measures for water borne diseases. Which is for Bilharzia?
- Proper treatment of water.
 - Wearing protective clothing when handling stagnant water.
 - Boiling water and then cooling.
 - Proper sanitation.
27. Which one of the following does **NOT** show how water gets polluted?
- Oil spillage.
 - Surface run-off.
 - Storing water in dams.
 - Acid rain.
28. The following are ways of conserving water. Which one is **CORRECT**?
- Boiling water.
 - Proper hygiene.
 - Industrial waste.
 - Harvesting.
29. Std. 4 class carried out the following experiment to investigate the composition of soil.

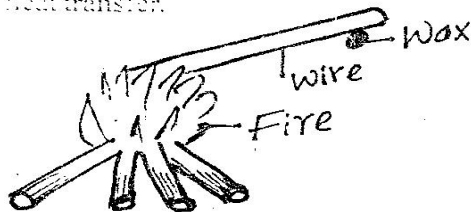


Which component of the soil were they investigating?

- Soil has moisture.
- Soil has air.
- Soil has organic matter.
- Soil has inorganic matter.

30. Which one explains the term soil texture?
- Ability of soil to retain water.
 - Ability of soil to allow water to pass through it.
 - Ability of water to go up a tube.
 - Noted by feeling the soil between the fingers.
31. Which one of the following is an inorganic fertilizer?
- Organic mulches.
 - Compost manure.
 - Diammonium phosphate.
 - Green manure.
32. From the following, identify a basic food group.
- Carbohydrates.
 - Body building foods
 - Proteins.
 - Fats and oils.
33. The best prevention against nutritional deficiency disease is
- eating a balanced diet.
 - going to the hospital.
 - vaccination.
 - buying medicine.
34. In which traditional methods of preserving food would you place a fridge?
- Drying.
 - Canning.
 - Smoking.
 - Use of low temperature.
35. Which one of the following is a natural source of light?
- Moon
 - Candle
 - Glow worm
 - Electricity
36. The following are uses of heat **EXCEPT**
- electricity.
 - cooking.
 - warming.
 - ironing.
37. Which one of the following is a source of sound?
- Fire
 - Matches
 - Electricity
 - Animal

38. Below is a diagram representing methods of heat transfer.



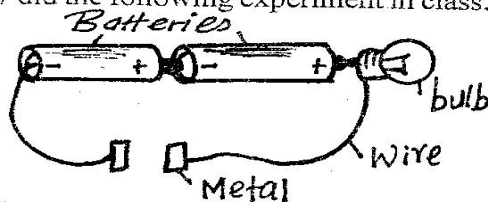
Which method is it?

- A. Convection
B. Conduction
C. Radiation
D. Conductors
39. The following experiment was done by a std. 6 class to investigate light.



What were they investigating?

- A. Reflection
B. Making a rainbow
C. Refraction
D. Translucent
40. Std. 7 did the following experiment in class.



They were investigating

- A. good and poor conductors.
B. sources of electricity.
C. a simple circuit.
D. safety measures.
41. When investigating floating and sinking, std. 4 crushed a bottle top with a hammer and then placed it on water. Which factor of floating and sinking were they investigating?
A. Size B. Density C. Material D. Shape
42. Which one of the following **CORRECTLY** describes solids?
A. Definite shape, definite volume, indefinite mass.
B. Definite shape, definite volume, definite mass.
C. Definite mass, indefinite volume, indefinite shape.
D. Definite mass, definite volume, indefinite shape.

43. Which component of air does a seed use when germinating?

A. Carbon dioxide
B. Nitrogen
C. Oxygen
D. Moisture

44. Which one of the following is a non-magnetic material?

A. Cobalt
B. Brass
C. Iron
D. Nickel

45. Below are safety measures when using tools. Which one **CORRECTLY** describes a safety measure when using a hammer?

A. Do not plough too near your feet.
B. Keep your hands away from the cutting point.
C. Keep the other hand away to avoid hurting yourself.
D. Hold the opener and bottle firmly.

46. Movement of objects is caused by

A. motion.
B. push or pull.
C. rest.
D. stationary.

47. Name another tool that has the positions of fulcrum, effort and load similar to that of a wheelbarrow?

A. Claw hammer
B. Crow bar
C. Spade
D. Scissors

48. Which one of the following **CORRECTLY** states the meaning of environment?

A. What an organism feeds on.
B. Water, soil, plants and animals.
C. The surrounding of an organism.
D. How an organism reproduces.

49. Among the following components of the environment, which one is able to make its own food?

A. Plants
B. Animals
C. Soil
D. Water

50. Which one of the following is found in both the heart and the veins?

A. Valves
B. Lumen
C. Pulse
D. Ventricles