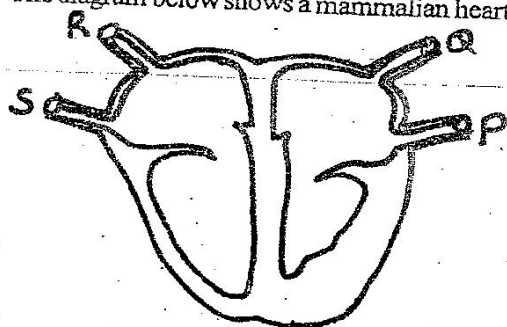


# STANDARD SEVEN END TERM 2 EXAM, 2017

## SCIENCE

1. The diagram below shows a mammalian heart.



Which one of the following blood vessels carry dark red blood?

- A. R and Q  
B. Q and S  
C. P and Q  
D. R and S

2. The following are ways of using water sparingly except:

- A. repairing leaking taps  
B. re-using dirty water  
C. turning off taps when not in use  
D. using drip method for irrigation

3. Which one of the following ways can be used to control external livestock parasites?

- A. Dipping and dosing  
B. Drenching and spraying  
C. Spraying and dipping  
D. Deworming and dipping

4. the following are ways in which water is polluted Except:

- A. excessive use of farm chemicals.  
B. using aerosol sprays  
C. ploughing near water sources  
D. releasing industrial wastes into water sources

5. Plants depend on other plants for all the following except:

- A. pollination  
B. support  
C. habitat  
D. shade

6. Which one of the following consists of the living components of the environment?

- A. Animals and water  
B. Water and air

- C. Plants and animals  
D. Air and animals

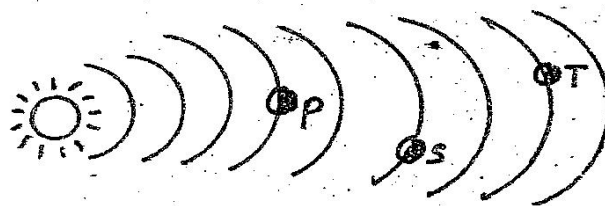
7. The following are health effects of drug abuse except:

- A. dropping out of school  
B. impaired judgement  
C. lack of concentration  
D. poor health

8. Which one of the following is the best way of controlling human intestinal worms?

- A. Boiling drinking water  
B. Washing raw foods  
C. Proper treatment of water  
D. Ensuring proper sanitation

9. The diagram below shows part of the solar system ..



The planets marked S, T and P respectively are:

- A. Mars, Saturn, Neptune  
B. Venus, Saturn, Uranus  
C. Saturn, Neptune, Mars  
D. Jupiter, Neptune, Mars

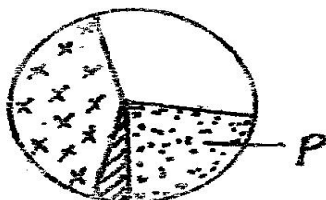
10. The following are blood vessels except

- A. pulmonary vein  
B. platelets  
C. venacava  
D. aorta

11. Which one of the following is NOT a function of the largest components of blood?

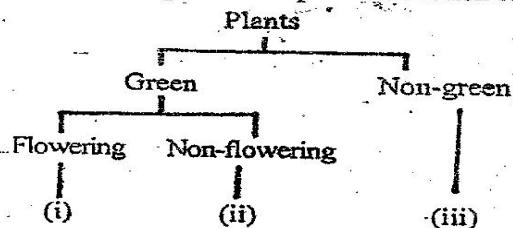
- A. Transporting digested food  
B. Transporting oxygen in the body  
C. Transporting waste products  
D. Transporting carbon dioxide

12. The diagram below shows the components of air



Which one of the following is a use of the component of air marked Q?

- A. Used in germination of seeds  
B. Used in electric bulbs  
C. Used in fixing nitrates in soil  
D. Used in preserving fizzy drinks
13. The following are effects of force. Which one is not?  
A. Changing the direction of a moving object  
B. Increasing the speed of a moving object  
C. Increasing a mass of a moving object  
D. Stopping a moving object
14. Which one of the following statements is NOT true? During breathing in  
A. the diaphragm moves inwards  
B. the ribs moves outwards  
C. the diaphragm moves downwards  
D. the lungs becomes inflated
15. Which one of the following only consist of tuber crops?  
A. Arrow roots, sugarcane, sweet potatoes  
B. Yams carrots, cassava  
C. Irish potatoes, beetroots, onions  
D. Passion, sunflower, beans
16. The following shows simple classification of plants.



Which one of the following crops will correctly fit i, ii and iii?

- A. Avocado, algae, grass  
B. Maize, orange, moss  
C. Groundnuts, lichen, mould  
D. Rice, grass, mushroom
17. Which one of the following consists of a pair of

waterborne diseases?

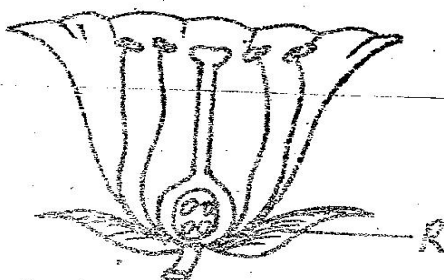
- A. Cholera and bilharzia  
B. Typhoid and anaemia  
C. Cholera and rickets  
D. Malaria and tuberculosis
18. The following are controlled methods of grazing except:  
A. herding  
B. paddocking  
C. strip grazing  
D. tethering
19. The following are effects of HIV and AIDS infection on the nation except:  
A. low economic production  
B. school drop outs  
C. lack of parental care  
D. poor health care
20. Which one of the following pairs of a maize seed stores food?  
A. Cotyledon  
B. Endosperm  
C. Plumule  
D. Radicle
21. Which one of the following parts of the human digestive system is not correctly matched with its function?  
A. Duodenum - digesting fats and oils  
B. Colon - absorbing water and mineral salts  
C. Oesophagus - allowing the passage of food  
D. Stomach - absorbing digested food
22. The following are physical changes observed in adolescents:  
i) Appearance of principles on the face.  
ii) Onset of wet dreams.  
iii) Growth of hair in pubic areas  
iv) Broadening of the hips  
v) Increase in body weight  
Which changes are observed in both boys and girls?  
A. i and v  
B. ii and v  
C. ii and iv  
D. v and iii
23. In a certain grassland, there are snakes, frogs and grasshoppers. Which one of the following shows the correct food chain?  
A. Grass → Frogs → Grasshoppers → Snakes  
B. Snakes → Frogs → grasshoppers → Grass  
C. Grass → Grasshoppers → Frogs → Snakes  
D. Grass → Snakes → Grasshoppers → Frogs
24. Which one of the following is NOT true about a flower that has a sweet scent?  
A. It is brightly coloured  
B. It produces few pollen grains  
C. It has sticky stigma



25. One of the following is an industrial use of water. Which one?

A. Keeping fish                      B. Making fountains  
C. Spraying animals              D. Water sports

26. The diagram below shows a flower.



The function of the part marked R is to:

A. produce the female sex cells  
B. Attract insects for pollination  
C. Protect the flower during the bud stage  
D. receive the pollen grains

27. Which one of the following animals have varied body temperature and have no scales?

A. Toad and lizard  
B. Newt and salamander  
C. gecko and chameleon  
D. Shark and frog

28. One of the following consists of conserved livestock feeds. Which one?

A. Hay and silage                      B. Fodder and concentrates  
C. Silage and pastures              D. Pastures and fodder

29. Which one of the following statements is false about the type of human teeth that are not shed?

A. They have broad surfaces  
B. They are used for chewing  
C. They have ridges  
D. They have two roots

30. The following are ways through which HIV/AIDS is not transmitted except

A. sharing bathrooms and toilets  
B. playing with infected people  
C. sharing sharp piercing tools  
D. living with infected people

31. Which one of the following blood components is not correctly matched with its function?

A. Red blood cells - Transporting oxygen in the body  
B. White blood cells - Fighting disease-causing germs  
C. Platelets - Transporting digested food

32. Salting preserves food by

A. creating uncondusive atmosphere for germs  
B. coating the food to prevent the entry of germs  
C. providing very cold conditions for germs  
D. absorbing excess water from the food

33. Which one of the following methods is the most suitable for preventing gulley erosion?

A. Building porous dams  
B. Constructing bench terraces  
C. Applying mulches  
D. Practising contour ploughing

34. A patient was diagnosed with the following signs:

- prolonged coughing  
- loss of weight  
- chest pains

The above disease could be prevented by

A. living in a well ventilated room  
B. clearing all the grass around the homestead  
C. draining stagnant water  
D. proper use of toilets and latrines

35. The following are myths and misconceptions about HIV/AIDS except:

A. its spread through mosquito bites  
B. it has no cure  
C. its caused by witchcraft  
D. it affects immioral people

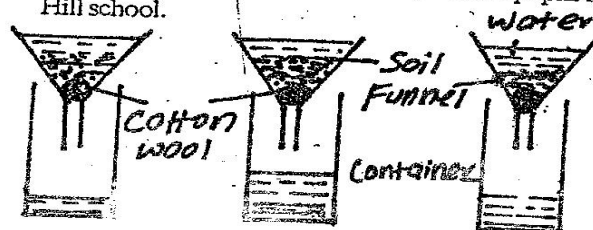
36. Which one of the following vaccines are administered in an infant at the age of nine months after birth?

A. Anti-polio and DPT  
B. Yellow fever and DPT  
C. Anti-measles and yellow fever  
D. Anti-measles and yellow fever

37. The following are advantages of using organic manure except

A. they improve soil structure  
B. they improve soil aeration  
C. they contain specific plants nutrients  
D. they increase the water holding capacity of the soil

38. The experiment below was done by std five pupils from Hill school.



Which one of the following did not have to be the same?

- A. the amount of water
- B. the type of soil
- C. the amount of cotton wool
- D. the size of the funnels

39. Which one of the following groups of foods supply the same nutrients to the body?

- A. Yams, cassava, sweet potatoes
- B. Ground nuts, beans, kales
- C. Cabbage, lemons, bread
- D. Spinach, milk, beef

40. Which one of the following statements is NOT true about the states of matter?

- A. All states of matter have a definite size
- B. Liquids have no definite shape
- C. Solids expands more than gases when heated
- D. gases contracts when cooled

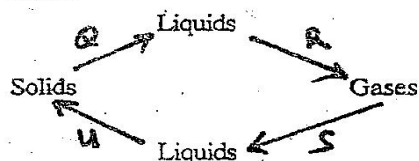
41. Which one of the following are external livestock parasites?

- A. Mites, flies, liverflukes
- B. Tapeworms, lice, fleas
- C. Tsetse flies, ticks, roundworms
- D. Ticks, mites, fleas

42. Chemicals should not be stored in beverage bottles mainly to

- A. prevent contamination
- B. make them last longer
- C. avoid wrong usage
- D. make them effective

43. The following is an illustration of changes of state in matter



The processes that requires absorption of heat from the surrounding are:

- A. Q and R
- B. S and R
- C. U and S
- D. Q and S

44. Which one of the following materials is translucent?

- A. Clear water
- B. Frosted glass
- C. Mirror
- D. Piece of wood

Which one of the following statements correctly defines convection?

- A. The transfer of heat inn liquids only
- B. The transfer of heat in gases only
- C. The transfer of heat in liquids and gases

D. The transfer of heat in solids and liquids

46. the following are ways of maintaining simple tools except:

- A. using the tools for the right work
- B. using them regularly
- C. sharpening cutting tools
- D. greasing the movable parts

47. Standard six pupils dipped a pencil in a glass of water as shown below.



The pencil appeared bend because

- A. light is refracted as it moves from one medium to another
- B. light is reflected when it hits on a shiny surface
- C. light travels on a straight line
- D. light is dispersed into its constituent colours

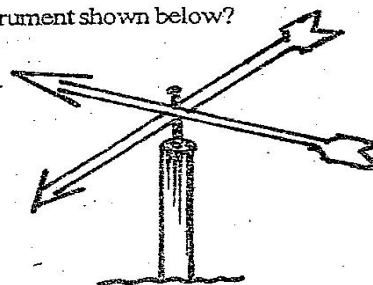
48. Which one of the following is not an effect of parasites on livestock?

- A. Poor health
- B. Irritation
- C. Good quality products
- D. Anaemia

49. Which one of the following are field crop pest?

- A. Cutworms, annyworms, weevils
- B. Rats, aphids, moles
- C. Rodents, weaver birds, termites
- D. Aphids, cutworms, salkborers

50. Which statement is NOT true about weather instrument shown below?



- A. The arrow points towards the direction the wind blows from
- B. The instrument measures two aspects of weather
- C. The tail should be heavier than the arrow
- D. The arrow should be made to rotate freely