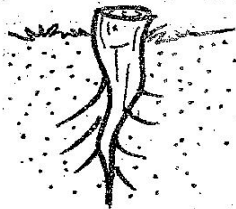


STANDARD FIVE END TERM 2 EXAM, 2017

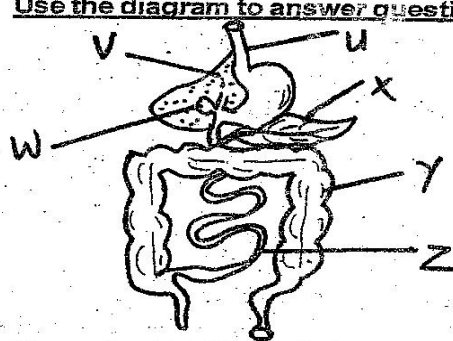
SCIENCE

- The air we breathe is normally cleaned in the
A. Air sac B. Lungs C. Windpipe D. Nose
- The process of breaking down food into small particles that can be absorbed by the body is referred to as
A. nutrition B. transpiration
C. digestion D. respiration
- HIV is spread through the following ways except
A. Sex B. Shaking hands
C. Mother to child D. Sharing piercing tools
- Which of the does not produce its own light? A. Moon B. Torch C. Sun D. Stars
- Which type of plant does not have this type of root?

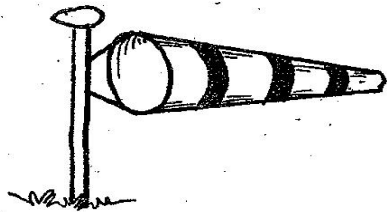


- A. Maize B. Beans C. Peas D. Carrot
- Meat from cattle is called
A. pork B. beef C. mutton D. fish
- The roughness and smoothness of soil is known as
A. drainage B. capillarity
C. texture D. moisture
- Which one of the following is not a tuber crop?
A. Potatoes B. Yams C. Cassava D. Beans
- The soil that contain fine particles is
A. silt B. loam C. sand D. clay
- Chemicals used to kill weeds are called
A. pesticides B. fungicides
C. herbicides D. insecticides
- A metal can be made to float on water by changing its
A. size B. shape C. weight D. length
- Which one of the following is not a use of water in the farm?
A. Boat racing B. Watering crops
C. Animal dip D. Fish pond
- Supplying water to crop is known as
A. pipping B. watering C. farming D. irrigation
- The ability of a type of soil to allow water to pass through is known as
A. capillarity B. soil texture
C. drainage D. retention
- Which one of the following is not a recreational activity of water?
A. Boat racing B. Transportation
C. Swimming D. Surfing

- Several young ones born at the same time to the same mother animal are called
A. litters B. Young ones C. Flock D. Twins
- Which statement true about teeth?
A. Molars have 3 roots while premolars have 2 roots
B. Premolars have 3 roots while molars have two roots
C. Premolars are for tearing while molars are for grinding
D. Premolars are more than molars
- Which one of the following is not a characteristic of animals?
A. They move
B. They make food
C. They reproduce
D. They react to changes in the environment.

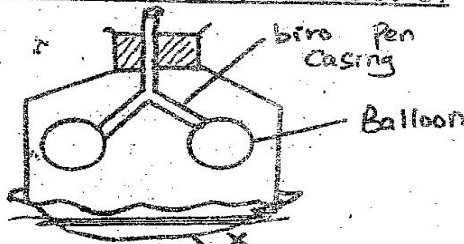


- The part marked Z is called
A. colon B. duodenum
C. ileum D. large intestine
- Where does digestion end?
A. U B. Y C. W D. Z
- Water is absorbed in the part marked
A. V B. X C. W D. Y
- What is the function of the part marked W? To
A. produce saliva B. store saliva
C. produce bile D. store bile
- Animals found in the forest are called
A. domestic animals B. wild animals
C. herbivorous D. carnivorous
- Animals that feed on both flesh and plants are called
A. omnivorous B. herbivorous
C. carnivorous D. flesh eaters
- Barometer measure
A. air pressure B. rainfall
C. speed of wind D. temperature
- The weather instrument below is used to measure _____ and _____ of wind.



- A. strength, direction
- B. rainfall, speed
- C. temperature, rainfall
- D. amount of rainfall, humidity

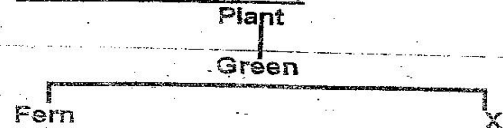
27. The weather instrument in question 26 is likely to be found in
A. bus station B. airstrip C. school D. colleges
28. Which of the following statements is correct?
A. Always expect to be give medicine in hospital
B. Always ask for injection when you are sick
C. Always follow doctor's instructions
D. Always complain when given medicine
29. The following are harmful non-green plants. Which one is not?
A. Head smut B. Ringworm C. Dandruff D. Yeast
- The diagram below represents breathing system. Use it to answer questions 30-31



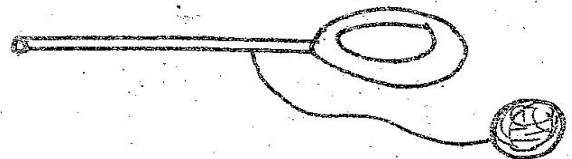
30. The biro-pen casing represents
A. trachea B. gullet C. bronchus D. bronchioles
31. From the diagram below what happens when part X is pulled downwards?
A. The balloons become inflated
B. The balloons become deflated
C. The balloons burst
D. The balloon case closes
32. The dog was carrying its young one using its teeth. Which type of teeth did it use?
A. Molars B. Incisors C. Canines D. Pre-molars
33. Incubation stage is also referred to as
A. full blown AIDS B. asymptomatic
C. window D. symptomatic
34. A person who is infected with HIV is said to be
A. infected B. sick C. positive D. negative
35. The following are functions of roots except A.
A. Support the plant B. store food
C. make food D. absorption of water
36. Centipede move by
A. hopping B. slithering
C. walking D. crawling
37. The following are characteristics of a certain class of animals. Which one is it?

- Cold blooded
 - lay eggs
 - Moist skin without scales
- A. Birds B. Fish C. Reptiles D. Amphibians
38. The process of breathing in is also called
a. inhale B. respiration
C. exhale D. transpiration
39. Which phase of the moon looks like a banana?
A. Gibbous B. Crescent
C. New moon D. Full moon

Study the chart below



40. X represents
A. mushroom B. toadstool C. algae D. penicillium
41. The following are characteristics of clouds
- Round at the top
- Common in fine weather
- Flat base
- Thick white and feathery
The cloud is likely to be
A. stratus B. cirrus C. nimbus D. cumulus
42. Anaemia is caused by lack of
A. enough blood B. enough food
C. enough proteins D. vitamin D
43. The process of providing body with foods necessary for maintenance of good health is called
A. body building B. nutrition
C. feeding D. balanced diet
44. In the diagram below, when the ball was heated it did not pass through the ring. This was because



- A. the metal ball contracted
B. the metal ring contracted
C. the metal ball expanded
D. the metal ring expanded
45. Ships and ferries are heavy. They float on water due to
A. material B. size C. lightness D. shape
46. We cut napier grass using
A. axe B. secateurs C. knife D. panga
47. The best way of removing weeds is by
A. mulching B. using chemical
C. digging them out D. slashing
48. The green colouring matter in plants is referred to as
A. mosses B. chlorophyll C. algae D. bile
49. The round balls of food stuck together by saliva are called
A. boluses B. bits C. balls D. bobs
50. Body building and repair foods are also called
A. vitamins B. fats C. carbohydrates D. proteins