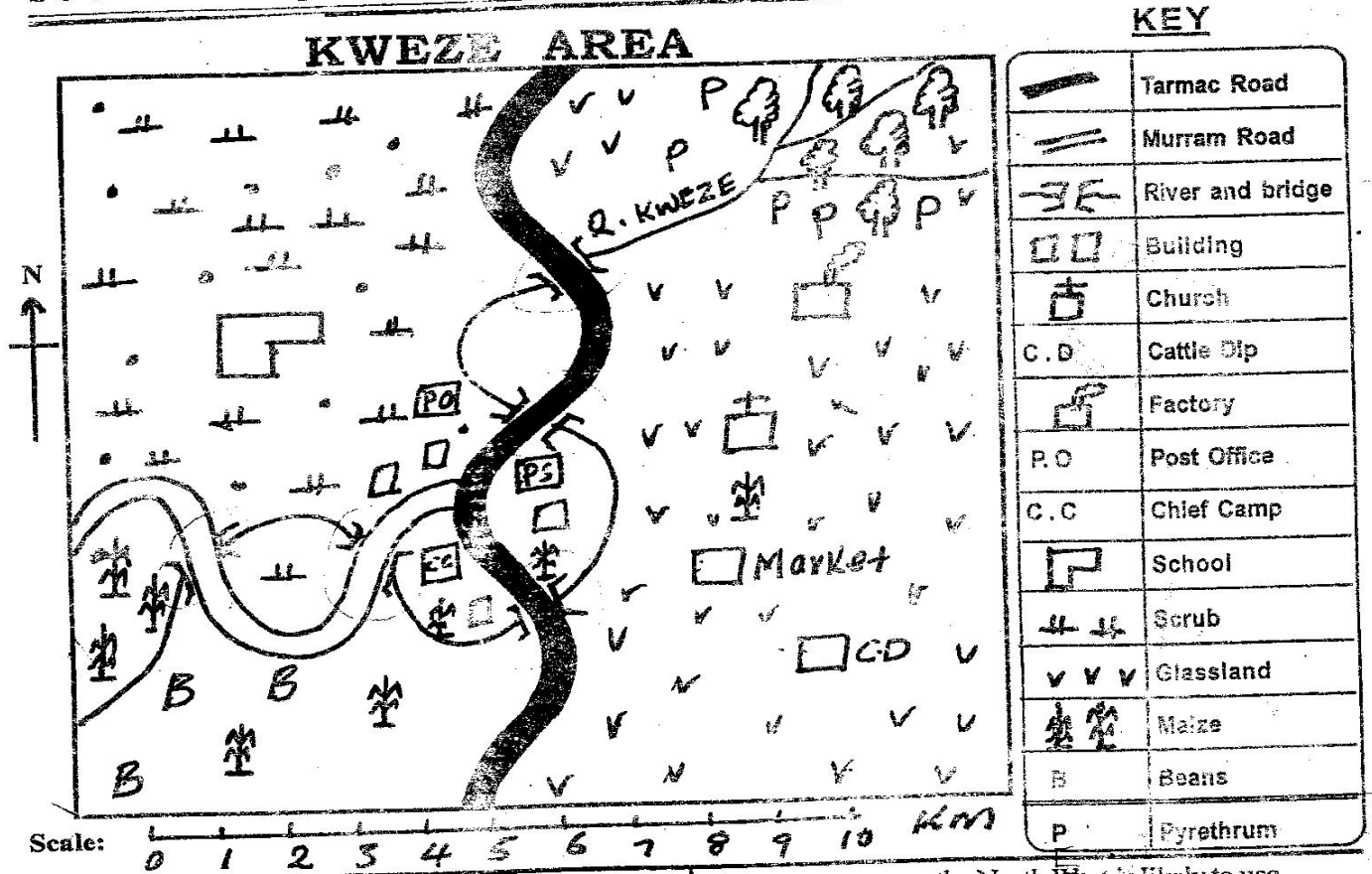


# STANDARD FOUR END TERM 2 EXAM, 2017

## SOCIAL STUDIES & C.R.E

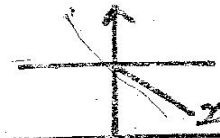
TIME: 2 HOURS



Use the map of Kweze Area above and answer questions 1 - 7.

- Which is the **main** cash crop in Kweze area?  
A. Maize. B. Beans.  
C. Tea. D. Pyrethrum.
- The population distribution on the North West is:-  
A. linear. B. sparse.  
C. dense. D. clustered.
- Security in Kweze area is provided by:-  
A. police. B. chief.  
C. post office. D. market.
- Which is the **main** food crop eaten by many people in Kweze area?  
A. Beans. B. Pyrethrum.  
C. Coffee. D. Maize.
- How many bridges are there in Kweze area?  
A. 4 B. 5 C. 6 D. 3

- The factory on the North West is likely to use \_\_\_\_\_ as its raw materials.  
A. maize. B. meat. C. pyrethrum. D. beans.
- Many people in Kweze sell their products in:-  
A. market. B. factory.  
C. cattle dip. D. post office
- Most people in our county are:-  
A. Semites. B. Cushites.  
C. Nilotes. D. Bantus.
- A county is made up of many:-  
A. Locations. B. Sub-locations.  
C. Sub-counties. D. Divisions.
- The compass direction marked X is:-



Pg. 1

- A. North East.      B. South East  
C. South              D. South West

11. Small rivers which join the main rivers are called:-

- A. tributaries.      B. streams.  
C. confluence.      D. swamps.

12. The keeping of turkeys, chicken and ducks is called:-

- A. birds.              B. dairy  
C. poultry.            D. hens.

13. The people who made spears and axes in the past were called:-

- A. masons.            B. herbalists.  
C. carpenters.        D. blacksmith.

14. Who among the following people live in the house shown below:-



- A. Agikuyu.  
B. Maasai.  
C. Samburu.  
D. Turkana

15. Cattle kept for meat are referred to as:-

- A. dairy cattle.      B. beef cattle.  
C. ranching.          D. pastoralism.

16. The fourth president of Kenya is called:-

- A. Jomo Kenyatta.    B. Daniel Moi.  
C. Mwai Kibaki.      D. Uhuru Kenyatta.

17. Areas with few people are said to be:-

- A. not populated.      B. nucleated.  
C. sparsely populated. D. densely populated.

18. Grass, flowers, trees and bushes that grow in our surrounding are known as:-

- A. forests.            B. decorations.  
C. physical features.   D. vegetation.

19. People who carry goods on their backs or heads are called:-

- A. potters.            B. transporters.  
C. messengers.        D. carriers.

20. The fastest means of transport is by:-

- A. road.                B. air.  
C. water.               D. railway.

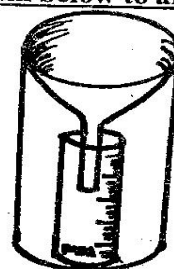
21. A farmer who grows crops and keep some cattle is called:-

- A. animal farmer.  
B. cash crop farmers.  
C mixed farmer.  
D. pastoralist.

22. You have found sh. 500 in the school compound. What can you do?

- A. Buy sweets with the money.  
B. Take to your parents.  
C. Keep it and share with your friends.  
D. Take it to the headteacher.

Use the diagram below to answer questions 23 - 24.



23. Name the weather instrument.

- A. Rain gauge.      B. Thermometer.  
C. Windvane.        D. Anemometer.

24. The units used by the above instrument is:-

- A. centigrade.        B. rainfall.  
C. millicentimetres.   D. millimetre.

25. Which method of communication is not modern?

- A. Horn blowing.      B. Mobile phones.  
C. Newspapers.        D. Television.

26. Which colour in the National flag stands for vegetation?

- A. Red.                B. White.  
C. Green.              D. Black.

27. Who among the following is a member of a nuclear family?

- A. Cousin.            B. Mother.  
C. Aunt.               D. Grandfather.

28. \_\_\_\_\_ refers to the total number of people living in a particular area?

- A. Population distribution.    B. Census.  
C. Population density.        D. Population.

29. To mark the birth of a child in the Traditional Society women:-

- A. ululated.            B. screamed.  
C. shouted.             D. cried.

30. Which one of the following is not a quality of a good citizen?

- A. Loyalty.            B. Patriotism.  
C. Tribalist.            D. Hardworking.

31. The other name for food crop is:-

- A. Cash crop.            B. Subsistence crop.  
C. Export crop.          D. Eating crop.

32. Several hills makes a:-

- A. plain.                B. plateau.  
C. range.               D. valley.

33. People who kill and hunt wild animals are called:-

- A. hunters.            B. Nilotes.  
C. pastoralists.        D. poachers.

34. What is the name given to the river that flows during rainy season only?

- A. Seasonal rivers.      B. Permanent river.  
C. Small rivers.          D. Big rivers.



35. Which one of the following is not a traditional industry?  
A. Raft making. B. Iron working.  
C. Bicycle making. D. Weaving.
36. Special places where sacrifices were offered to God in the Traditional Society were called:-  
A. palaces. B. shrines.  
C. temples. D. churches.
37. Population census in Kenya is carried out after \_\_\_\_\_ years.  
A. 5 B. 7 C. 10 D. 15
38. Mashujaa day in Kenya is celebrated on:-  
A. 1st January. B. 10th October.  
C. 1st June. D. 20th October.
39. The following are major language groups **except**:-  
A. Asians. B. Bantu. C. Cushites. D. Nilotes
40. Baobab and Acacia are type of vegetation found in:-  
A. mountain. B. desert.  
C. savanna D. mangrove
41. People who live in cool and wet areas wear \_\_\_\_\_ clothes.  
A. white B. heavy  
C. light D. jackets
42. Who among the following keeps law and order in our county?  
A. Army. B. Teachers.  
C. Watchmen. D. Police.
43. People who visit our country for leisure are called:-  
A. tourist. B. foreigners  
C. visitors. D. traders.
44. A group of people who trace their origin to one ancestor make up a:-  
A. community. B. society.  
C. clan. D. village.
45. Among the following which one is not a basic need?  
A. Food. B. Shelter.  
C. Clothing. D. Education.
46. All the following methods were used to educate boys and girls in the olden days **except**:-  
A. stories. B. reading.  
C. riddles. D. songs.
47. Throwing waste into a river, lake or land causes:-  
A. pollution. B. drought.  
C. famine. D. flooding.
48. The main sources of rivers is:-  
A. valleys. B. plains  
C. plateau D. forests
49. Papyrus reeds can be used to make:-  
A. guards. B. baskets.  
C. knives. D. pots.
50. A land surrounded by water is called:-  
A. lake. B. ocean.  
C. island. D. highlands.
51. \_\_\_\_\_ are laws that govern a given society.  
A. Moral laws. B. Commandments.  
C. Traditions. D. Taboos.
52. The liquid used in thermometers is called:-  
A. oil. B. water.  
C. ink. D. mercury.
53. Which of the following is not an importance of mountains and hills?  
A. Sources of rivers.  
B. Provide hide out for criminals.  
C. For communication purposes.  
D. Slopes are good for farming.
54. The following are products we get from goats **except**:-  
A. mohair. B. wool.  
C. meat. D. milk.
55. In today life we send messages to far places using:-  
A. letters. B. messengers.  
C. phones. D. cars.
56. The forests found along rivers are known as:-  
A. river forest. B. planted forest.  
C. natural forest. D. riverine forest.
57. Which is the **best** soil for pottery?  
A. Loam soil. B. Clay soil.  
C. Sand soil. D. Volcanic soil.
58. The following are horticulture crops **except**:-  
A. flowers. B. fruits.  
C. tea. D. vegetables.
59. We keep our classroom clean by:-  
A. not collecting papers.  
B. dumping paper at the corner.  
C. washing the classroom.  
D. sharpening on the floor.
60. A place where the river end is called:-  
A. source. B. lake.  
C. forest. D. mouth  
C.R.E
61. All the plants were created on the:-  
A. second. B. third.  
C. fourth. D. fifth.
62. Which one of the following is not a use of plants?  
A. Building. B. Shade.  
C. Shadow. D. Fuel.
63. God cares for all his creation by providing \_\_\_\_\_ and \_\_\_\_\_  
A. clothes and water. B. food and cars.  
C. rain and sunshine. D. manure and water.

64. Lydia was a \_\_\_\_\_ lady.  
A. honest. B. kind  
C. courageous D. proud
65. Who among the following is not a patriarch?  
A. Isaac. B. Esau.  
C. Moses. D. Jacob.
66. Jesus was taken to worship in the temple when He was \_\_\_\_\_ years old.  
A. twelve B. thirteen  
C. ten D. nine
67. Elikanah's family used to worship God in the temple at:-  
A. Nazareth. B. Jerusalem.  
C. Bethlehem. D. Shiloh.
68. Joseph became a governor in the land of:-  
A. Egypt. B. Israel.  
C. Caanan. D. Haran.
69. The youngest son of \_\_\_\_\_ was David.  
A. Solomon B. Jesse  
C. Goliath D. Paul
70. Prophets \_\_\_\_\_ and \_\_\_\_\_ are the prophets who foretold the birth of Jesus.  
A. Jeremiah and Isaiah B. Isaiah and Micah  
C. Micah and Moses D. Ezekiel and Joel
71. (i) Preaching in the desert.  
(ii) He ate locusts and honey.  
(iii) He prepared the coming of Emmanuel.  
The above information refers to:-  
A. Jesus. B. Zachariah.  
C. Abraham. D. John the Baptist.
72. For one to be healed by Jesus \_\_\_\_\_ was required.  
A. faith B. courage  
C. honesty D. pride
73. Israelites celebrate the \_\_\_\_\_ to remember the day they left Egypt.  
A. Pentecost B. Passover  
C. Christ D. Easter
74. Who among the following was not a disciple of Jesus?  
A. John the Baptist. B. Mathew.  
C. Thomas. D. Philip.
75. After the resurrection, Jesus stayed with His disciples for:-  
A. 40 years. B. 40 hours.  
C. 40 months. D. 40 days
76. The disciples of Jesus received the Holy Spirit in:-  
A. Jerusalem. B. Bethiehem.  
C. Nazareth. D. Israel
77. \_\_\_\_\_ planned to have Naboth stoned to death so that the husband could possess the vineyard.  
A. Naboth B. Jezebel  
C. king Ahab D. Elizabeth
78. Prophet \_\_\_\_\_ was sent by God to king Ahab after they killed Naboth.  
A. Elisha B. Isaiah  
C. Elijah D. Jeremiah
79. When we show constant love to our neighbours we are being:-  
A. courageous. B. tough.  
C. unfair. D. fair.
80. \_\_\_\_\_ helped Jesus to carry the cross.  
A. Joseph of Arimathea B. Judas  
C. Simon of Cyrene D. Simon Peter
81. Noah was \_\_\_\_\_ years old when he was told to build the ark.  
A. 600 B. 150 C. 40 D. 400
82. Which of the following miracles of Jesus shows that Jesus has power over death?  
A. Feeding the five thousand people.  
B. Raising Lazarus from the dead.  
C. Calming the storm.  
D. Miraculous catch of fish.
83. Which one of the following is not a use of water?  
A. Cooking. B. Washing.  
C. Walking on the water. D. Bathing.
84. \_\_\_\_\_ was not created by God.  
A. Hills B. Rivers  
C. Trees D. Road
85. The paralysed man who was brought through the roof was \_\_\_\_\_ his sins.  
A. forgiven B. forgotten  
C. told to repent D. beaten
86. The first four disciples were:-  
A. teachers. B. fishermen.  
C. tax collectors. D. carpenters.
87. Njogu's brother was caught stealing githo from Mugo's home. As a Christian what was the best thing for Mugo to do?  
A. Beat him up.  
B. Report him to the nearest police station.  
C. Tell his mother to talk to Njogu's parent and see how they can get help.  
D. Tell everybody in school that Njogu is a thief.
88. When Jesus fed the 5,000 people how many baskets of left over were collected?  
A. Seven. B. Twelve.  
C. Five. D. Two
89. God gave Moses the Ten Commandments at Mt.:-  
A. Sinai. B. Horeb.  
C. Kenya. D. Ararat.
90. The last meal Jesus shared with His disciples was called:-  
A. Dinner B. Holy Communion.  
C. Food. D. Jesus' meal.