
STANDARD SEVEN MID-TERM 3 EXAMS

2016 SCIENCE

Coordinated by KENPRO,
Macjo Arcade, 4th Floor, Suite 15E,
Off Magadi Road, Ongata Rongai |Tel: +254202319748 |
E-mail:infosnkenya@gmail.com | Website:www.schoolsnetkenya.com

READ THESE INSTRUCTIONS CAREFULLY

1. You have been given this question booklet and a separate answer sheet. The question booklet contains 90 questions
2. Do any necessary rough work in this booklet.
3. When you have chosen your answer mark it on the **ANSWER SHEET**, not in the question paper.

HOW TO USE THE ANSWER SHEET

4. Use an ordinary pencil only.
5. Make sure that you have written on the answer sheet:-
YOUR INDEX NUMBER
YOUR NAME
NAME OF YOUR SCHOOL
6. By drawing a **dark line inside the correct numbered boxes** mark your full Index Number (i.e.) School Code Number and the three - figure Candidates Number) in the grid near the top of (the answer sheet.
7. Do not make any marks outside the boxes.
8. Keep your answer sheet as clean as possible and **DO NOT FOLD IT.**
9. For each of the questions 1- 90 four answers are given. The answers are lettered A,B,C, D. In each case only **ONE** of the four answers is correct. Choose the correct answer.
10. On the answer sheet show the correct answer by drawing a **dark line inside the box** in which the letter you have chosen is written.

Example

In the Question Booklet:

33. Which one of these crop pests is **NOT** a field pest?

- A. Weaver bird
- B. Aphid
- C. Cutworm
- D. Weevil

The correct answer is **D.**

On the Answer Sheet:

30. [A] [B] [C] [D] **31.** [A] [B] [C] [D] **32.** [A] [B] [C] [D] **33.** [A] [B] [C] [D]

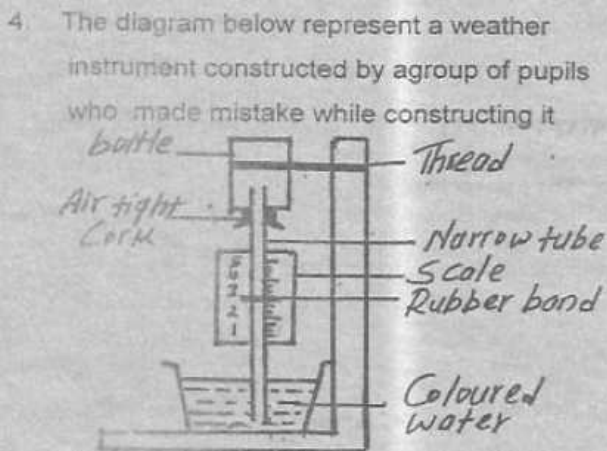
In the set of boxes number 38, the box with letter **B** printed in it is marked.

11. Your dark line **MUST BE** within the box.
12. For each question **ONLY ONE** box is to be marked in each set of four boxes.

Candidates should check the question paper to ensure that all the pages are printed

TURN OVER

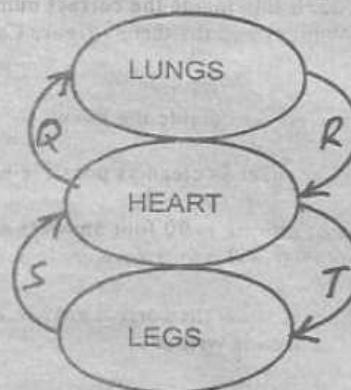
- Which one of the following sources of energy is renewable?
 - Kerosene
 - Biogas from cowdung
 - Coal
 - Cooking gas from crude oil
- Exchange of gases in the air sacs is by a process called _____.
 - osmosis
 - diffusion
 - convection
 - capillarity
- The main reason why insectivorous plant feed on insects is because the plant
 - do not manufacture its enough food
 - are found in poorly drained soils
 - are found in nitrogen deficient soil
 - secret sticky fluid on leaves to trap insect



The mistake made during construction was

- closing the mouth of the bottle
 - using little amount of coloured water
 - having the container with water open
 - having the scale reading from the bottom
5. Which of the following does not effect floating and sinking of an object?
- Size
 - Shape

- Density
 - Weight
- Which one of the following ways of reducing friction wholly depend on the object or body in motion?
 - Fitting ball bearing
 - Streamling shape
 - Lubricating moving parts
 - Placing rollers underneath
 - The following are possible ways of contracting HIV/AIDS **except**
 - sexual intercourse
 - blood transfusion
 - sharing of piercing needle
 - sharing food with infected people
 - In the diagram below which pair of blood vessel carry deoxygenated blood?



- Q and S
 - R and S
 - R and T
 - Q and T
- Which one of the following is **not** air pollutants?
 - Burning of tyre plastic and papers
 - Gases from vehicles exhaust, aerosal spray
 - Oil, grease, tar
 - Spraying farms chemical, cigarette smoking

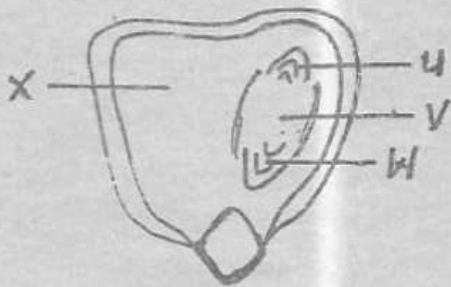
10. Which of the following is non - conductor of electricity?

- A. Graphite
- B. Carbon rod
- C. Copper
- D. Plasticine

11. Given below are examples of an inclined plane except

- A. Screw
- B. Ladder
- C. Pulley
- D. Staircase

12. The diagram below show internal part of the monocot seed. The part that comes out first during germination is



- A. U
- B. X
- C. V
- D. W

13. The beaks of filter feeders have serrated edges with cross plates on their margins purposely to

- A. allow them catch fish in water
- B. allow them feed on exact food size
- C. allow them take water easily
- D. allow them filter small food particles from water

14. Kibet wanted to make green manure in his shamba. He used plant with the following properties except

- A. are leafy
- B. grow fast

C. decompose slowly

D. contain high nitrogen content

15. Ozone layer is very important to human, animals and plants because it

- A. protect the earth from harmful
- B. protect the earth from useful rays
- C. protect the earth from the harmful rays
- D. protect the earth from acid rain

16. Which vitamin is responsible for blood clotting?

- A. Vitamin A
- B. Vitamin K
- C. Vitamin E
- D. Vitamin C

17. Which one of the following is **not** the function of placenta?

- A. Provide nourishment to the foetus
- B. Protect the baby from shock
- C. Transport waste product from the embryo
- D. Transport oxygenated blood to the embryo

18. The functions of coloured petals in a flowering plants is

- A. trap insects
- B. make food for plants
- C. protect the stigma and the anther
- D. attract insects

19. The factor that determines which liquid can float on another is

- A. volume
- B. weight
- C. mass
- D. density

20. The method of feeding where livestock are tied to the pole or a peg is called _____

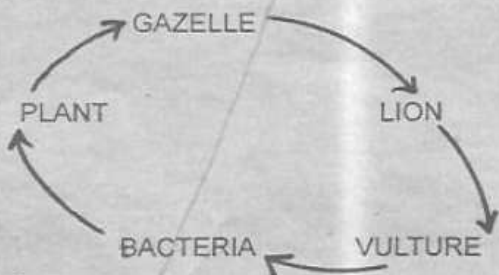
- A. stall feeding
- B. tethering
- C. strip grazing
- D. herding

21. Which one of the following is **not** the function of the skin?
- A. Removal of the sweat
 - B. Feeling things
 - C. Controlling body temperature
 - D. Removal of urine

22. The nutrients which should be present in pregnant mother's diet is
- A. lots of carbohydrates, mineral salt and vitamin
 - B. lots of fat, mineral salts and vitamins
 - C. lots of proteins, mineral salts and vitamins
 - D. equal amount of protein, carbohydrates and fats

23. The type of clouds that appears as feathers like patches in the sky is
- A. nimbus
 - B. cirrus
 - C. stratus
 - D. cumulus

24. The following is a food chain



Which of the following animal in the food chain is a tertiary consumer?

- A. Lion
 - B. Gazelle
 - C. Vulture
 - D. Bacteria
25. Which of the following parasites transmits trypanomiasis in cattle?
- A. Ticks
 - B. Fleas
 - C. Mites
 - D. Tsetse flies

26. The quality which make mercury to be better used in thermometer is _____

- A. shines
- B. it cannot contract
- C. it expand easily
- D. it cannot evaporate

27. Which of the following is a method of softening hard water?

- A. Decanting
- B. Filtration
- C. Boiling
- D. Seiving

28. Which component of the environment when polluted directly affect marine life?

- A. Air
- B. Soil
- C. Light
- D. Water

29. Pupils saw the beak of the bird shown below in which of the place were they likely to see the bird?



- A. Near the lake
- B. In a wheat farm
- C. Near slaughter house
- D. In an orchard

30. Which of the following plants stores food in stem?

- A. Carrot
- B. Irish potato
- C. Sweet potato
- D. Onion

31. Which food material play significant role in digestion but have no nutritional value?

- A. Maize grains B. Vegetables
C. Food fibre D. Fruits

32. Refraction of light is defined as

- A. bouncing back of light
B. reflection of light
C. dispersion of light
D. bending of light

33. The diagram below represents a simple machine in use. The machine is an example of:



- A. an incline plane B. a wheel and axle
C. a lever D. a pulley

34. Which one of the following is the main reason for adding lime to soil?

- A. Lower the alkalinity
B. Lower the acidity
C. Increase soil minerals
D. Improve drainage

35. Which property of soil **does not** depend on the size of its particles?

- A. Colour B. Drainage
C. Texture D. Water retention

36. Which one of the following is **not** a method of preventing soil erosion?

- A. Terracing
B. Crop rotation
C. Fallowing the land
D. Building porous dams

37. Which of the following devices convert light energy into usable electric energy?

- A. Geothermal generators
B. Thermal cookers
C. Solar panels
D. Wind - driven generation

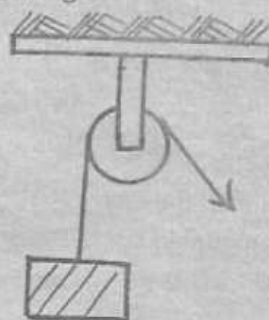
38. What is the main reason why solar drier is painted black inside?

- A. To prevent from rusting
B. To absorb more energy
C. To decorate it
D. To reflect more heat

39. If the word EXAM is written on a piece of paper and place in front of a mirror the word will appear as

- A. EXAM
B. EXAW
C. MAXE
D. EXAW

40. The diagram below show a single fixed pulley which one of the following is **not true** about its working?



- A. Load is equal to the effort
B. The load distance is equal to the effort distance
C. The effort used is half the load
D. The pulley system has no mechanical advantage

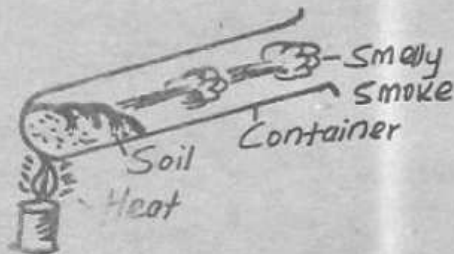
41. In which group we can place spiny - ant - eater and Duck -billed platypus?
- Insectivorous
 - Poached animals
 - Egg - laying mammals
 - Flying mammals

42. The arrow of a windvane was pointing South. The wind was blowing to:
- North
 - East
 - West
 - South

43. Taking excess medicine than the required amount is known as
- overdose
 - underdose
 - doctor's advice
 - prescription

44. The specific study of weather is called _____ and it is done by _____
- meteorologists , meteorology
 - meteorology, meteorologist
 - astrology, astrologist
 - weather patterns, meterorogist

45. Std 4 pupils heated a some fresh garden soil as shown below. The experiment shows that:



- soil has air
 - there is water in the soil
 - humus is present in soil
 - soil can produce smoke when heated for long
46. A child was found with the following symptoms
- brown hair*
 - cries alot and looks unhappy*
 - had a pot belly*
 - look very weak*

Which deficiency disease was the child likely to be suffering from?

- Marasmus
- Anaemia
- Kwashiorkor
- Ricket

47. Which one of the following shows the correct composition of soil?

- Livingthings, organic matter, air, stone
- Minerals, livingthings, organic matter, air, water, inorganic matter
- Organic matter, oil, mineral, water, ash
- Living things, water, air, worms, rock, oil

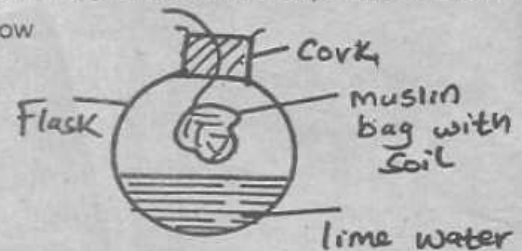
48. Which of the following methods of purifying water will get rid of harmful micro - organism?

- Condensation
- Filtration
- Chlorination
- Sedimentation

49. The following are factors affecting the rate of soil erosion except

- intensity of rainfall in an area
- vegetation cover in an area
- the gradient of the soil
- the name of the place

50. Std 5 pupils collected garden soil and put in a muslin bag and set the experiment shown below



After sometimes lime water turns milky. Which of the following was their conclusion?

- Soil has carbondioxide
- There are livingthing in the soil
- Soil has water
- There are inorganic matter in the soil